

IOWA

Civil and Environmental
Engineering

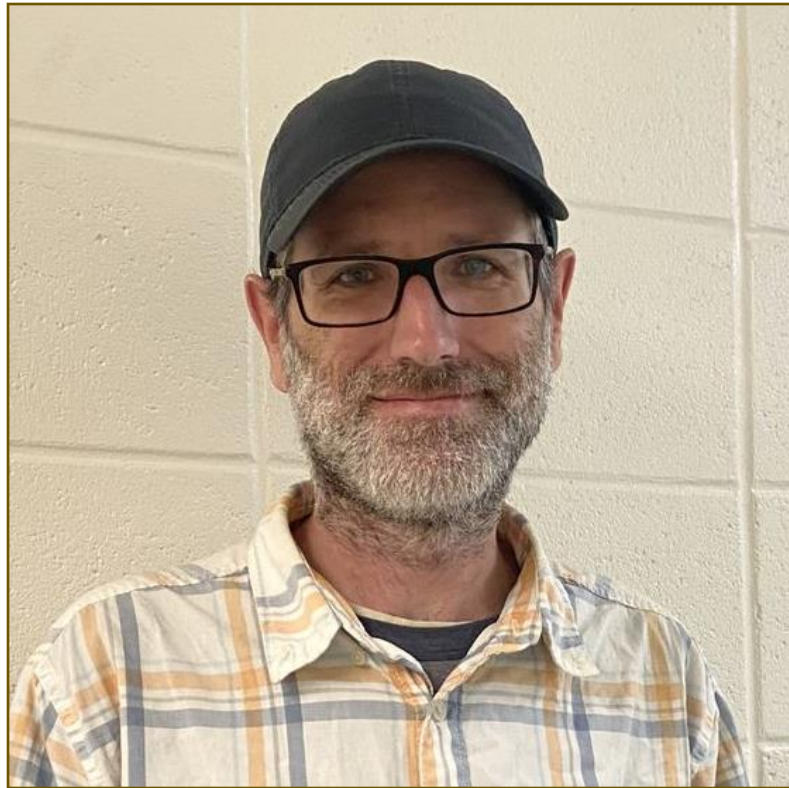
Luers Park Stormwater Management Project

December 2024





Thomas Riggio – Environmental
Focus Area: Sustainability



Daniel Boyle - Civil
Focus Area: Civil Practice



Abby Huls - Civil
Focus Area: Environmental

Client

Gregg Mandsager

City Administrator

Chase Williams

Public Works Director

Mike Brissey

Retired Public Works
Director

Ringo Covert

City Council Member



Agenda



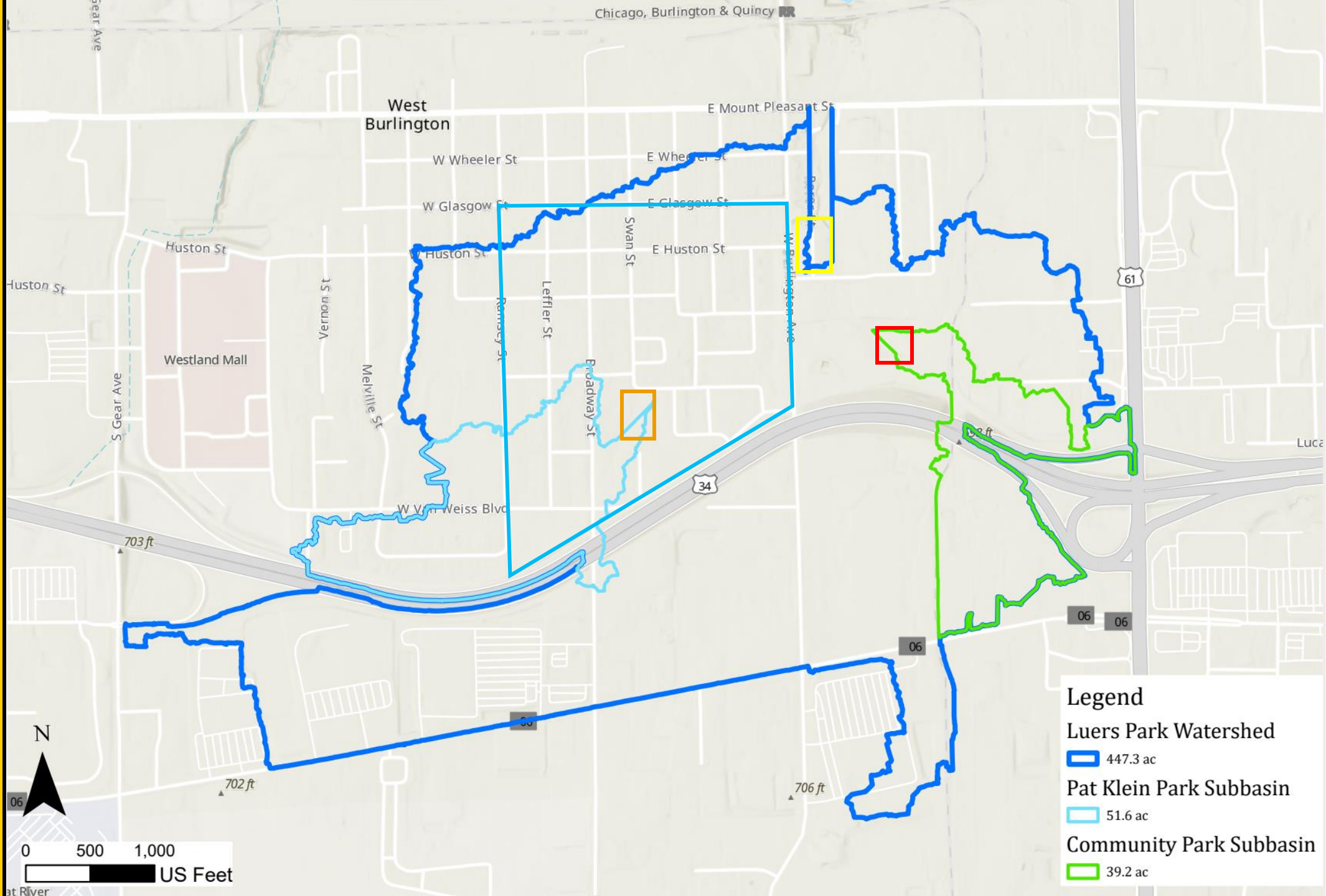
Project Location



Legend

- ▭ Detention Basin at Community Park
- ▭ Bioretention Network at Luers Neighborhood
- ▭ Swale Extension in Luers Park
- ▭ Underground Storage at Pat Klein Park

Site Watershed



Legend

- Luers Park Watershed
447.3 ac
- Pat Klein Park Subbasin
51.6 ac
- Community Park Subbasin
39.2 ac

Watershed Runoff

	2-year Storm	10-year Storm	50-year Storm
24-hr Precipitation (in)	3.1	4.5	6.4
TR-55 Flow Estimate (cfs)	36.1	61.5	94.5
Runoff Volume	71.6 acre-ft 23 m-gal	122.0 acre-ft 40 m-gal	187.3 acre-ft 61 m-gal

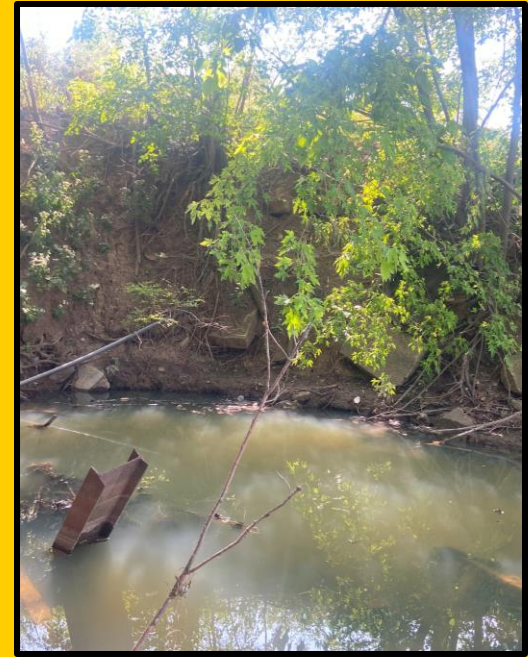
Watershed Runoff

	2-year Storm	10-year Storm	50-year Storm
24-hr Precipitation (in)	3.1	4.5	6.4
TR-55 Flow Estimate (cfs)	36.1	61.5	94.5
Runoff Volume	71.6 acre-ft 23 m-gal	122.0 acre-ft 40 m-gal	187.3 acre-ft 61 m-gal

Scope Summary

Goal: Slow, reduce, and treat stormwater runoff before it reaches Luers Park.

A detention basin, bioretention network, bioswale, and underground storage were designed.



Erosion and submerged outlet at Izaak Walton lake.







Community Park Flooding

Project Location



Legend

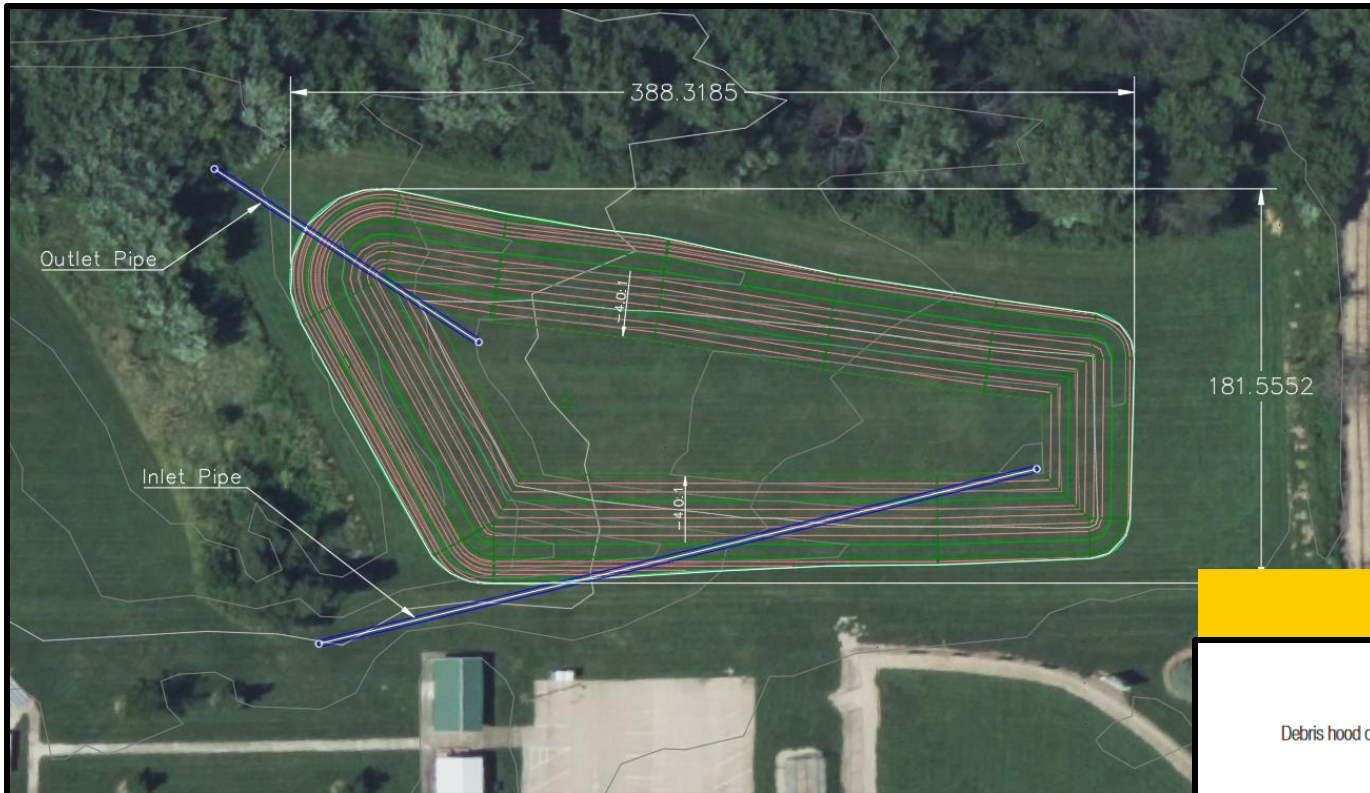
-  Detention Basin at Community Park
-  Bioretention Network at Luers Neighborhood
-  Swale Extension in Luers Park
-  Underground Storage at Pat Klein Park

Community Park Detention Basin

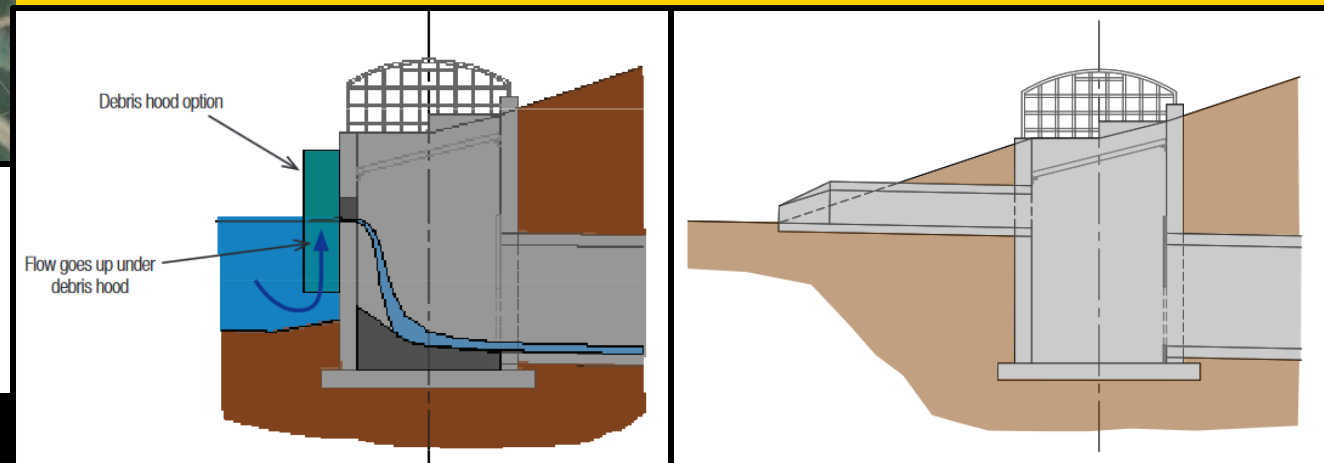
Current Landowner: Heartland
Corrugated, Inc.

Provides 4.3 acre-ft (1.2 mgal)

During flood events, this will
provide storage for runoff from
the south-east part of
watershed.



Inlet and Outlet Structures

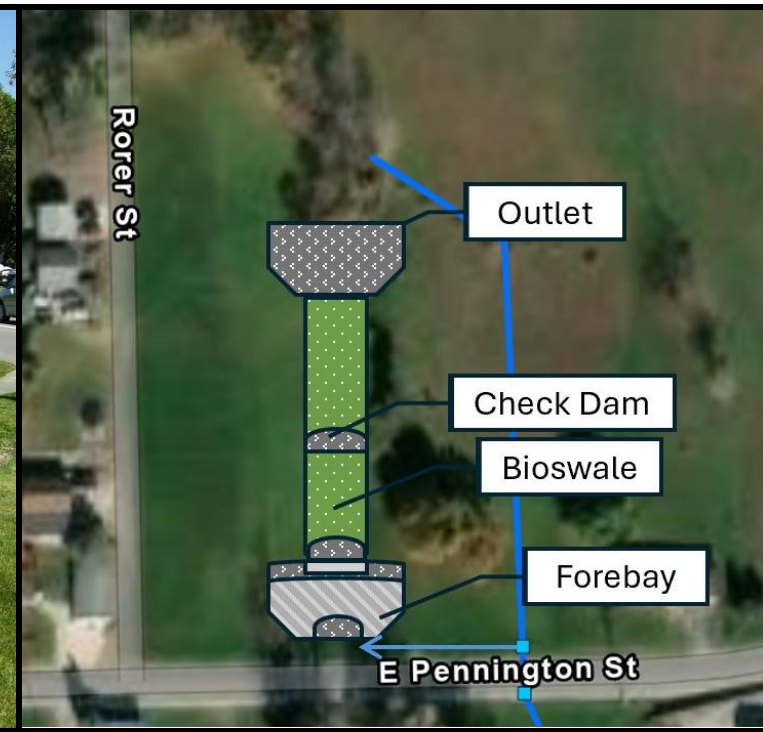


Luers Park Bioswale

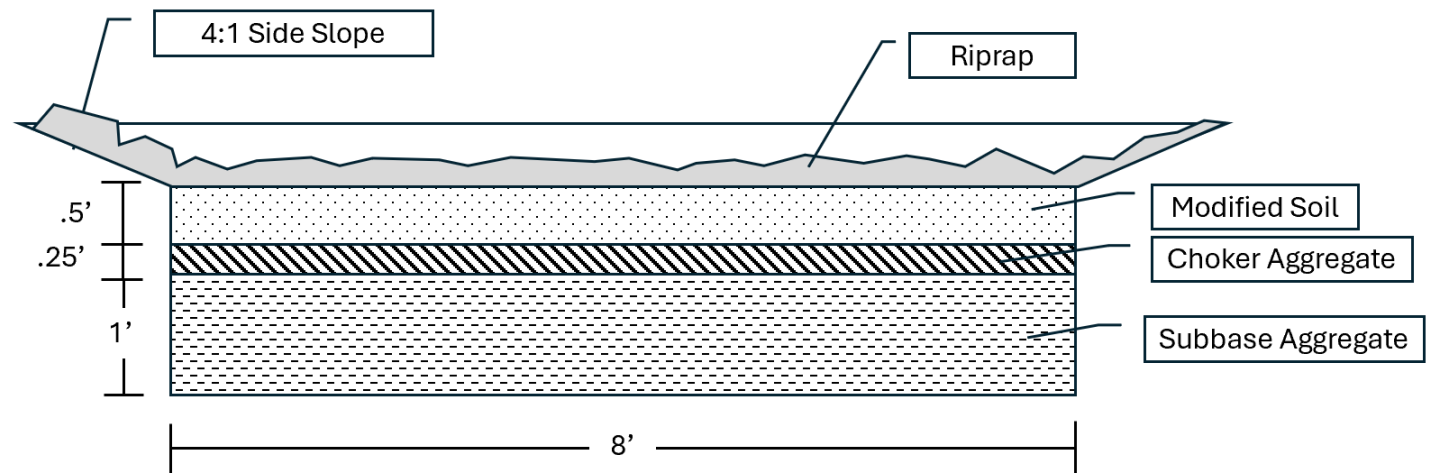
Current Landowner: BK Land, LLC

Provides 0.16 acre-ft (0.05 mgal)

The bioswale will slow stormwater, encourage infiltration, and reduce some sediment load.



Example Bioswale showcasing native vegetation.



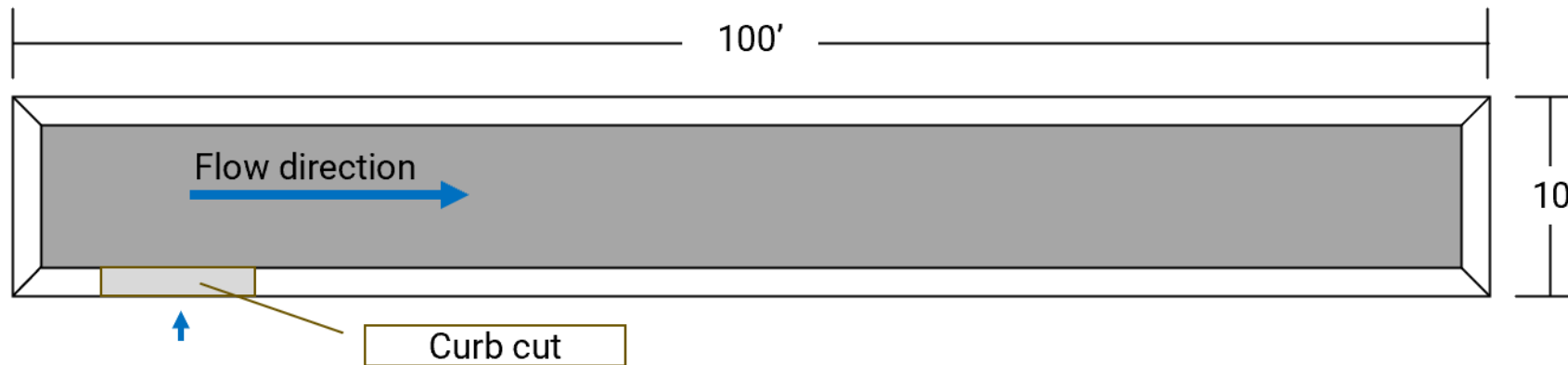
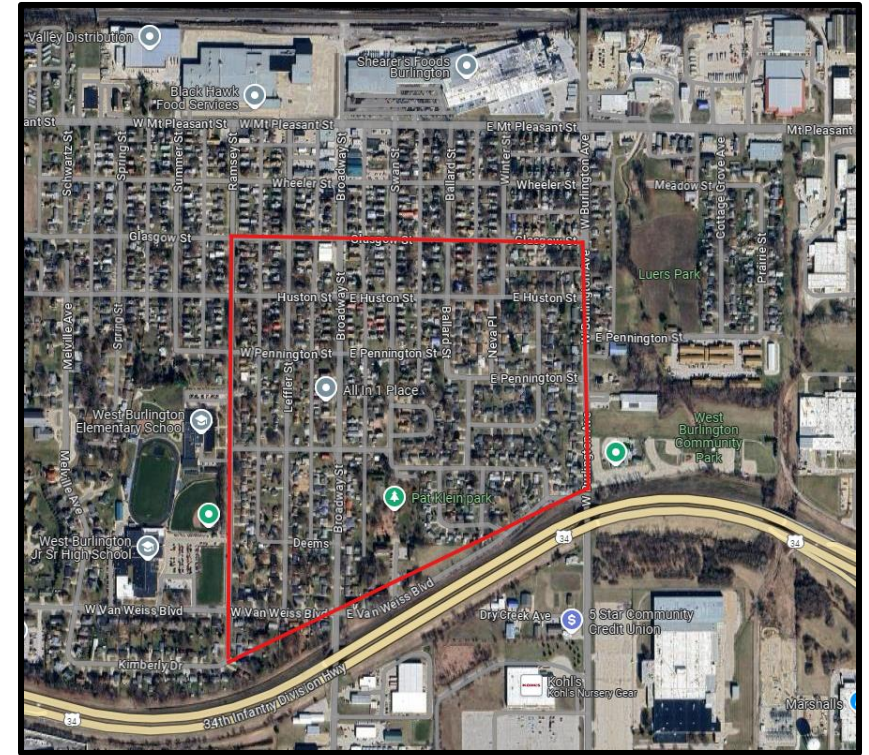
Neighborhood Bioretention Network

Current Landowner: City of West Burlington

115 cells add 3.4 acre-ft (0.95 mgal)

130 cells add 3.9 acre-ft (1.09 mgal)

The bioretention cells will provide runoff storage, reduce peak flow, and treat the stormwater.



Top view of standard bioretention cell.

Underground Storage

Ferguson Waterworks

R-Tank is modular underground storage system with 95% void space.

A 6' depth was selected for maximizing storage.



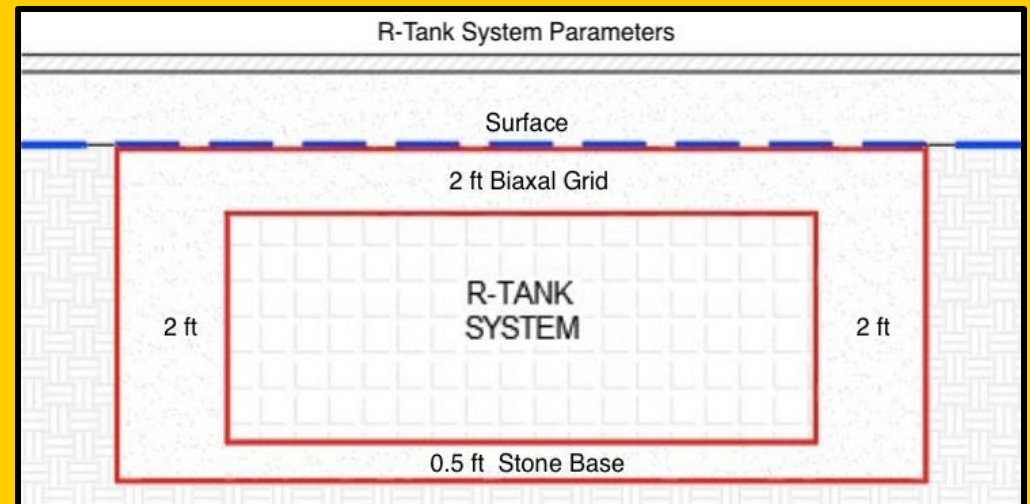
Pat Klein Underground Storage

Current landowner: City of West Burlington

Net Acres: 0.46

Storage capacity: **2.6 acre-ft (0.73 mgal)**

The Pat Klein storage tanks will reduce peak flow at Luers Park. Will connect to existing storm sewer.



10% Runoff Reduction Plan for a 2-Year Storm

	115 Bioretention Cells	Community Park Detention Basin	Total
Storage Capacity	3.4 acre-ft 1.1 m-gal	4.3 acre-ft 1.4 m-gal	7.7 acre-ft 2.5 m-gal
Cost	\$1,792,000	\$251,500	\$2,043,500

Alternative Designs

% Reduction of 2-Year Storm	5%	15%	25%
Methods	<ul style="list-style-type: none"> <input type="checkbox"/> 115 Bioretention Cells 	<ul style="list-style-type: none"> <input type="checkbox"/> Detention Basin <input type="checkbox"/> R-Tank 6ft (0.46 acre) <input type="checkbox"/> 130 Bioretention cells 	<ul style="list-style-type: none"> <input type="checkbox"/> Detention Basin <input type="checkbox"/> R-Tank 6 ft (1.69 acre) <input type="checkbox"/> 130 Bioretention Cells <input type="checkbox"/> Bioswale
Storage Capacity	<p>3.4 acre-ft</p> <p>1.1 m-gal</p>	<p>10.8 acre-ft</p> <p>3.5 m-gal</p>	<p>17.9 acre-ft</p> <p>5.8 m-gal</p>
Cost	\$1,785,500	\$4,467,500	\$10,394,300

Recommendations

- The cost to handle the volume of stormwater is considerable and very little space is available.
- Work to address discharge at Izaak Walton Lake is essential to resolve West Burlington's larger stormwater issues.



Stormwater outlet just upstream of Izaak Walton Lake.

IOWA

Civil and Environmental Engineering

Thank you!

Thomas Riggio
Daniel Boyle
Abby Huls

→ **Questions?**