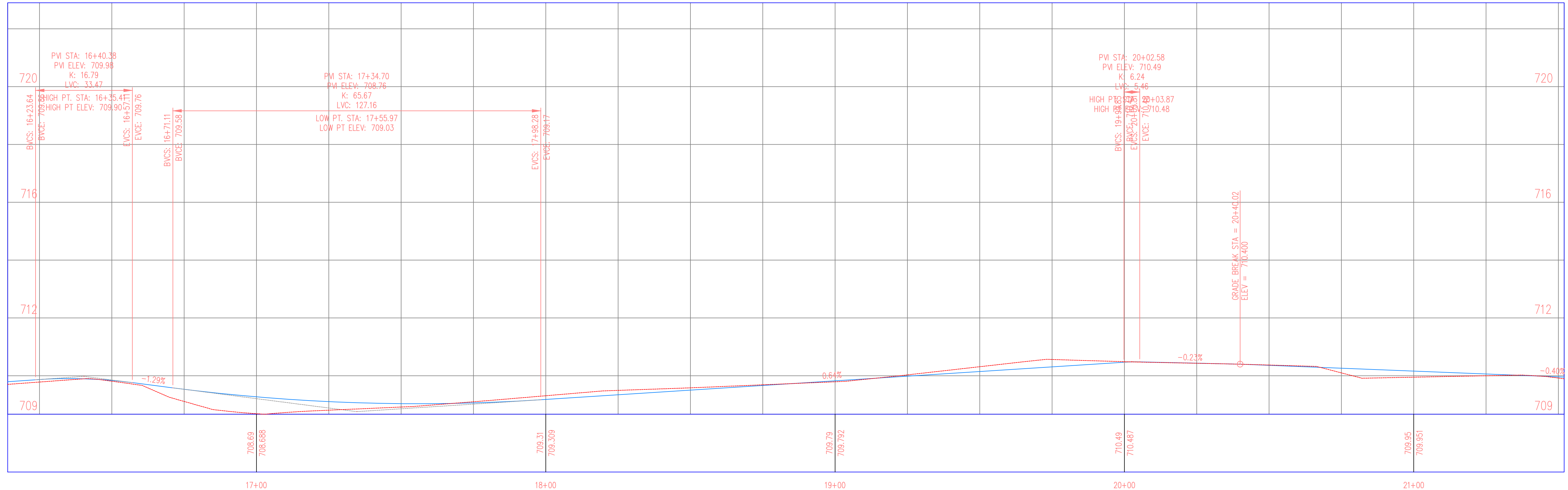
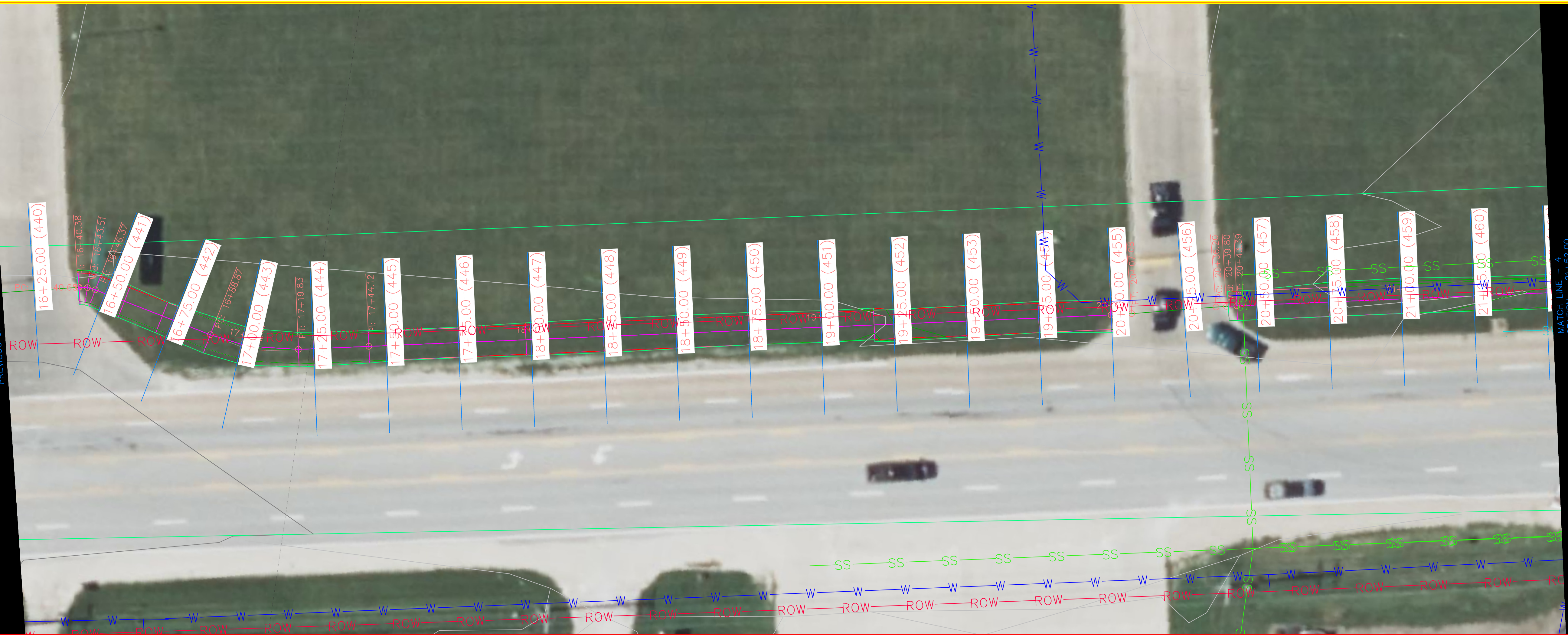


MATCH LINE - 3
 AT STATION - 16+14.00
 PREVIOUS SHEET NUMBER: 3

MATCH LINE - 4
 AT STATION - 21+52.00
 NEXT SHEET NUMBER: 5



THE UNIVERSITY OF IOWA
CIVIL AND ENVIRONMENTAL ENGINEERING
 4105 SEAMANS CENTER FOR THE
 ENGINEERING ARTS AND SCIENCES
 103 S CAPITOL ST
 IOWA CITY, IOWA 52242
 PHONE: 319.335.5647
 FAX: 319.335.5660
 EMAIL: civil-hawks@iowa.edu



EDUCATIONAL - NOT FOR CONSTRUCTION

Agency St. Trail Project

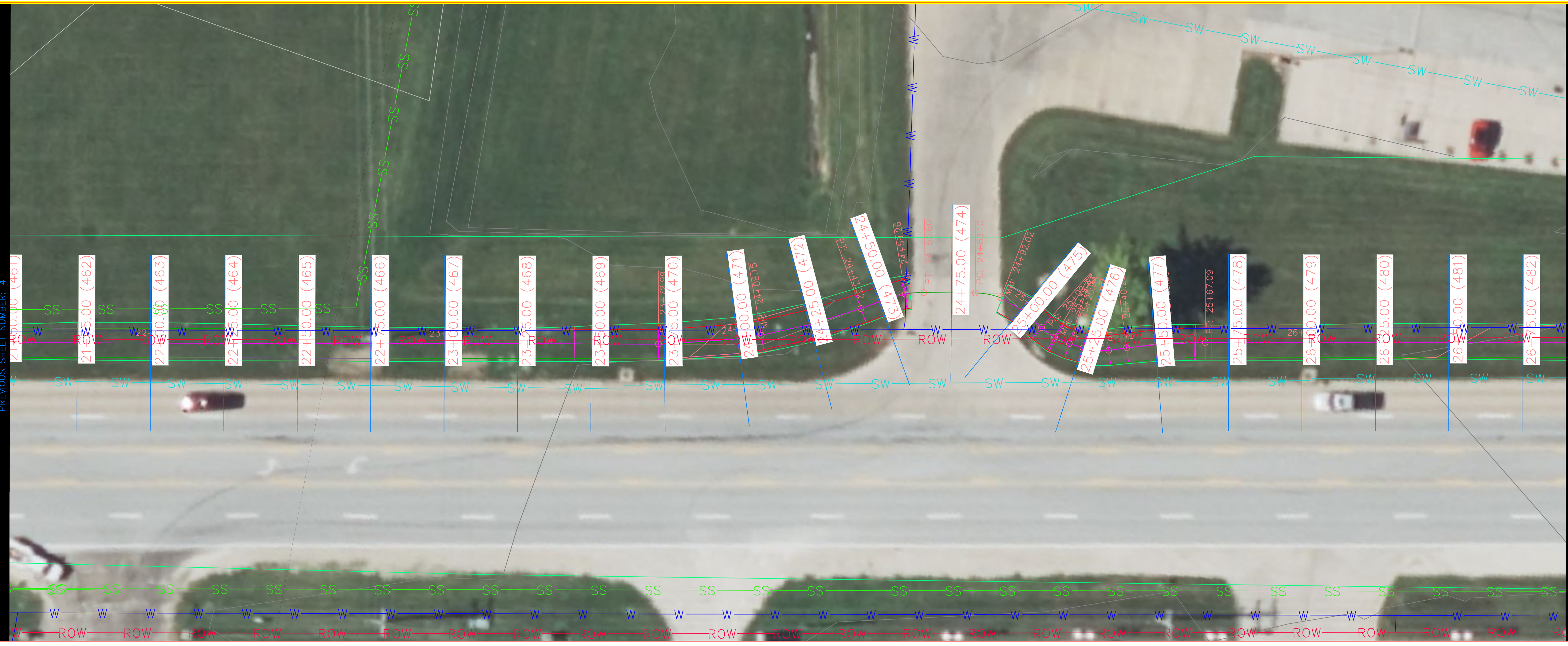
122 Broadway St.
 West Burlington, IA 52655

SHEET NAME
 Gear Ave. to W
 Walmart Driveway

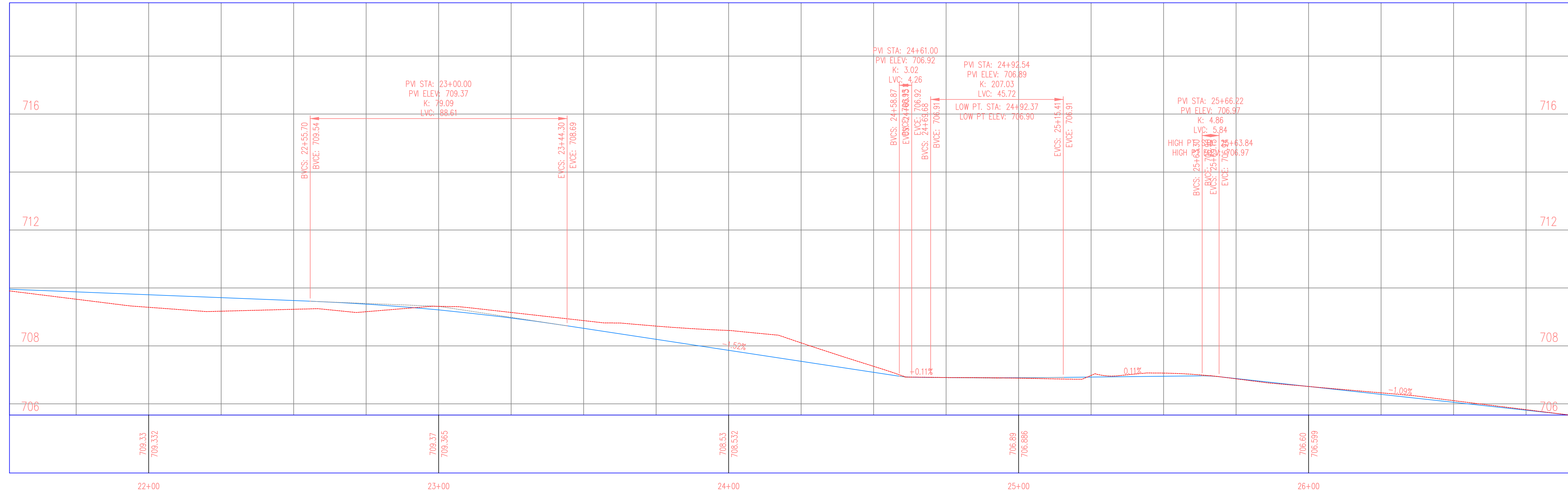
SHEET NO.
D-05

MATCH LINE - 4
 AT STATION - 21+52.00
 PREVIOUS SHEET NUMBER: 4

MATCH LINE - 5
 AT STATION - 26+90.00
 NEXT SHEET NUMBER: 6



Gear Ave. to W Walmart Driveway Profile



PROJECT:	CEE: 4850
DATE :	11/18/2024
DRAWN BY:	Bieke Misfeldt
REVISION:	

THE UNIVERSITY OF IOWA
CIVIL AND ENVIRONMENTAL ENGINEERING
 4105 SEAMANS CENTER FOR THE
 ENGINEERING ARTS AND SCIENCES
 103 S CAPITOL ST
 IOWA CITY, IOWA 52242
 PHONE: 319.335.5647
 FAX: 319.335.5660
 EMAIL: civil-hawks@iowad.edu



EDUCATIONAL - NOT FOR CONSTRUCTION

Agency St. Trail Project
 122 Broadway St.
 West Burlington, IA 52655

SHEET NAME
 Gear Ave. to W
 Walmart Driveway

SHEET NO.
D-06

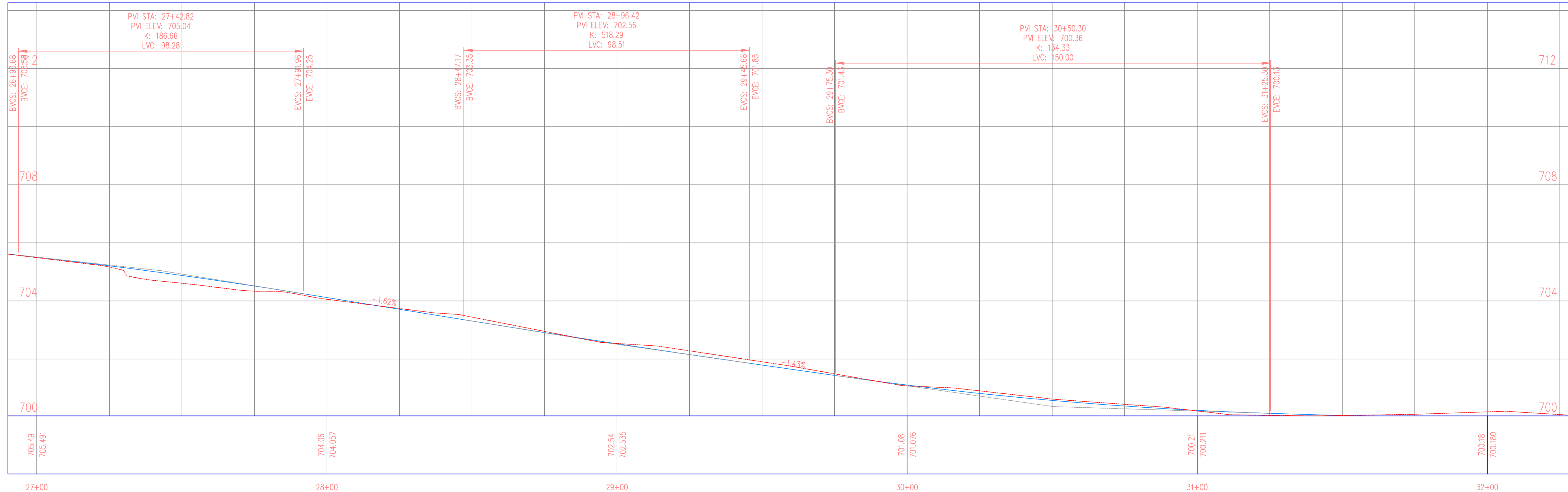
MATCH LINE - 5
 AT STATION - 26+90.00
 PREVIOUS SHEET NUMBER: 5

MATCH LINE - 6
 AT STATION - 32+28.00
 NEXT SHEET NUMBER: 7



Intersection - Agency St. and Walmart Sidewalk
 Alignment = Gear to W Walmart Driveway, Station 29+9.51
 Alignment = Walmart Sidewalk, Station 0+00.00

Gear Ave. to W Walmart Driveway Profile



PROJECT: CEE: 4850
 DATE: 11/18/2024
 DRAWN BY: Blake Misfeldt
 REVISION:

THE UNIVERSITY OF IOWA
CIVIL AND ENVIRONMENTAL ENGINEERING
 4105 SEAMANS CENTER FOR THE
 ENGINEERING ARTS AND SCIENCES
 103 S CAPITOL ST
 IOWA CITY, IOWA 52242
 PHONE: 319.335.5647
 FAX: 319.335.5660
 EMAIL: civil-hawks@iowad.edu



EDUCATIONAL - NOT FOR CONSTRUCTION

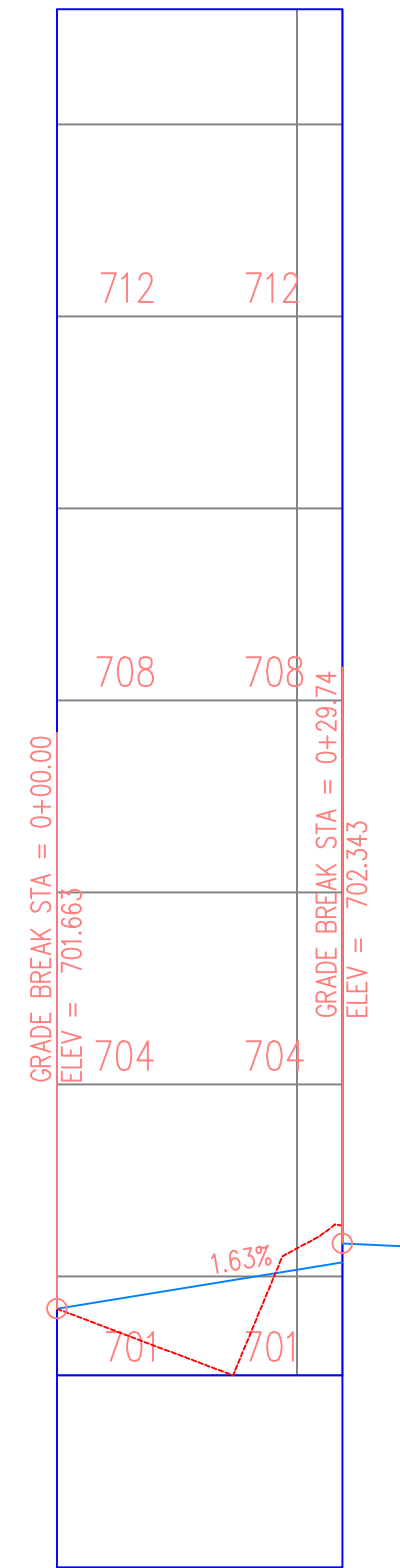
Agency St. Trail Project
 122 Broadway St.
 West Burlington, IA 52655

SHEET NAME
 Gear Ave. to W
 Walmart Driveway

SHEET NO.
D-07



Walmart Sidewalk Profile



PROJECT: CEE: 4850
 DATE : 11/18/2024
 DRAWN BY: Blake Misfeldt
 REVISION:

THE UNIVERSITY OF IOWA
CIVIL AND ENVIRONMENTAL ENGINEERING
 4105 SEAMANS CENTER FOR THE
 ENGINEERING ARTS AND SCIENCES
 103 S CAPITOL ST
 IOWA CITY, IOWA 52242
 PHONE: 319.335.5647
 FAX: 319.335.5660
 EMAIL: civil-hawks@iowa.edu

IOWA
 CIVIL & ENVIRONMENTAL
 ENGINEERING

EDUCATIONAL - NOT
 FOR CONSTRUCTION

Agency St. Trail Project

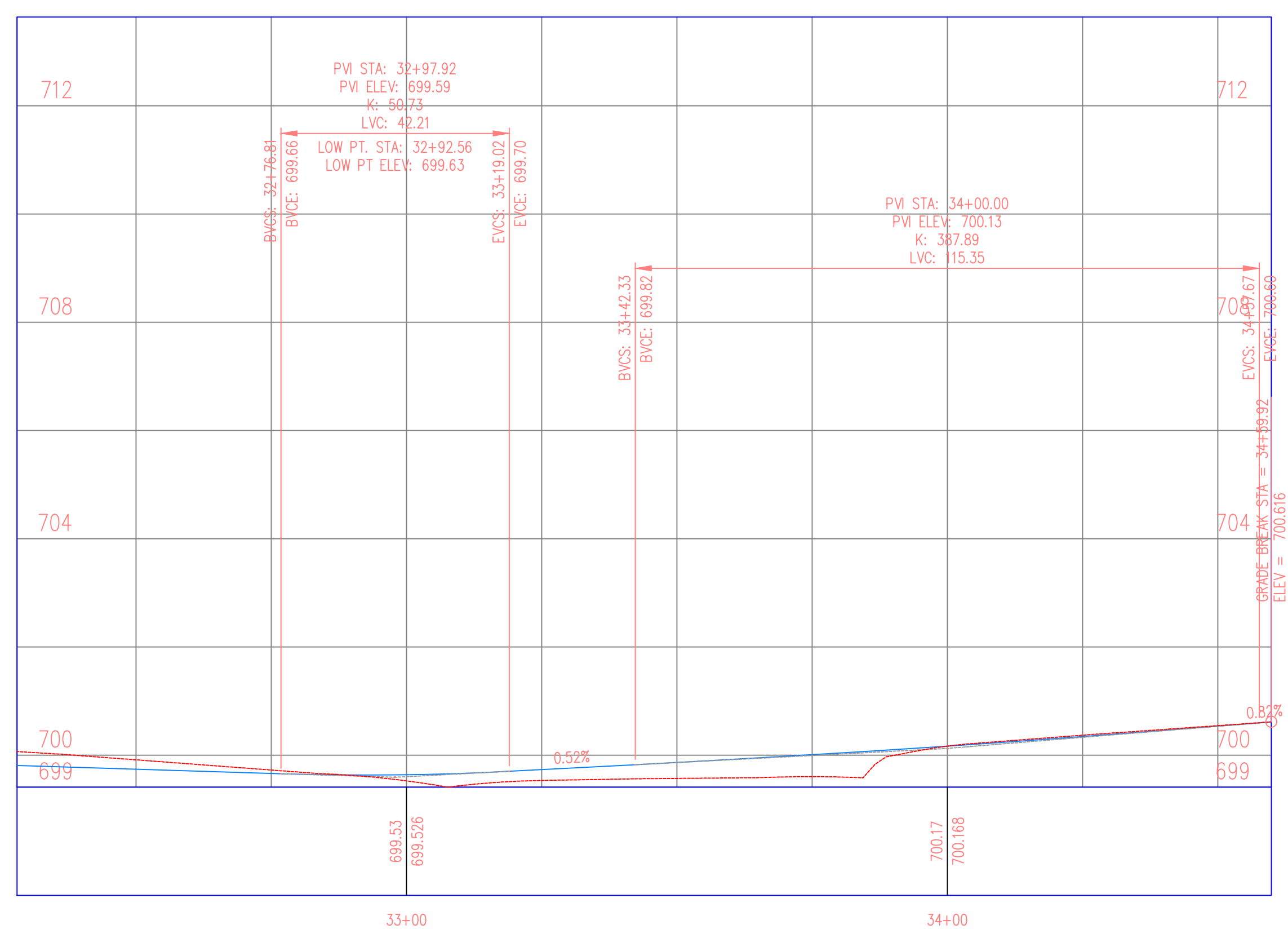
122 Broadway St.
 West Burlington, IA 52655

SHEET NAME
 Walmart
 Sidewalk

SHEET NO.
D-08



Gear Ave. to W Walmart Driveway Profile



PROJECT:	CEE: 4850
DATE :	11/18/2024
DRAWN BY:	Bloke Misfeldt
REVISION:	

THE UNIVERSITY OF IOWA
CIVIL AND ENVIRONMENTAL ENGINEERING
 4105 SEAMANS CENTER FOR THE
 ENGINEERING ARTS AND SCIENCES
 103 S CAPITOL ST
 IOWA CITY, IOWA 52242
 PHONE: 319.335.5647
 FAX: 319.335.5660
 EMAIL: civil-hawks@iowa.edu



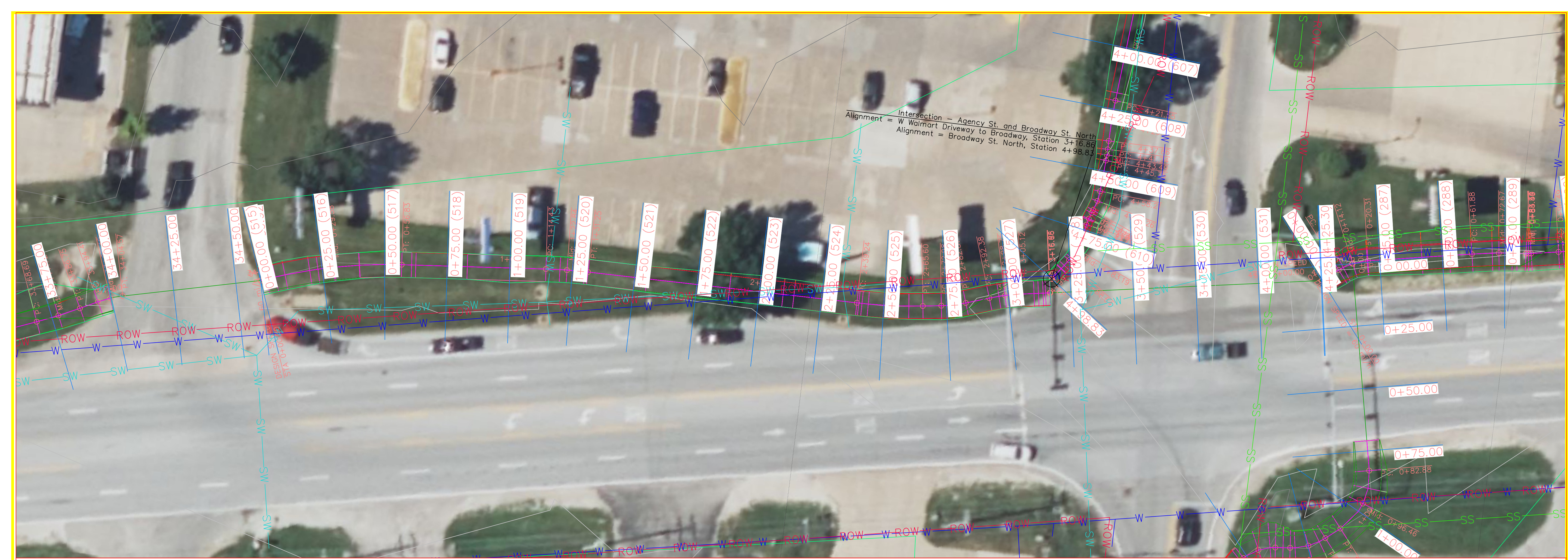
EDUCATIONAL - NOT FOR CONSTRUCTION

Agency St. Trail Project

122 Broadway St.
 West Burlington, IA 52655

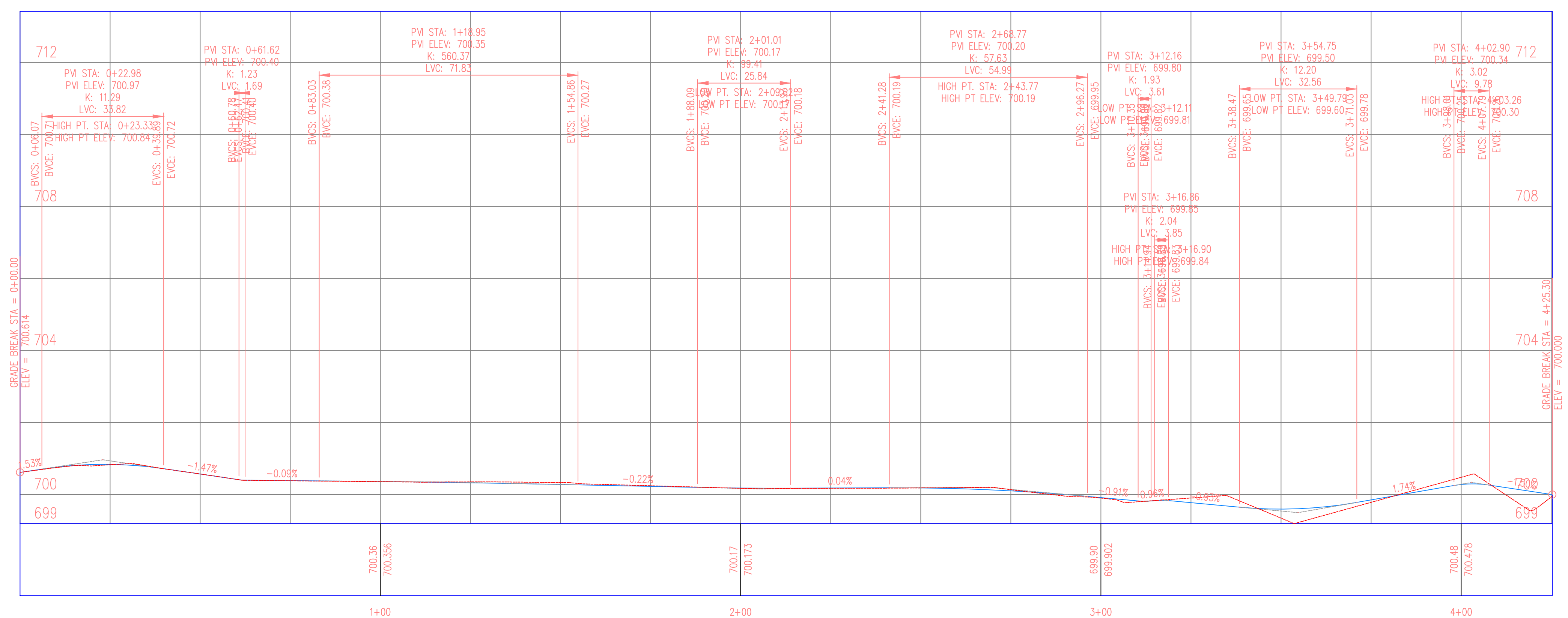
SHEET NAME
 Gear Ave. to W
 Walmart Driveway

SHEET NO.
D-09



Intersection - Agency St. and Broadway St. North
 Alignment = W Walmart Driveway to Broadway, Station 3+16.88
 Alignment = Broadway St. North, Station 4+98.83

W Walmart Driveway to Broadway St. Profile



PROJECT: CEE: 4850
 DATE: 11/18/2024
 DRAWN BY: Blake Misfeldt
 REVISION:

THE UNIVERSITY OF IOWA
CIVIL AND ENVIRONMENTAL ENGINEERING
 4105 SEAMANS CENTER FOR THE
 ENGINEERING ARTS AND SCIENCES
 103 S CAPITOL ST
 IOWA CITY, IOWA 52242
 PHONE: 319.335.5647
 FAX: 319.335.5660
 EMAIL: civil-hawks@iowa.edu



EDUCATIONAL - NOT FOR CONSTRUCTION

Agency St. Trail Project
 122 Broadway St.
 West Burlington, IA 52655

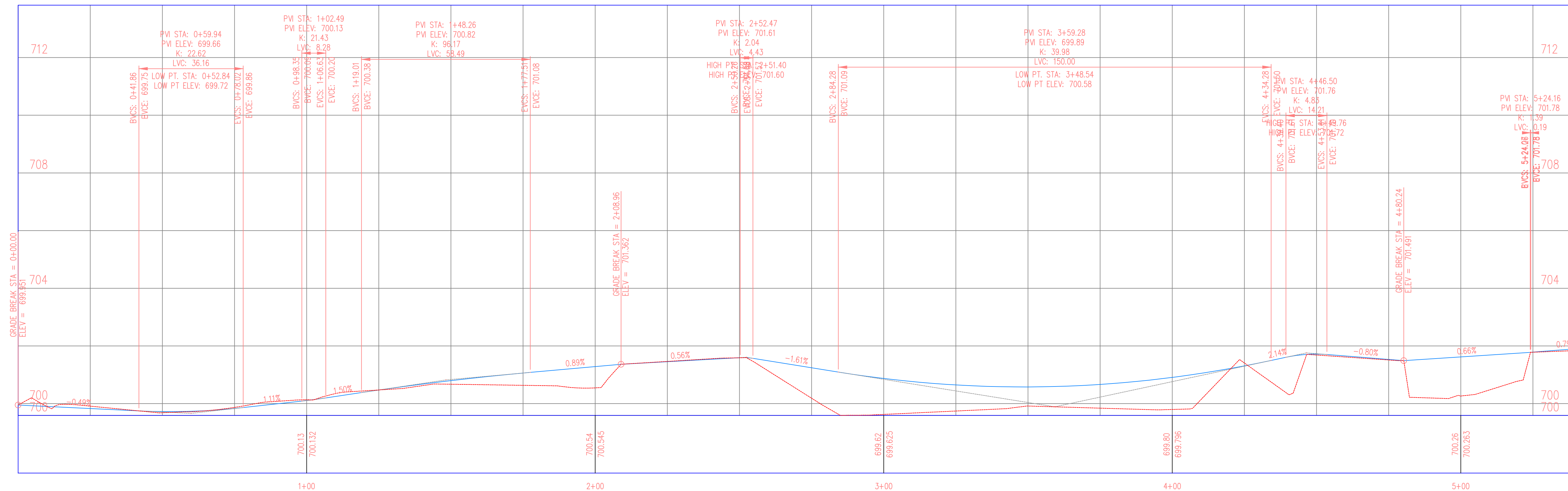
SHEET NAME
 W Walmart Driveway
 to Broadway St.

SHEET NO.
D-10



MATCH LINE - 1
 AT STATION - 5+38.00
 NEXT SHEET NUMBER: 2

Broadway St. to West Burlington Ave. Profile



PROJECT: CEE: 4850
 DATE: 11/18/2024
 DRAWN BY: Blake Misfeldt
 REVISION:

THE UNIVERSITY OF IOWA
 CIVIL AND ENVIRONMENTAL ENGINEERING
 4105 SEAMANS CENTER FOR THE
 ENGINEERING ARTS AND SCIENCES
 103 S CAPITOL ST
 IOWA CITY, IOWA 52242
 PHONE: 319.335.5647
 FAX: 319.335.5660
 EMAIL: civil-hawks@iowa.edu



EDUCATIONAL - NOT FOR CONSTRUCTION

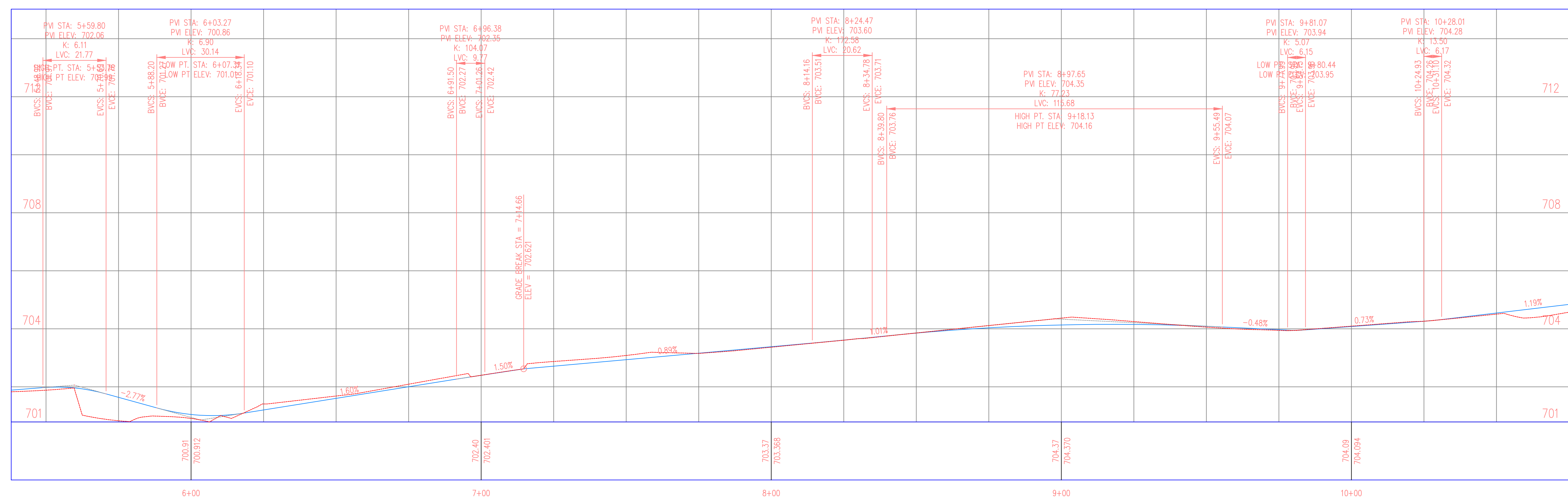
Agency St. Trail Project
 122 Broadway St.
 West Burlington, IA 52655

SHEET NAME
 Broadway St. to W Burlington Ave.

SHEET NO.
D-11



Bradyway St. to West Burlington Ave. Profile



PROJECT: CEE: 4850
 DATE: 11/18/2024
 DRAWN BY: Blake Misfeldt
 REVISION:

THE UNIVERSITY OF IOWA
CIVIL AND ENVIRONMENTAL ENGINEERING
 4105 SEAMANS CENTER FOR THE
 ENGINEERING ARTS AND SCIENCES
 103 S CAPITOL ST
 IOWA CITY, IOWA 52242
 PHONE: 319.335.5647
 FAX: 319.335.5660
 EMAIL: civil-hawks@iowa.edu



EDUCATIONAL - NOT FOR CONSTRUCTION

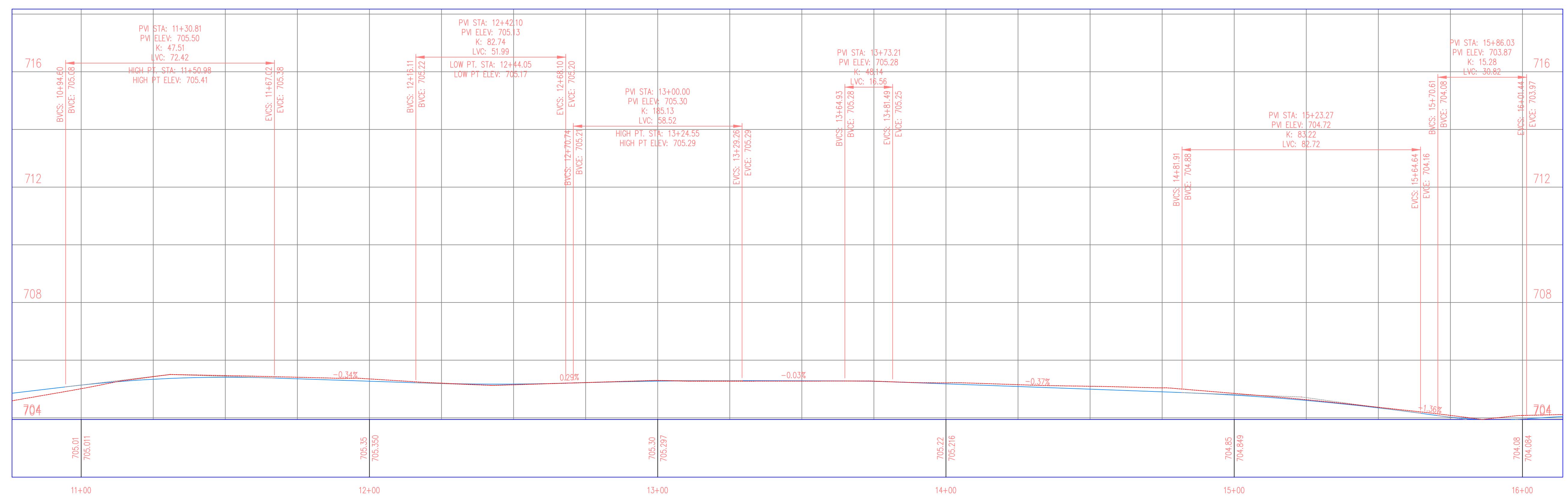
Agency St. Trail Project
 122 Broadway St.
 West Burlington, IA 52655

SHEET NAME
 Broadway St. to West Burlington Ave.

SHEET NO.
D-12



Broadway St. to West Burlington Ave. Profile



PROJECT: CEE: 4850
 DATE: 11/18/2024
 DRAWN BY: Bloke Misfeldt
 REVISION:

THE UNIVERSITY OF IOWA
CIVIL AND ENVIRONMENTAL ENGINEERING
 4105 SEAMANS CENTER FOR THE
 ENGINEERING ARTS AND SCIENCES
 103 S CAPITOL ST
 IOWA CITY, IOWA 52242
 PHONE: 319.335.5647
 FAX: 319.335.5660
 EMAIL: civil-hawks@iowa.edu



EDUCATIONAL - NOT FOR CONSTRUCTION

Agency St. Trail Project
 122 Broadway St.
 West Burlington, IA 52655

SHEET NAME
 Broadway St. to W Burlington Ave.

SHEET NO.
D-13

MATCH LINE - 3
 AT STATION 16+44.00
 PREVIOUS SHEET NUMBER: 3



Broadway St. to West Burlington Ave. Profile

704	704.3%				
708		GRADE BREAK STA = 16+29.25 ELEV = 704.150			
		GRADE BREAK STA = 16+37.33 ELEV = 704.170			
			712	712	
			716	716	

PROJECT: CEE: 4850
 DATE: 11/18/2024
 DRAWN BY: Blake Misfeldt
 REVISION:

THE UNIVERSITY OF IOWA
CIVIL AND ENVIRONMENTAL ENGINEERING
 4105 SEAMANS CENTER FOR THE
 ENGINEERING ARTS AND SCIENCES
 103 S CAPITOL ST
 IOWA CITY, IOWA 52242
 PHONE: 319.335.5647
 FAX: 319.335.5660
 EMAIL: civil-hawks@iowa.edu

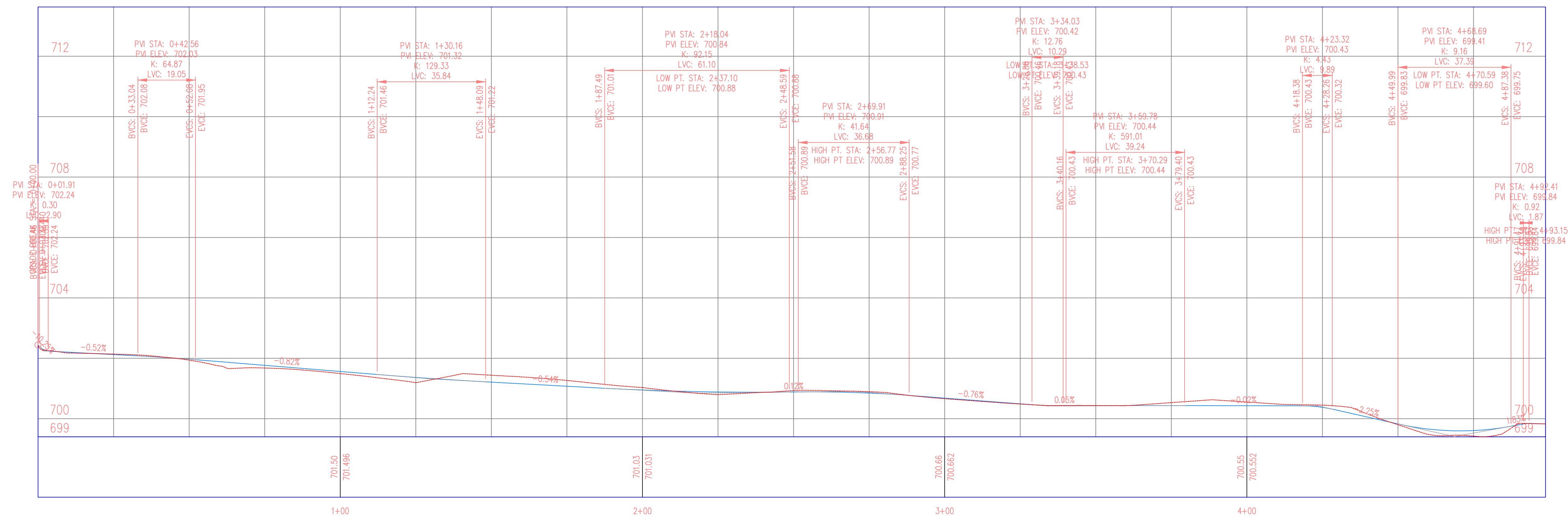


EDUCATIONAL - NOT FOR CONSTRUCTION

Agency St. Trail Project
 122 Broadway St.
 West Burlington, IA 52655

SHEET NAME
 Broadway St. to W
 Burlington Ave.

SHEET NO.
D-14



THE UNIVERSITY OF IOWA
CIVIL AND ENVIRONMENTAL ENGINEERING
 4105 SEAMANS CENTER FOR THE
 ENGINEERING ARTS AND SCIENCES
 103 S CAPITOL ST
 IOWA CITY, IOWA 52242
 PHONE: 319.335.5647
 FAX: 319.335.5660
 EMAIL: civil-hawks@iowa.edu



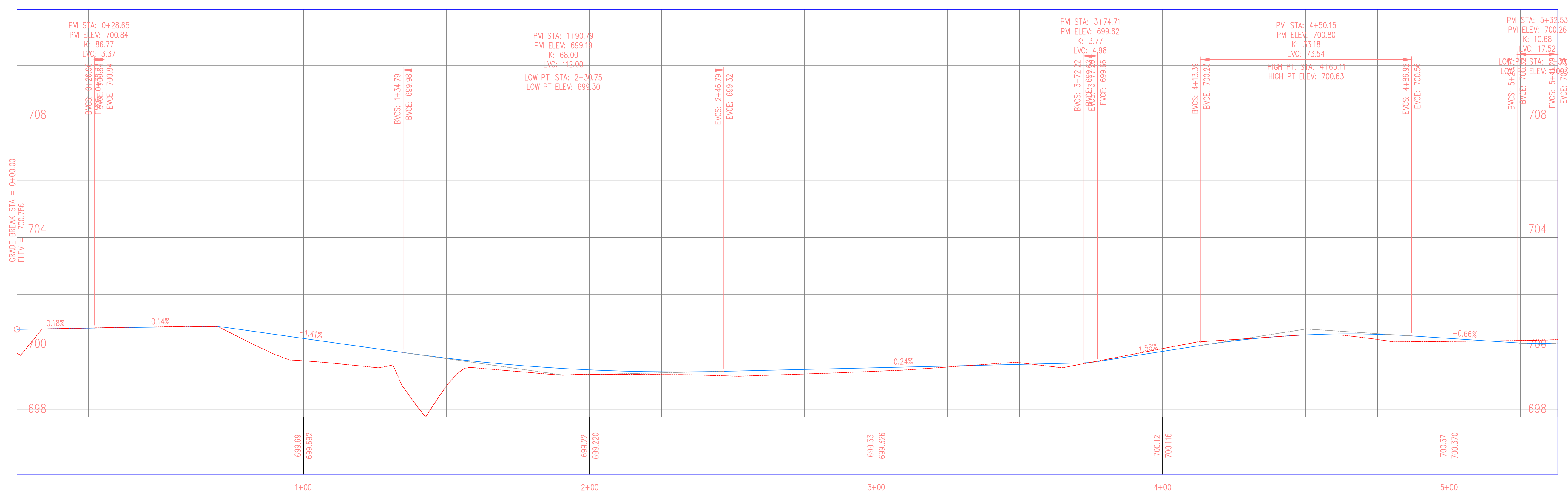
EDUCATIONAL - NOT FOR CONSTRUCTION

Agency St. Trail Project

122 Broadway St.
 West Burlington, IA 52655

SHEET NAME
 Broadway St. North of Agency St.

SHEET NO.
D-15



THE UNIVERSITY OF IOWA
CIVIL AND ENVIRONMENTAL ENGINEERING
 4105 SEAMANS CENTER FOR THE
 ENGINEERING ARTS AND SCIENCES
 103 S CAPITOL ST
 IOWA CITY, IOWA 52242
 PHONE: 319.335.5647
 FAX: 319.335.5660
 EMAIL: civil-hawks@iowa.edu



EDUCATIONAL - NOT FOR CONSTRUCTION

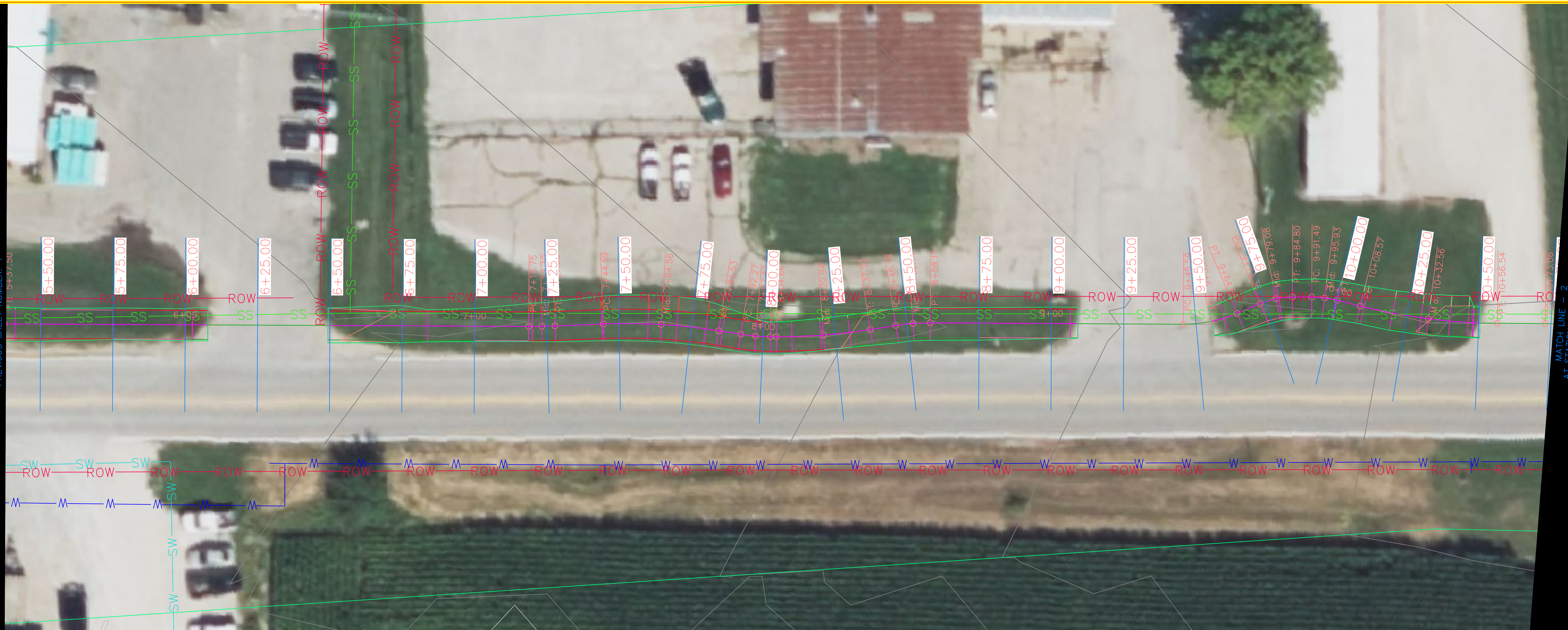
Agency St. Trail Project
 122 Broadway St.
 West Burlington, IA 52655

SHEET NAME
 Agency St. to
 Rec Plex

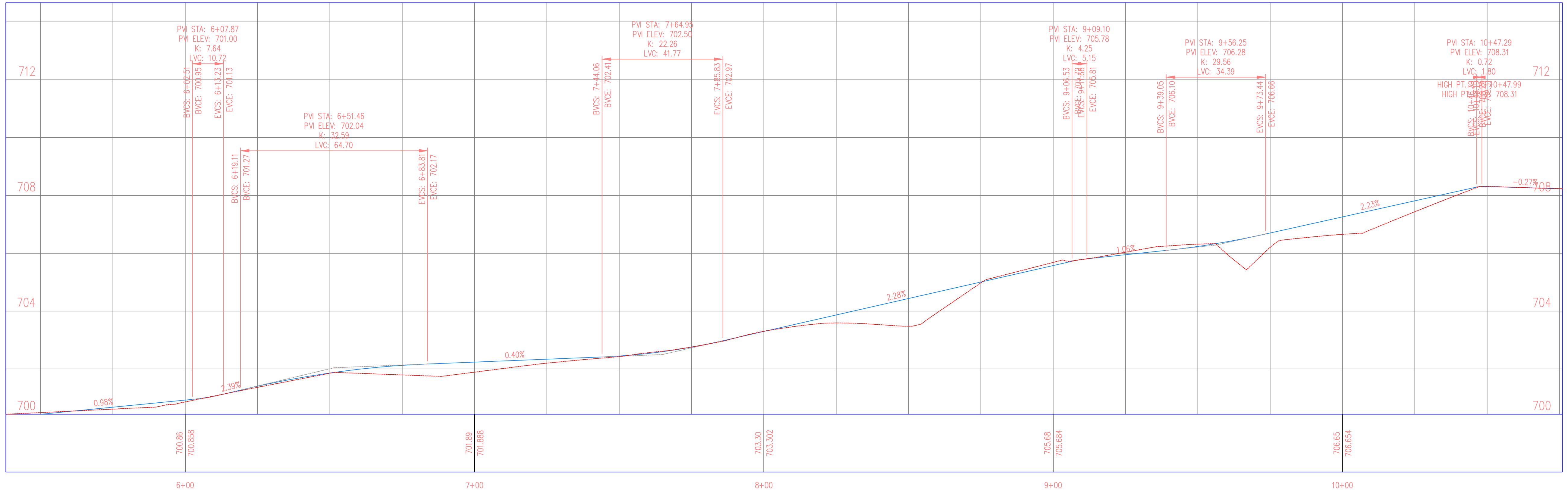
SHEET NO.
D-16

MATCH LINE - 1
AT STA ROW 5+38.00
PREVIOUS SHEET NUMBER: 1

MATCH LINE - 2
AT STATION 10+76.00
NEXT SHEET NUMBER: 3



Agency St. to Rec Plex Profile



PROJECT: CEE: 4850
DATE: 11/18/2024
DRAWN BY: Blake Misfeldt
REVISION:

THE UNIVERSITY OF IOWA
CIVIL AND ENVIRONMENTAL ENGINEERING
4105 SEAMANS CENTER FOR THE
ENGINEERING ARTS AND SCIENCES
103 S CAPITOL ST
IOWA CITY, IOWA 52242
PHONE: 319.335.5647
FAX: 319.335.5660
EMAIL: civil-hawks@iowa.edu

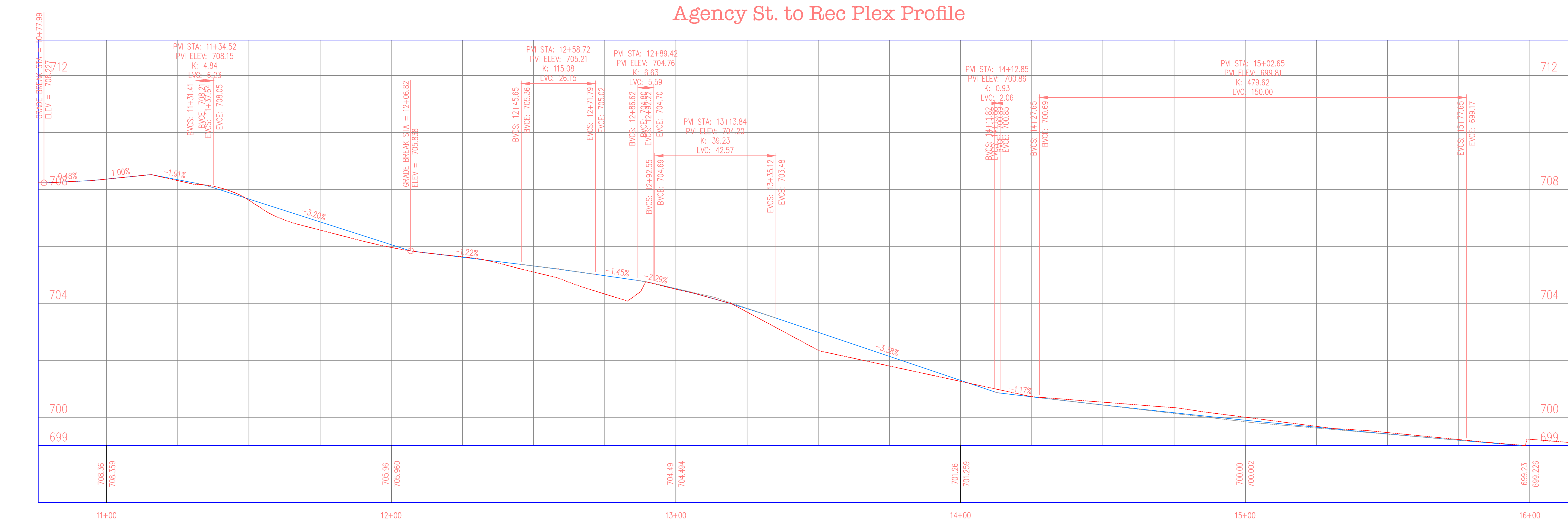
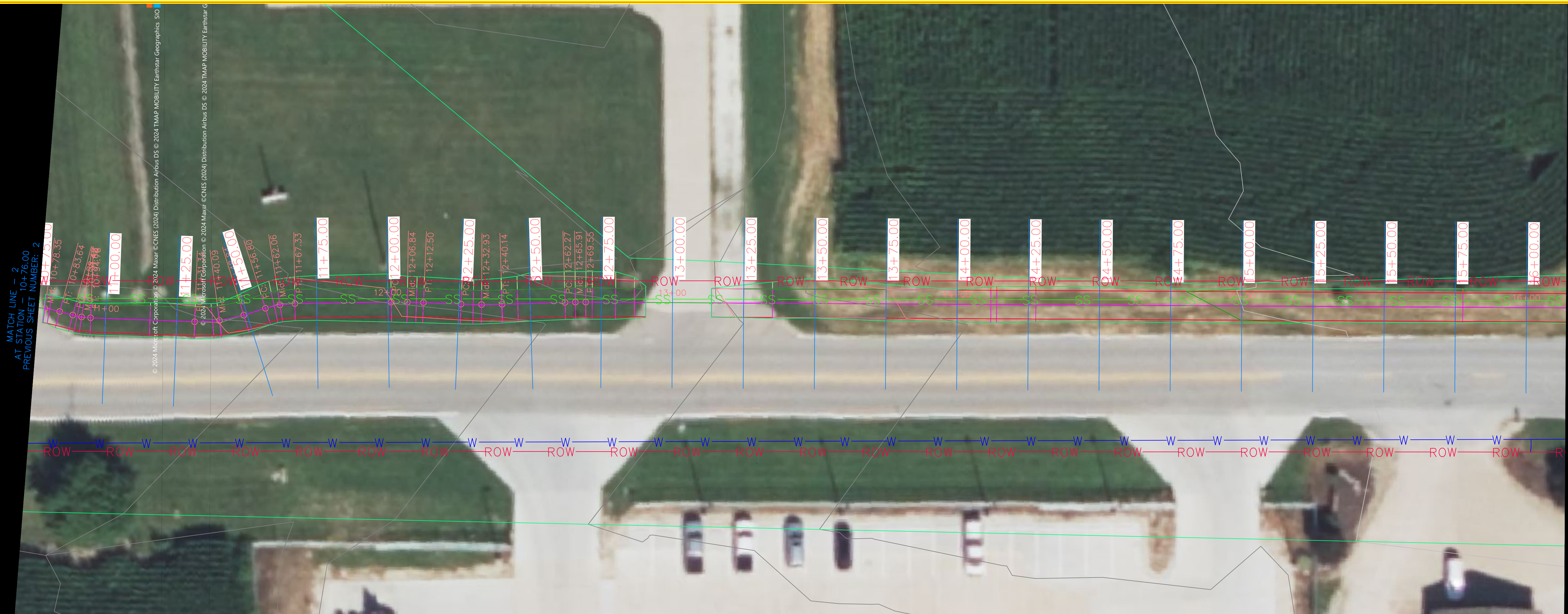
IOWA
CIVIL & ENVIRONMENTAL
ENGINEERING

EDUCATIONAL - NOT
FOR CONSTRUCTION

Agency St. Trail Project
122 Broadway St.
West Burlington, IA 52655

SHEET NAME
Agency St. to
Rec Plex

SHEET NO.
D-17



PROJECT: CEE: 4850
 DATE: 11/18/2024
 DRAWN BY: Blake Misfeldt
 REVISION:

THE UNIVERSITY OF IOWA
CIVIL AND ENVIRONMENTAL ENGINEERING
 4105 SEAMANS CENTER FOR THE
 ENGINEERING ARTS AND SCIENCES
 103 S CAPITOL ST
 IOWA CITY, IOWA 52242
 PHONE: 319.335.5647
 FAX: 319.335.5660
 EMAIL: civil-hawks@iowa.edu

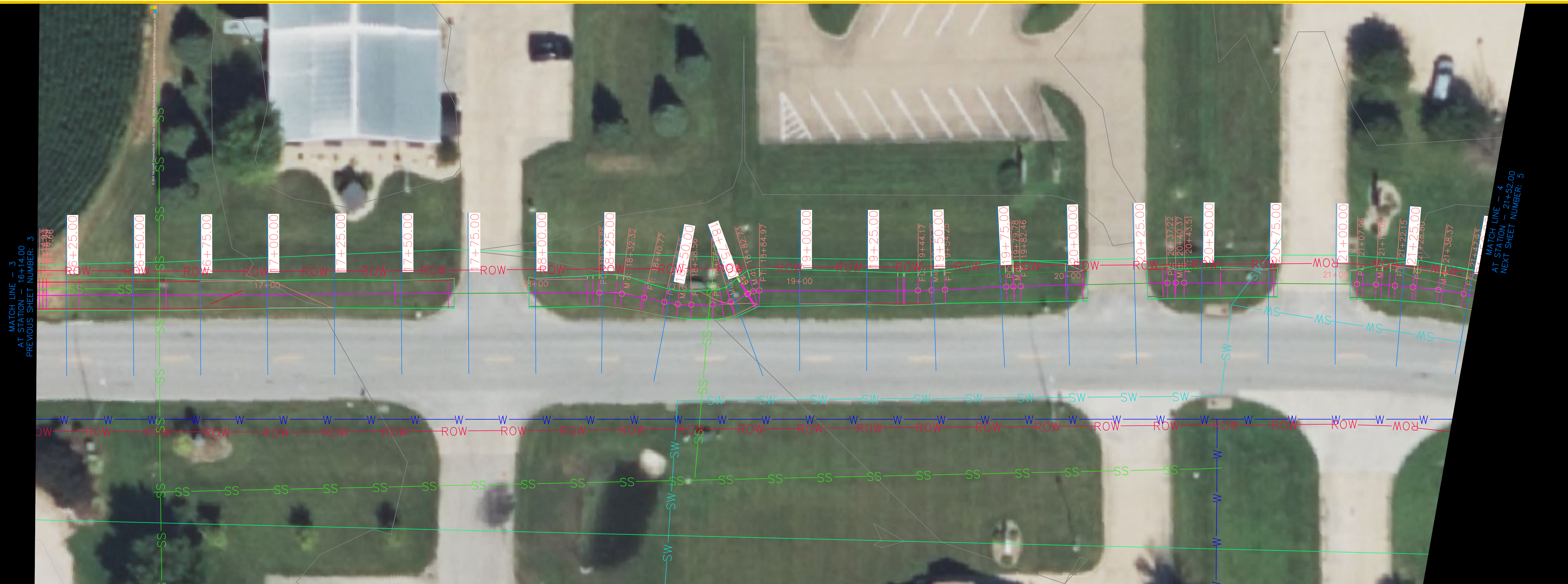
IOWA
 CIVIL & ENVIRONMENTAL
 ENGINEERING

EDUCATIONAL - NOT
 FOR CONSTRUCTION

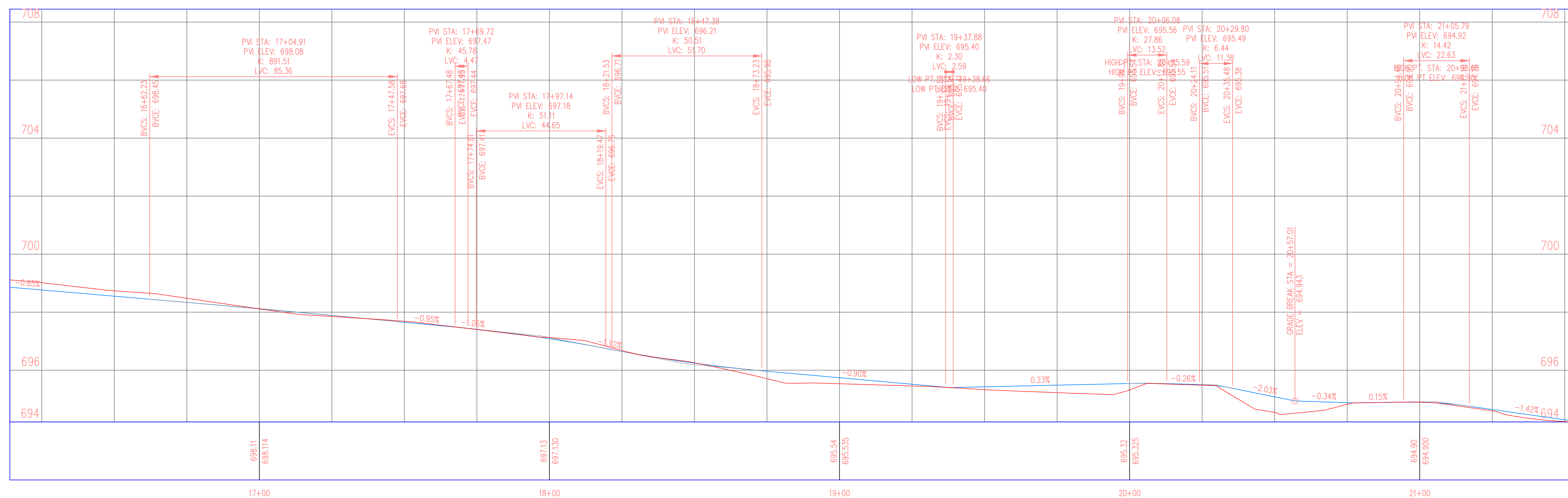
Agency St. Trail Project
 122 Broadway St.
 West Burlington, IA 52655

SHEET NAME
 Agency St. to
 Rec Plex

SHEET NO.
D-18



Agency St. to Rec Plex Profile



PROJECT:	CEE: 4850
DATE :	11/18/2024
DRAWN BY:	Bloke Misfeldt
REVISION:	

THE UNIVERSITY OF IOWA
CIVIL AND ENVIRONMENTAL ENGINEERING
 4105 SEAMANS CENTER FOR THE
 ENGINEERING ARTS AND SCIENCES
 103 S CAPITOL ST
 IOWA CITY, IOWA 52242
 PHONE: 319.335.5647
 FAX: 319.335.5660
 EMAIL: civil-hawks@iowa.edu

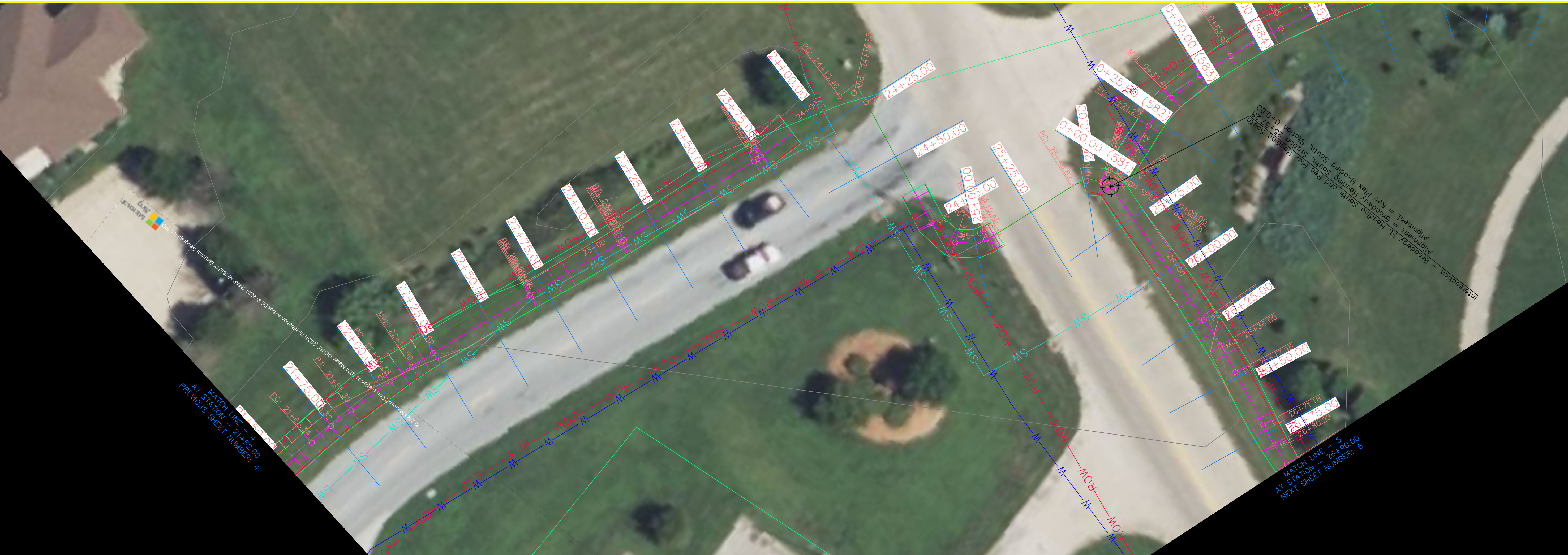


EDUCATIONAL - NOT FOR CONSTRUCTION

Agency St. Trail Project
 122 Broadway St.
 West Burlington, IA 52655

SHEET NAME
 Agency St. to
 Rec Plex

SHEET NO.
D-19



PROJECT: CEE: 4850
 DATE: 11/18/2024
 DRAWN BY: Blake Mistfeldt
 REVISION:

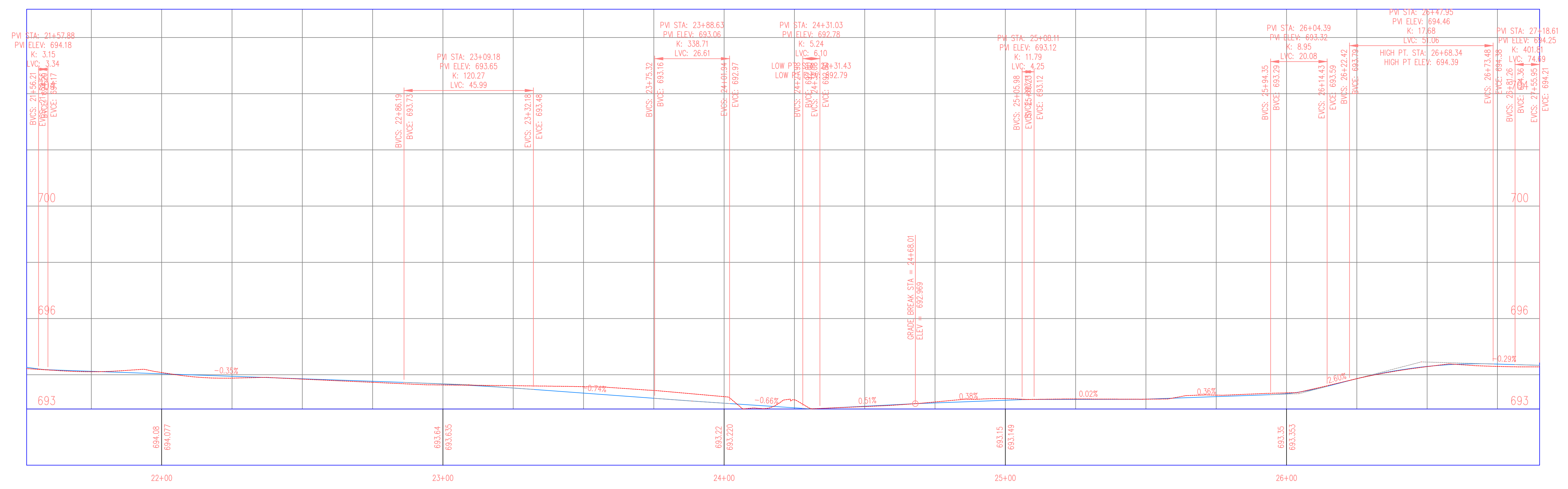
THE UNIVERSITY OF IOWA
CIVIL AND ENVIRONMENTAL ENGINEERING
 4105 SEAMANS CENTER FOR THE
 ENGINEERING ARTS AND SCIENCES
 103 S CAPITOL ST
 IOWA CITY, IOWA 52242
 PHONE: 319.335.5647
 FAX: 319.335.5660
 EMAIL: civil-hawks@iowa.edu



EDUCATIONAL - NOT FOR CONSTRUCTION

Agency St. Trail Project
 122 Broadway St.
 West Burlington, IA 52655

Agency St. to Rec Plex Profile

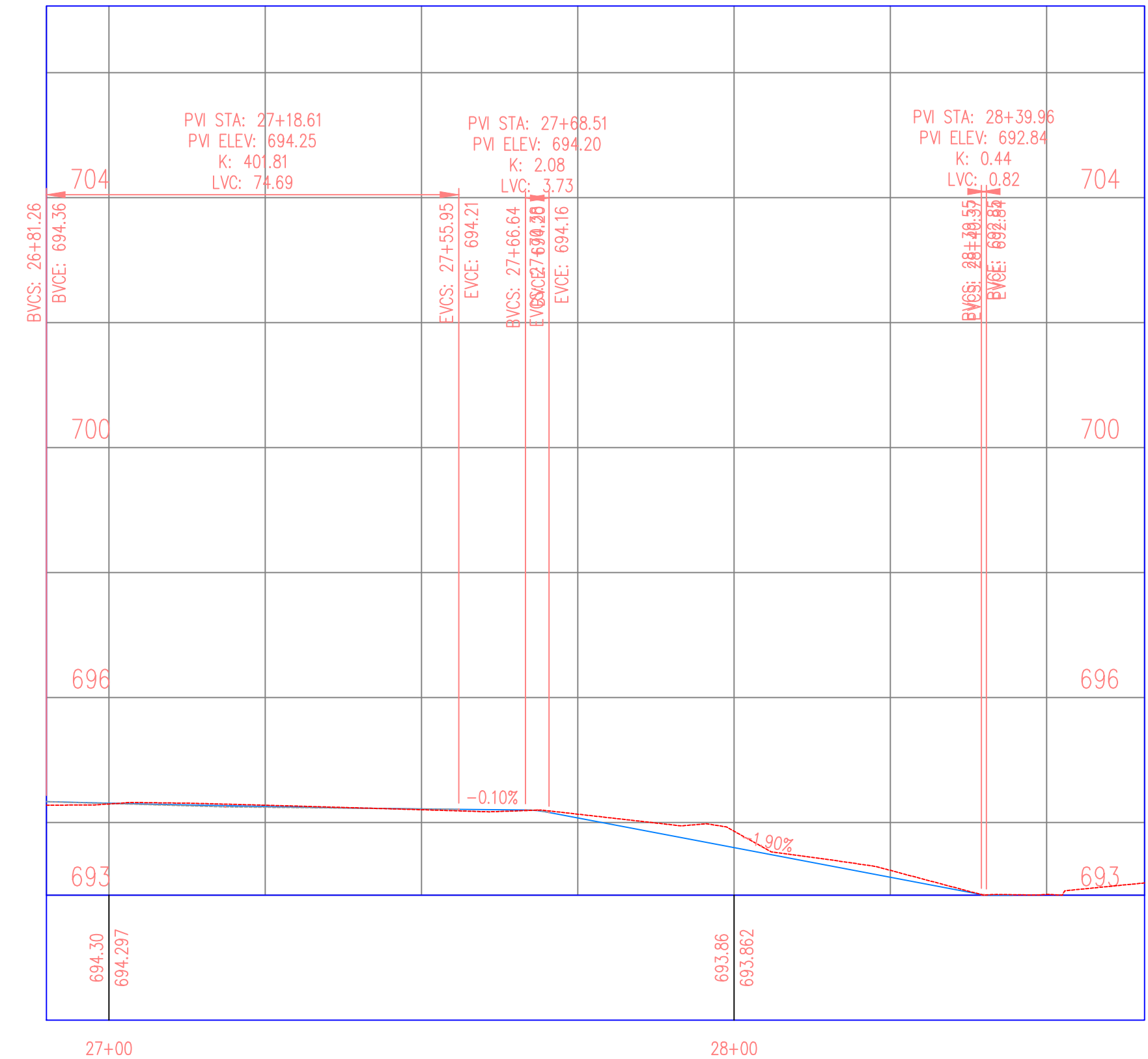


SHEET NAME
 Agency St. to Rec Plex

SHEET NO.
D-20



Agency St. to Rec Plex Profile



PROJECT:	CEE: 4850
DATE :	11/18/2024
DRAWN BY:	Bieke Misfeldt
REVISION:	

THE UNIVERSITY OF IOWA
CIVIL AND ENVIRONMENTAL ENGINEERING
 4105 SEAMANS CENTER FOR THE
 ENGINEERING ARTS AND SCIENCES
 103 S CAPITOL ST
 IOWA CITY, IOWA 52242
 PHONE: 319.335.5647
 FAX: 319.335.5660
 EMAIL: civil-hawks@iowad.edu

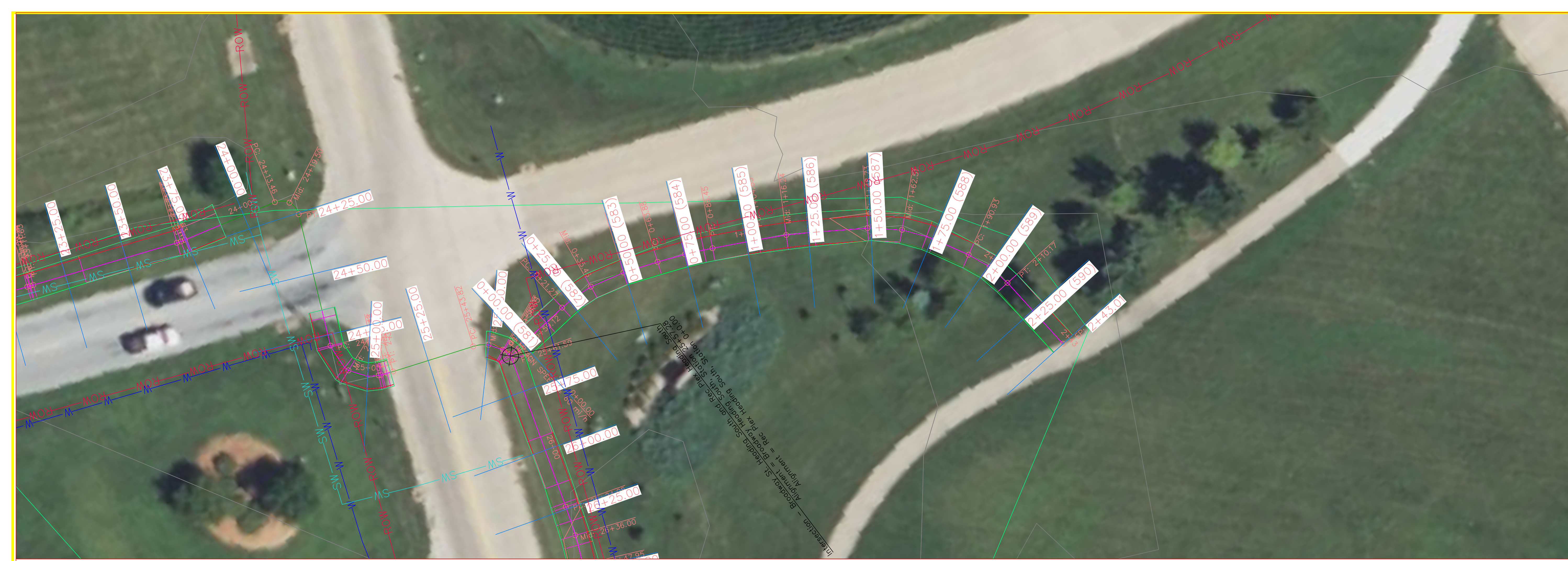


EDUCATIONAL - NOT FOR CONSTRUCTION

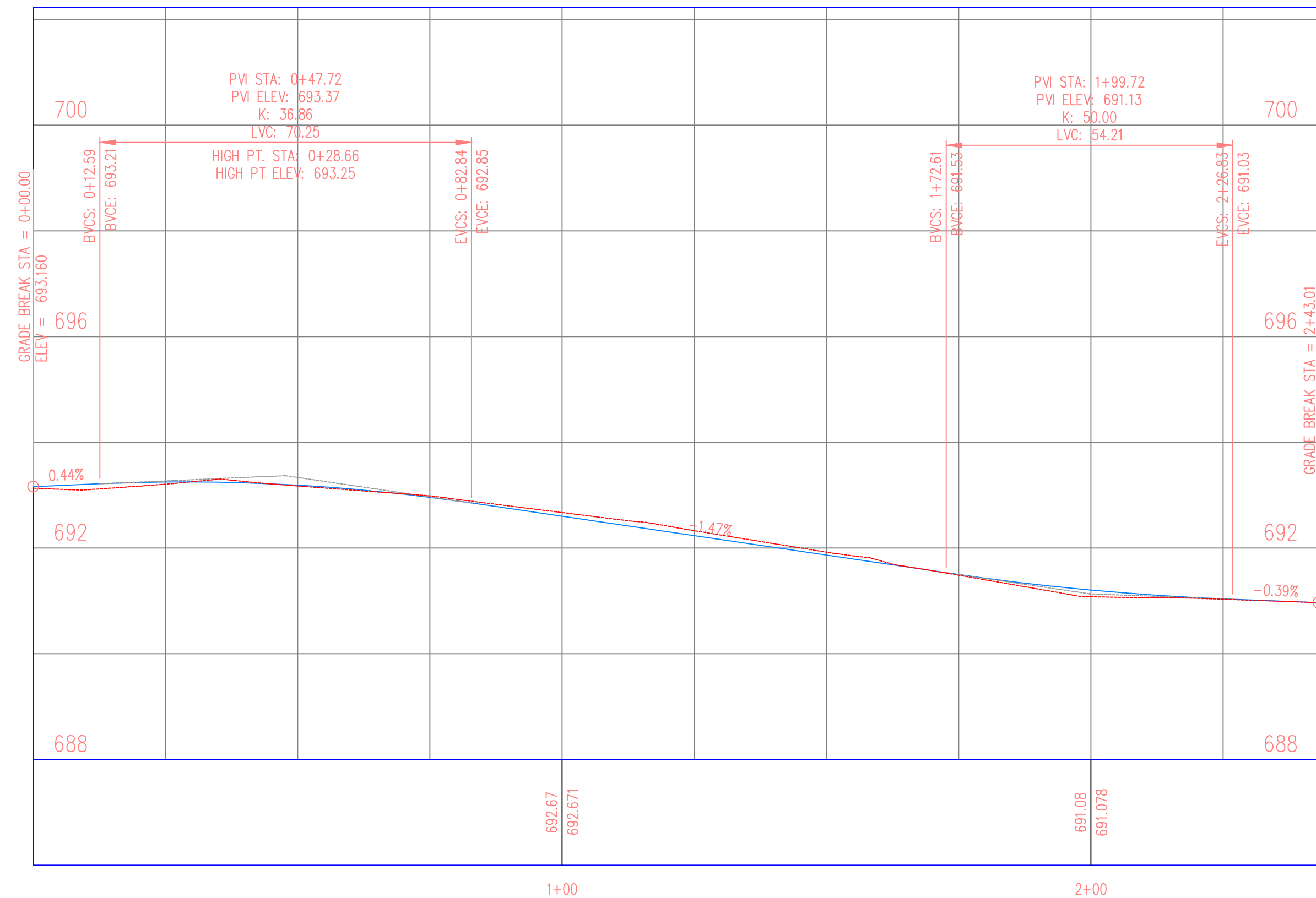
Agency St. Trail Project
 122 Broadway St.
 West Burlington, IA 52655

SHEET NAME
 Agency St. to
 Rec Plex

SHEET NO.
D-21



Extra Rec Plex Trail Heading South Profile



PROJECT: CEE: 4850
 DATE: 11/18/2024
 DRAWN BY: Blake Misfeldt
 REVISION:

THE UNIVERSITY OF IOWA
CIVIL AND ENVIRONMENTAL ENGINEERING
 4105 SEAMANS CENTER FOR THE
 ENGINEERING ARTS AND SCIENCES
 103 S CAPITOL ST
 IOWA CITY, IOWA 52242
 PHONE: 319.335.5647
 FAX: 319.335.5660
 EMAIL: civil-hawks@iowa.edu

IOWA
 CIVIL & ENVIRONMENTAL
 ENGINEERING

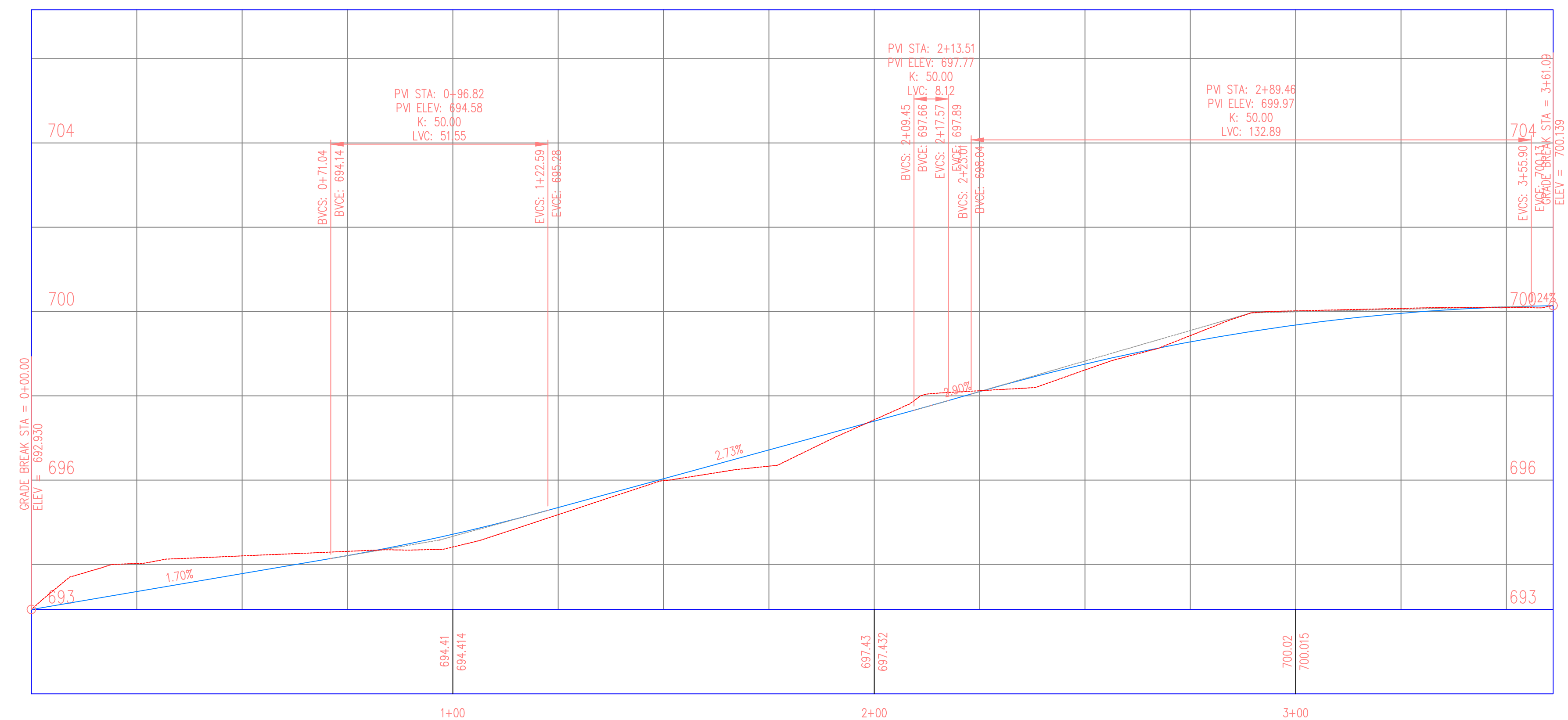
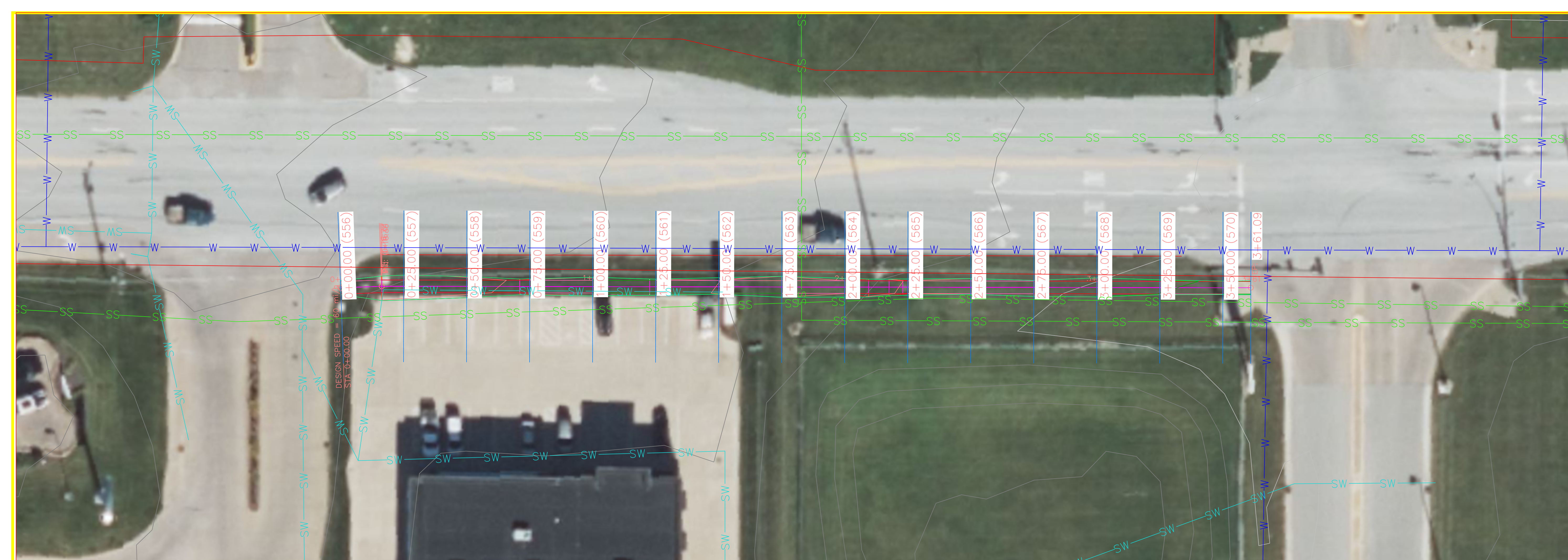
EDUCATIONAL - NOT
 FOR CONSTRUCTION

Agency St. Trail Project

122 Broadway St.
 West Burlington, IA 52655

SHEET NAME
 Rec Plex Heading
 South

SHEET NO.
D-22



THE UNIVERSITY OF IOWA
CIVIL AND ENVIRONMENTAL ENGINEERING
 4105 SEAMANS CENTER FOR THE
 ENGINEERING ARTS AND SCIENCES
 103 S CAPITOL ST
 IOWA CITY, IOWA 52242
 PHONE: 319.335.5647
 FAX: 319.335.5660
 EMAIL: civil-hawks@iowa.edu

IOWA
 CIVIL & ENVIRONMENTAL
 ENGINEERING

EDUCATIONAL - NOT
 FOR CONSTRUCTION

Agency St. Trail Project

122 Broadway St.
 West Burlington, IA 52655

SHEET NAME
 Mall Intersection
 Sidewalk

SHEET NO.
D-23



remove existing right turn arrow

remove existing centerlines to new stop bar

remove existing stop bar

pedestrian pushbutton 3.5'

remove right lane thru arrow

pedestrian push button 3.5'

PROJECT:	CEE: 4850
DATE :	11/18/2024
DRAWN BY:	Emma Oelmann
REVISION:	

THE UNIVERSITY OF IOWA
CIVIL AND ENVIRONMENTAL ENGINEERING
 4105 SEAMANS CENTER FOR THE
 ENGINEERING ARTS AND SCIENCES
 103 S CAPITOL ST
 IOWA CITY, IOWA 52242
 PHONE: 319.335.5647
 FAX: 319.335.5660
 EMAIL: civil-hawks@iowa.edu



EDUCATIONAL - NOT FOR CONSTRUCTION

Agency St. Trail Project

122 Broadway St.
West Burlington, IA 52655

SHEET NAME
Gear Ave. & Agency St. Intersection

SHEET NO.
D-24