



# **Bondurant, Iowa Sidewalk Inventory**

Completed by ICIGO at the University of Iowa as part of the Iowa Initiative for Sustainable Communities (IISC) 2023-24 partnership with the City of Bondurant.

May 2024

## **Introduction**

The sidewalk web map is an editable database for Bondurant to monitor sidewalk conditions within the city. This project builds upon Bondurant's current sidewalk map. This final web map allows real-time updates by Bondurant officials. They can add new sidewalks and update their condition, width, and type within the attribute table.

## **Data**

The project uses aerial photography provided by Esri. This high-resolution imagery served as a reference for identifying and updating sidewalk data within Bondurant. It will update as ESRI uploads new images to Arc Online.

The City of Bondurant provided previous sidewalk data for this project. This contained information regarding the location of existing sidewalks within the city limits. Bondurant also provided the city's corporate limits. Both were from the 'Maggie Test' geodatabase.

## **Methods**

First, the sidewalk and city boundary data were added to an Arc Online web map. This allows users to add and edit certain attributes remotely. Once online, missing sidewalks were added using the built-in sketch tool. Next, columns were added to the sidewalk layer for more information. The three columns were width, type, and condition.

## **Deliverable**

A project file and database were provided to City of Bondurant officials, allowing them to add data and attributes as appropriate.

Sidewalks can be updated on the Sidewalk\_Inventory\_Lines layer. By selecting the Sidewalk\_inven\_ExportFeature layer tool, you can add new sidewalks by clicking on the map. Following the highlighted areas in the screenshot below (fig. 1) brings you to this tool. First, click the 'Layers' button on the left (circled in red). Next, open the Sidewalk\_Inventory\_Lines layer highlighted on the left. Once this layer is open you can edit its features with the Edit button on the right. This allows the user to select the 'Sidewalk\_inven\_ExportFeatures' attribute. Here, you can click and draw new sidewalk features.



Figure 1: Interface of sidewalks Web Map. Clicking the highlighted “Sidewalk\_inven\_ExportFeature” allows the users to add lines over new sidewalks.

In the same Editor tab, users can also select current sidewalks with the ‘Select’ tool. This brings up the attributes of the selected sidewalk, including the added sidewalk width, type, and condition. These can be easily edited by clicking the field.



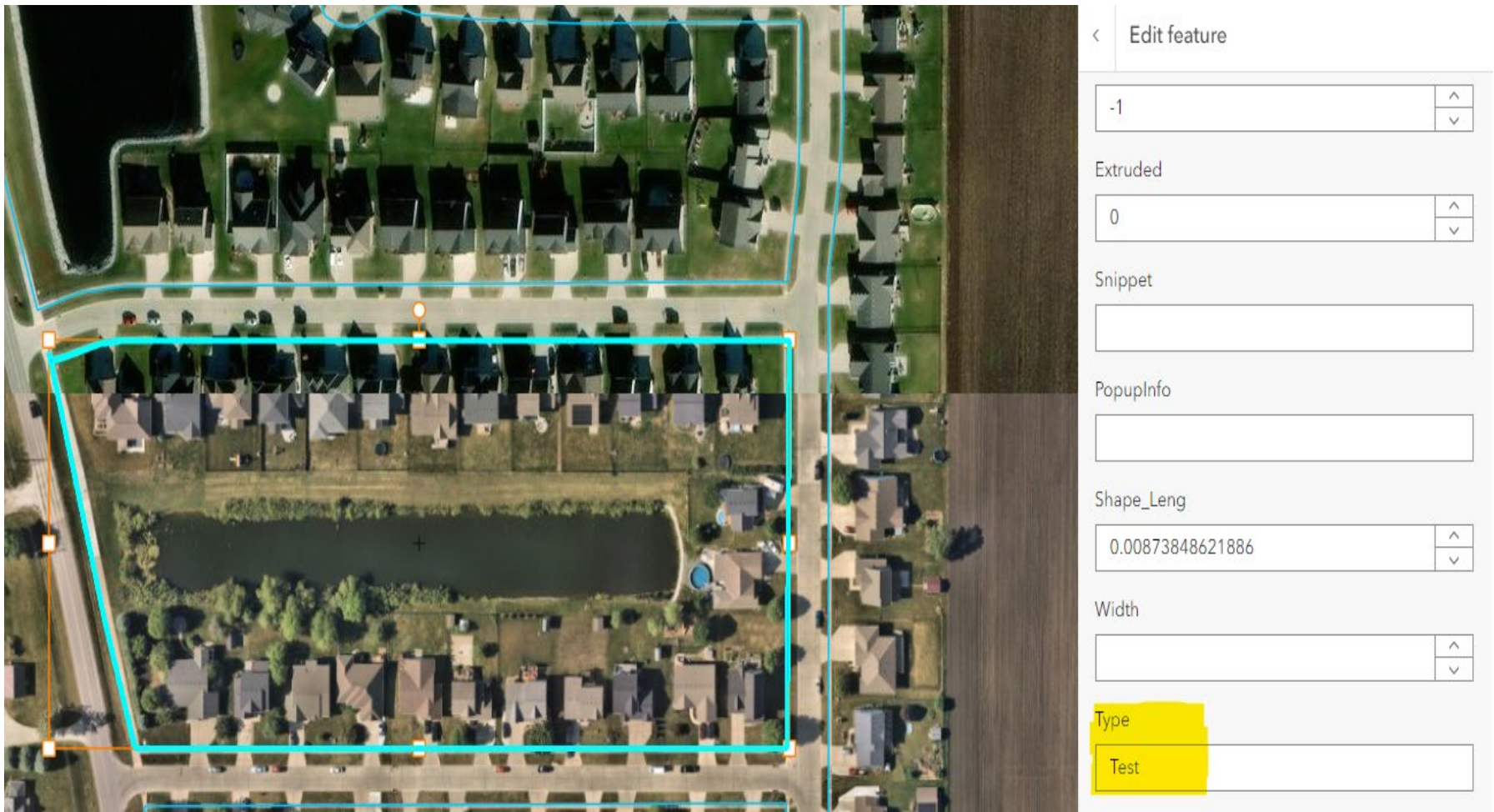


Figure 2: Attributes displayed after selecting a specific sidewalk. Note 'test' in the 'Type' field.