

# Scotch Grove Regional Trail

Christian Harms, Jaci Petersen, Kevin Plumb, Emily Shie  
Civil and Environmental Engineering  
University of Iowa

## Project Background and Scope

This is a trail design from Scotch Grove to connect into Camp Courageous and an upcoming Monticello Trail. The Regional Trail was designed for pedestrian, cyclist, and equestrian use.

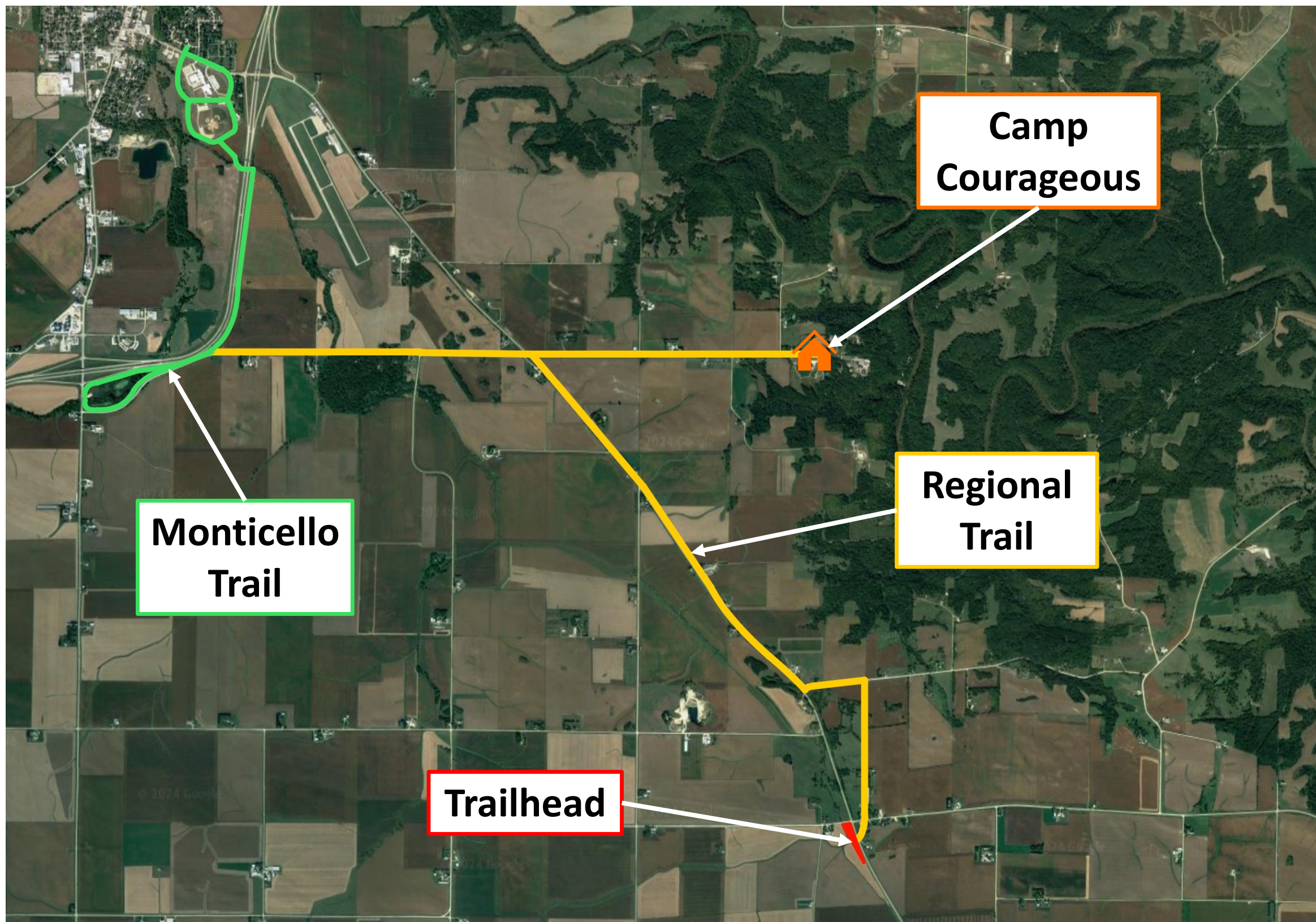


Figure 2. Regional Trail map.

## Regional Trail Route

The 10-foot-wide trail is 6.71 miles long. It begins at the trailhead in Scotch Grove, heads north along 116<sup>th</sup> Avenue as a shared use path (Fig. 6), turns west and follows 172<sup>nd</sup> Street before turning northwest to follow Highway 38 until the intersection of Highway 38 and 190<sup>th</sup> Street. From there, the trail goes east on 190<sup>th</sup> Street to connect to Camp Courageous, and west on 190<sup>th</sup> Street to tie into a future Monticello Trail. The trail is within the right-of-way except for shared usage along 116<sup>th</sup> Avenue and the bridge along 190<sup>th</sup> that crosses over Kitty Creek. The trail is open from sunrise to sunset.

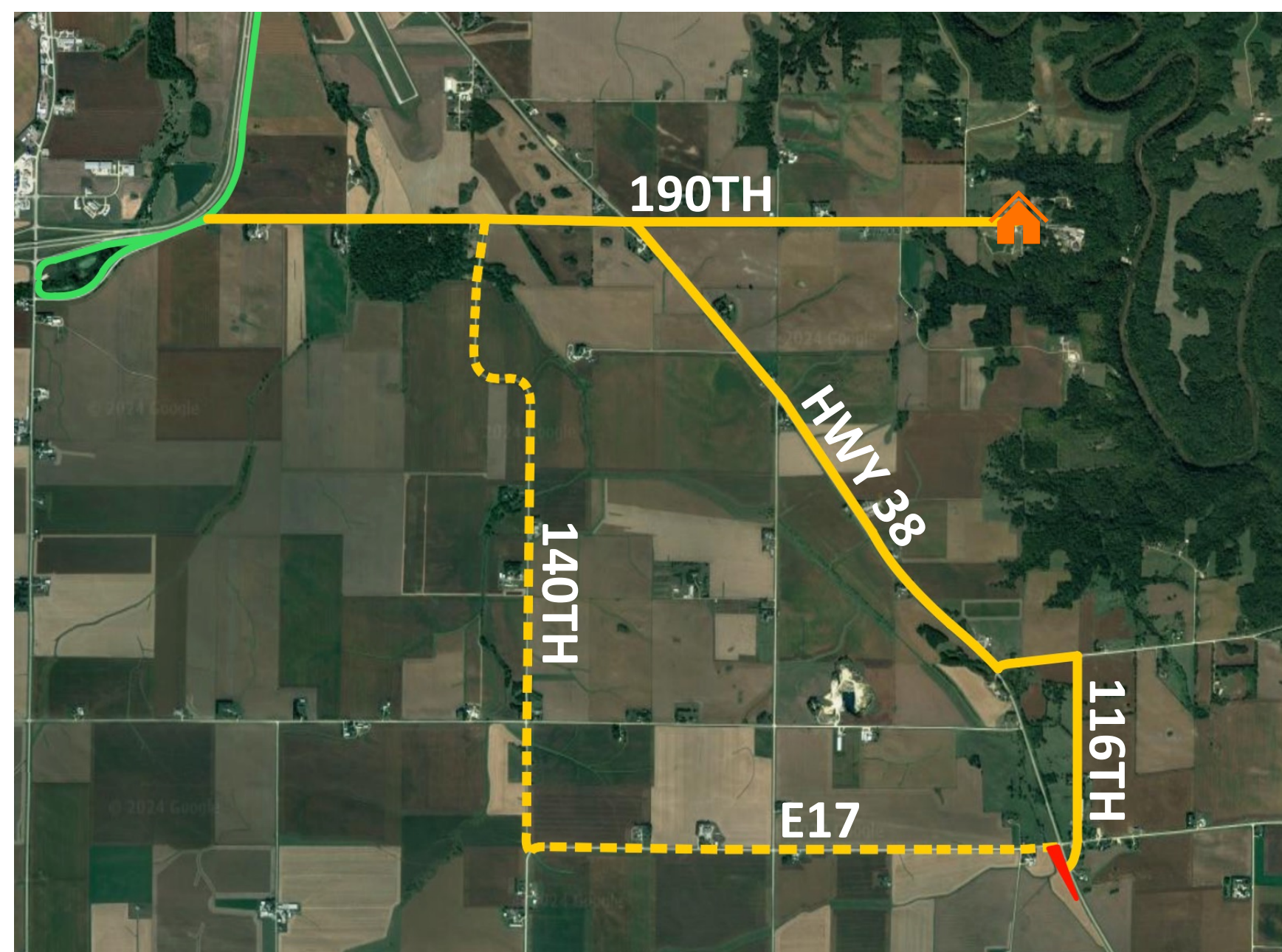


Figure 2. Idea for Regional Trail addition.

For a future trail addition to the Regional Trail (Fig. 2), the dashed line that goes along East 17<sup>th</sup> and 140<sup>th</sup> Avenue is a viable option and allows the trail to loop around.

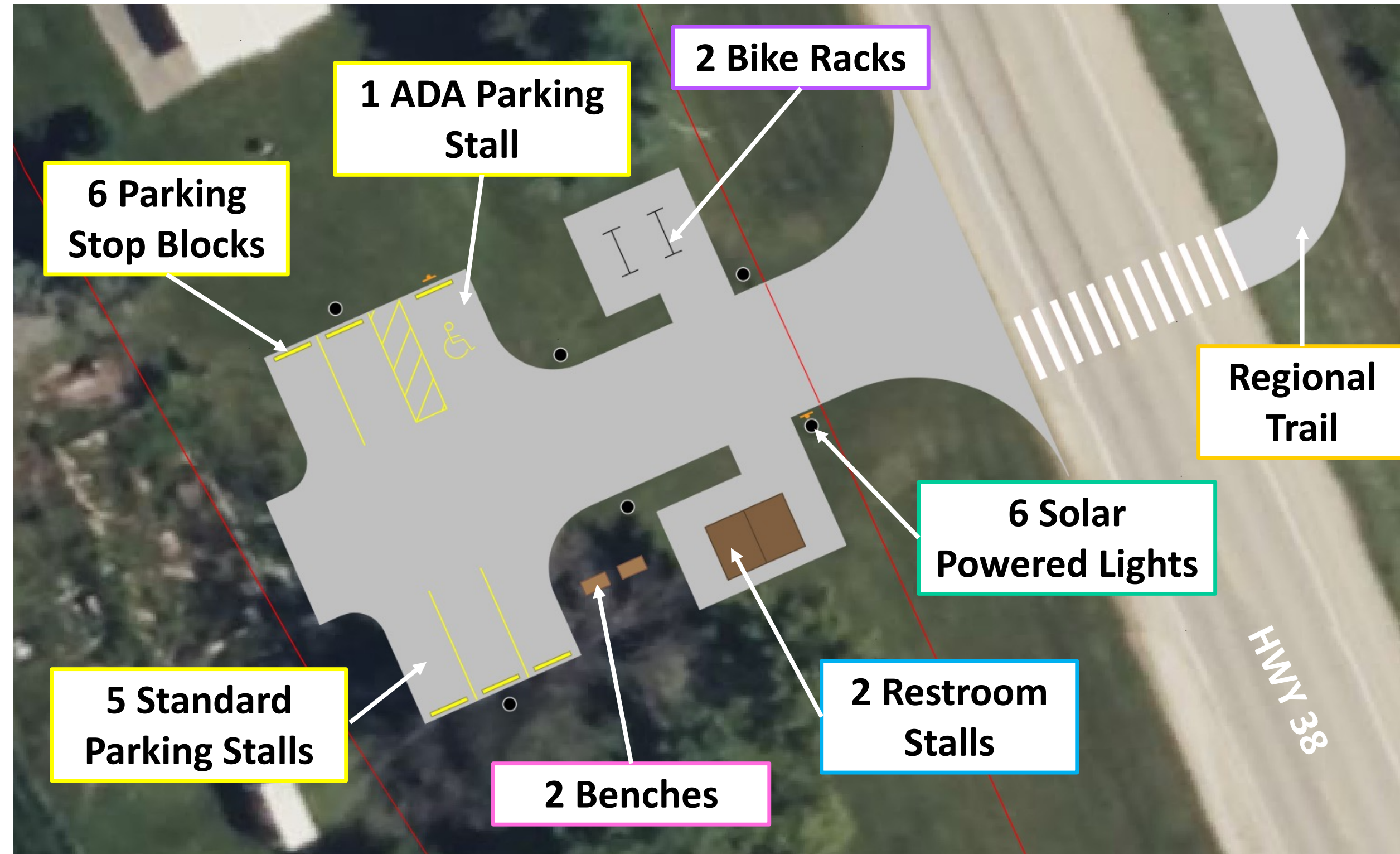


Figure 3. Layout of the trailhead.

## Trailhead

The trailhead is located on the southwest corner of East 17<sup>th</sup> and Highway 38 in Scotch Grove. It consists of a parking lot with five standard parking stalls, and one ADA space each with a parking stop block. There are also six lights, two benches, bike racks to hold up to four bikes total, and two unisex ADA compliant waterless restroom stalls that are prefabricated. The rest of the lot remains open for future projects. All products below are recommended by Sole Mates, and if needed, equivalent items should be found as replacements.



Figure 4. Trailhead.



Figure 5. Trailhead Features: (1) EnGo Leaf solar powered light (2) SWIE all-weather hand sanitizer station (3) prefabricated Romtec restroom (4) TreeTop Products park bench (5) CycleSafe bike racks (6) prefabricated Romtec restroom plan

## 3D Rendering



Figure 6. Rendering of shared use trail along 116<sup>th</sup> Avenue .

## Signage

Typical signage markings for 'Midblock Path-Roadway Intersection - Path is STOP Controlled' from AASHTO is used at all street crossings. There are two additional signs, the Regional Trail Description sign (Fig. 7) at the trailhead and the Share The Road sign (Fig. 8) along 116<sup>th</sup> Avenue and the bridge along 190<sup>th</sup> Street that crosses over Kitty Creek. All signage is from MUTCD.



Figures 7 & 8. Special signage.

## Construction Phasing



Figure 9. Phasing plan.

## Cost Estimation

The estimated cost for the design with the recommended materials of 6" Class A compacted stone for the trail and 5" thick asphalt for the trailhead gives a total cost of \$2,020,000.00.