

GENERAL NOTES

1. THESE NOTES SHALL BE CONSIDERED A PART OF THE WRITTEN SPECIFICATIONS
2. THE CONTRACTOR SHALL INSTALL ALL EQUIPMENT AND MATERIALS IN ACCORDANCE WITH MANUFACTURER'S RECOMMENDATIONS UNLESS SPECIFICALLY INDICATED OTHERWISE OR WHERE LOCAL CODES OR REGULATIONS TAKE PRECEDENCE
3. ALL WORK PERFORMED AND MATERIAL INSTALLED SHALL BE IN STRICT ACCORDANCE WITH ALL APPLICABLE CODES, REGULATIONS AND ORDINANCES. CONTRACTOR SHALL GIVE ALL NOTICES AND COMPLY WITH ALL LAWS, ORDINANCES, RULES, REGULATIONS AND LAWFULLY ORDERS OF ANY PUBLIC AUTHORITY REGARDING THE PERFORMANCE OF THE WORK. MECHANICAL AND ELECTRICAL SYSTEMS SHALL BE INSTALLED IN ACCORDANCE WITH ALL APPLICABLE MUNICIPAL AND UTILITY COMPANY SPECIFICATIONS, AND LOCAL AND STATE JURISDICTIONAL CODES, ORDINANCES AND APPLICABLE REGULATIONS.
4. DETAILS ARE INTENDED TO SHOW END RESULTS OF DESIGN. MINOR MODIFICATIONS MAY BE REQUIRED TO SUITE JOB DIMENSIONS OR CONDITIONS, AND SUCH MODIFICATIONS SHALL BE INCLUDED AS PART OF THE WORK.
5. SCALE FOR DRAWINGS IS FOR GENERAL INFORMATION ONLY. LOCATIONS AND DIMENSIONS SHALL BE TAKEN AS SHOWN AND THE DRAWINGS SHALL NOT BE SCALED
6. CONTRACTOR SHALL TAKE ALL NECESSARY SAFETY PRECAUTIONS TO PROTECT UTILITIES, PEDESTRIANS, WORKERS AND VEHICULAR TRAFFIC. THE CONTRACTOR SHALL PROVIDE TEMPORARY FENCES, BARRICADES, ETC. AS REQUIRED TO PROTECT ADJACENT PROPERTY AND THE PUBLIC DURING ALL PHASES OF CONSTRUCTION.



COOL AND GREEN ROOF

FIVE FLAGS CIVIC CENTER
405 MAIN ST.
DUBUQUE, IOWA 52001

PROJECT LOCATION MAP

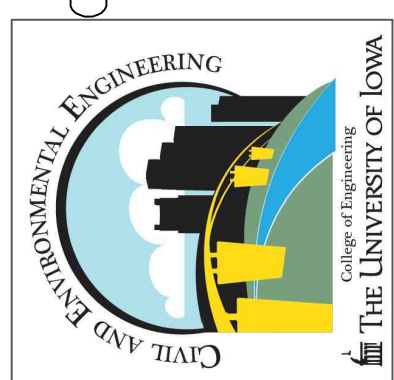


SHEET NO.	INDEX OF SHEETS
1	TITLE SHEET
2	FRAMING PLAN
3	DESING PLAN
4	ROOF TRUSSES
5	TRUSS ELEVATION
6	COLUMN DETAILS
7	TYPICAL DETAILS
8	TYPICAL DETAILS
9	TYPICAL DETAILS

IOWATM
CIVIL & ENVIRONMENTAL
ENGINEERING

PROJECT: CEE: 4850
DATE: 05/10/2024
DRAWN BY: SB/GDE
REVISION:

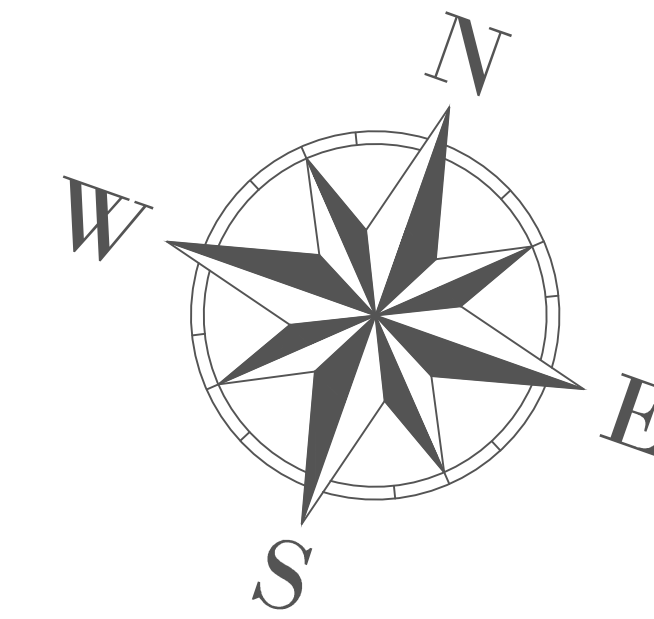
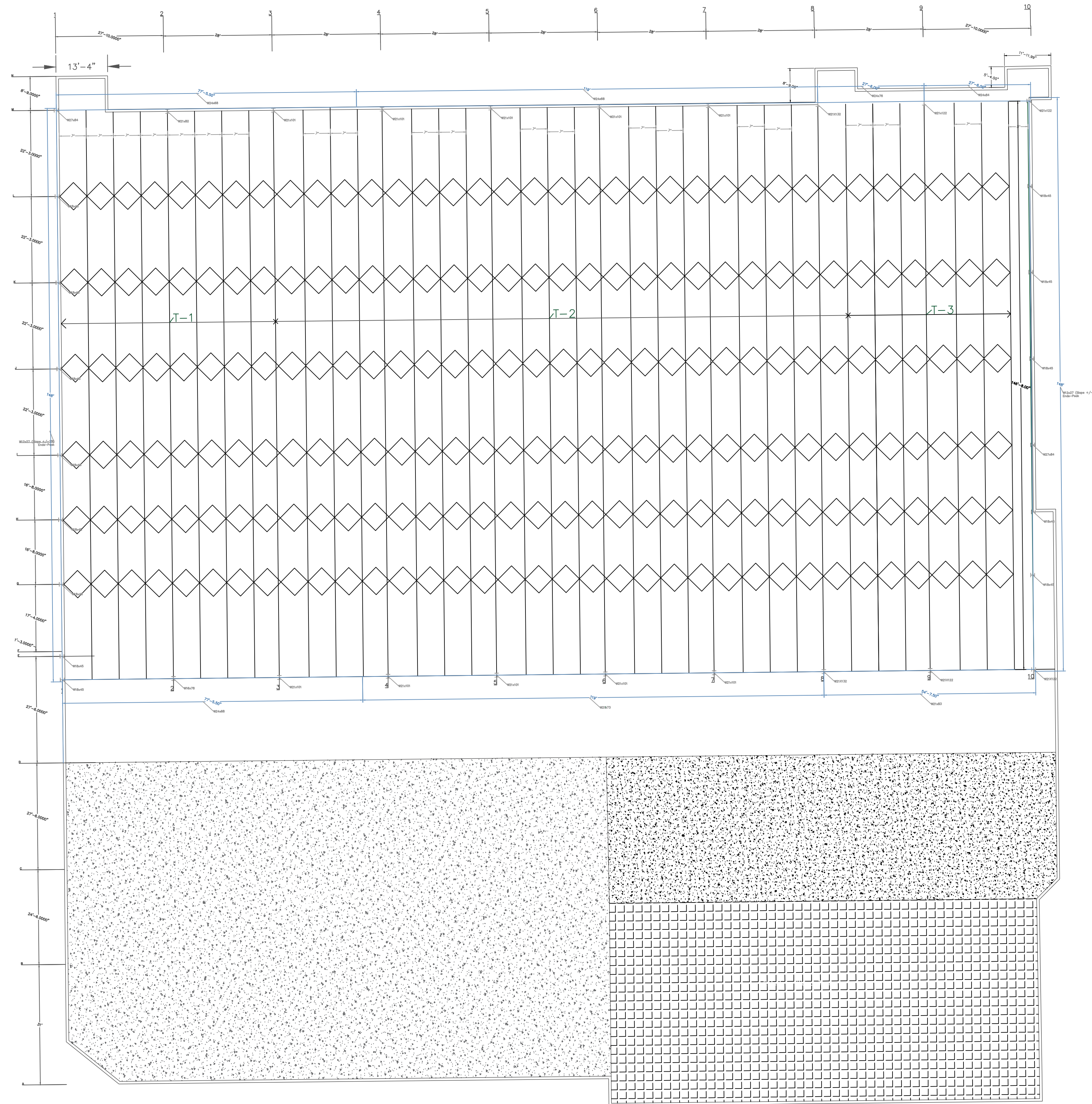
THE UNIVERSITY OF IOWA
CIVIL AND ENVIRONMENTAL ENGINEERING
4105 SEAMANS CENTER FOR THE
ENGINEERING ARTS AND SCIENCES
103 S CAPITOL ST
IOWA CITY, IOWA 52242
PHONE: 319.335.5647
FAX: 319.335.5660
EMAIL: civil-hawks@iowa.edu



EDUCATIONAL - NOT FOR CONSTRUCTION

COOL & GREEN ROOF
405 MAIN ST.
DUBUQUE, IA 52001

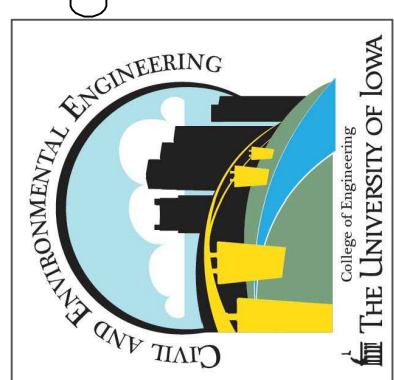
SHEET NAME
TITLE SHEET
SHEET NO.
01



NOTE:
 ADDITIONAL LOADS DUE TO TEMPORARY RIGGING FOR
 SPECIAL EVENTS MAY BE PLACED AS FOLLOWS:
 THREE LOADS ON EACH TRUSS OF 2000LBS EACH
 PLACED NEAR THE TOP CHORD PANEL POINTS
 EXCEPT ON TRUSSES MARKET BY ♦ SHALL BE
 LIMITED TO ONE SUCH LOAD OF 2000 LBS.

PROJECT: CEE: 4850
 DATE: 05/10/2024
 DRAWN BY: SB/GDE
 REVISION:

THE UNIVERSITY OF IOWA
 CIVIL AND ENVIRONMENTAL ENGINEERING
 4105 SEAMANS CENTER FOR THE
 ENGINEERING ARTS AND SCIENCES
 103 S CAPITOL ST
 IOWA CITY, IOWA 52242
 PHONE: 319.335.5647
 FAX: 319.335.5660
 EMAIL: civil-hawks@iowa.edu

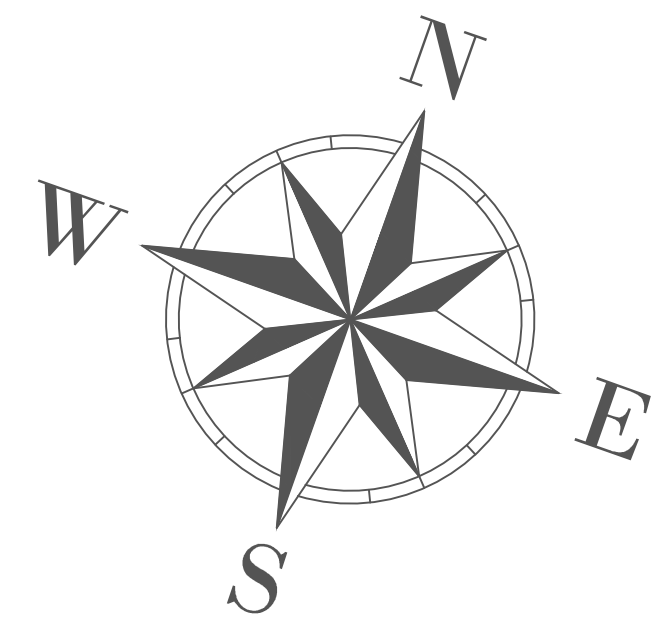
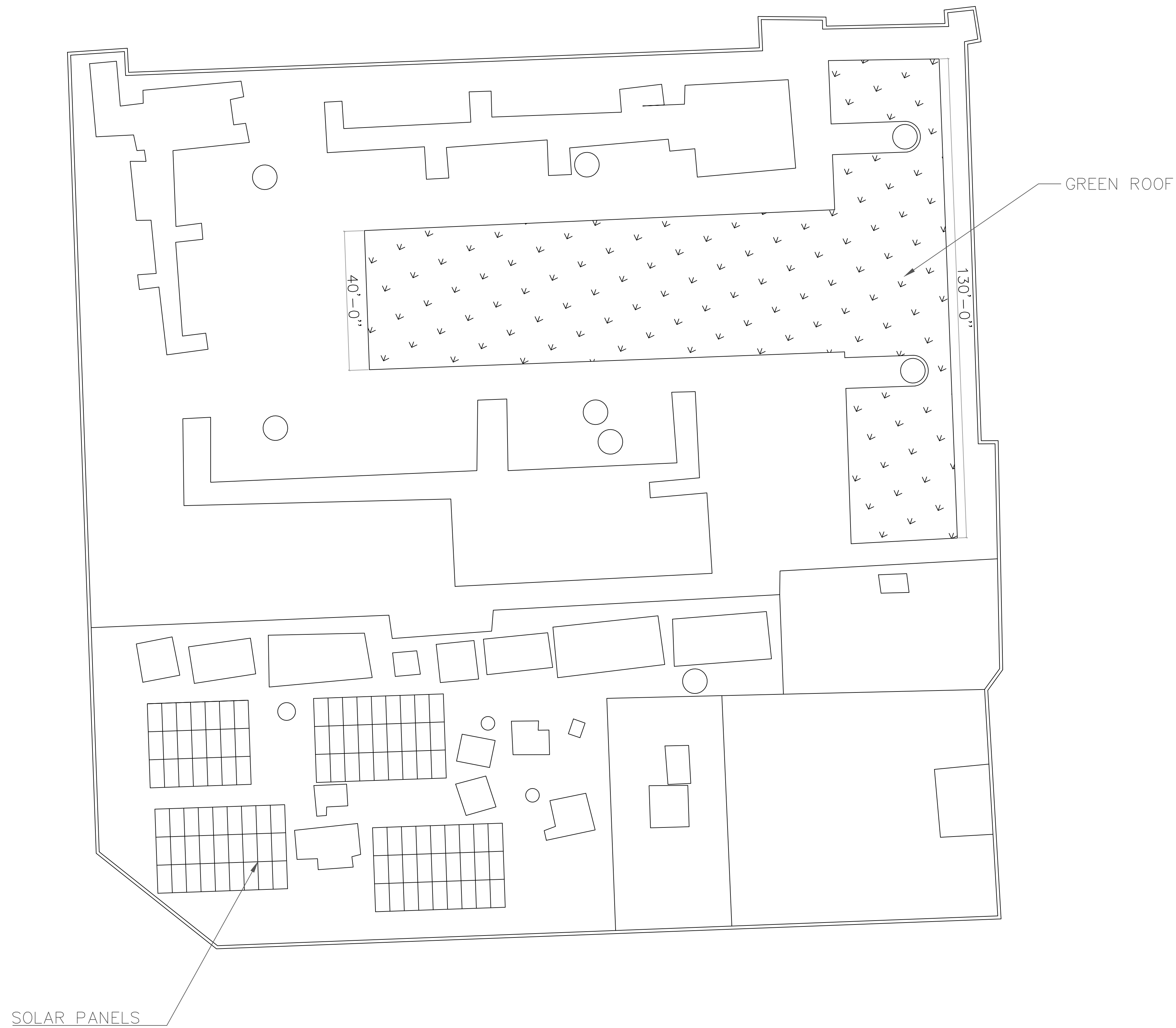


EDUCATIONAL - NOT
 FOR CONSTRUCTION

COOL & GREEN ROOF
 405 MAIN ST.
 DUBUQUE, IA 52001

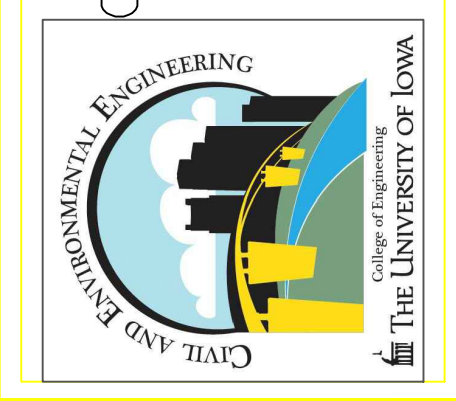
SHEET NAME
 FRAMING PLAN

SHEET NO.
 S2



PROJECT:	CEE: 4850
DATE :	05/10/2024
DRAWN BY:	SB/GDE
REVISION:	

THE UNIVERSITY OF IOWA
 CIVIL AND ENVIRONMENTAL ENGINEERING
 4105 SEAMANS CENTER FOR THE
 ENGINEERING ARTS AND SCIENCES
 103 S CAPITOL ST
 IOWA CITY, IOWA 52242
 PHONE: 319.335.5647
 FAX: 319.335.5660
 EMAIL: civil-hawks@iowa.edu

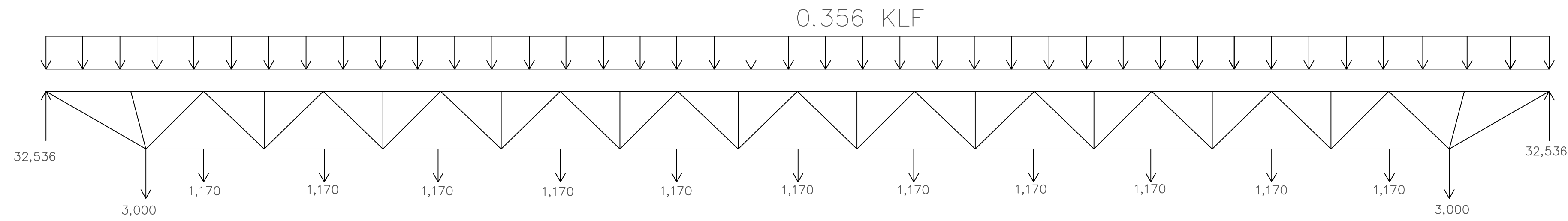


EDUCATIONAL - NOT
 FOR CONSTRUCTION

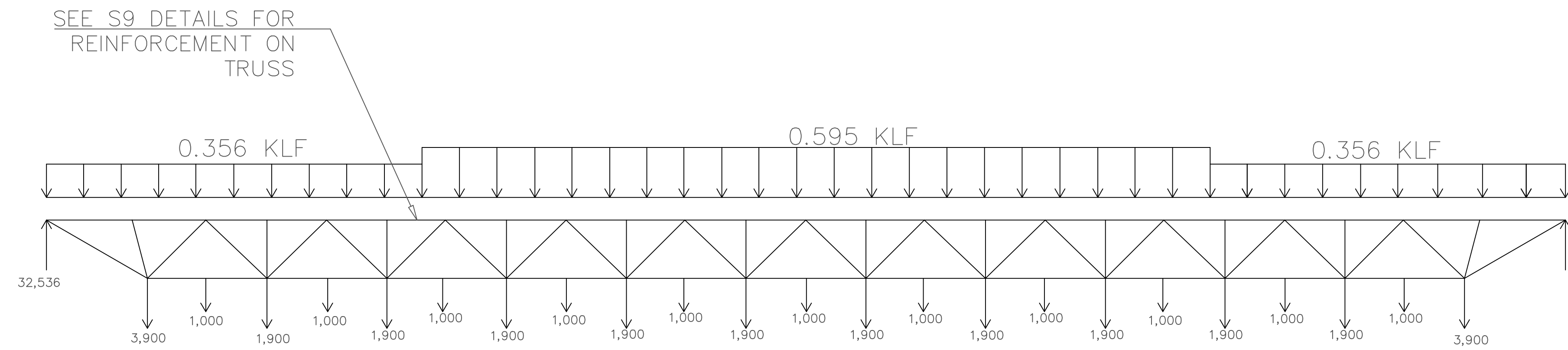
COOL & GREEN ROOF

405 MAIN ST.
 DUBUQUE, IA 52001

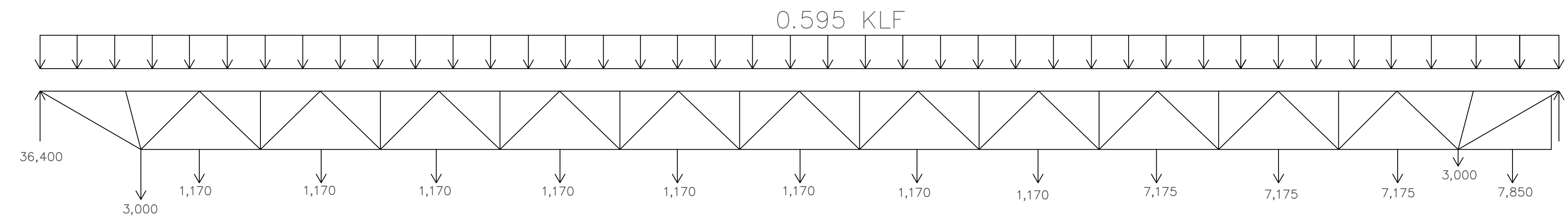
SHEET NAME	DESIGN PLAN
SHEET NO.	S3



9 TRUSS T-1 LOADING DIAGRAM
S4 SCALE



10 TRUSS T-2 LOADING DIAGRAM
S4 SCALE



11 TRUSS T-3 LOADING DIAGRAM
S4 SCALE

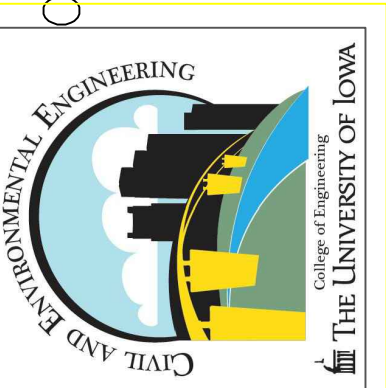
TRUSSES	
T-1	2L5X5X $\frac{1}{2}$
T-2	2L5X5X $\frac{1}{2}$ - REIN
T-3	2L6X6X $\frac{7}{8}$

TRUSS NOTES:

1. TRUSSES SHALL BE DESIGNED AND FABRICATED AS DLH STEEL JOISTS, USING AISC SPECIFICATION FOR STRUCTURAL STEEL BUILDINGS, STANDARDS, & ACCESSORIES
2. FURNISH ALL DESIGN CALCULATIONS INCLUDING DEFLECTIONS FOR REVIEW WITH SHOP DRAWINGS
3. BOT CHORDS SHALL BE DESIGNED FOR BENDING OF POINT LOADS APPLIED AT MID-PANELS AS SHOWN IN LOADING DIAGRAMS

PROJECT:	CEE: 4850
DATE :	05/10/2024
DRAWN BY:	SB/GDE
REVISION:	

THE UNIVERSITY OF IOWA
CIVIL AND ENVIRONMENTAL ENGINEERING
4105 SEAMANS CENTER FOR THE
ENGINEERING ARTS AND SCIENCES
103 S CAPITOL ST
IOWA CITY, IOWA 52242
PHONE: 319.335.5647
FAX: 319.335.5660
EMAIL: civil-hawks@iowa.edu



EDUCATIONAL - NOT FOR CONSTRUCTION

COOL & GREEN ROOF

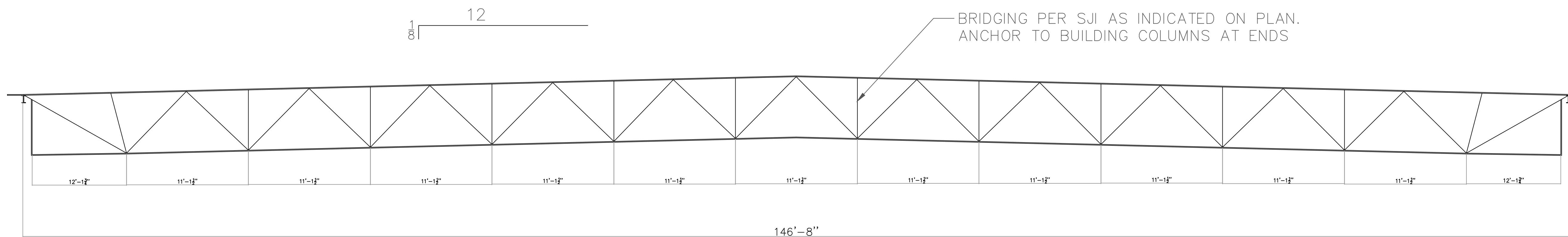
405 MAIN ST.
DUBUQUE, IA 52001

SHEET NAME

TRUSSES DETAILS

SHEET NO.

S4



11 ROOF TRUSS ELEVATION
S5 SCALE

PROJECT:	CEE: 4850
DATE :	05/10/2024
DRAWN BY:	SB/GDE
REVISION:	

THE UNIVERSITY OF IOWA
 CIVIL AND ENVIRONMENTAL ENGINEERING
 4105 SEAMANS CENTER FOR THE
 ENGINEERING ARTS AND SCIENCES
 103 S CAPITOL ST
 IOWA CITY, IOWA 52242
 PHONE: 319.335.5647
 FAX: 319.335.5660
 EMAIL: civil-hawks@iowa.edu

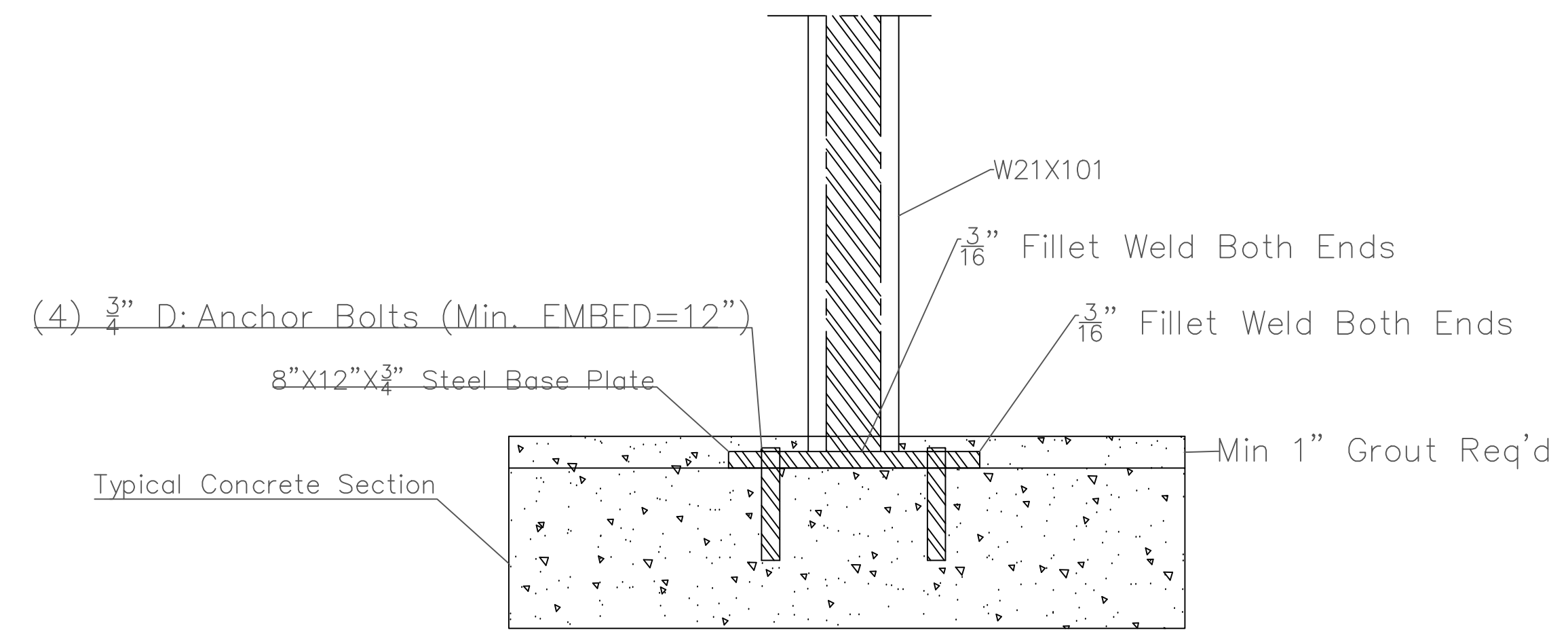
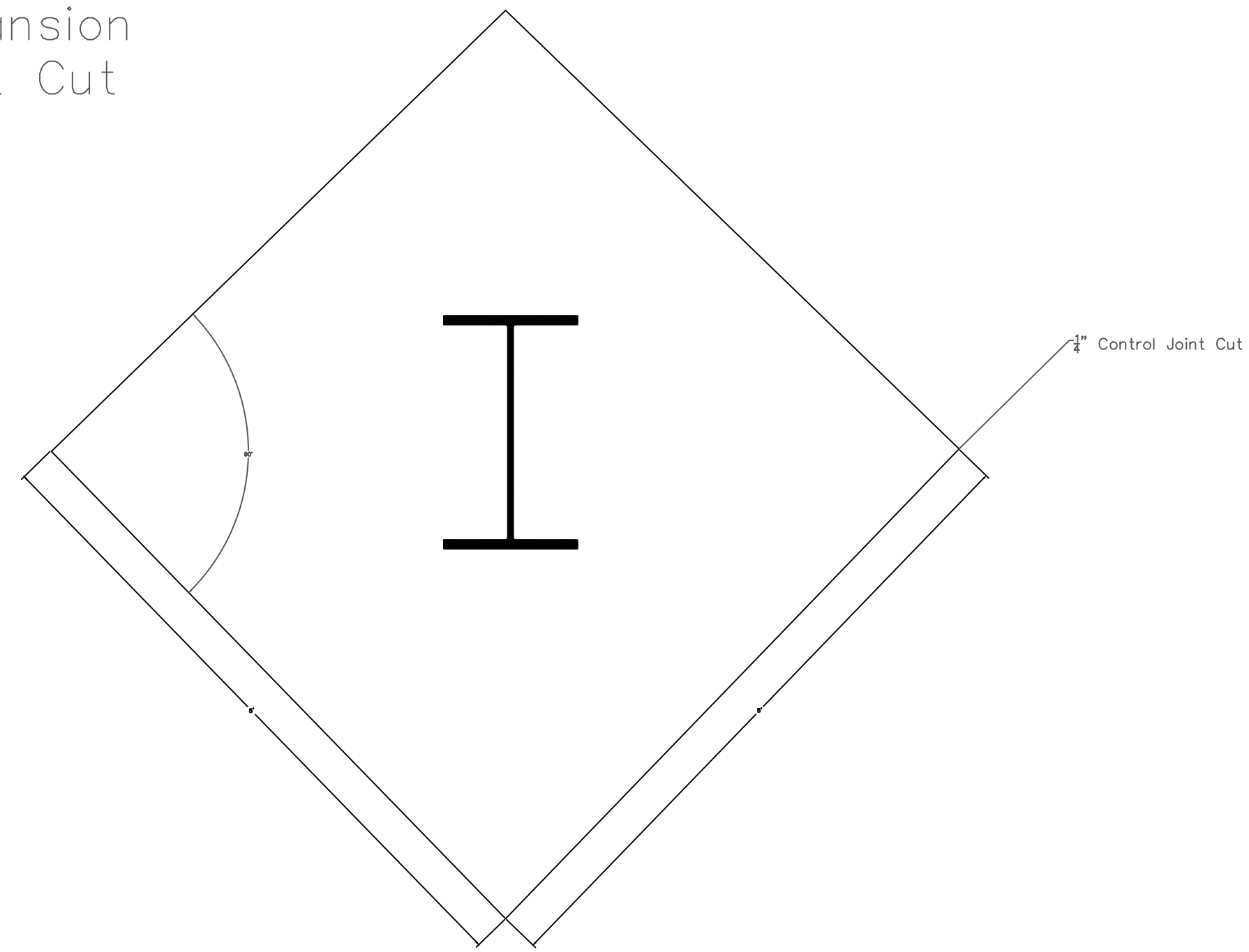


EDUCATIONAL - NOT FOR CONSTRUCTION

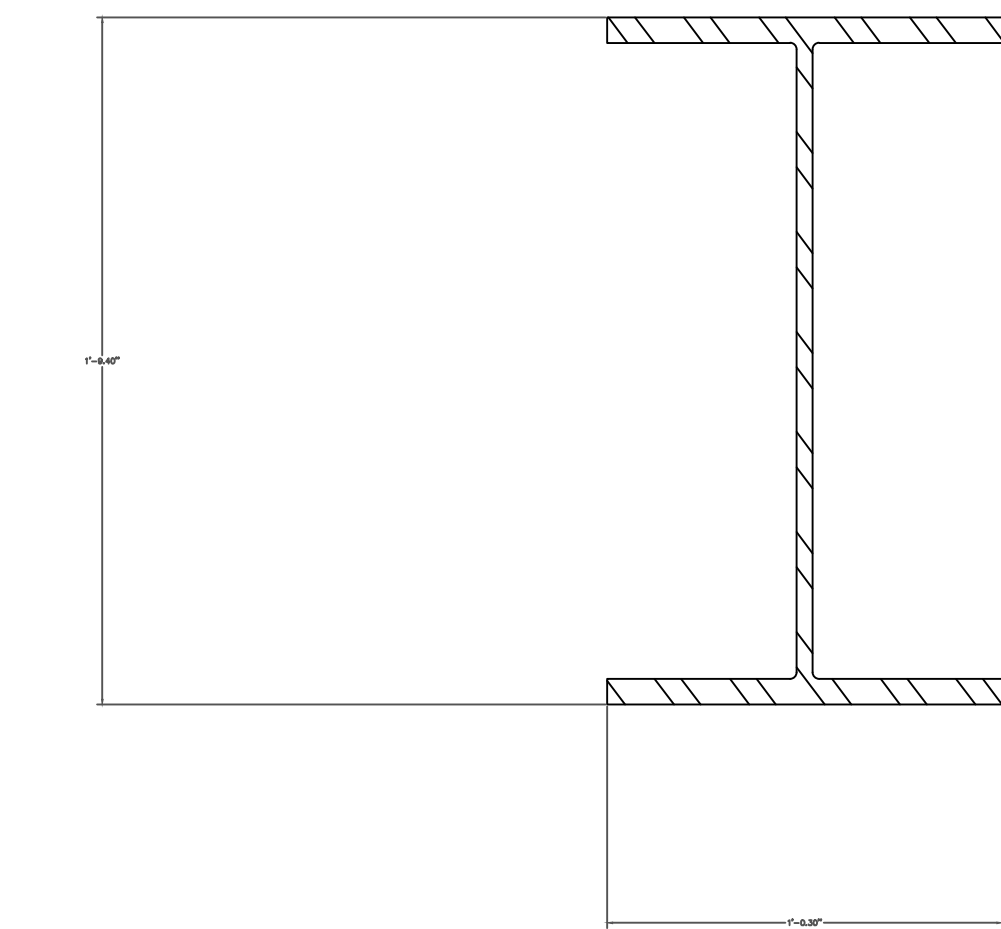
COOL & GREEN ROOF
 405 MAIN ST.
 DUBUQUE, IA 52001

SHEET NAME	TRUSSES DETAILS
SHEET NO.	S5

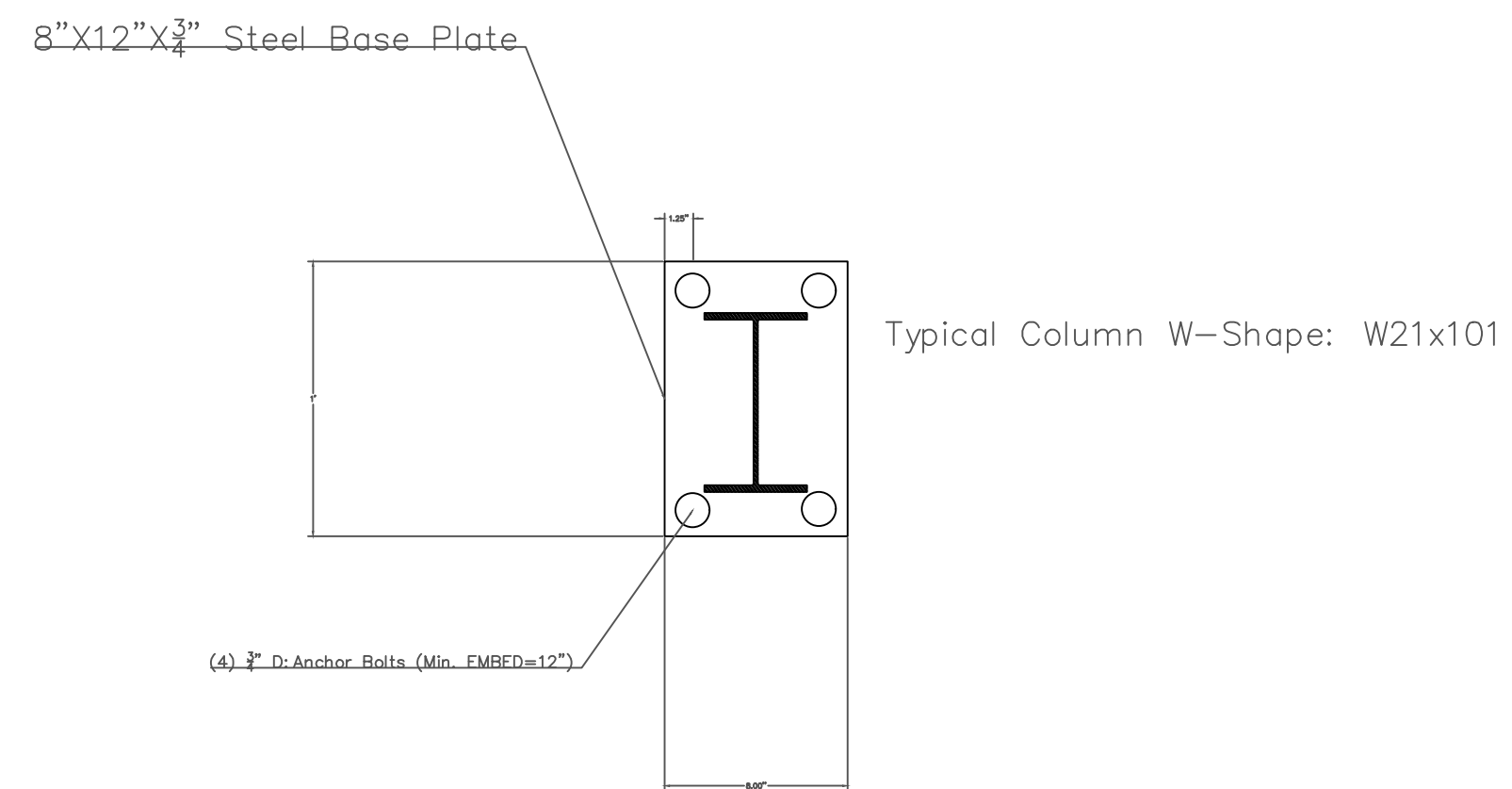
Column Expansion
Control Joint Cut



Column
Slab-on-ground
detail



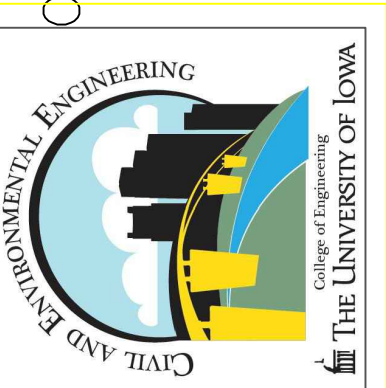
Typical Column W-Shape: W21x101



Column Plate Detail

PROJECT:	CEE: 4850
DATE :	05/10/2024
DRAWN BY:	SB/GDE
REVISION:	

THE UNIVERSITY OF IOWA
CIVIL AND ENVIRONMENTAL ENGINEERING
4105 SEAMANS CENTER FOR THE
ENGINEERING ARTS AND SCIENCES
103 S CAPITOL ST
IOWA CITY, IOWA 52242
PHONE: 319.335.5647
FAX: 319.335.5660
EMAIL: civil-hawks@iowa.edu



EDUCATIONAL - NOT
FOR CONSTRUCTION

COOL & GREEN ROOF

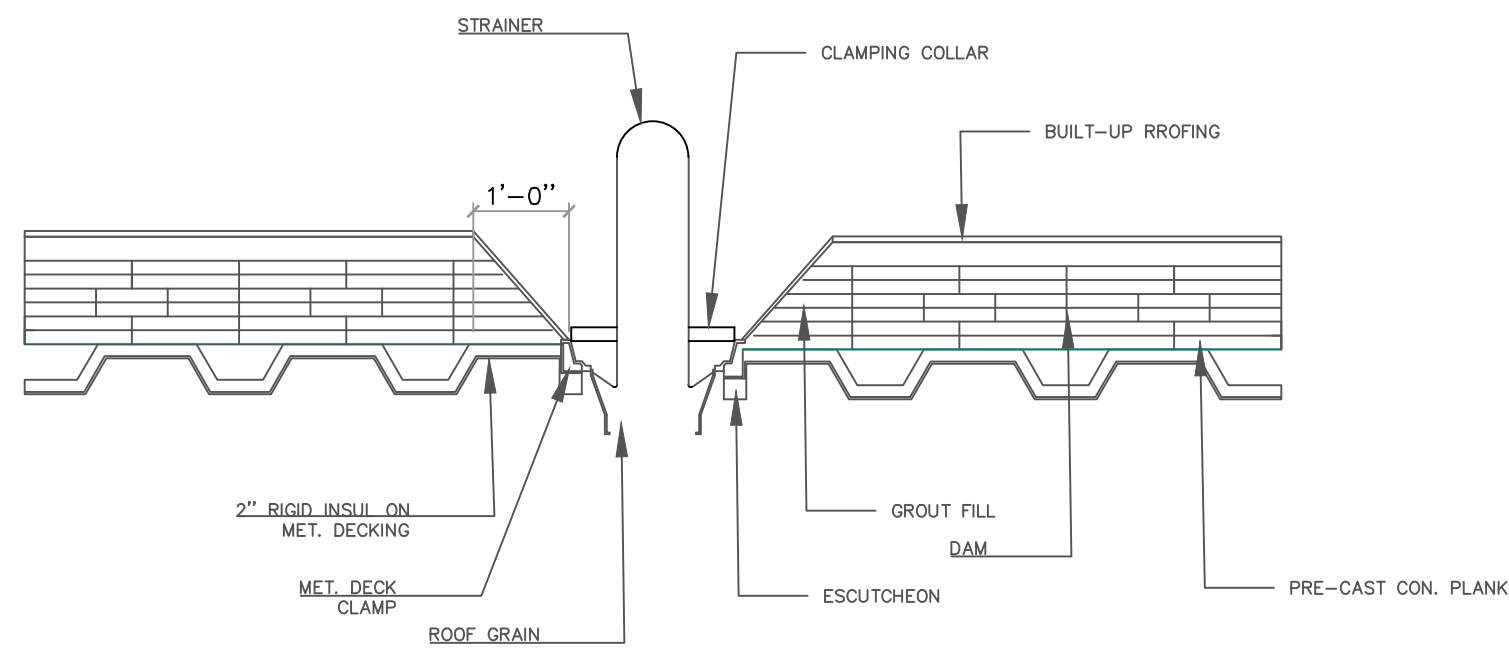
405 MAIN ST.
DUBUQUE, IA 52001

SHEET NAME

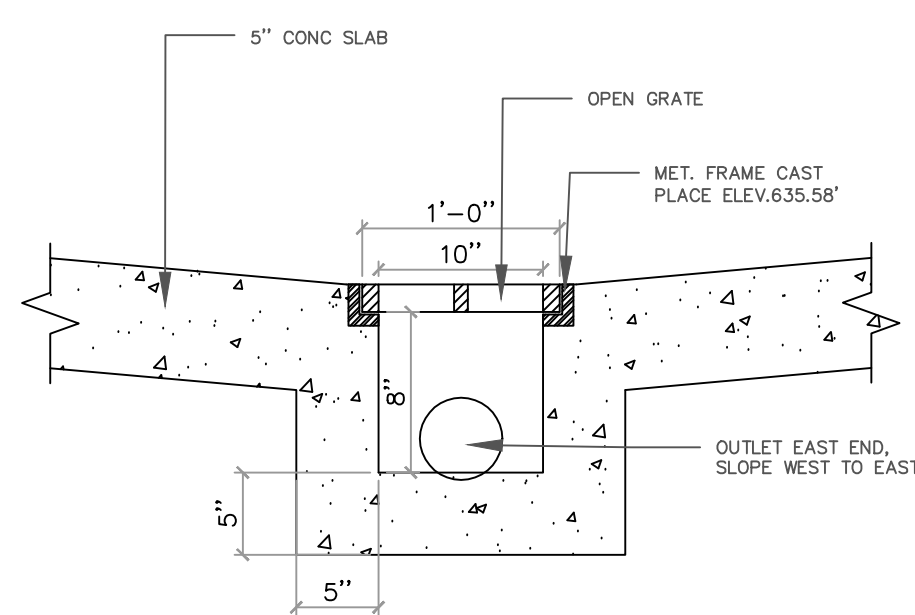
COLUMN DETAILS

SHEET NO.

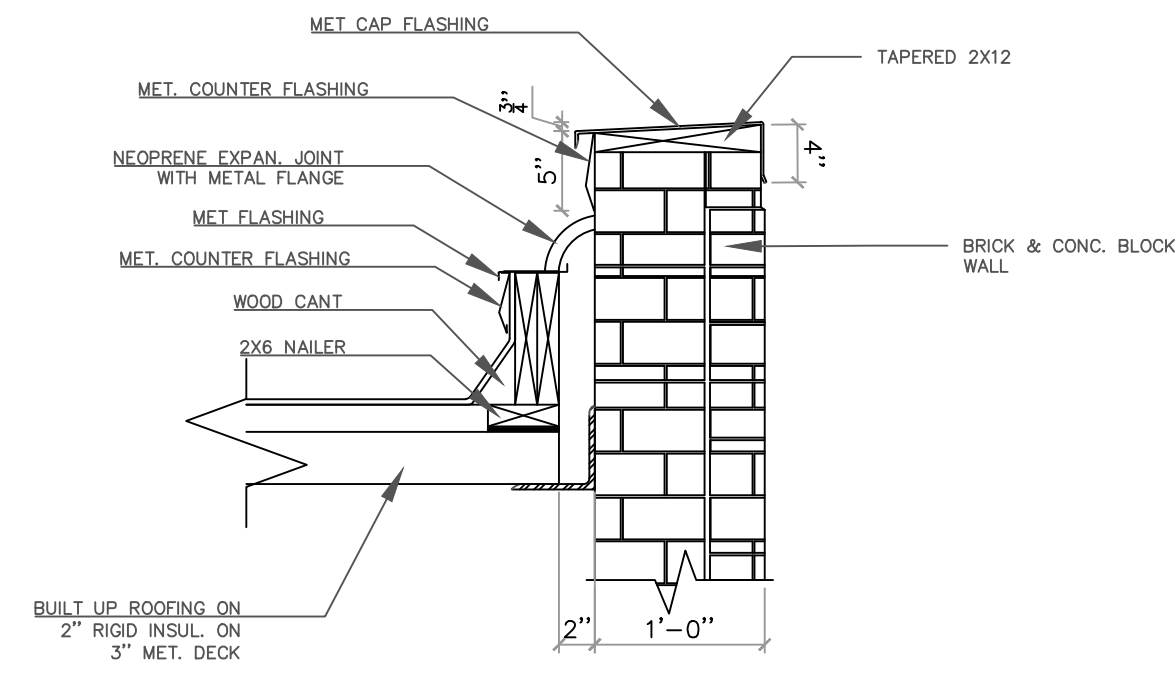
56



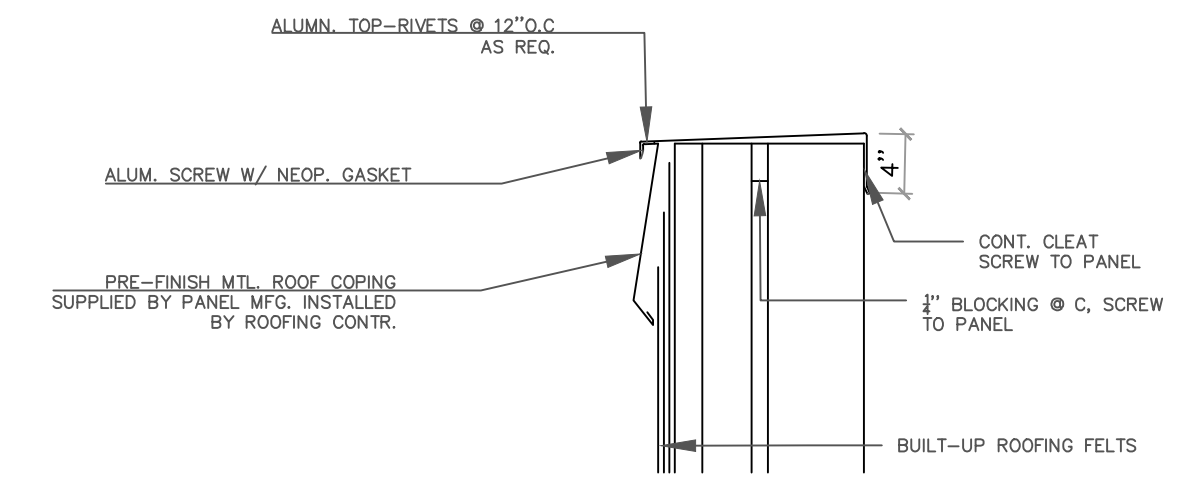
1 ROOF DRAIN DETAIL
S7 SCALE



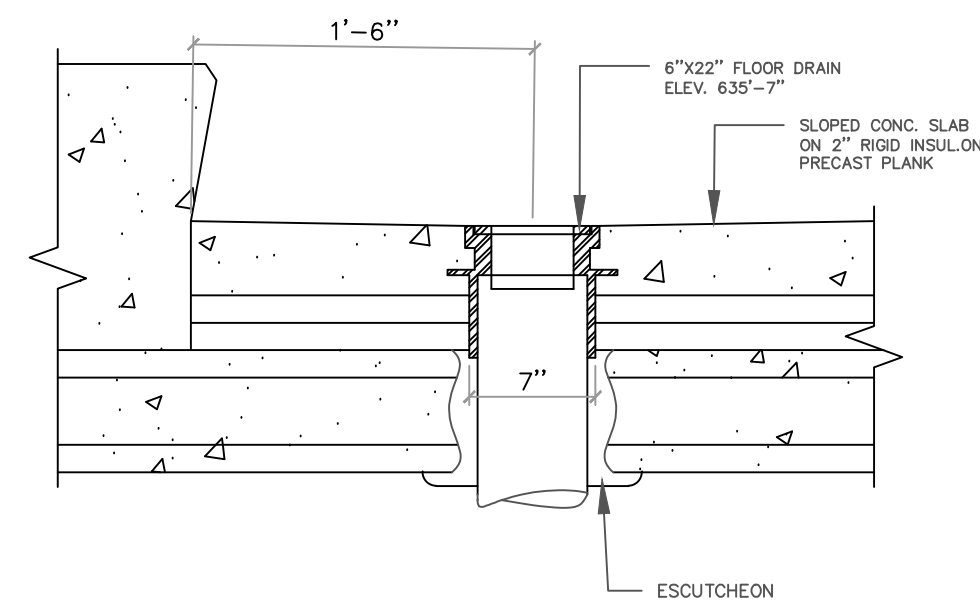
2 TRENCH DRAIN
S7 SCALE



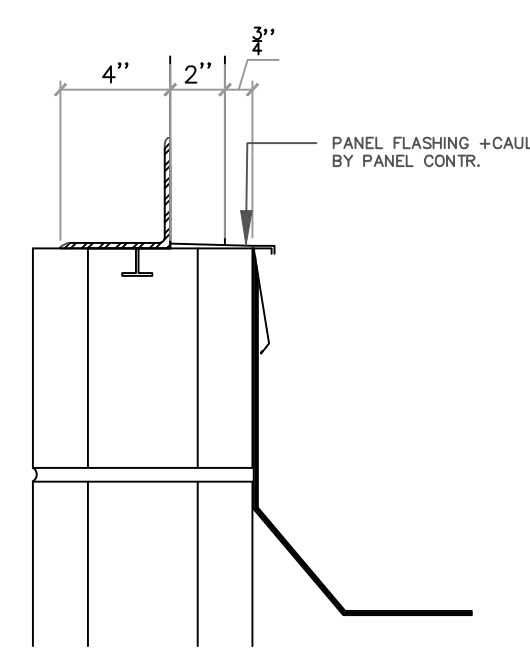
3 EXPANSION JOINT & FLASHING
S7 SCALE



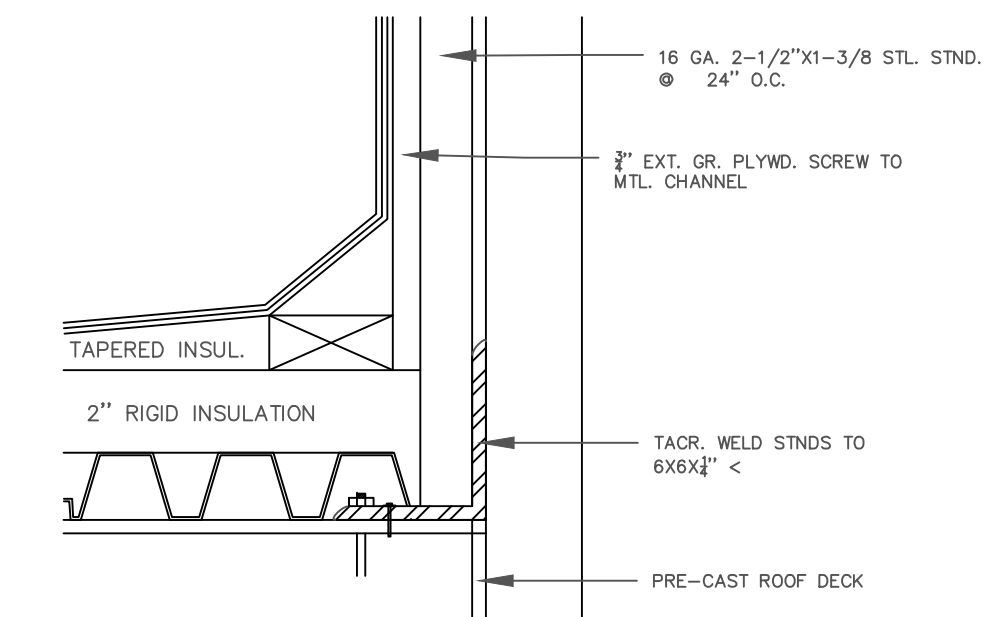
10 COPING DETL. @ MTL PANEL
S7 SCALE



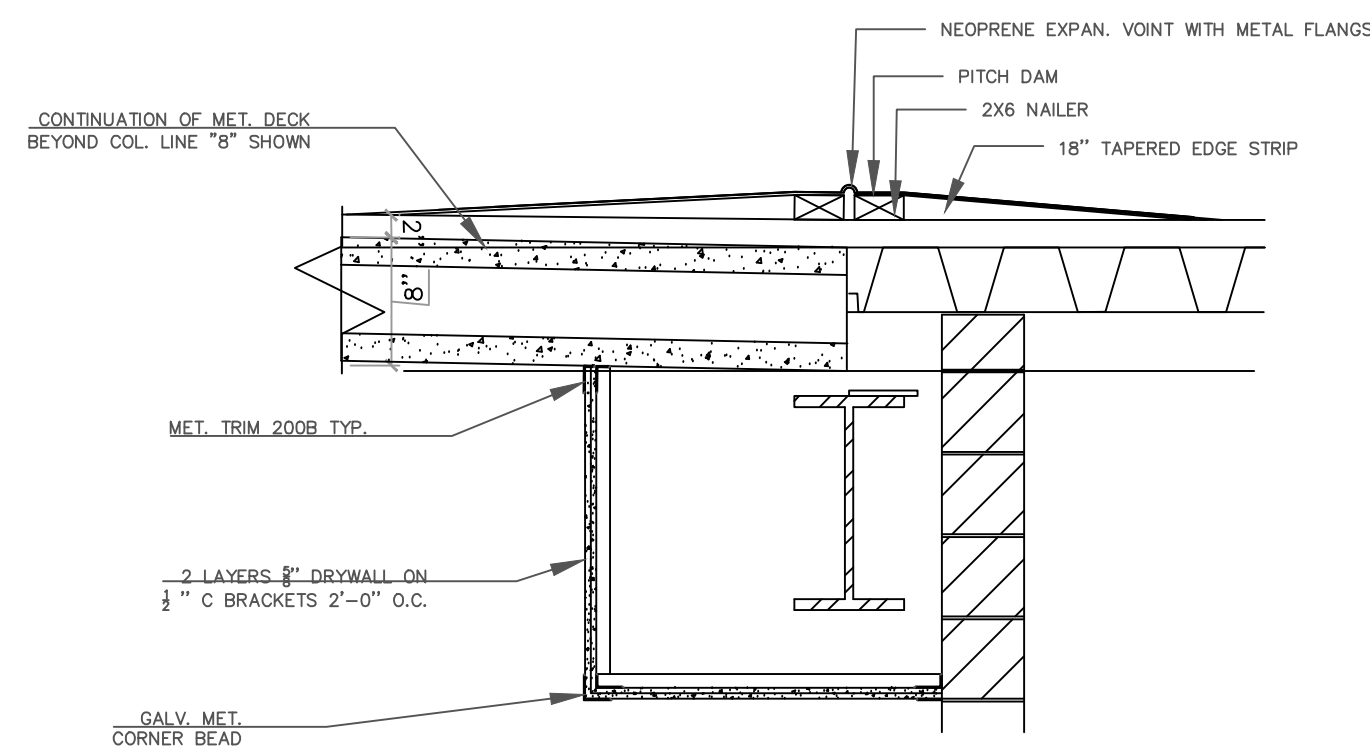
4 FLOOR DRAIN
S7 SCALE



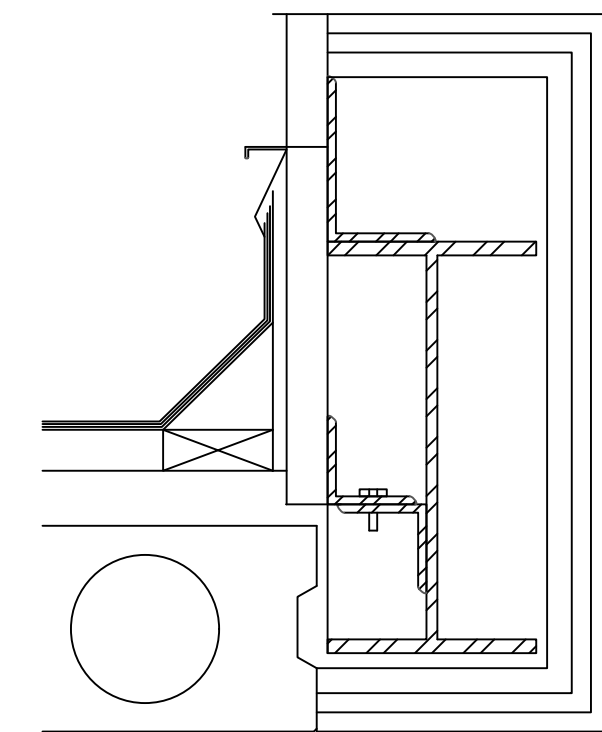
5 ROOF EDGE
S7 SCALE



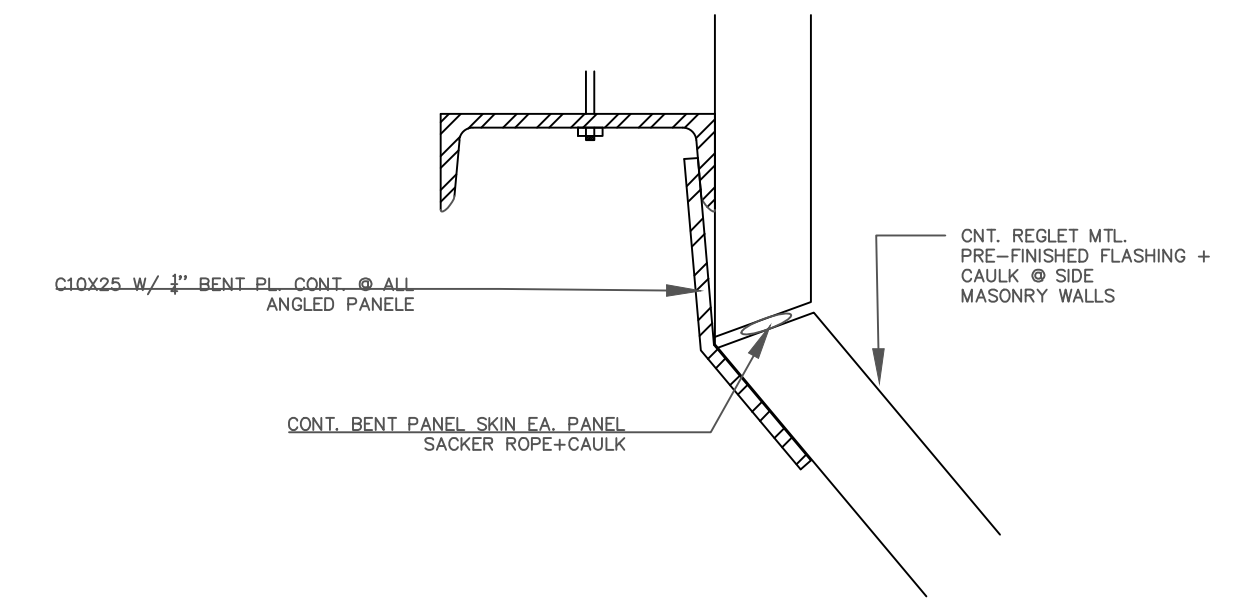
11 ROOF EDGE
S7 SCALE



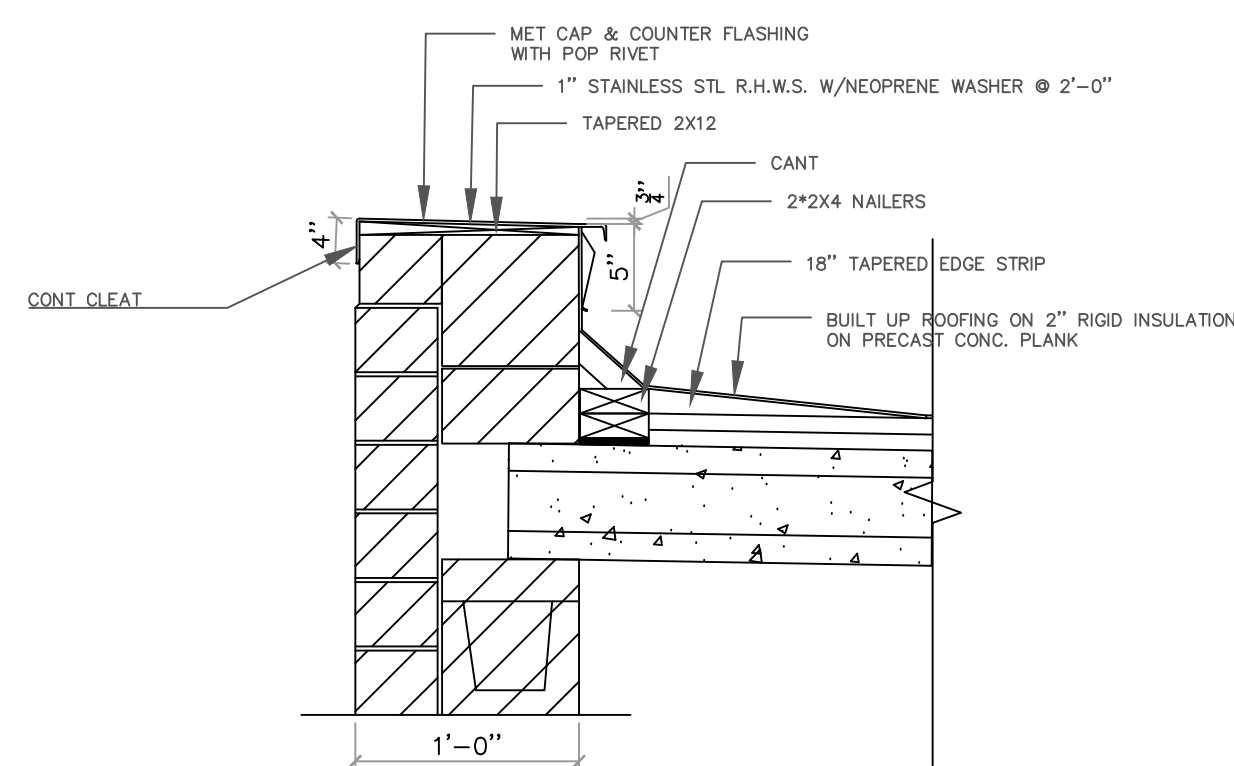
6 EXPANSION JOINT
S7 SCALE



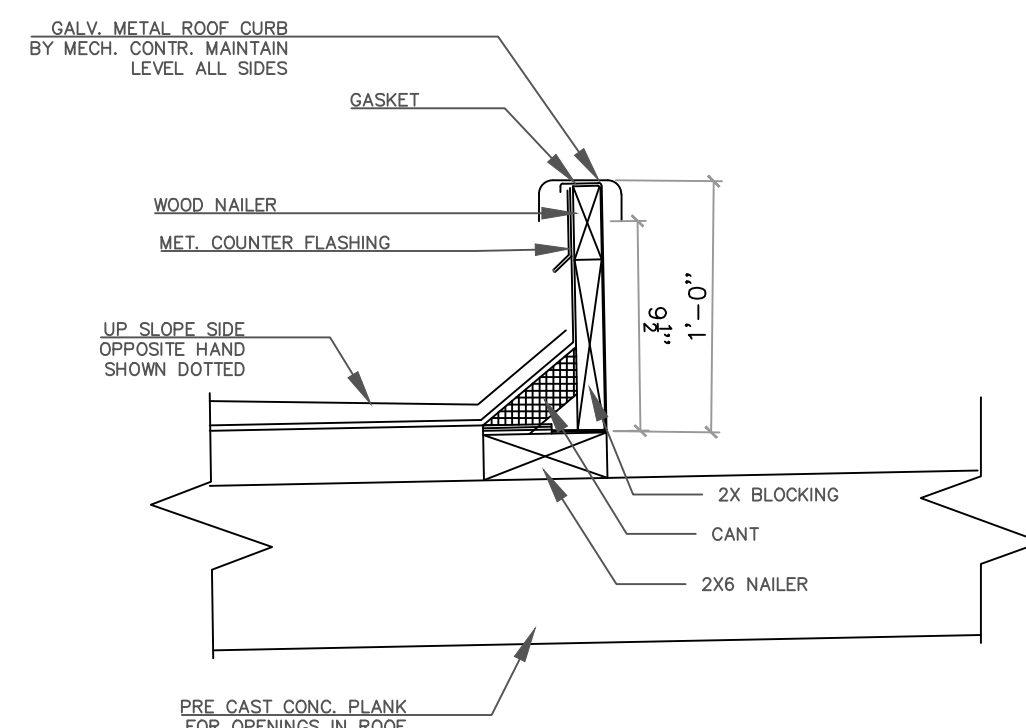
7 ROOF EDGE
S7 SCALE



12 BENT PANEL
S7 SCALE



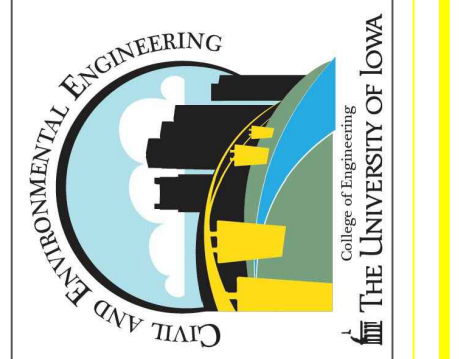
8 FLASHING DETAIL
S7 SCALE



9 MECHANICAL EQUIP. CURB
S7 SCALE

PROJECT: CEE: 4850
DATE: 05/10/2024
DRAWN BY: SB/GDE
REVISION:

THE UNIVERSITY OF IOWA
CIVIL AND ENVIRONMENTAL ENGINEERING
4105 SEAMANS CENTER FOR THE
ENGINEERING ARTS AND SCIENCES
103 S CAPITOL ST
IOWA CITY, IOWA 52242
PHONE: 319.335.5647
FAX: 319.335.5660
EMAIL: civil-hawks@iowa.edu

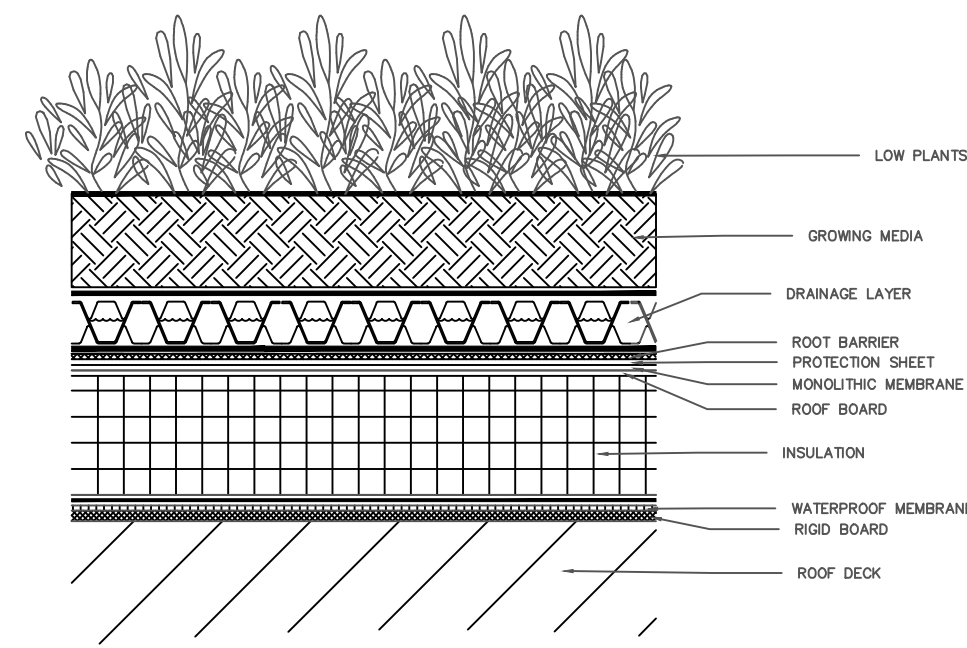


EDUCATIONAL - NOT FOR CONSTRUCTION

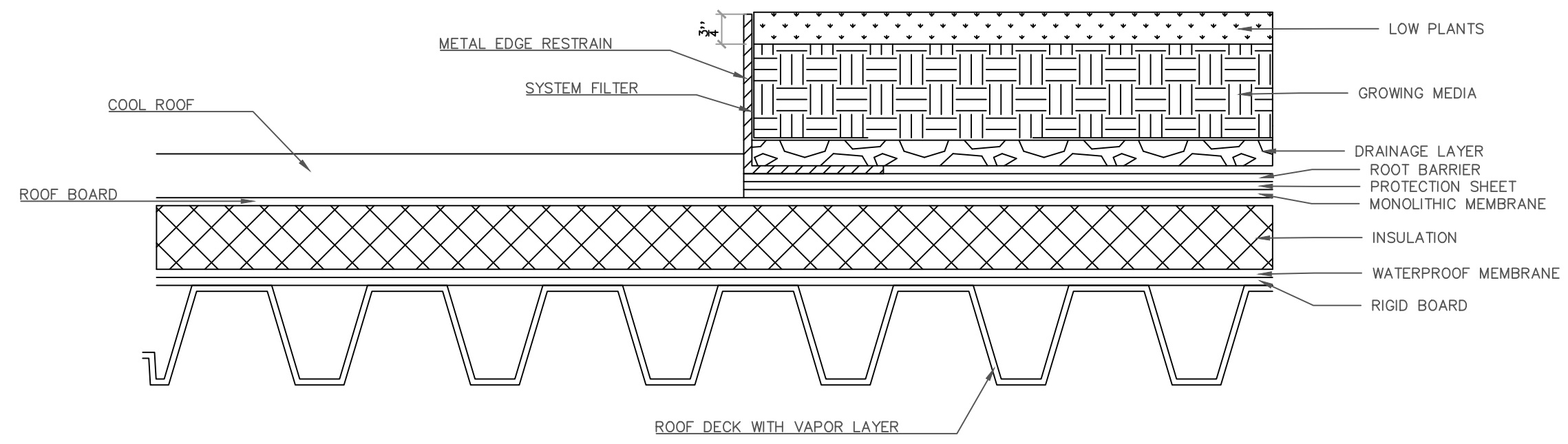
COOL & GREEN ROOF
405 MAIN ST.
DUBUQUE, IA

SHEET NAME
ROOF DETAILS

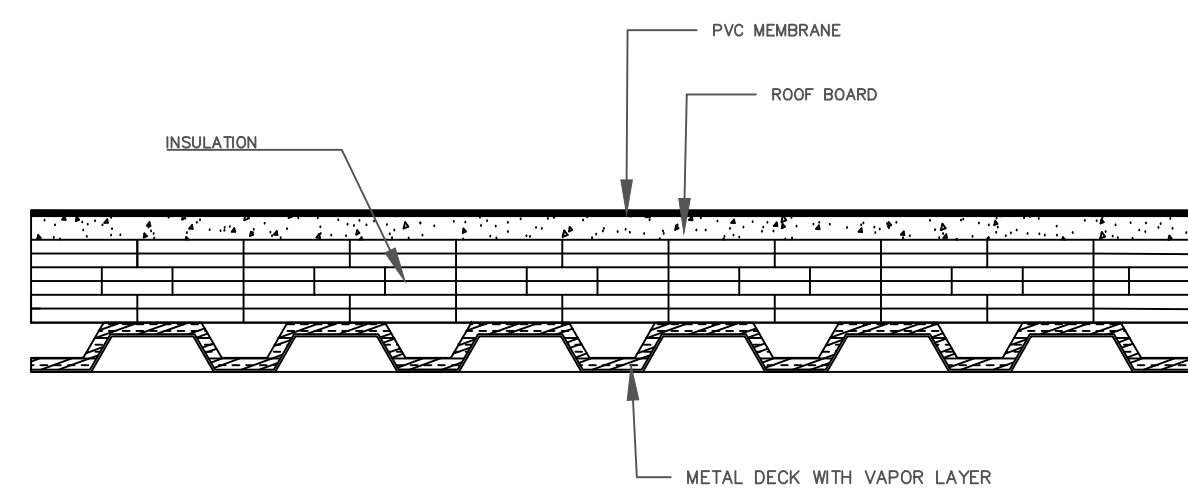
SHEET NO.
S7



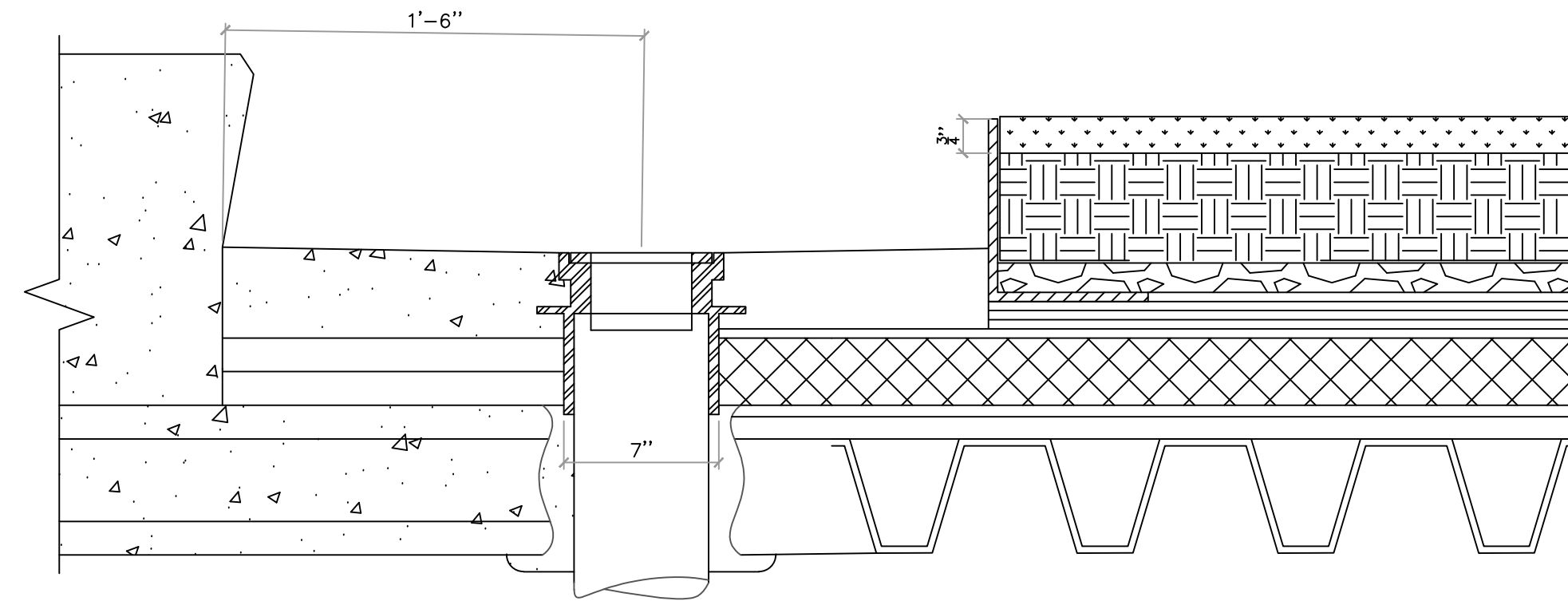
1 GREEN ROOF CROSS SECTION
S8 SCALE



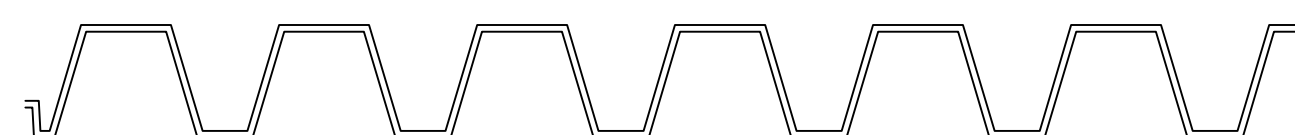
2 GREEN ROOF TRANSITION
S8 SCALE



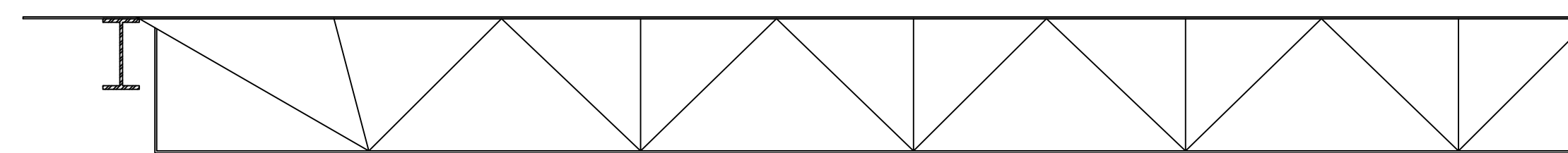
3 COOL ROOF CROSS-SECTION
S8 SCALE



5 ROOF DRAINAGE SECTION
S8 SCALE



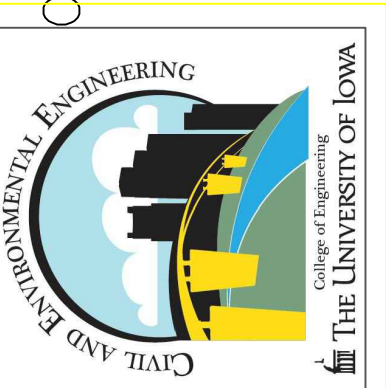
4 ROOF DECK-SECTION
S8 SCALE



6 GIRDER TO TRUSS DETAIL
S8 SCALE

PROJECT:	CEE: 4850
DATE :	05/10/2024
DRAWN BY:	SB/GDE
REVISION:	

THE UNIVERSITY OF IOWA
CIVIL AND ENVIRONMENTAL ENGINEERING
4105 SEAMANS CENTER FOR THE
ENGINEERING ARTS AND SCIENCES
103 S CAPITOL ST
IOWA CITY, IOWA 52242
PHONE: 319.335.5647
FAX: 319.335.5660
EMAIL: civil-hawks@iowa.edu



EDUCATIONAL - NOT FOR CONSTRUCTION

COOL & GREEN ROOF

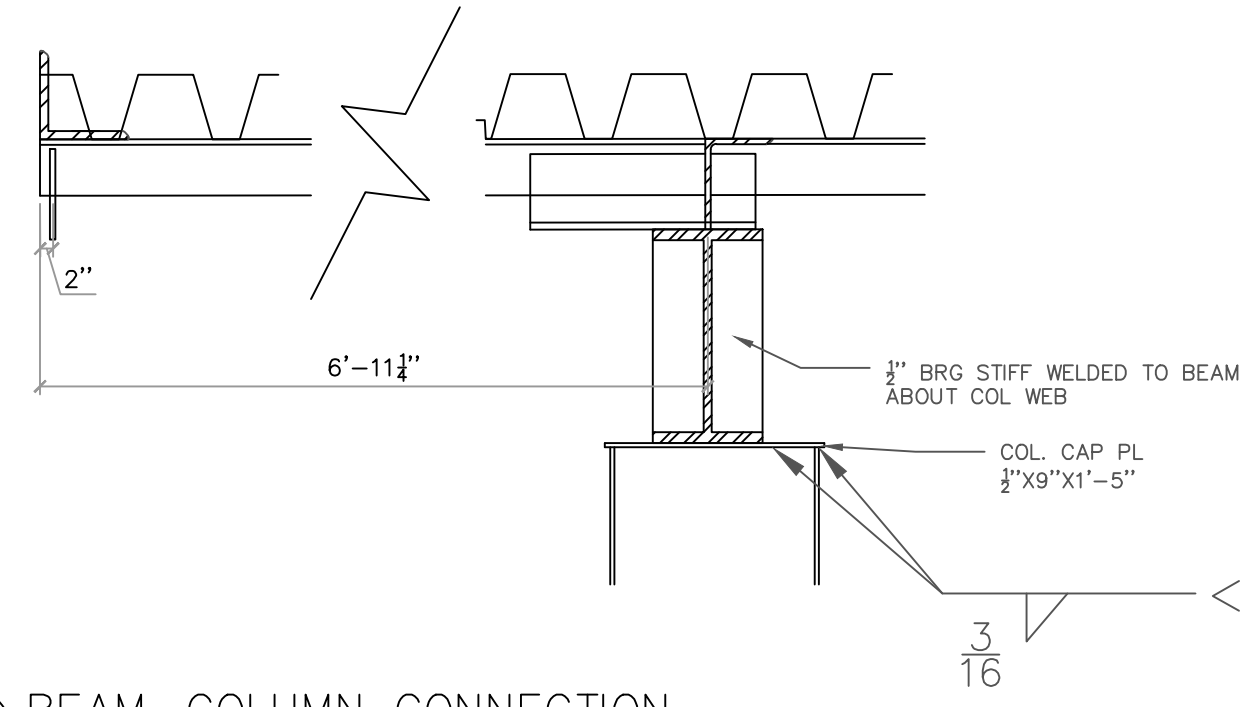
405 MAIN ST.
DUBUQUE, IA 52001

SHEET NAME

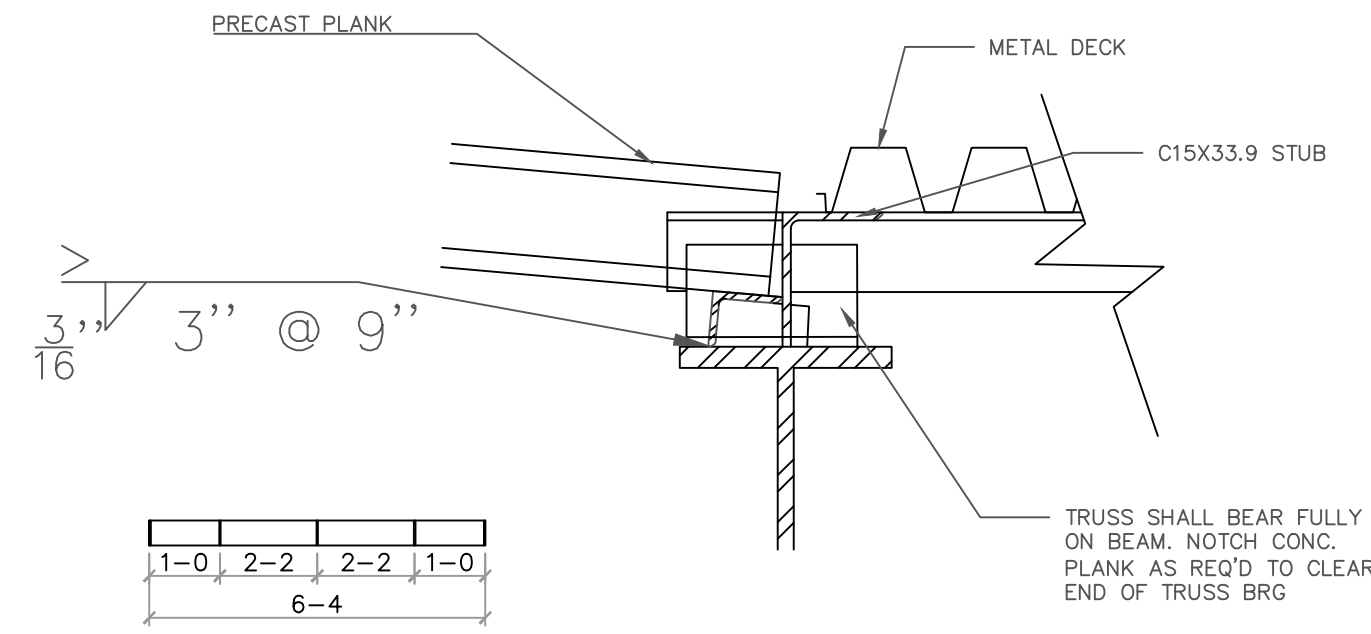
ROOF DETAILS

SHEET NO.

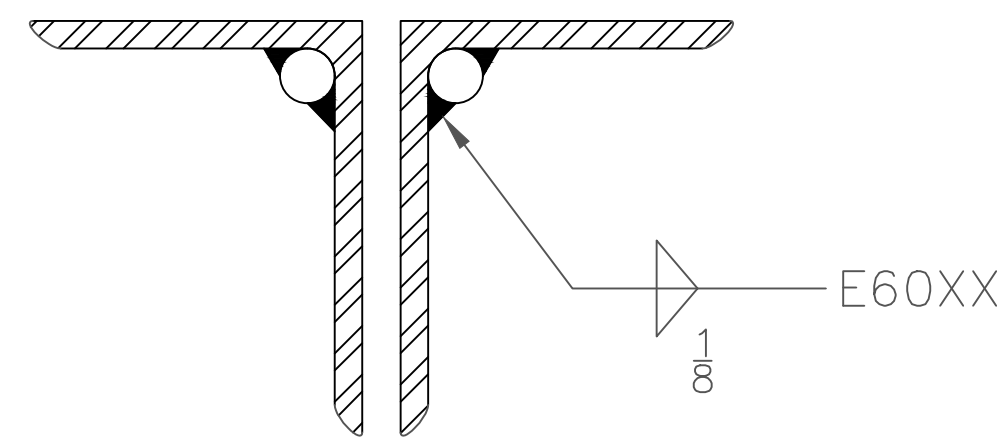
S8



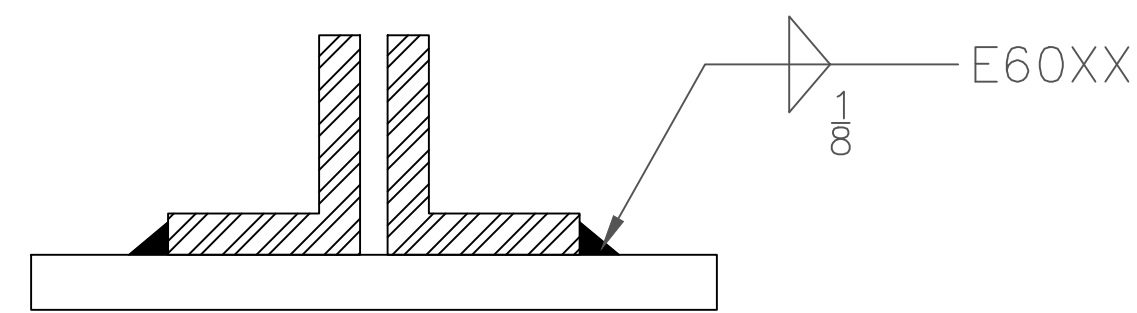
1 BEAM-COLUMN CONNECTION
S9 SCALE



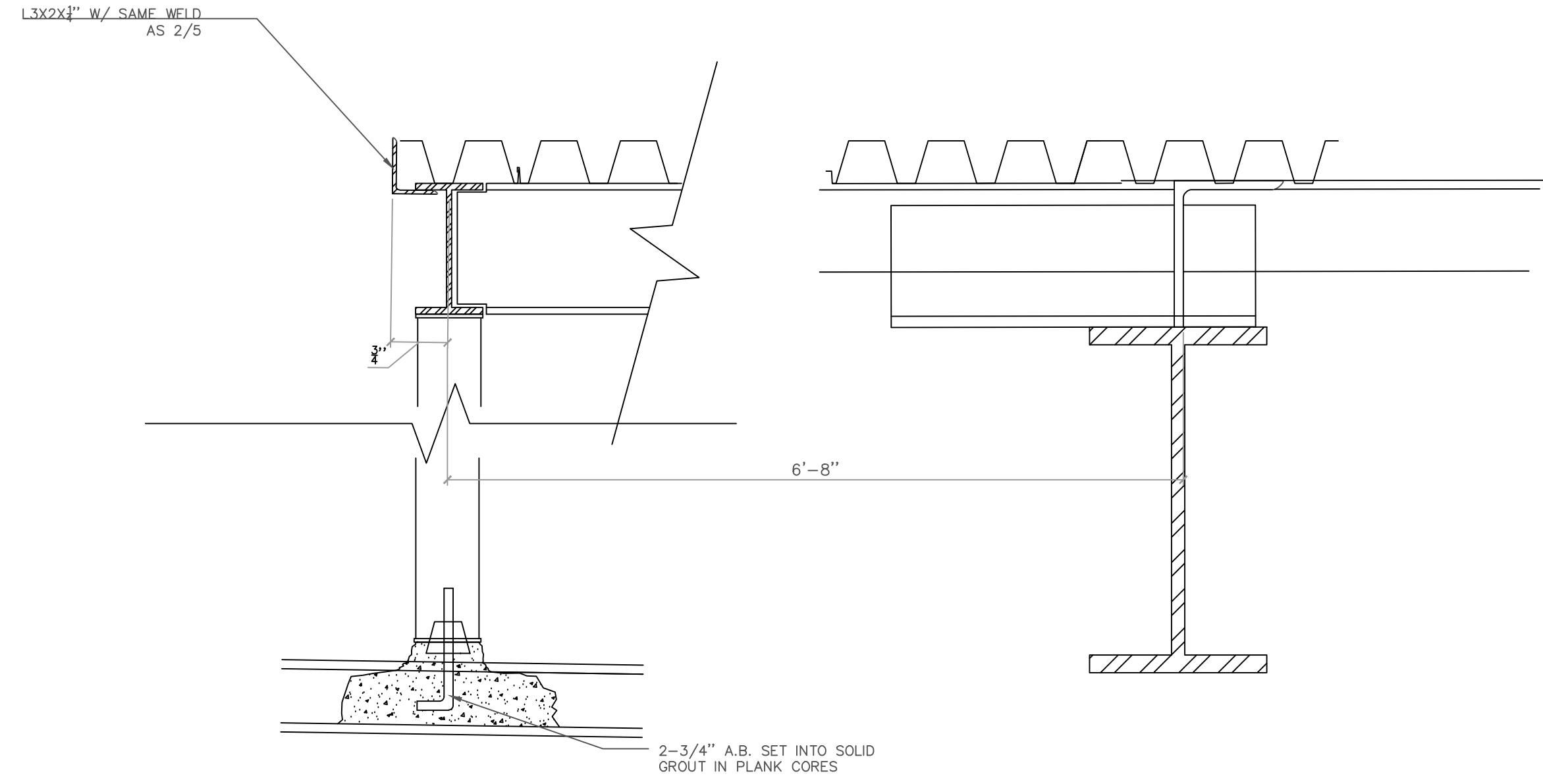
2 PRECAST PLANK-STEEL TRUSS BRG DETAIL
S9 SCALE



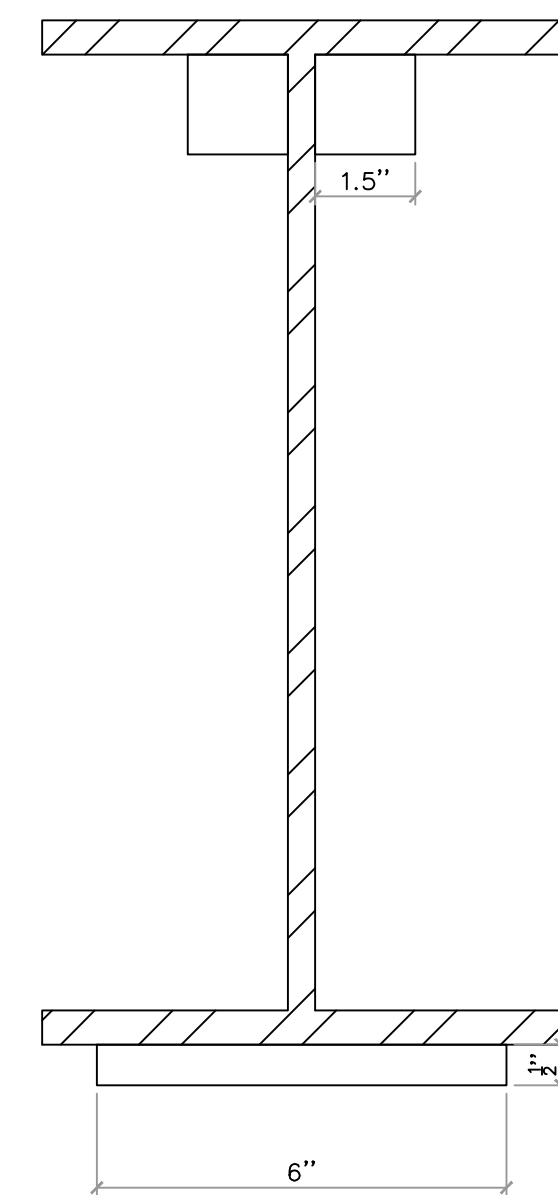
3 REINFORCEMENT OF TRUSS TOP CHORD
S9 SCALE



4 REINFORCEMENT OF TRUSS BOTTOM CHORD
S9 SCALE



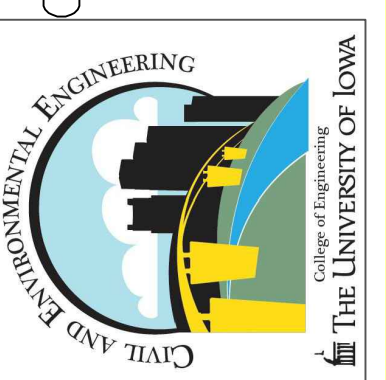
5 GIRDER TO TRUSS DETAIL
S9 SCALE



6 GIRDER REINFORCEMENT
S9 SCALE

PROJECT:	CEE: 4850
DATE :	05/10/2024
DRAWN BY:	SB/GDE
REVISION:	

THE UNIVERSITY OF IOWA
CIVIL AND ENVIRONMENTAL ENGINEERING
4105 SEAMANS CENTER FOR THE
ENGINEERING ARTS AND SCIENCES
103 S CAPITOL ST
IOWA CITY, IOWA 52242
PHONE: 319.335.5647
FAX: 319.335.5660
EMAIL: civil-hawks@iowa.edu



EDUCATIONAL - NOT FOR CONSTRUCTION

COOL & GREEN ROOF

405 MAIN ST.
DUBUQUE, IA 52001

SHEET NAME

REINFORCEMENT DE

SHEET NO.

S9