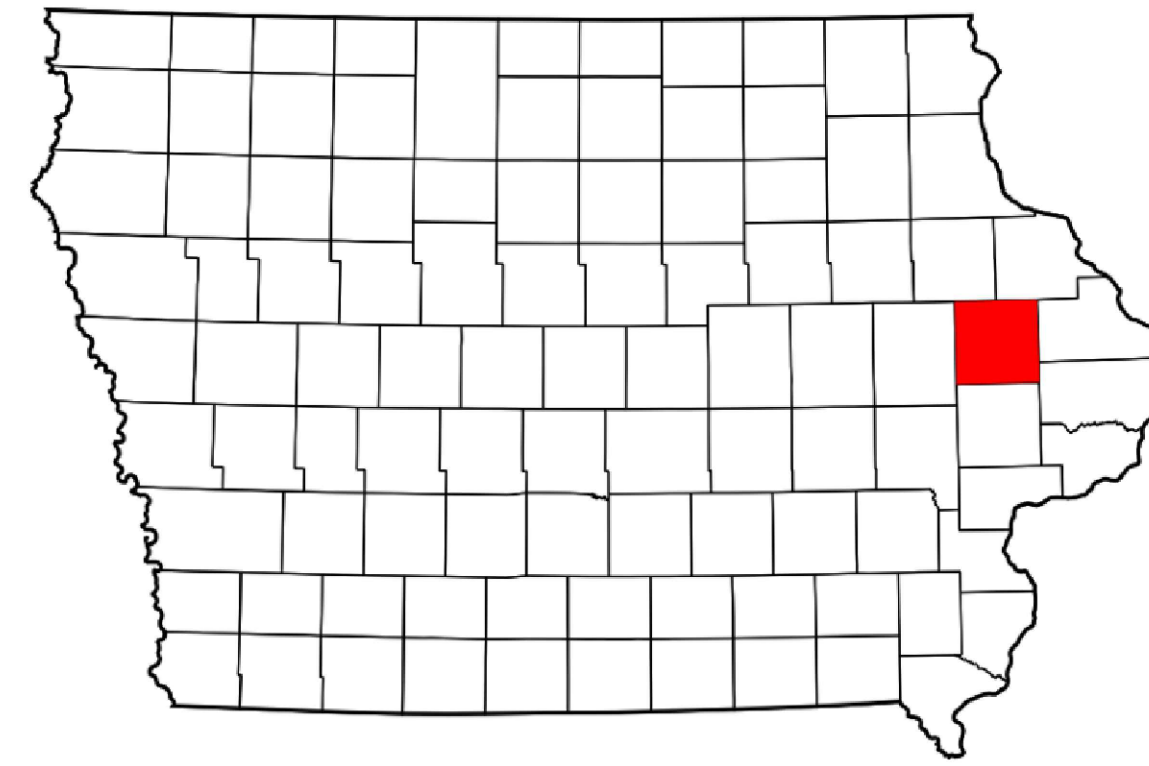
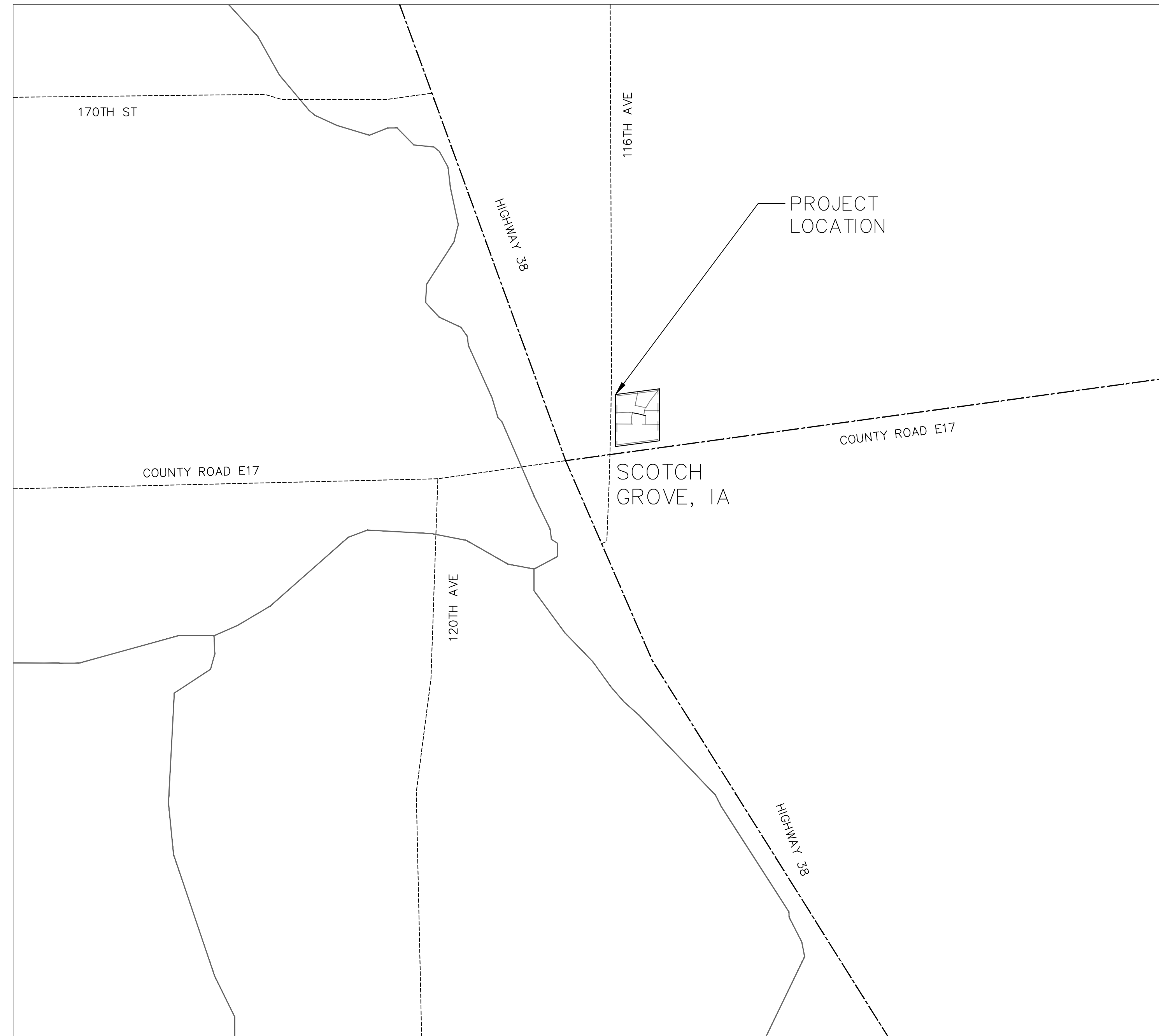


# SCOTCH GROVE ECOVILLAGE

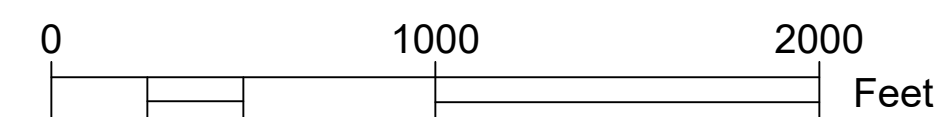
ROBERT HELGENS – SCOTCH GROVE STEERING COMMITTEE



Sheet List Table	
Sheet Number	Sheet Title
A.01	COVER SHEET
A.02	GENERAL NOTES
C.01	EXISTING CONDITIONS & REMOVALS
D.01	HIGH DENSITY SITE PLAN
D.02	LOW DENSITY SITE PLAN
G.01	DRIVE GRADING
G.02	SITE GRADING
P.01	PAVING PLAN
P.02	SIDEWALK PLAN
P.03	SIDEWALK GRADING
S.01	ADA DETAIL
S.02	STAIR DETAIL
S.03	CULVERT DETAIL
S.04	TYPICAL SECTIONS
U.01	PROPOSED UTILITIES
RR.01	EROSION CONTROL
RR.02	LANDSCAPING PLAN



PROJECT LOCATION



PROJECT: CEE-4850  
DATE: 05/06/2024  
DRAWN BY: TMM  
REVISION: N/A

**THE UNIVERSITY OF IOWA**  
**CIVIL AND ENVIRONMENTAL ENGINEERING**  
4105 SEAMANS CENTER FOR THE  
ENGINEERING ARTS AND SCIENCES  
103 S CAPITOL ST  
IOWA CITY, IOWA 52242  
PHONE: 319.335.5647  
FAX: 319.335.5660  
EMAIL: civil-hawks@iowag.edu

**IOWA**  
CIVIL & ENVIRONMENTAL  
ENGINEERING

EDUCATIONAL - NOT  
FOR CONSTRUCTION

**ECOVILLAGE**

JONES  
COUNTY

SHEET NAME

COVER  
SHEET

SHEET NO.

**A.01**

GENERAL NOTES:

1. CONTRACTOR SHALL PAY FOR ALL FEES AND PERMITS APPLICABLE TO THIS PROJECT REQUIRED BY JONES COUNTY
2. ALL WORK SHALL BE DONE IN COMPLIANCE WITH LOCAL BUILDING CODES AND STATE AND FEDERAL SAFETY REGULATIONS; EXCEPTION ON THE APPROVED AND ACQUIRED VARIANCES.
3. CONTRACTOR SHALL AT ALL TIMES KEEP THE PROJECT SITE FREE FROM ACCUMULATION OF DEBRIS OR WASTE MATERIAL. THE CONTRACTOR SHALL COORDINATE WITH THE OWNER'S REPRESENTATIVE FOR THE LOCATION OF WASTE DISPOSAL EQUIPMENT.
4. CONTRACTOR SHALL PROTECT AND PRESERVE EXISTING INFRASTRUCTURE/PLANT LIFE NOT DESIGNATED FOR DEMOLITION. AT COMPLETION OF PROJECT, CONTRACTOR SHALL REPLACE ANY SIDEWALK, CURB, OR PAVEMENT DAMAGED DURING THE CONSTRUCTION PROCESS CONFORMING TO REQUIREMENTS OF JONES COUNTY.
5. THE EXACT LOCATION OF ALL UTILITIES SHALL BE VERIFIED BY THE CONTRACTOR PRIOR TO CONSTRUCTION ACTIVITIES.
6. CONTRACTOR SHALL VISIT THE SITE OF WORK AND VERIFY EXISTING CONDITIONS, MATERIALS, AND DIMENSION.
7. SEPTIC SYSTEM MAY BE INTERCHANGED WITH AN EQUAL REPLACEMENT FROM DIFFERENT SUPPLIER
8. ALL GRADES/ELEVATIONS ARE APPROXIMATE AND BASED OFF OF 2020 COUNTY LIDAR DATA
9. SEED AND FERTILIZE ALL DISTURBED AREAS

CODES AND STANDARDS:

APPLICABLE CODES AND STANDARDS  
SUDAS 2024  
JONES COUNTY IOWA, COUNTY ORDINANCES  
LINN COUNTY IOWA, COUNTY ORDINANCES  
IOWA DNR

PROJECT:	CEE:4850
DATE :	05/06/2024
DRAWN BY:	TMM
REVISION:	N/A

**THE UNIVERSITY OF IOWA**  
**CIVIL AND ENVIRONMENTAL ENGINEERING**  
4105 SEAMANS CENTER FOR THE  
ENGINEERING ARTS AND SCIENCES  
103 S CAPITOL ST  
IOWA CITY, IOWA 52242  
PHONE: 319.335.5647  
FAX: 319.335.5660  
EMAIL: civil-hawks@iowag.edu



EDUCATIONAL - NOT  
FOR CONSTRUCTION

**ECOVILLAGE**

JONES  
COUNTY

SHEET NAME

GENERAL  
NOTES

SHEET NO.

**A.02**



EXISTING TREES REMOVE

EXISTING STRUCTURES DEMOLISH

EXISTING TREES SAVE

REMOVE AND FILL EXISTING SEPTIC HOLE PLUG PIPES

EXISTING STRUCTURES SAVE

ABANDON AND SEAL EXISTING WELL BY A LICENSED WELL DRILLER

PROJECT:	CEE: 4850
DATE :	05/06/2024
DRAWN BY:	TMM
REVISION:	N/A

**THE UNIVERSITY OF IOWA**  
**CIVIL AND ENVIRONMENTAL ENGINEERING**  
4105 SEAMANS CENTER FOR THE  
ENGINEERING ARTS AND SCIENCES  
103 S CAPITOL ST  
IOWA CITY, IOWA 52242  
PHONE: 319.335.5647  
FAX: 319.335.5660  
EMAIL: civil-hawks@iowad.edu



EDUCATIONAL - NOT FOR CONSTRUCTION

**ECOVILLAGE**  
JONES COUNTY

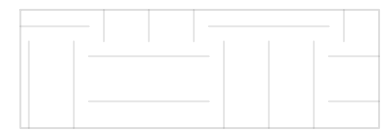
SHEET NAME  
EXISTING CONDITION & REMOVALS

SHEET NO.  
**C.01**



# LEGEND

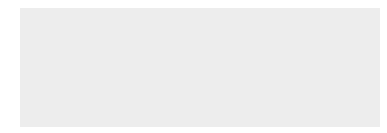
WASTEWATER



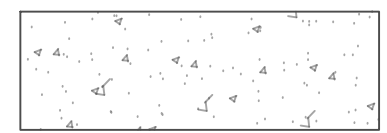
EXISTING STRUCTURES



PROPOSED STRUCTURES



PAVEMENT/GARAGE



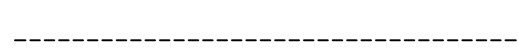
GREEN SPACE



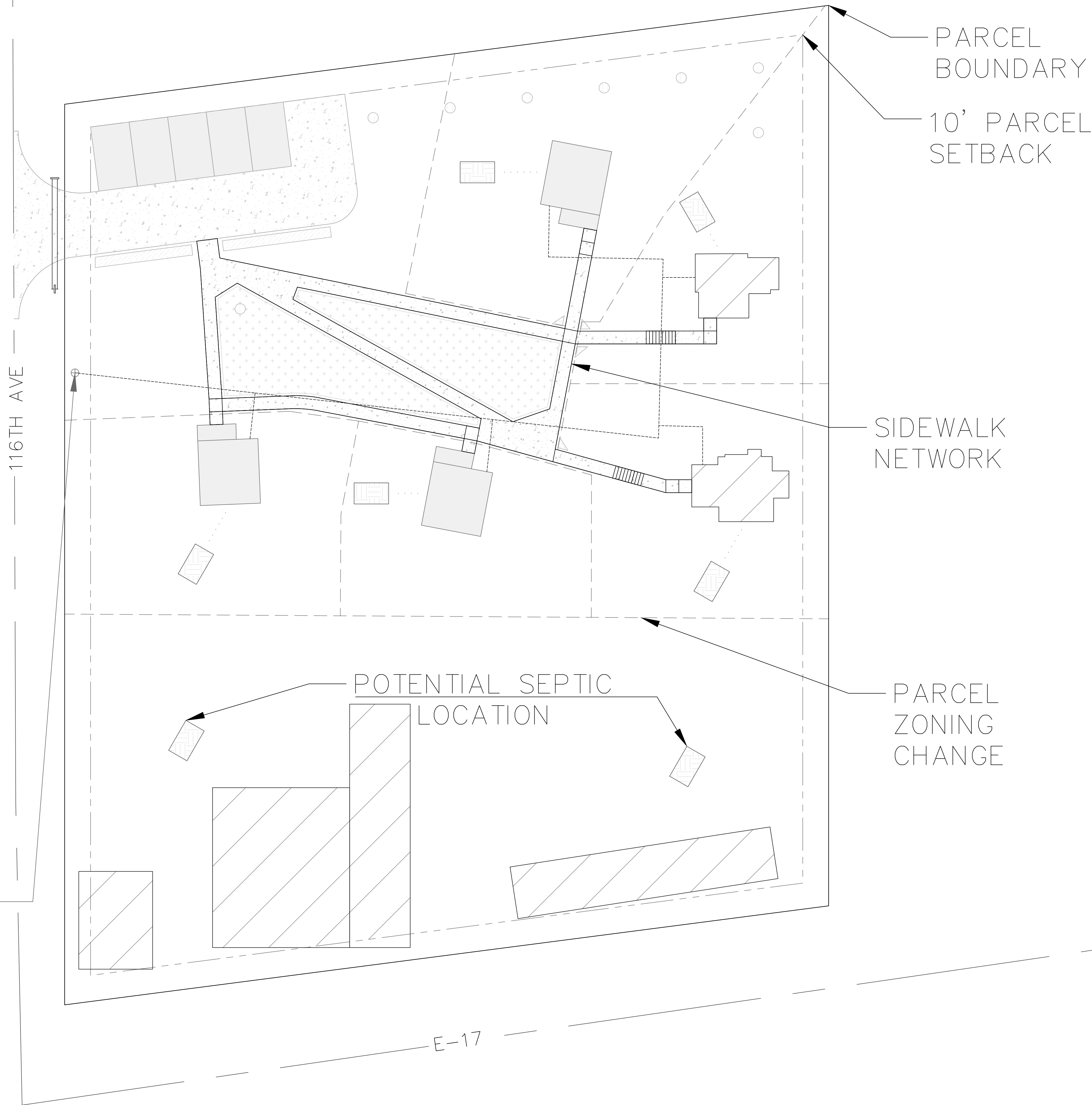
PARCEL LINE



WATER LINE



SEPTIC LINE



PROJECT:	CEE: 4850
DATE :	05/06/2024
DRAWN BY:	TMM
REVISION:	N/A

**THE UNIVERSITY OF IOWA**  
**CIVIL AND ENVIRONMENTAL ENGINEERING**  
 4105 SEAMANS CENTER FOR THE  
 ENGINEERING ARTS AND SCIENCES  
 103 S CAPITOL ST  
 IOWA CITY, IOWA 52242  
 PHONE: 319.335.5647  
 FAX: 319.335.5660  
 EMAIL: civil-hawks@iowaeu.edu



EDUCATIONAL - NOT FOR CONSTRUCTION

**ECOVILLAGE**  
 JONES COUNTY

SHEET NAME  
**LOW DENSITY SITE PLAN**

SHEET NO.  
**D.02**



PROJECT:	CCEE: 4850
DATE :	05/06/2024
DRAWN BY:	EMW
REVISION:	

**THE UNIVERSITY OF IOWA**  
**CIVIL AND ENVIRONMENTAL ENGINEERING**  
 4105 SEAMANS CENTER FOR THE  
 ENGINEERING ARTS AND SCIENCES  
 103 S CAPITOL ST  
 IOWA CITY, IOWA 52242  
 PHONE: 319.335.5647  
 FAX: 319.335.5660  
 EMAIL: civil-hawks@iowaeu.edu

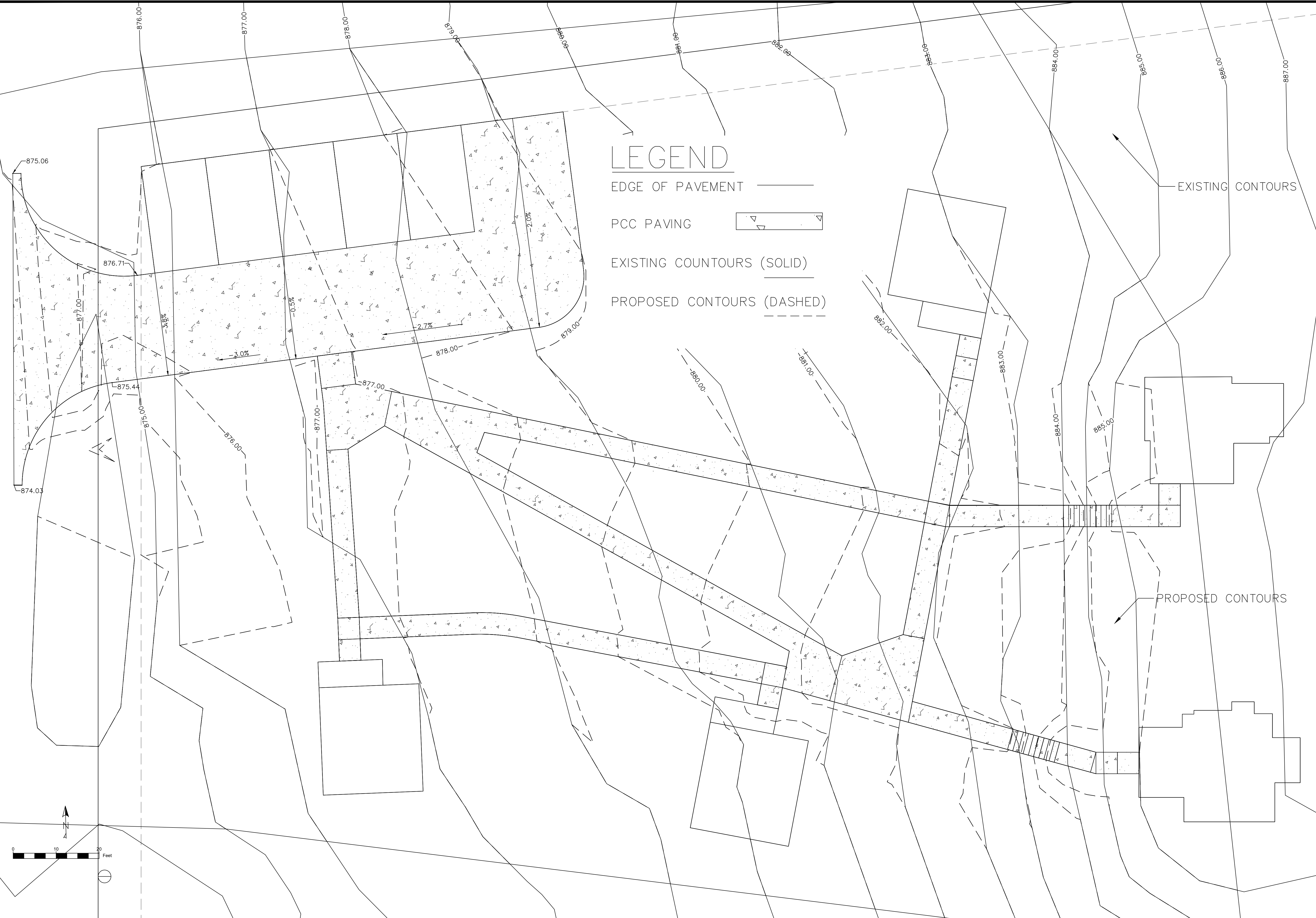


EDUCATIONAL - NOT FOR CONSTRUCTION

**ECOVILLAGE**  
 JONES COUNTY

SHEET NAME  
 DRIVE GRADING

SHEET NO.  
**G.01**



# LEGEND

- EDGE OF PAVEMENT
- PCC PAVING
- EXISTING COUNTOURS (SOLID)
- PROPOSED COUNTOURS (DASHED)

PROJECT:	CEE: 4850
DATE :	05/06/2024
DRAWN BY:	EMW
REVISION:	

**THE UNIVERSITY OF IOWA**  
**CIVIL AND ENVIRONMENTAL ENGINEERING**  
 4105 SEAMANS CENTER FOR THE  
 ENGINEERING ARTS AND SCIENCES  
 103 S CAPITOL ST  
 IOWA CITY, IOWA 52242  
 PHONE: 319.335.5647  
 FAX: 319.335.5660  
 EMAIL: civil-hawks@iowa.edu



EDUCATIONAL - NOT FOR CONSTRUCTION

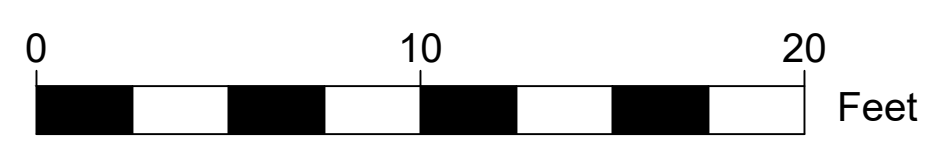
**ECOVILLAGE**  
 JONES COUNTY

SHEET NAME  
 SITE GRADING

SHEET NO.  
**G.02**



NOTE: DRIVEWAY  
TO BE 6"  
REINFORCED  
P.C. CONCRETE



PROJECT:	CEE: 4850
DATE :	05/06/2024
DRAWN BY:	EMW
REVISION:	

**THE UNIVERSITY OF IOWA**  
**CIVIL AND ENVIRONMENTAL ENGINEERING**  
 4105 SEAMANS CENTER FOR THE  
 ENGINEERING ARTS AND SCIENCES  
 103 S CAPITOL ST  
 IOWA CITY, IOWA 52242  
 PHONE: 319.335.5647  
 FAX: 319.335.5660  
 EMAIL: civil-hawks@iowae.edu



EDUCATIONAL - NOT  
FOR CONSTRUCTION

**ECOVILLAGE**  
 JONES  
 COUNTY

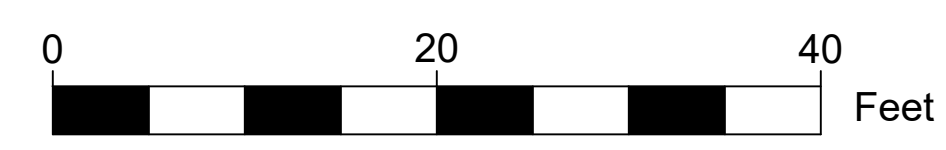
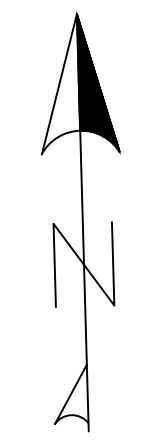
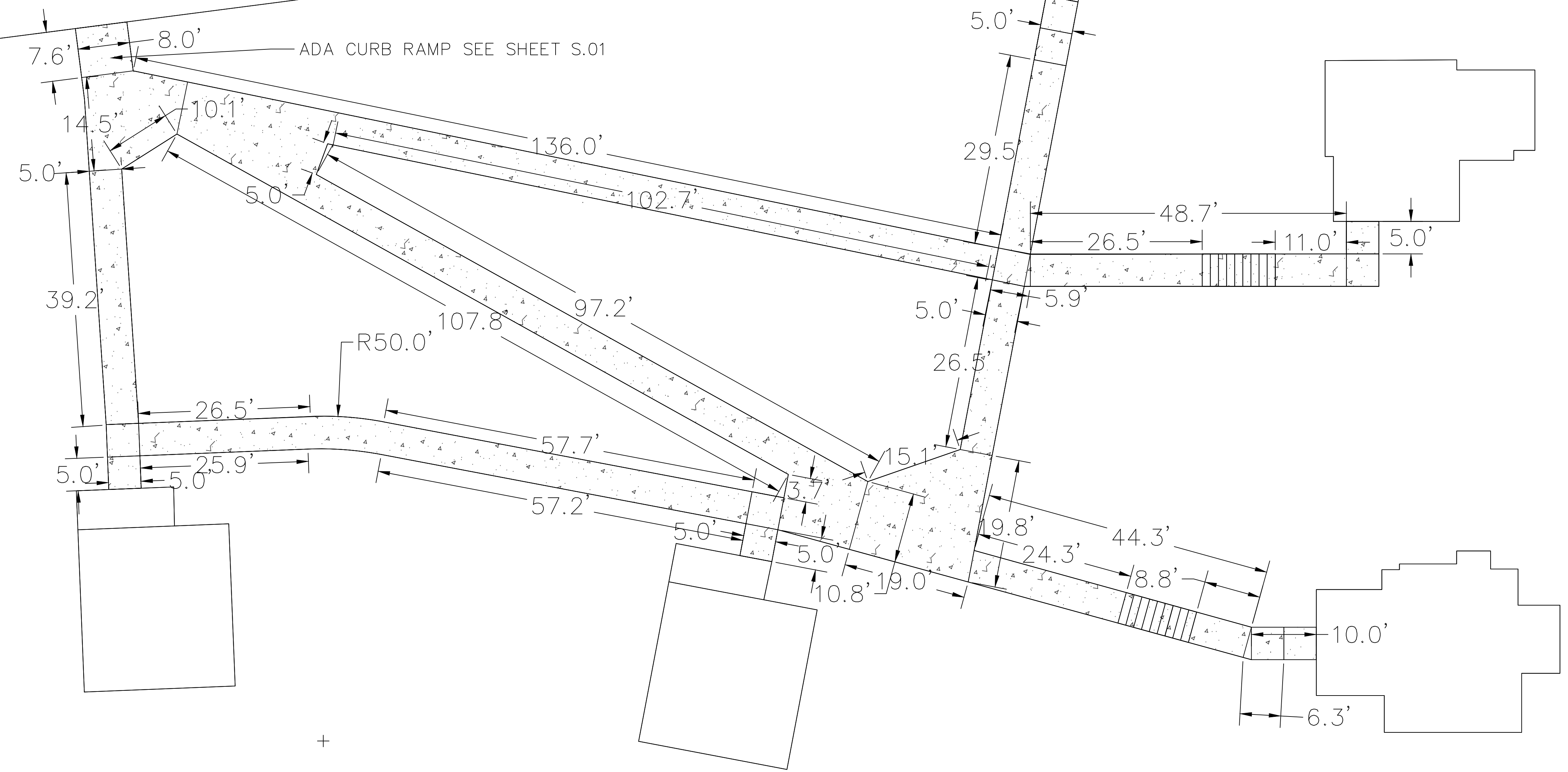
SHEET NAME  
 PAVING  
 PLAN

SHEET NO.  
**P.01**



NOTE: STAIRS TO BE BUILT WITH A 5" RISE, 15" TREAD, AND 9 STAIRS PER STEP

NOTE: SIDEWALK TO BE 5" P.C. CONCRETE



PROJECT:	CEE: 4850
DATE :	05/06/2024
DRAWN BY:	EMW
REVISION:	

**THE UNIVERSITY OF IOWA**  
**CIVIL AND ENVIRONMENTAL ENGINEERING**  
 4105 SEAMANS CENTER FOR THE  
 ENGINEERING ARTS AND SCIENCES  
 103 S CAPITOL ST  
 IOWA CITY, IOWA 52242  
 PHONE: 319.335.5647  
 FAX: 319.335.5660  
 EMAIL: civil-hawks@iowaeu



EDUCATIONAL - NOT FOR CONSTRUCTION

**ECOVILLAGE**  
 JONES COUNTY

SHEET NAME  
 SIDEWALK PLAN

SHEET NO.  
**P.02**

PROJECT: CEE: 4850  
 DATE : 05/06/2024  
 DRAWN BY: EMW  
 REVISION:

**THE UNIVERSITY OF IOWA**  
**CIVIL AND ENVIRONMENTAL ENGINEERING**  
 4105 SEAMANS CENTER FOR THE  
 ENGINEERING ARTS AND SCIENCES  
 103 S CAPITOL ST  
 IOWA CITY, IOWA 52242  
 PHONE: 319.335.5647  
 FAX: 319.335.5660  
 EMAIL: civil-hawks@iowae.edu



EDUCATIONAL - NOT  
 FOR CONSTRUCTION

**ECOVILLAGE**  
 JONES  
 COUNTY

SHEET NAME  
 SIDEWALK  
 GRADES

SHEET NO.  
**P.03**

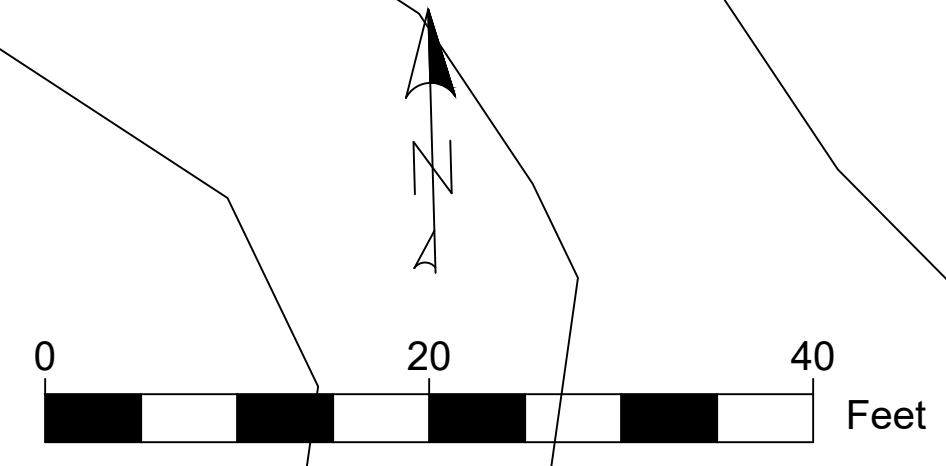
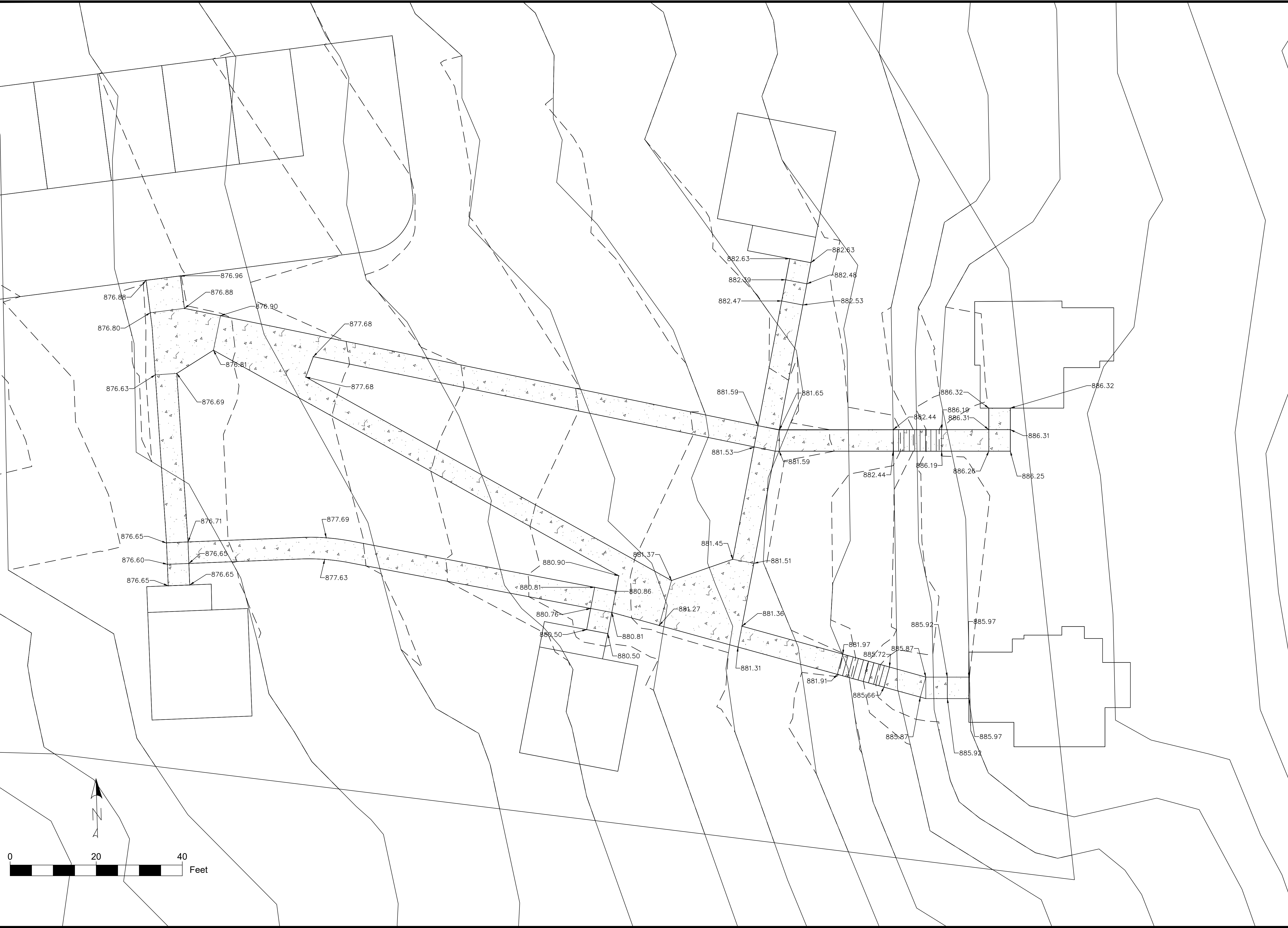
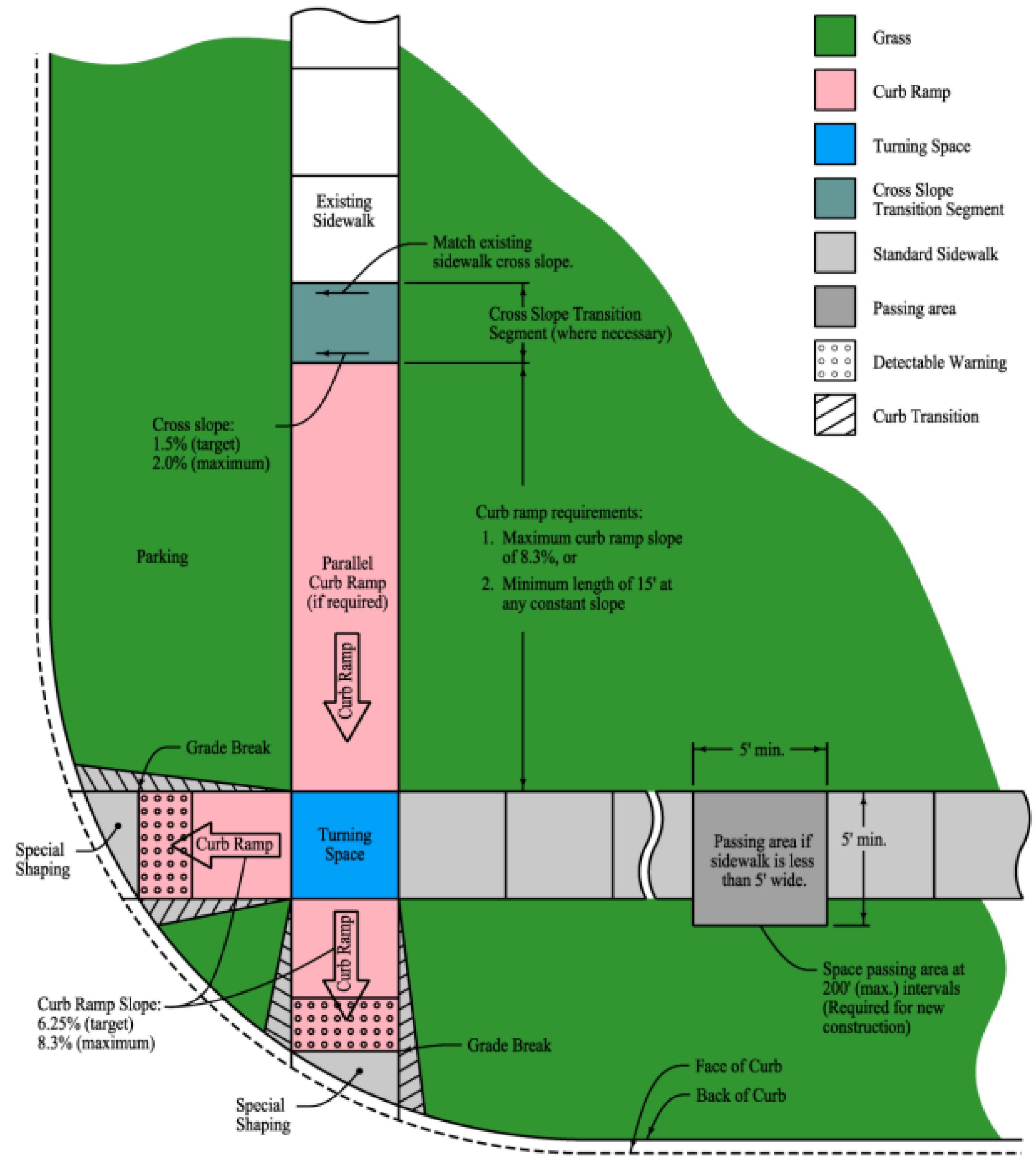
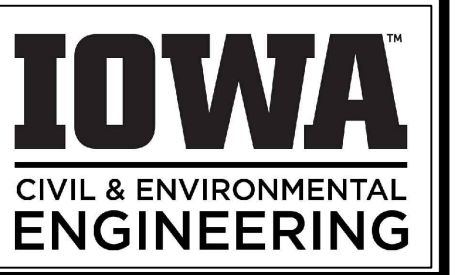


Figure 12A-2.03: Standard Sidewalk and Curb Ramp Elements



PROJECT:	CEE: 4850
DATE :	05/06/2024
DRAWN BY:	TMM
REVISION:	N/A

**THE UNIVERSITY OF IOWA**  
**CIVIL AND ENVIRONMENTAL ENGINEERING**  
 4105 SEAMANS CENTER FOR THE  
 ENGINEERING ARTS AND SCIENCES  
 103 S CAPITOL ST  
 IOWA CITY, IOWA 52242  
 PHONE: 319.335.5647  
 FAX: 319.335.5660  
 EMAIL: civil-hawks@iowa.edu

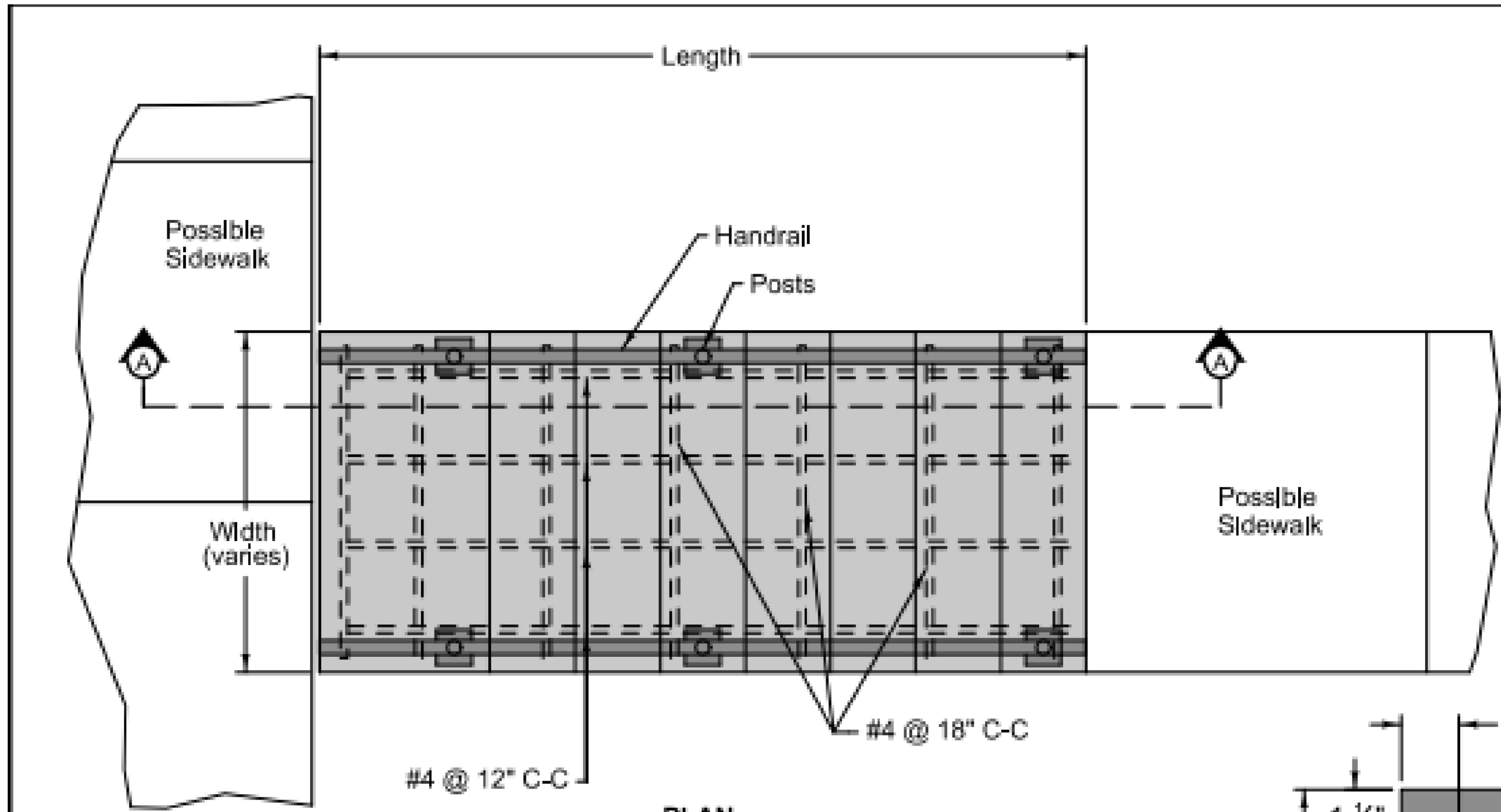


EDUCATIONAL - NOT FOR CONSTRUCTION

**ECOVILLAGE**  
 JONES COUNTY

SHEET NAME  
 ADA  
 DETAIL

SHEET NO.  
**S.01**

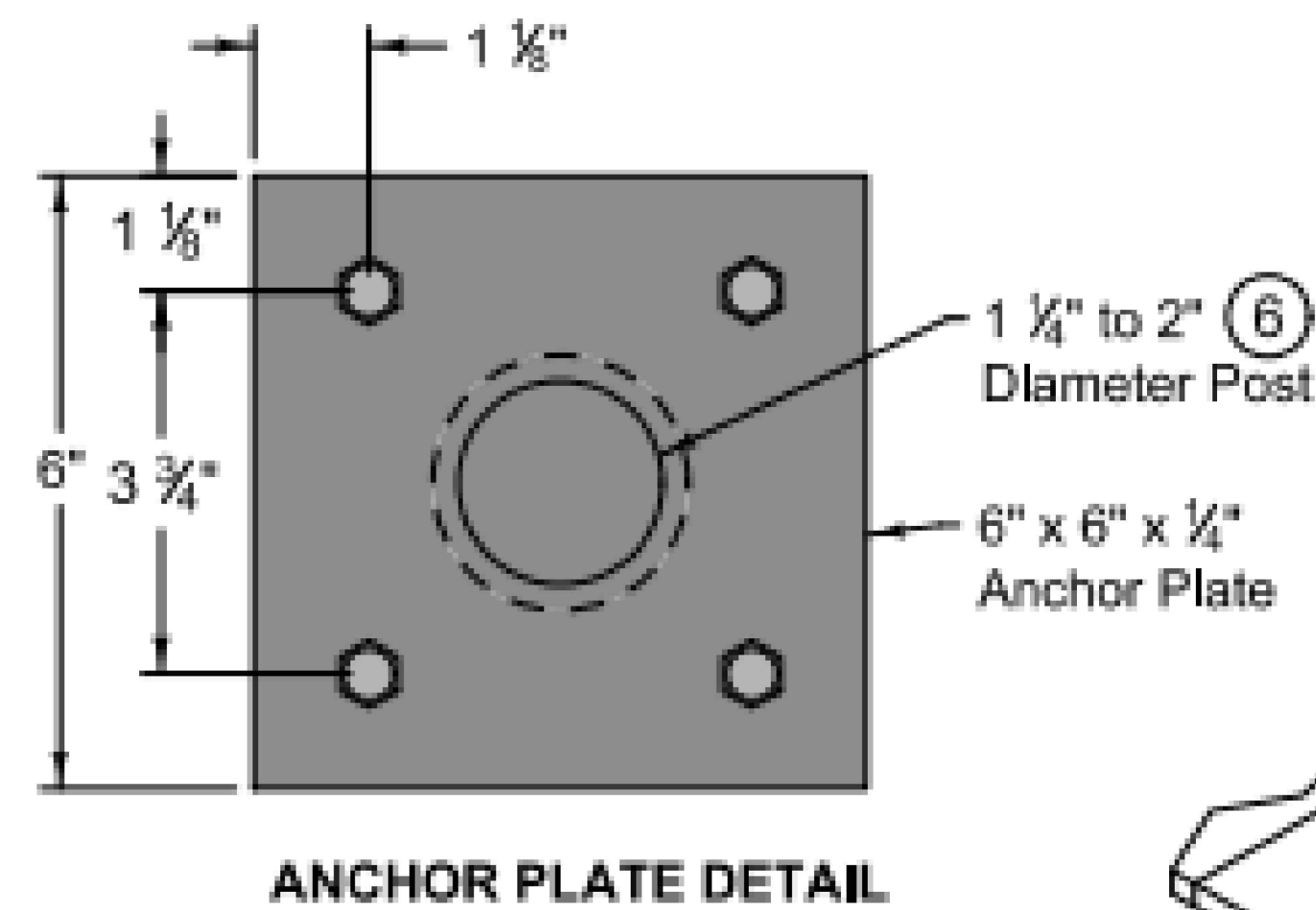


PLAN

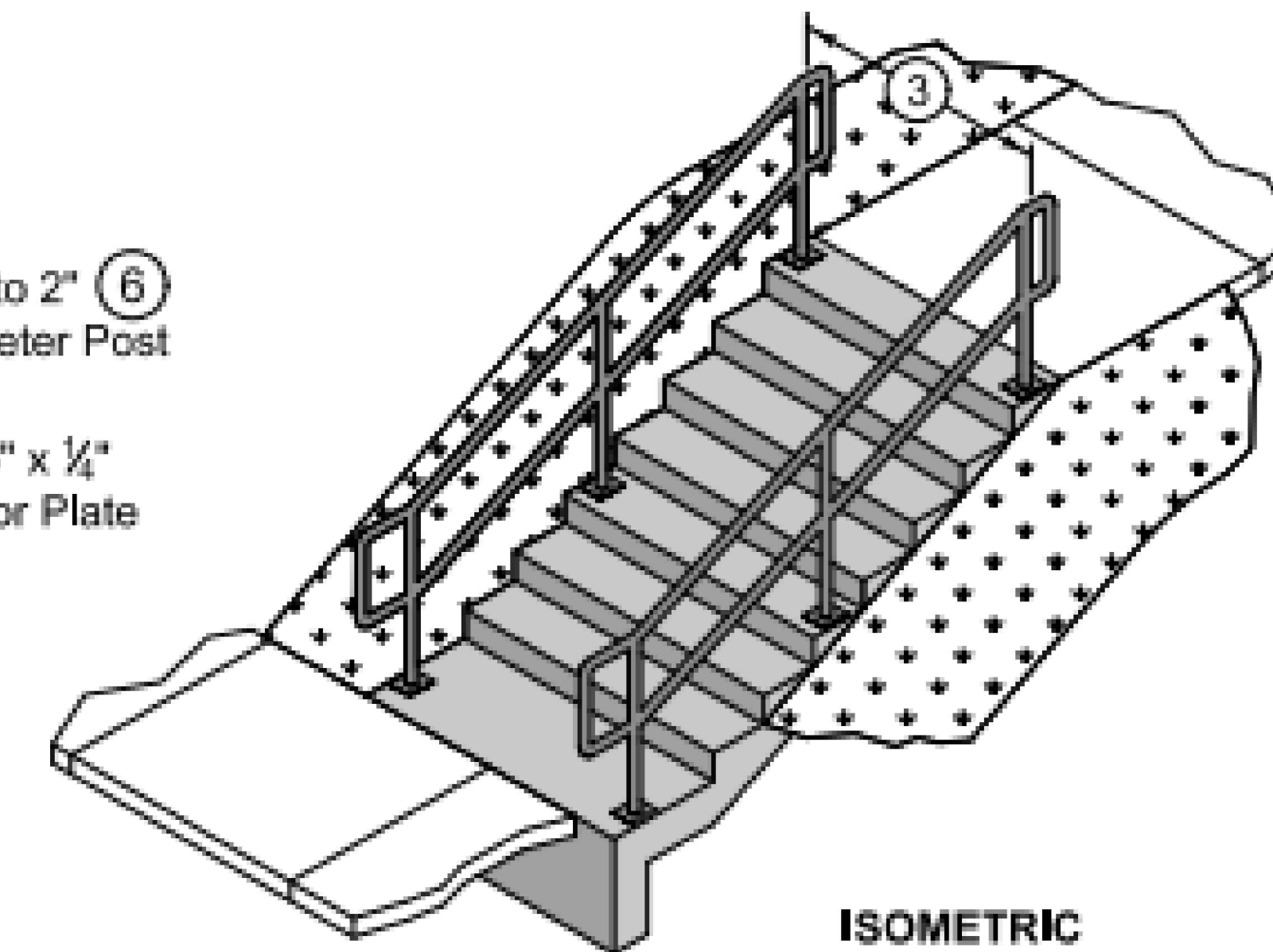
Provide a minimum of 2 inches of cover for all reinforcing.

Ensure all risers are an equal height and all treads are an equal depth within a flight of stairs.

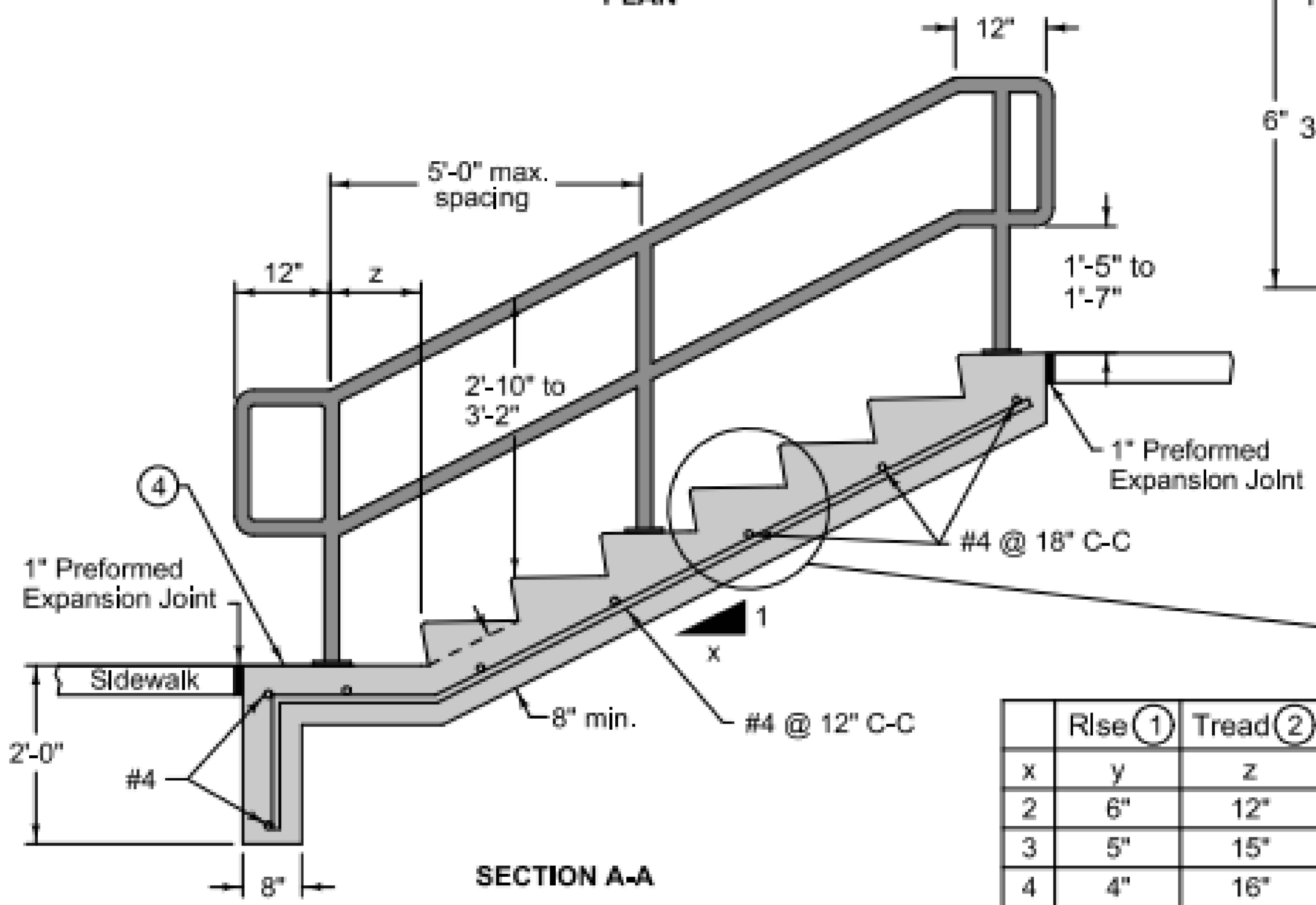
- ① Minimum riser height is 4 inches. Maximum riser height is 7 inches.
- ② Minimum tread depth is 11 inches.
- ③ Match existing sidewalk width.
- ④ Construct cross slope of landing to match adjacent sidewalk.
- ⑤ Slope tread 1% minimum to 2% maximum in any direction.
- ⑥ Weld post to anchor plate with 1/4 inch weld. Grind weld to provide smooth surface, free of burrs.



ANCHOR PLATE DETAIL

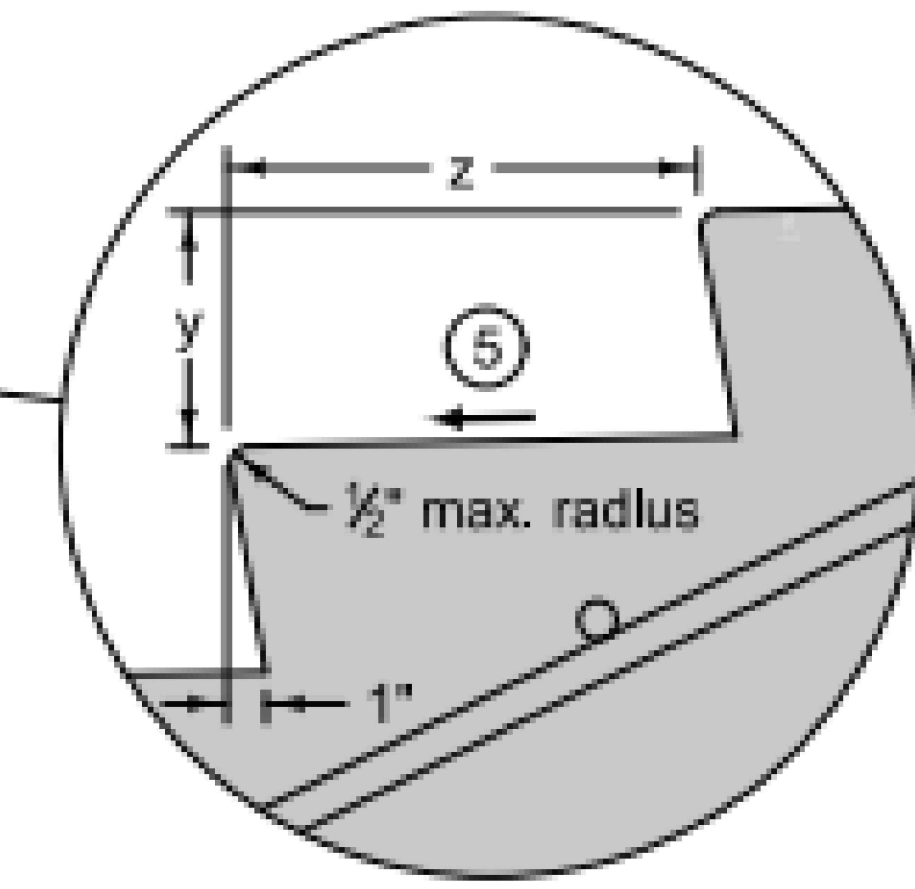


ISOMETRIC



SECTION A-A

	Rise ①	Tread ②
x	y	z
2	6"	12"
3	5"	15"
4	4"	16"



**SUDAS**

**9080.101**

SHEET 1 of 1

REVISION	
2	10-16-18

SUDAS Standard Specifications

**TYPE A CONCRETE STEPS WITH HANDRAIL**

FIGURE 9080.101 SHEET 1 OF 1

PROJECT:	CEE: 4850
DATE :	05/06/2024
DRAWN BY:	TMM
REVISION:	N/A

**THE UNIVERSITY OF IOWA**  
**CIVIL AND ENVIRONMENTAL ENGINEERING**  
 4105 SEAMANS CENTER FOR THE  
 ENGINEERING ARTS AND SCIENCES  
 103 S CAPITOL ST  
 IOWA CITY, IOWA 52242  
 PHONE: 319.335.5647  
 FAX: 319.335.5660  
 EMAIL: civil-hawks@iowa.edu



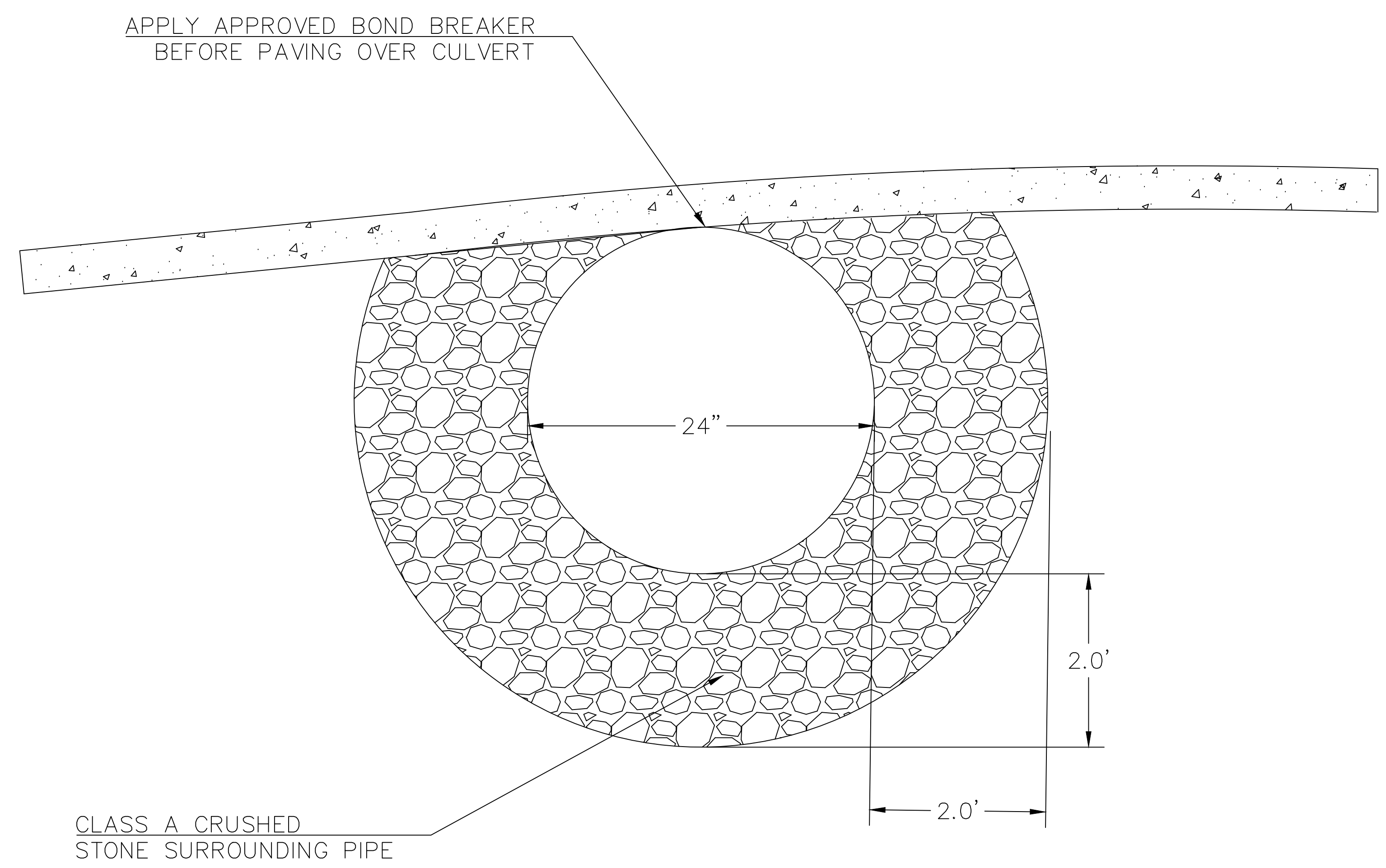
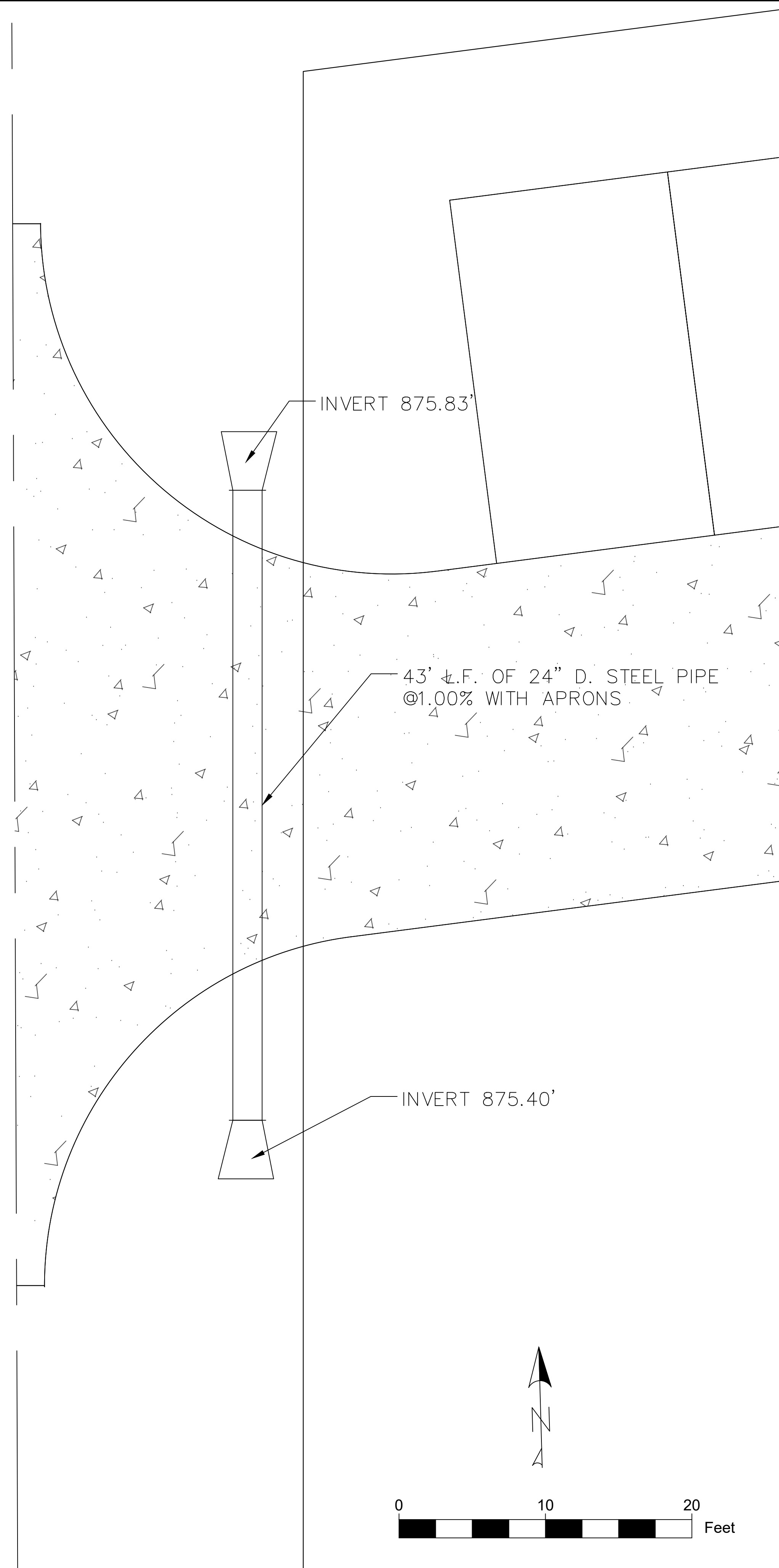
EDUCATIONAL - NOT FOR CONSTRUCTION

**ECOVILLAGE**

JONES COUNTY

SHEET NAME  
STAIR DETAIL

SHEET NO.  
**S.02**



PROJECT:	CEE: 4850
DATE :	05/06/2024
DRAWN BY:	EMW
REVISION:	

**THE UNIVERSITY OF IOWA**  
**CIVIL AND ENVIRONMENTAL ENGINEERING**  
 4105 SEAMANS CENTER FOR THE  
 ENGINEERING ARTS AND SCIENCES  
 103 S CAPITOL ST  
 IOWA CITY, IOWA 52242  
 PHONE: 319.335.5647  
 FAX: 319.335.5660  
 EMAIL: civil-hawks@iowaeu



EDUCATIONAL - NOT  
FOR CONSTRUCTION

**ECOVILLAGE**

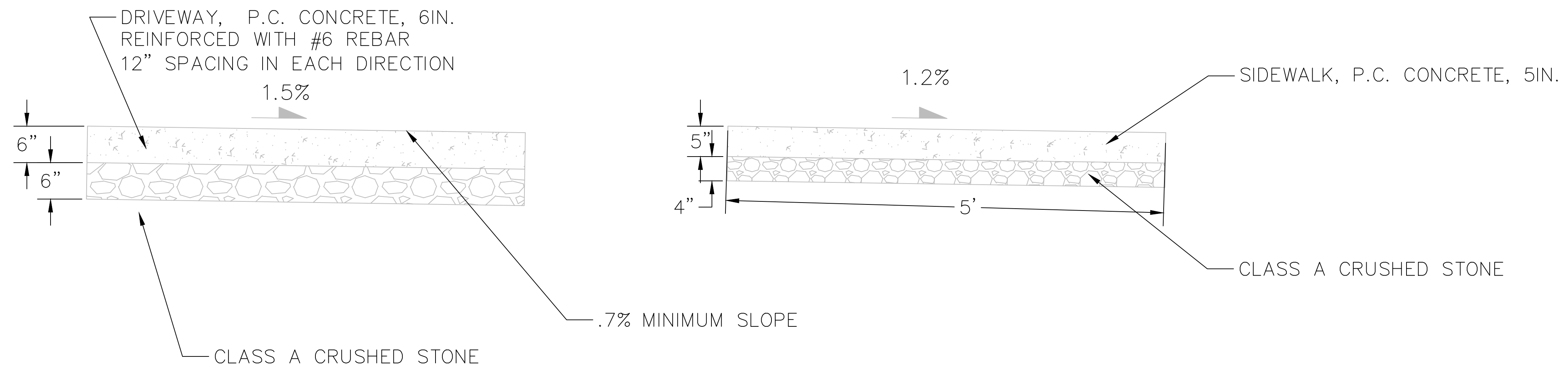
JONES  
COUNTY

SHEET NAME  
CULVERT  
DETAIL

SHEET NO.  
**S.03**

# GARAGE & DRIVEWAY

# SIDEWALK



NOT TO SCALE

PROJECT:	CEE-4850
DATE :	05/06/2024
DRAWN BY:	TMM
REVISION:	N/A

**THE UNIVERSITY OF IOWA**  
**CIVIL AND ENVIRONMENTAL ENGINEERING**  
 4105 SEAMANS CENTER FOR THE  
 ENGINEERING ARTS AND SCIENCES  
 103 S CAPITOL ST  
 IOWA CITY, IOWA 52242  
 PHONE: 319.335.5647  
 FAX: 319.335.5660  
 EMAIL: civil-hawks@iowaeu.edu



EDUCATIONAL - NOT FOR CONSTRUCTION

**ECOVILLAGE**

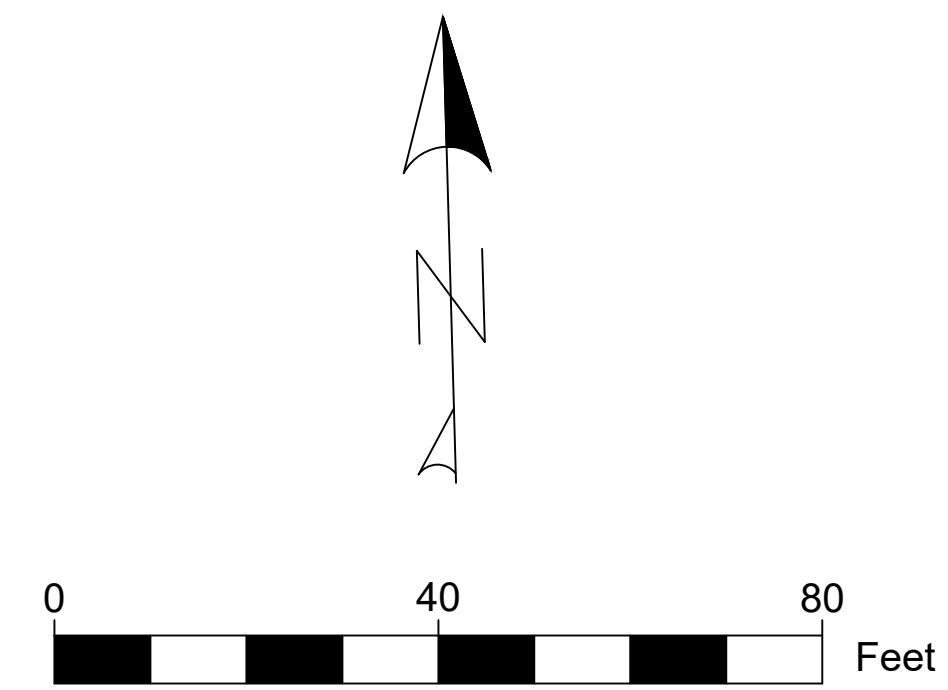
JONES COUNTY

SHEET NAME

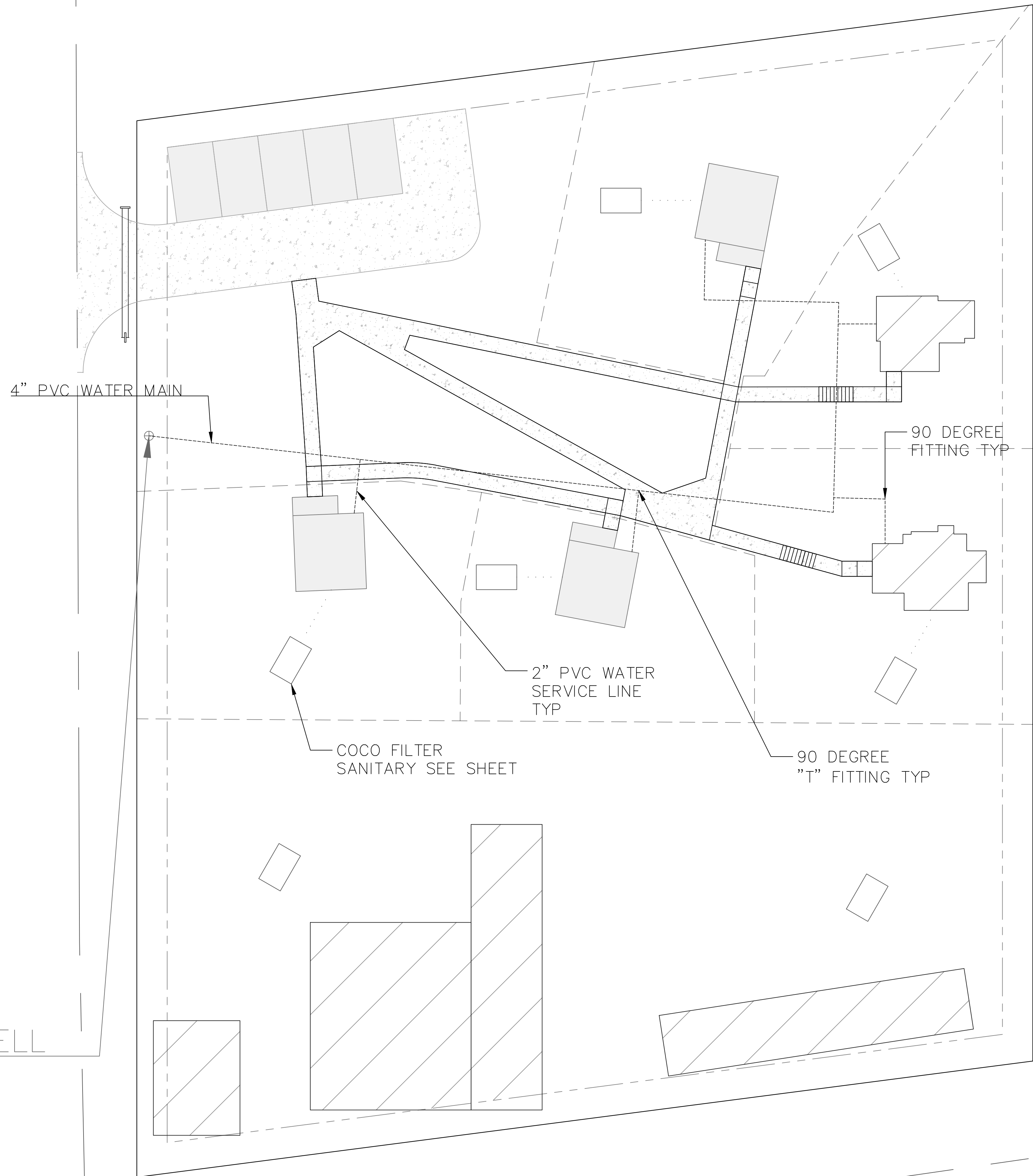
TYPICAL SECTIONS

SHEET NO.

**S.04**



PRIVATE WELL



PROJECT:	CEE: 4850
DATE :	05/06/2024
DRAWN BY:	TMM
REVISION:	N/A

**THE UNIVERSITY OF IOWA**  
**CIVIL AND ENVIRONMENTAL ENGINEERING**  
 4105 SEAMANS CENTER FOR THE  
 ENGINEERING ARTS AND SCIENCES  
 103 S CAPITOL ST  
 IOWA CITY, IOWA 52242  
 PHONE: 319.335.5647  
 FAX: 319.335.5660  
 EMAIL: [civil-hawks@iowag.edu](mailto:civil-hawks@iowag.edu)

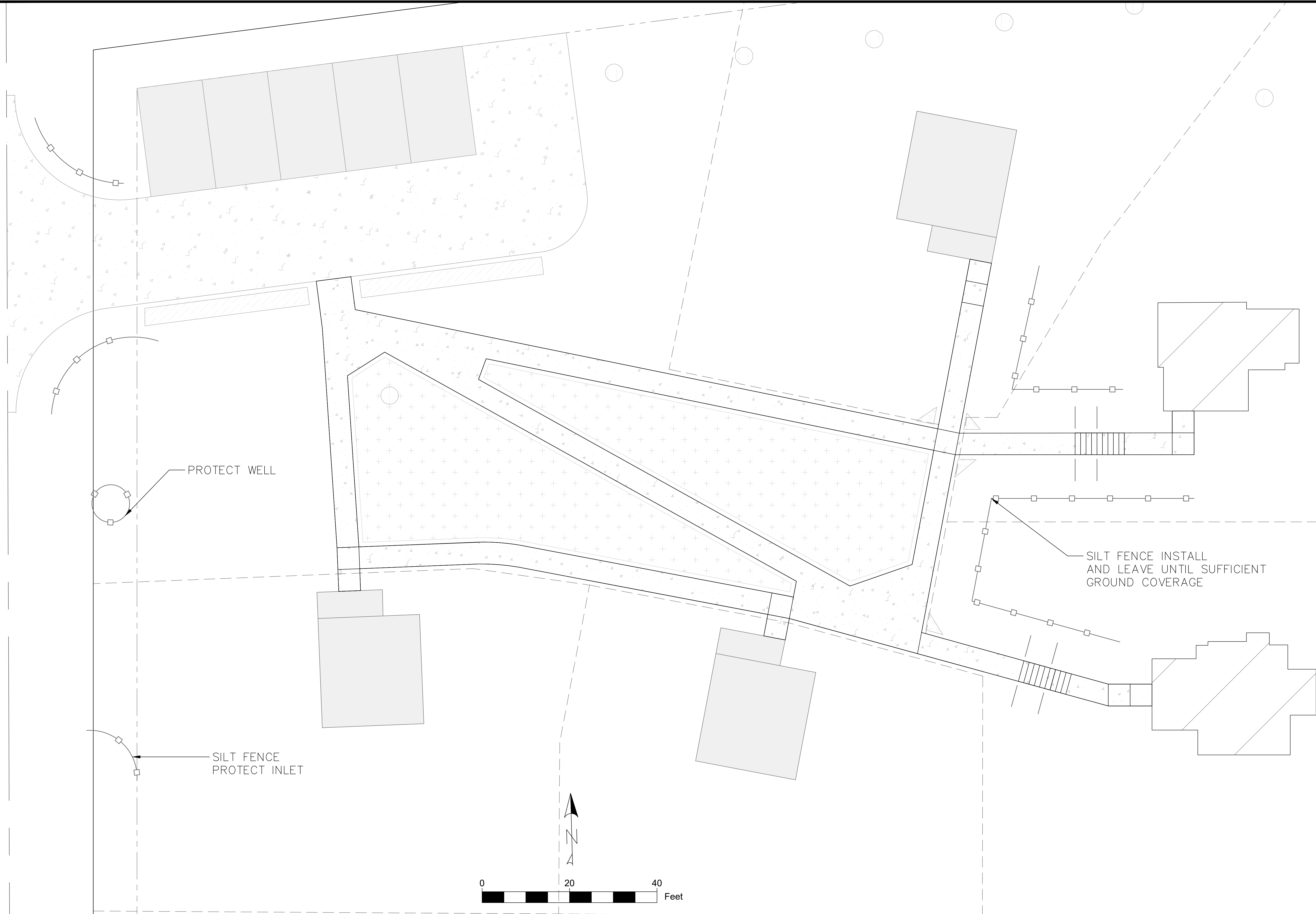


EDUCATIONAL - NOT FOR CONSTRUCTION

**ECOVILLAGE**  
 JONES COUNTY

SHEET NAME  
 PROPOSED UTILITIES

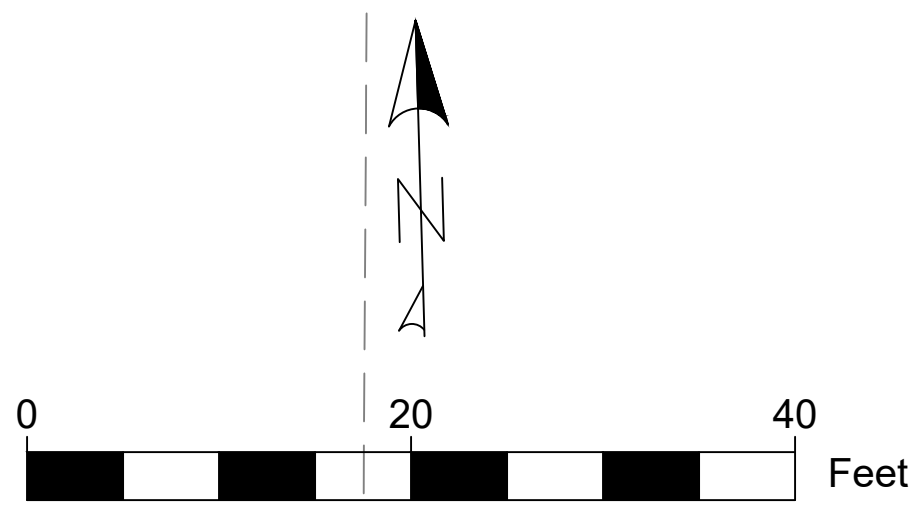
SHEET NO.  
**U.01**



PROTECT WELL

SILT FENCE PROTECT INLET

SILT FENCE INSTALL AND LEAVE UNTIL SUFFICIENT GROUND COVERAGE



PROJECT:	CEE: 4850
DATE :	05/06/2024
DRAWN BY:	TMM
REVISION:	N/A

**THE UNIVERSITY OF IOWA**  
**CIVIL AND ENVIRONMENTAL ENGINEERING**  
 4105 SEAMANS CENTER FOR THE  
 ENGINEERING ARTS AND SCIENCES  
 103 S CAPITOL ST  
 IOWA CITY, IOWA 52242  
 PHONE: 319.335.5647  
 FAX: 319.335.5660  
 EMAIL: civil-hawks@iowaeu



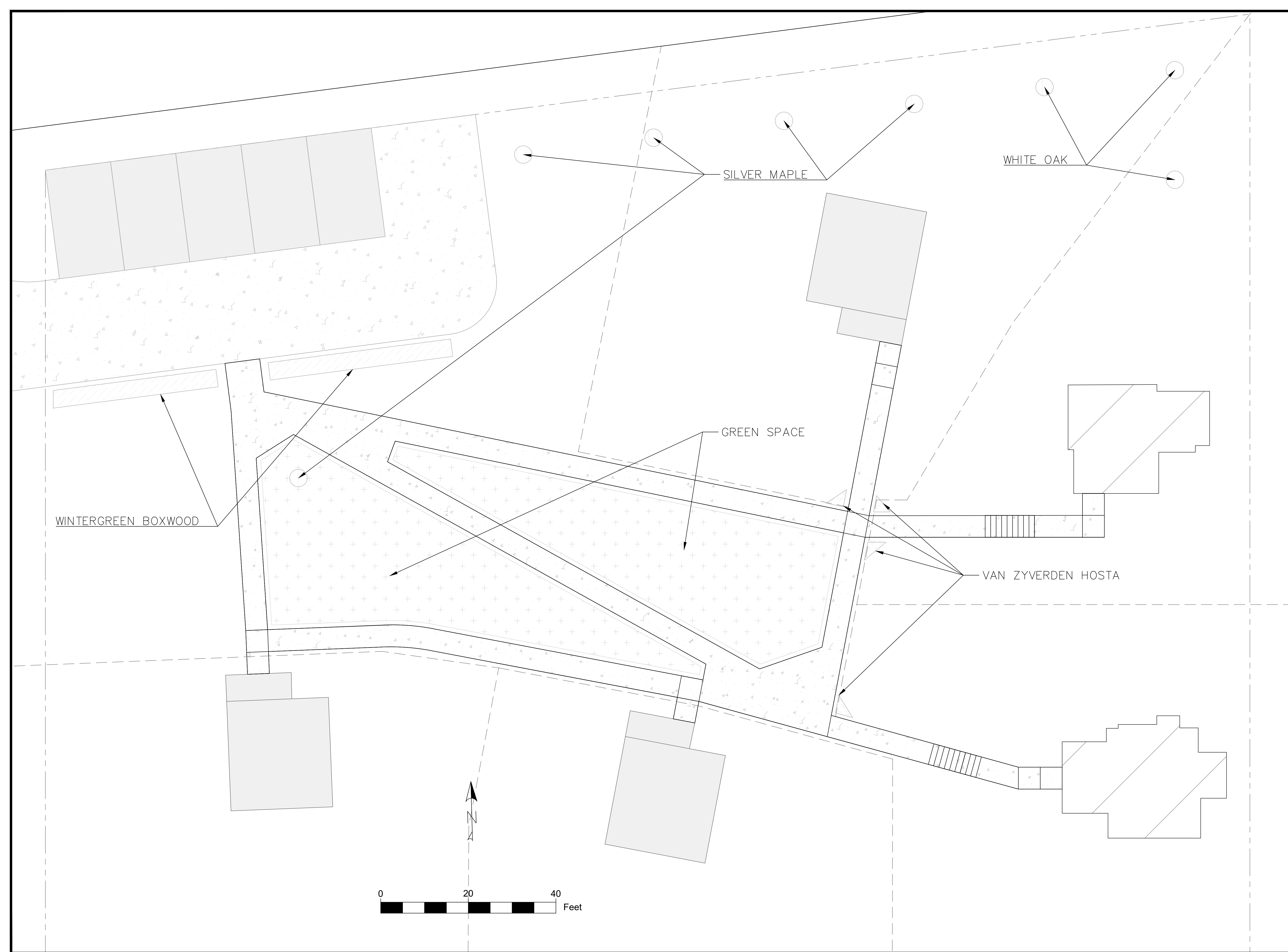
EDUCATIONAL - NOT FOR CONSTRUCTION

**ECOVILLAGE**  
 JONES COUNTY

SHEET NAME  
 EROSION CONTROL

SHEET NO.  
**RR.01**





PROJECT:	CEE: 4850
DATE :	05/06/2024
DRAWN BY:	TMM
REVISION:	N/A

**THE UNIVERSITY OF IOWA**  
**CIVIL AND ENVIRONMENTAL ENGINEERING**  
 4105 SEAMANS CENTER FOR THE  
 ENGINEERING ARTS AND SCIENCES  
 103 S CAPITOL ST  
 IOWA CITY, IOWA 52242  
 PHONE: 319.335.5647  
 FAX: 319.335.5660  
 EMAIL: civil-hawks@iowag.edu



EDUCATIONAL - NOT FOR CONSTRUCTION

**ECOVILLAGE**  
 JONES COUNTY

SHEET NAME  
 LANDSCAPING PLAN

SHEET NO.  
**RR.02**