



SIDNEY PARK EXPANSION

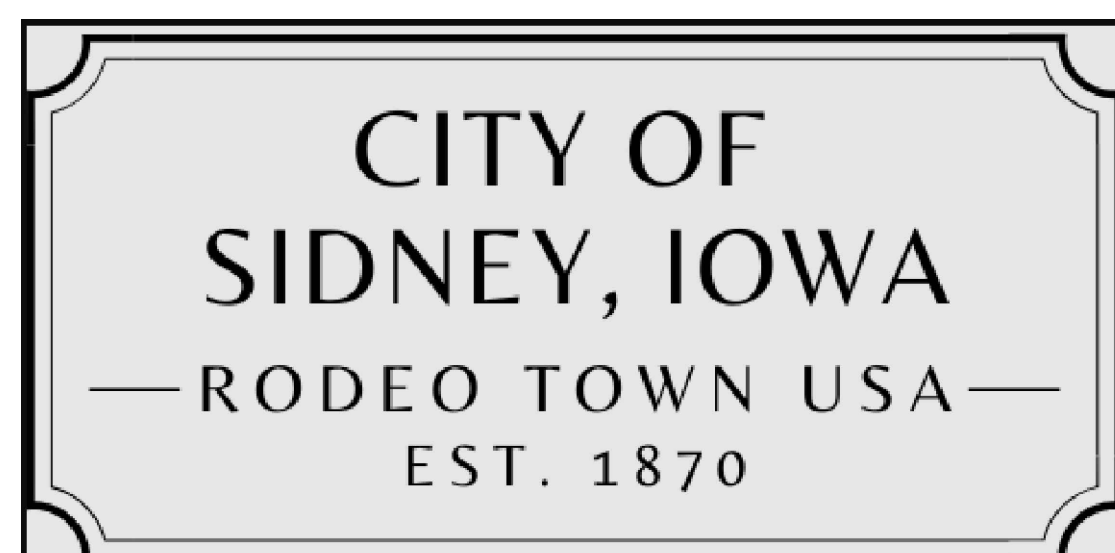
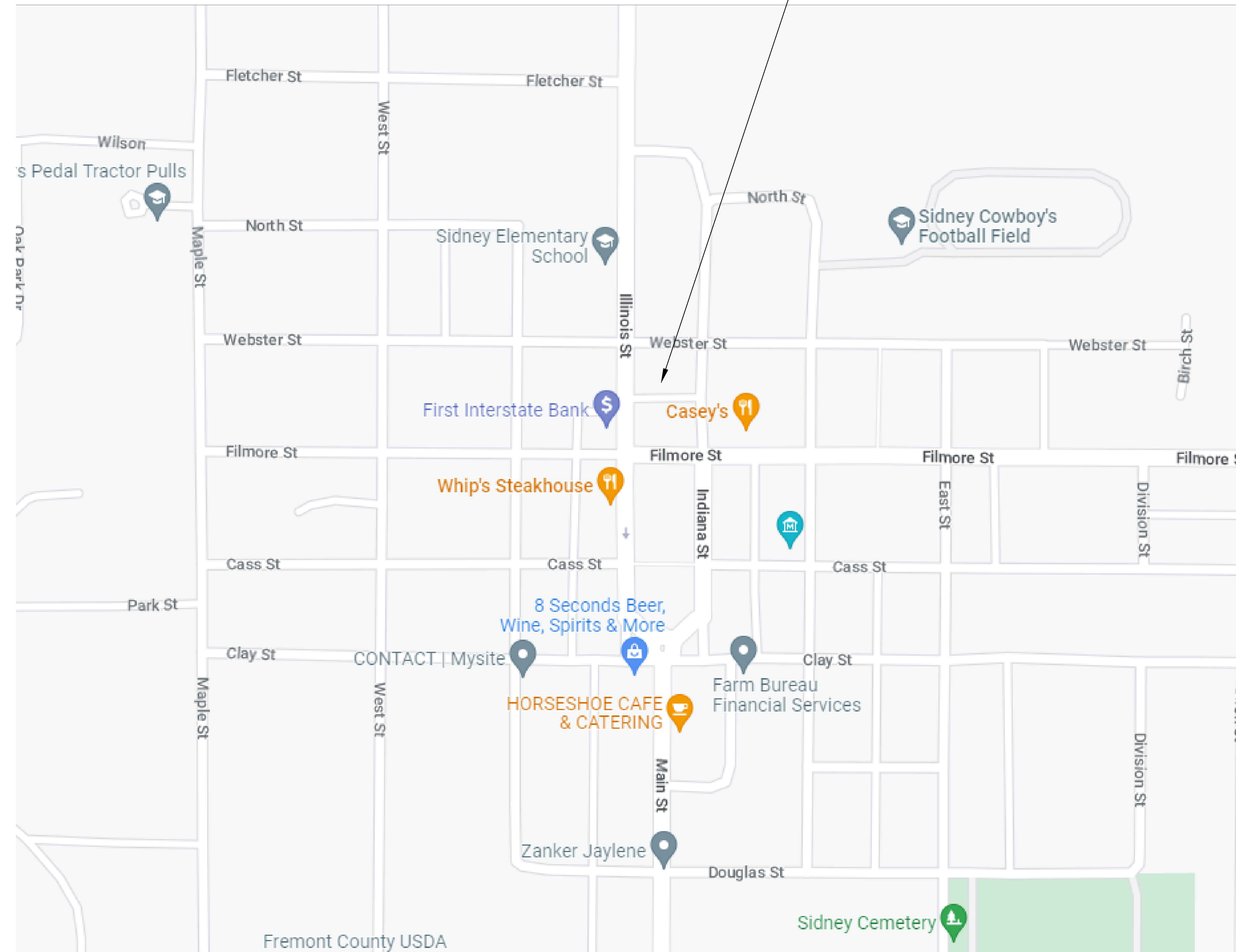
909 ILLINOIS ST, SIDNEY, IA 51652

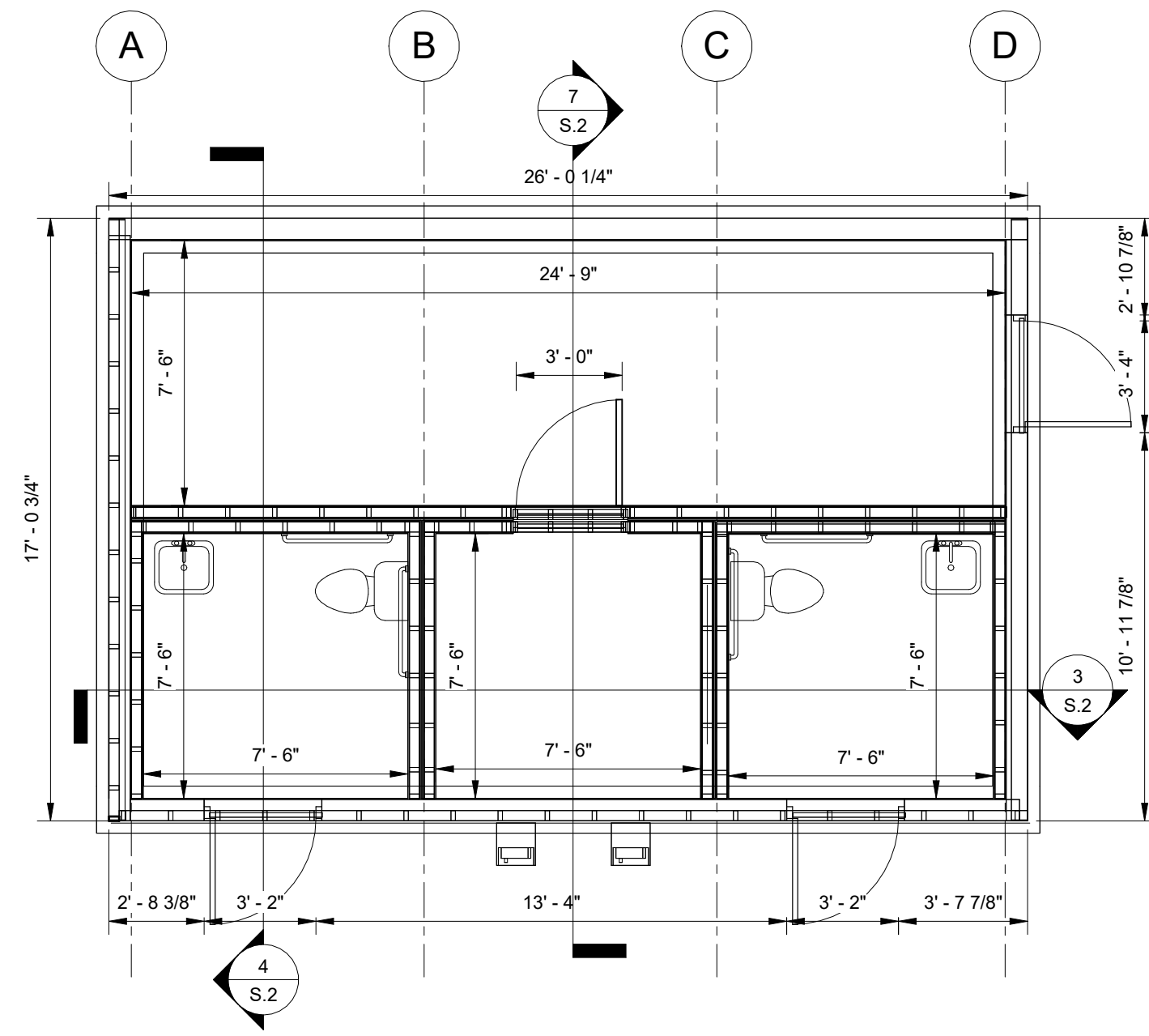
UNIVERSITY OF IOWA

CEE: 4850

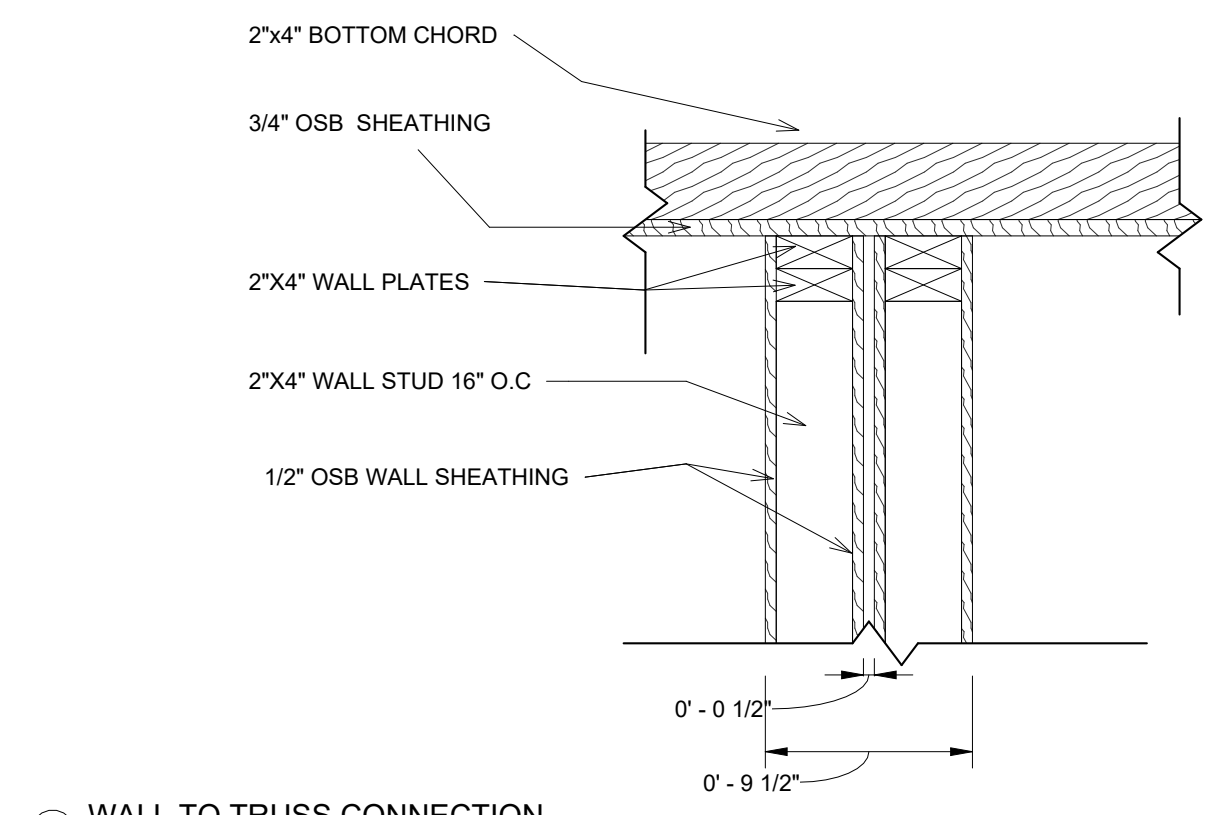
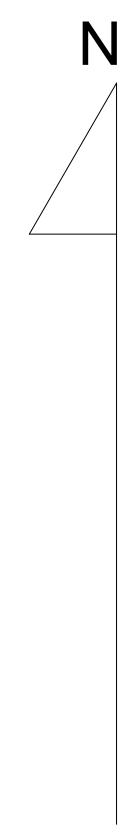
SHEET INDEX	
SHEET NO	SHEET NAME
1	COVER SHEET
A1	RESTROOM FLOOR PLAN
A2	COURT FLOOR PLAN
A3	ARCH. DETAILS
C2.1	SITE PLAN
C3.1	EXISTING GROUND GRADING PLAN
C3.2	PROPOSED GROUND GRADING PLAN
C4.1	TRAIL LAYOUT
C4.2	TRAIL PLAN AND PROFILE
C5.1	SITE DETAILS

SITE LOCATION

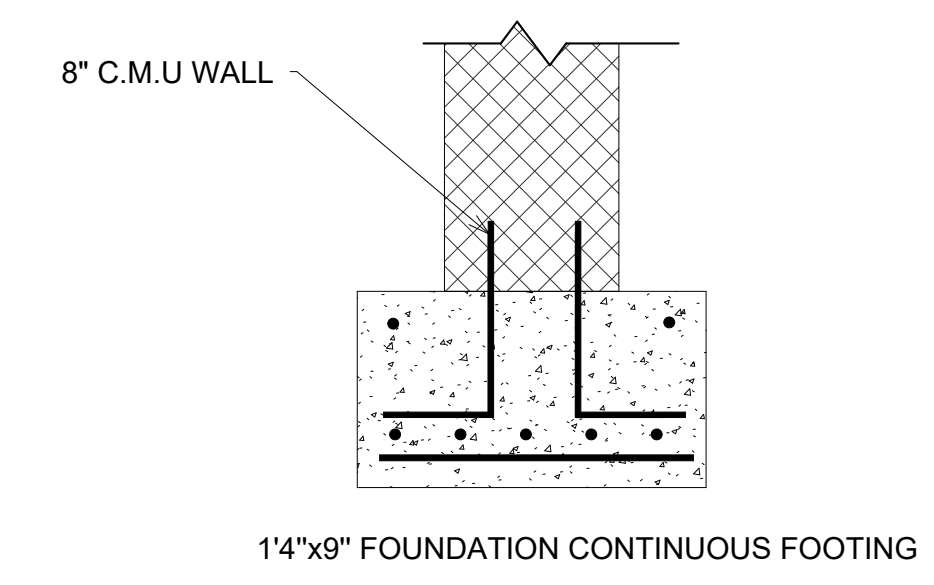




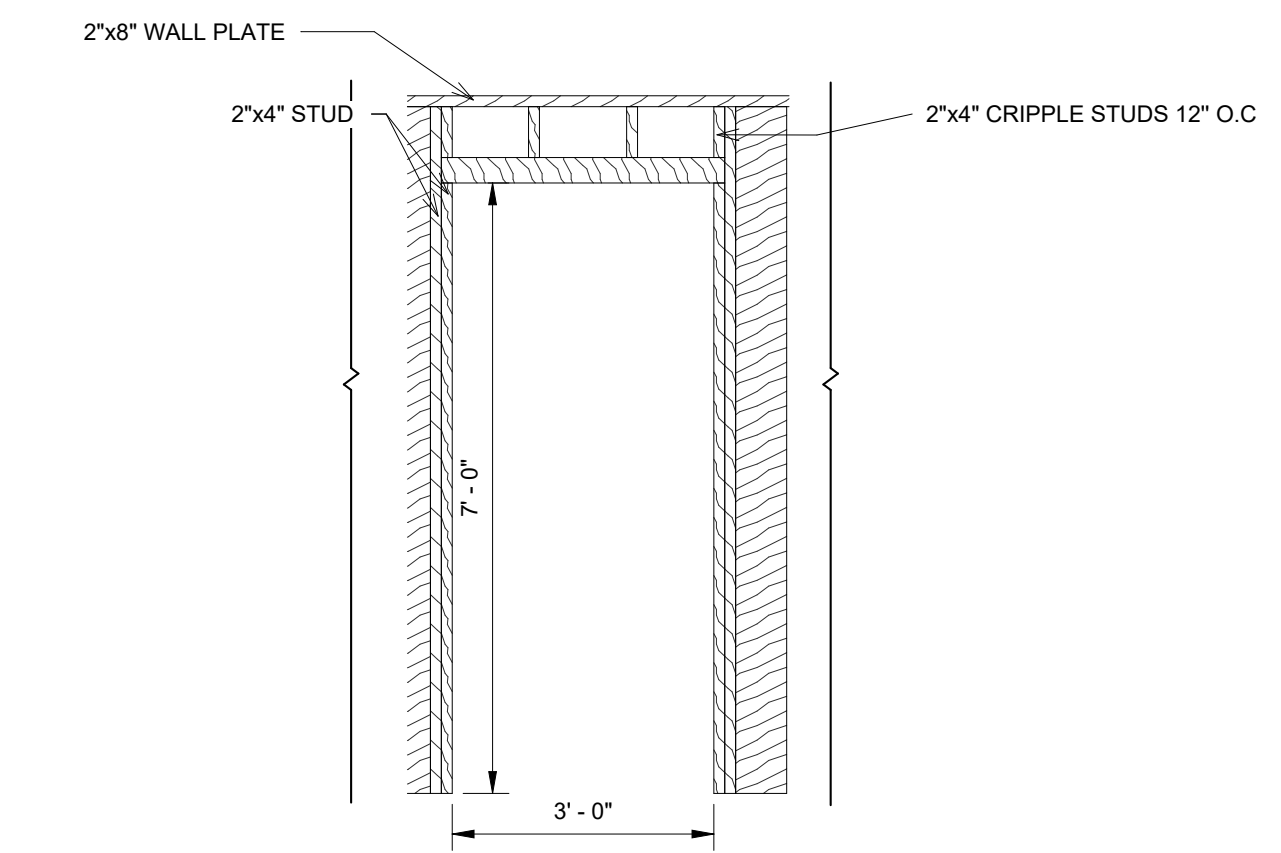
1 Floor Plan
1/4" = 1'-0"



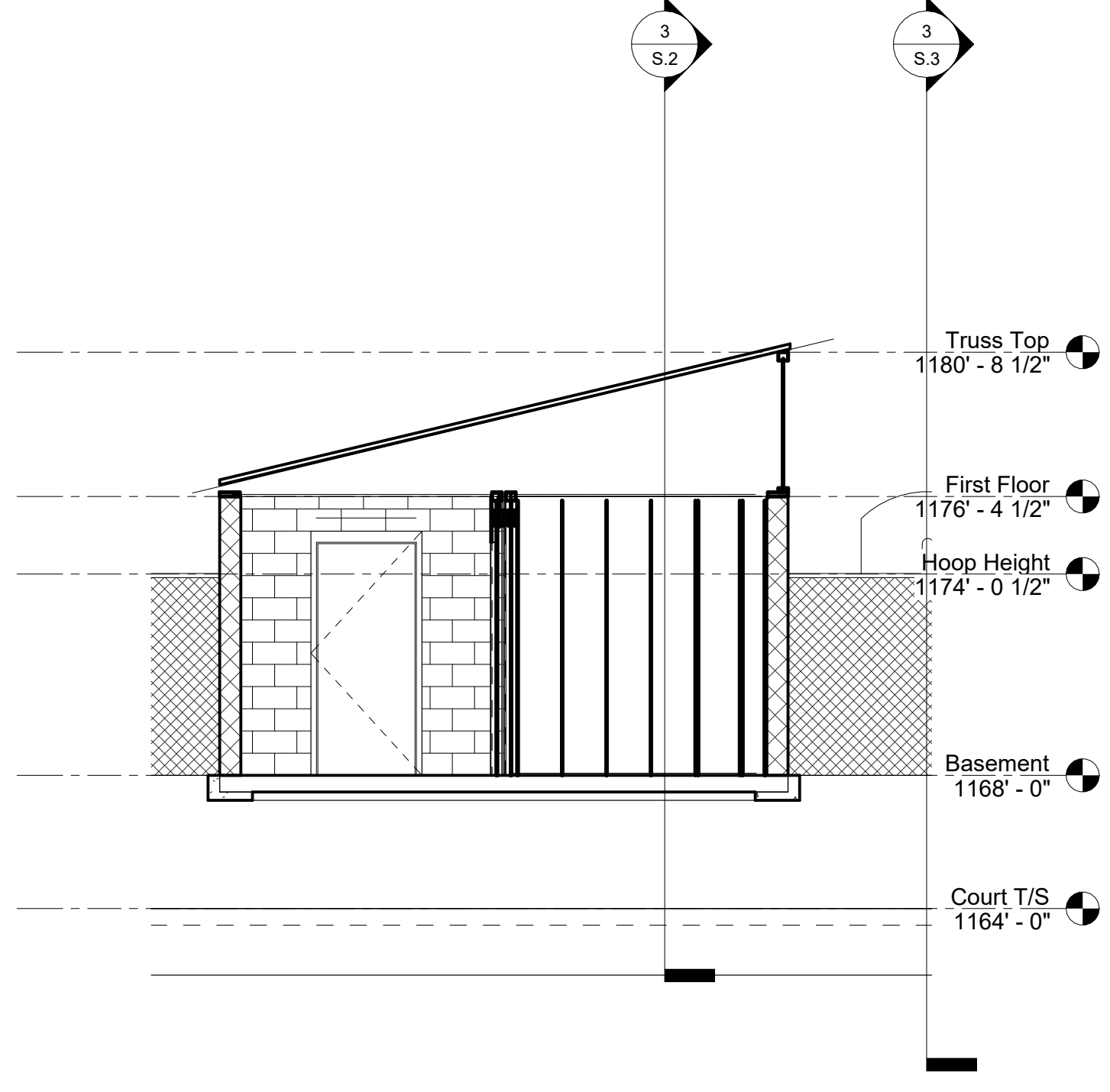
5 WALL TO TRUSS CONNECTION
1 1/2" = 1'-0"



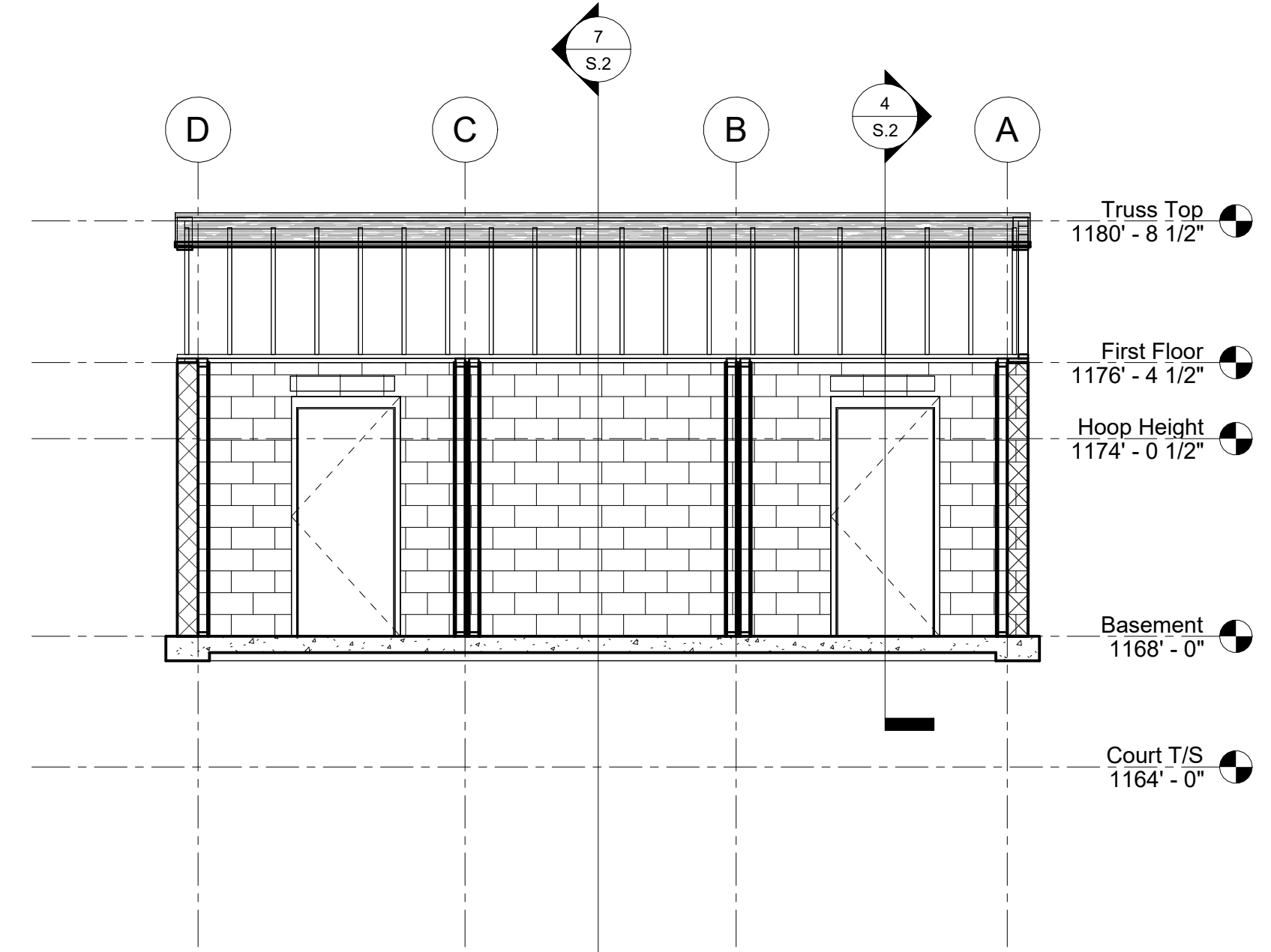
6 CONTINUOUS FOOTING
1 1/2" = 1'-0"



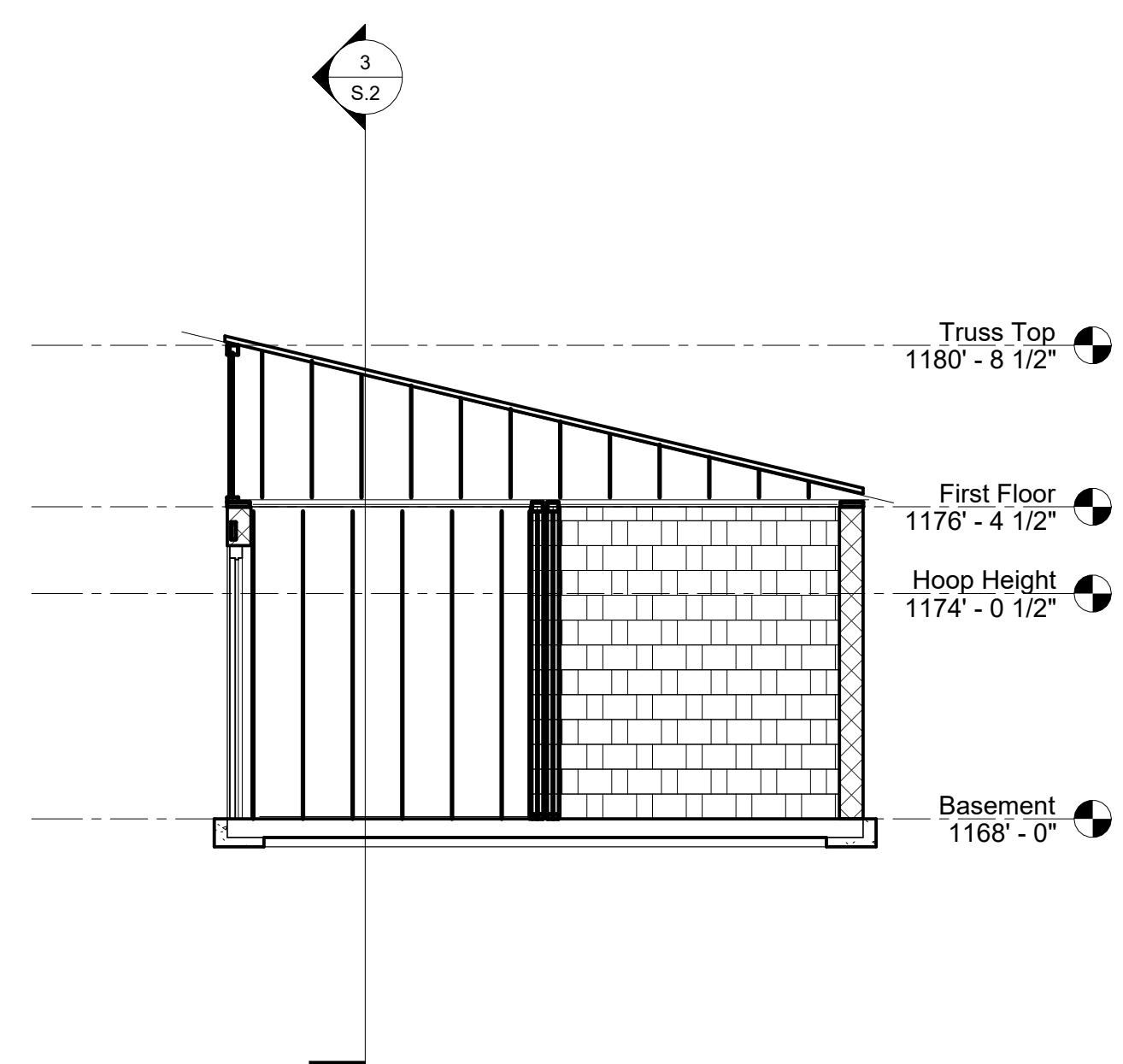
2 INTERIOR DOOR DETAIL
1/2" = 1'-0"



7 Section 5
1/4" = 1'-0"



3 Section 1
1/4" = 1'-0"



4 Section 2
1/4" = 1'-0"

PROJECT:	CEE-4850
DATE:	4/7/2023
DRAWN BY:	CJC
REVISION:	

THE UNIVERSITY OF IOWA
CIVIL AND ENVIRONMENTAL ENGINEERING
 4105 SEAMAN CENTER FOR THE
 ENGINEERING ARTS AND SCIENCES
 103 S. CAPITOL ST.
 IOWA CITY, IOWA 52242
 PHONE: 319.335.5647
 FAX: 319.335.5660
 EMAIL: civil-hawks@uiowa.edu



EDUCATIONAL - NOT
FOR CONSTRUCTION

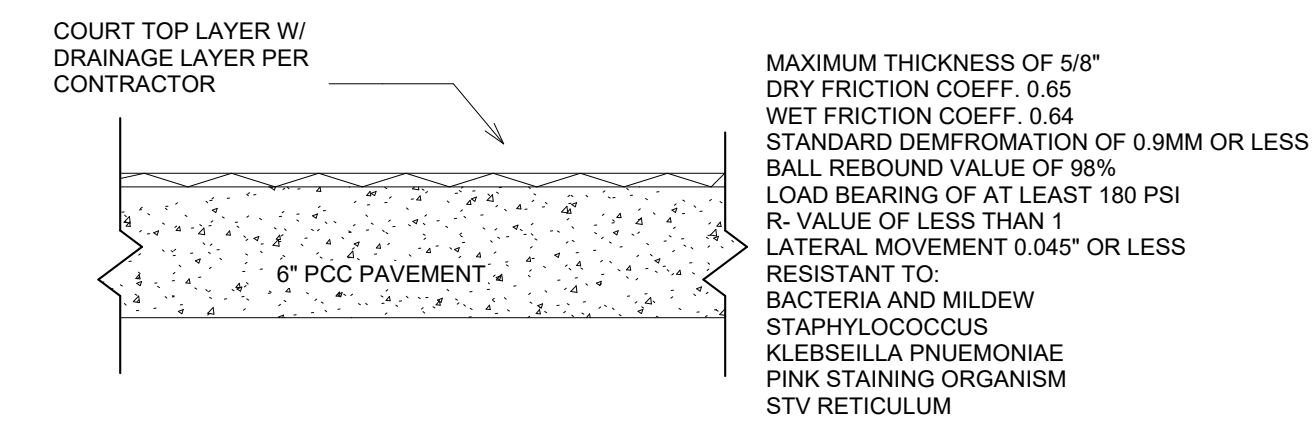
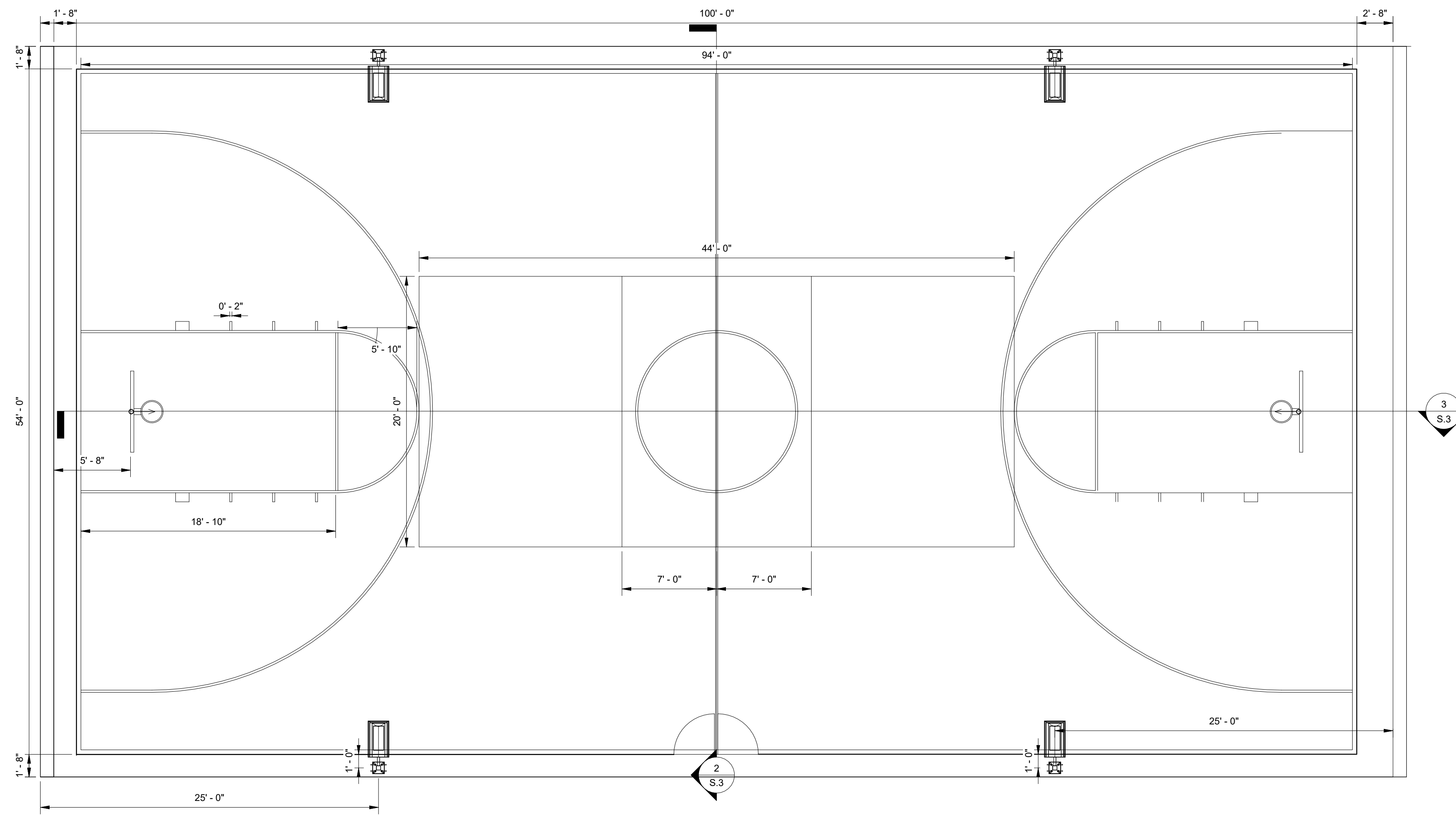
SIDNEY PARK EXPANSION

909 ILLINOIS ST.,
SIDNEY, IOWA, 51652

SHEET NAME
RESTROOM
FLOOR PLAN

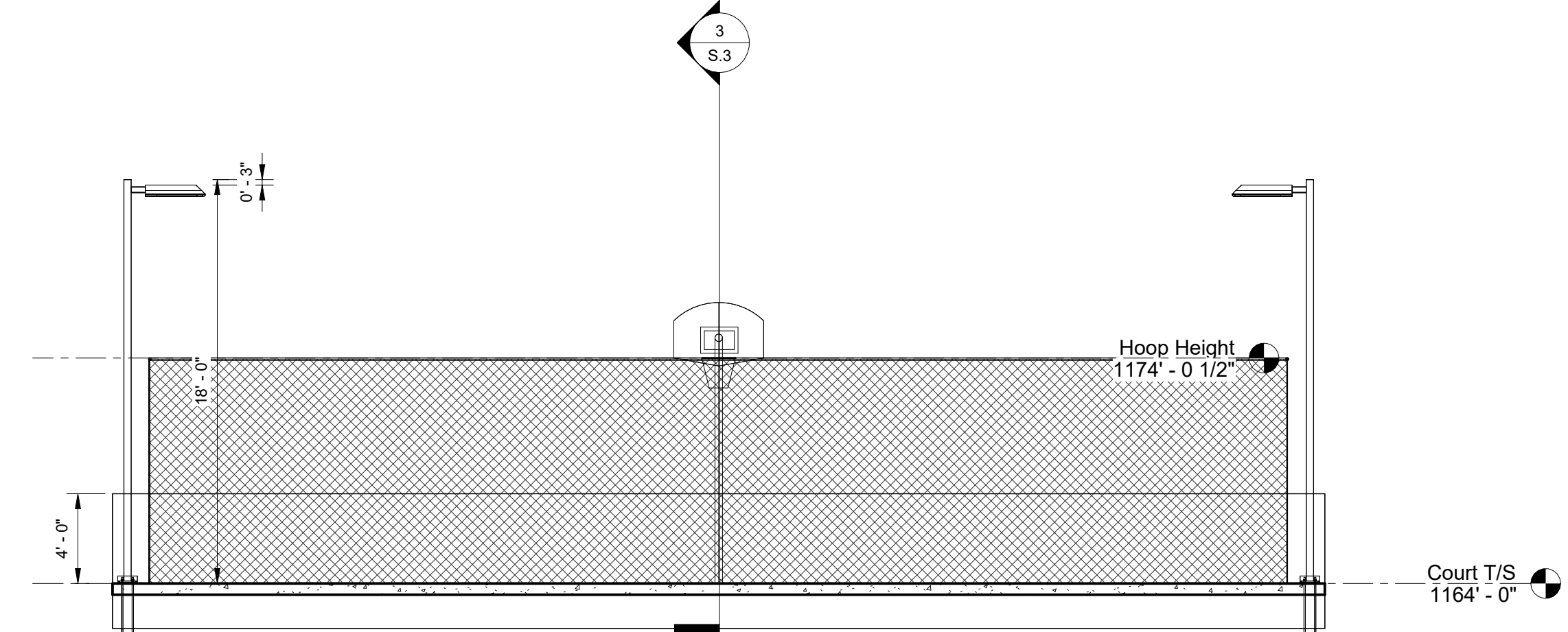
SHEET NO.

A1

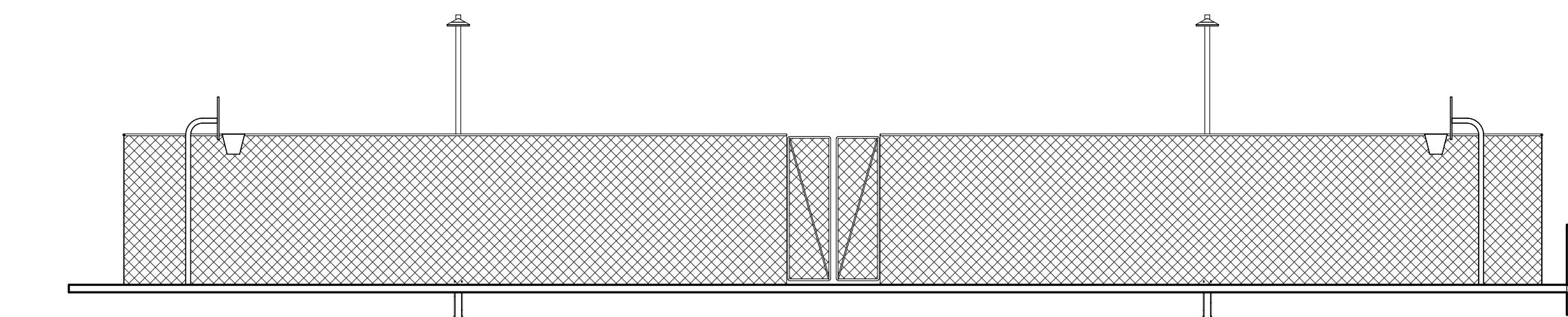


4 COURT FLOOR
1 1/2" = 1'-0"

1 Court W/ RetWall
3/16" = 1'-0"



2 Section 3
3/16" = 1'-0"



3 Section 6
1/8" = 1'-0"

PROJECT:	CEE:4850
DATE:	4/7/2023
DRAWN BY:	CJC
REVISION:	

THE UNIVERSITY OF IOWA
CIVIL AND ENVIRONMENTAL ENGINEERING
 4105 SEAMAN CENTER FOR THE
 ENGINEERING ARTS AND SCIENCES
 103 S. CAPITOL ST.
 IOWA CITY, IOWA 52242
 PHONE: 319.335.5647
 FAX: 319.335.5660
 EMAIL: civil-hawks@uiowa.edu



EDUCATIONAL - NOT
FOR CONSTRUCTION

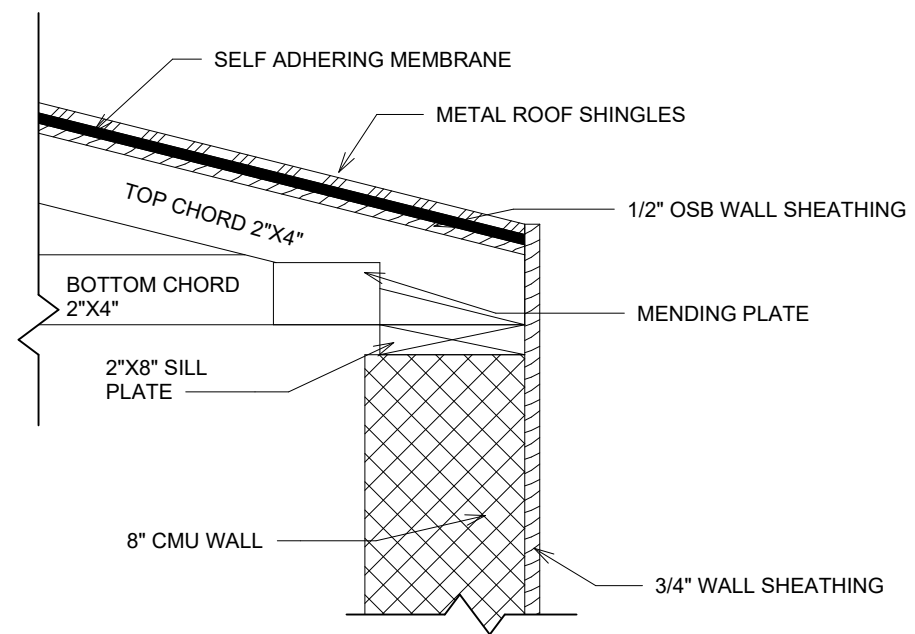
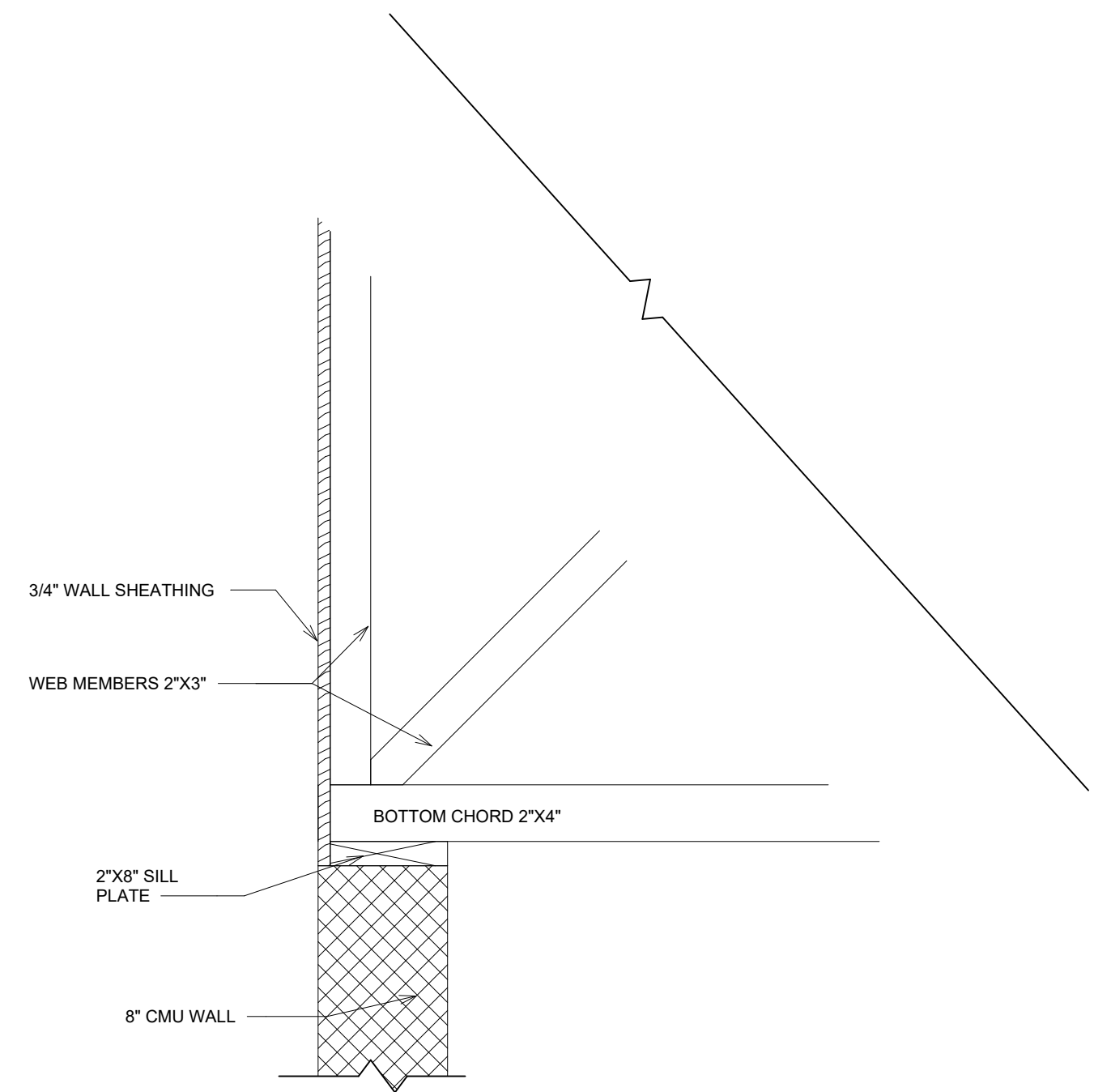
SIDNEY PARK EXPANSION

909 ILLINOIS ST.,
SIDNEY, IOWA, 51652

SHEET NAME
COURT
FLOOR PLAN

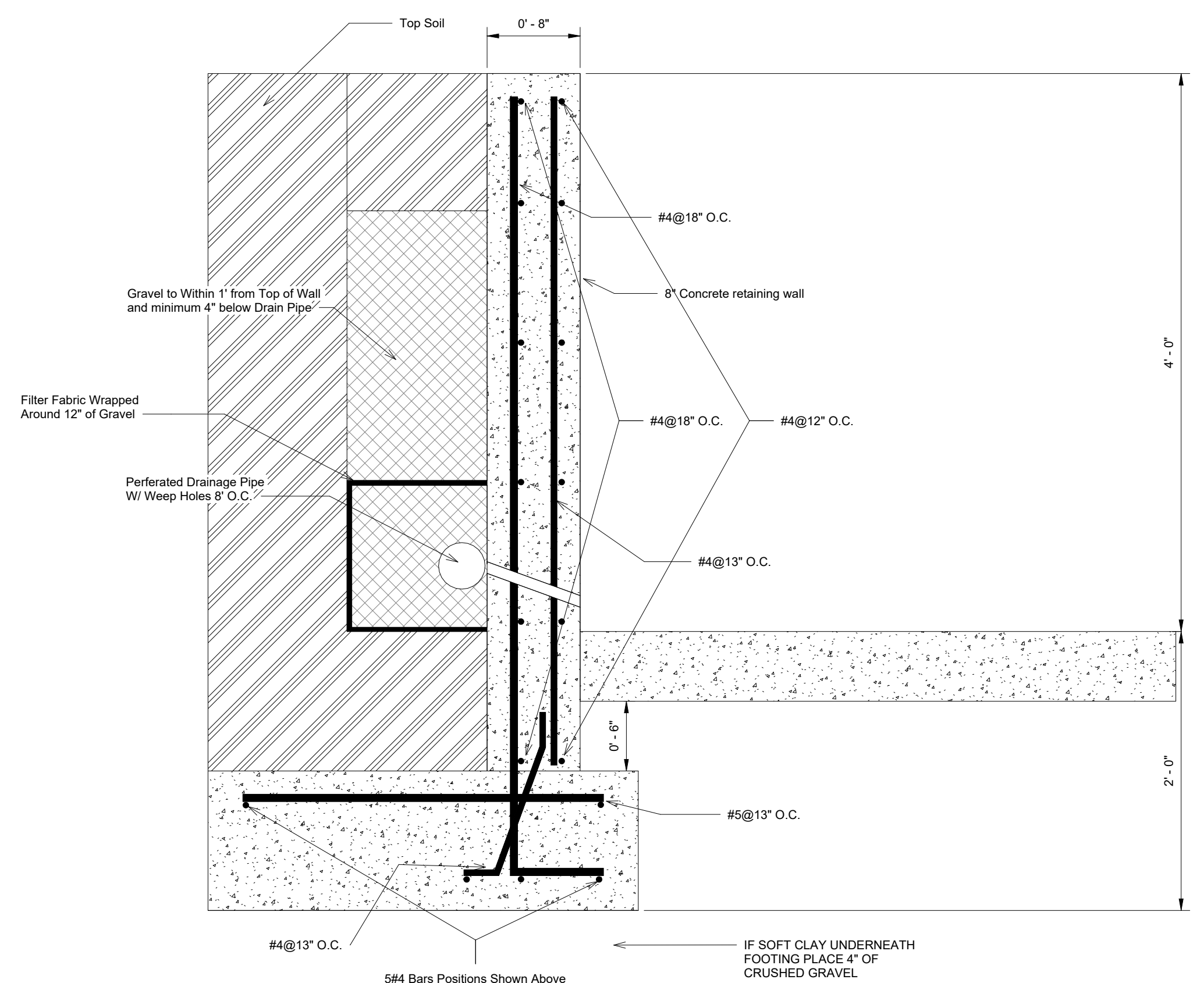
SHEET NO.

A2



1 ROOF CONNECTION DETAIL FRONT FACE
 1 1/2" = 1'-0"

2 ROOF CONNECTION DETAIL
 1 1/2" = 1'-0"



3 RETAINING WALL
 1 1/2" = 1'-0"

PROJECT: CEE4880
 DATE: 9/7/2022
 DRAWN BY: CJC
 REVISION:

THE UNIVERSITY OF IOWA
 CIVIL AND ENVIRONMENTAL ENGINEERING
 4105 SEAMANS CENTER FOR THE ENGINEERING ARTS AND SCIENCES
 103 S CAPITOL ST
 IOWA CITY, IOWA 52242
 PHONE: 319.335.5647
 FAX: 319.335.5660
 EMAIL: civil-hawks@uiowa.edu



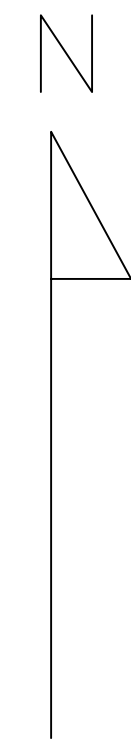
EDUCATIONAL - NOT FOR CONSTRUCTION

Sidney Park Expansion

909 ILLINOIS ST.
 SIDNEY, IOWA 51652

SHEET NAME
 Arch. Details

SHEET NO.
A3



PROJECT:	CEE-4850
DATE :	04/16/2023
DRAWN BY:	OF
REVISION:	

THE UNIVERSITY OF IOWA
CIVIL AND ENVIRONMENTAL ENGINEERING
 4105 SEAMANS CENTER FOR THE
 ENGINEERING ARTS AND SCIENCES
 103 S CAPITOL ST
 IOWA CITY, IOWA 52242
 PHONE: 319.335.5647
 FAX: 319.335.5660



EDUCATIONAL - NOT FOR CONSTRUCTION

SIDNEY PARK EXPANSION
 909 ILLINOIS STREET
 SIDNEY, IOWA

SHEET NAME
 SITE LAYOUT

SHEET NO.
C2.1



PROJECT:	CEE-4850
DATE :	04/16/2023
DRAWN BY:	OF
REVISION:	

THE UNIVERSITY OF IOWA
CIVIL AND ENVIRONMENTAL ENGINEERING
 4105 SEAMANS CENTER FOR THE
 ENGINEERING ARTS AND SCIENCES
 103 S CAPITOL ST
 IOWA CITY, IOWA 52242
 PHONE: 319.335.5647
 FAX: 319.335.5660

CEE Logo: BW - noText.tif

EDUCATIONAL - NOT FOR CONSTRUCTION

SIDNEY PARK EXPANSION
 909 ILLINOIS STREET
 SIDNEY, IOWA

SHEET NAME
 EXIST. GROUND GRADING PLAN

SHEET NO.
C3.1



PROJECT:	CEE-4850
DATE :	04/16/2023
DRAWN BY:	OF
REVISION:	

THE UNIVERSITY OF IOWA
CIVIL AND ENVIRONMENTAL ENGINEERING
 4105 SEAMANS CENTER FOR THE
 ENGINEERING ARTS AND SCIENCES
 103 S CAPITOL ST
 IOWA CITY, IOWA 52242
 PHONE: 319.335.5647
 FAX: 319.335.5660

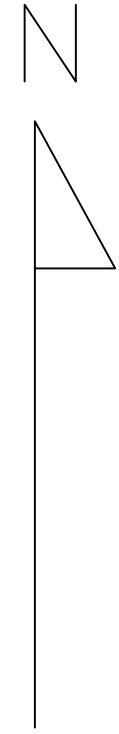
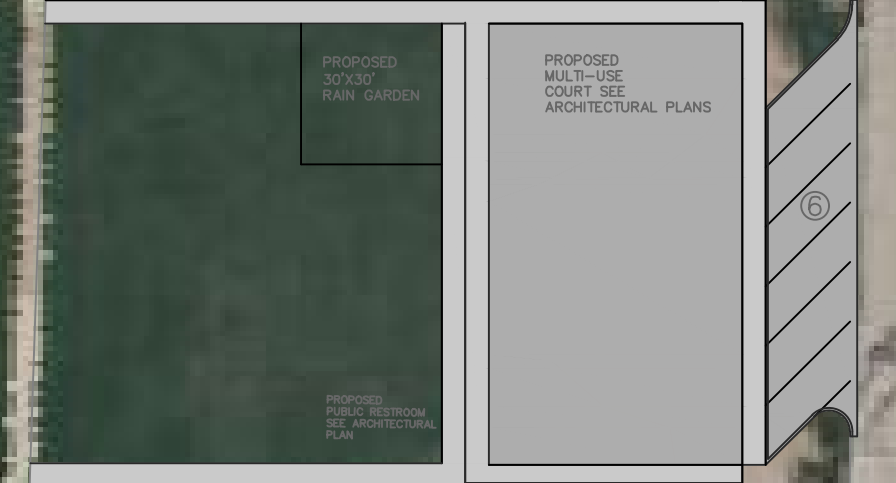
CEE Logo: BW - noText.tif

EDUCATIONAL - NOT FOR CONSTRUCTION

SIDNEY PARK EXPANSION
 909 ILLINOIS STREET
 SIDNEY, IOWA

SHEET NAME
 PROP.GROUND GRADING PLAN

SHEET NO.
C3.2



SHEET NO.
C4.1

SHEET NAME
TRAIL LAYOUT

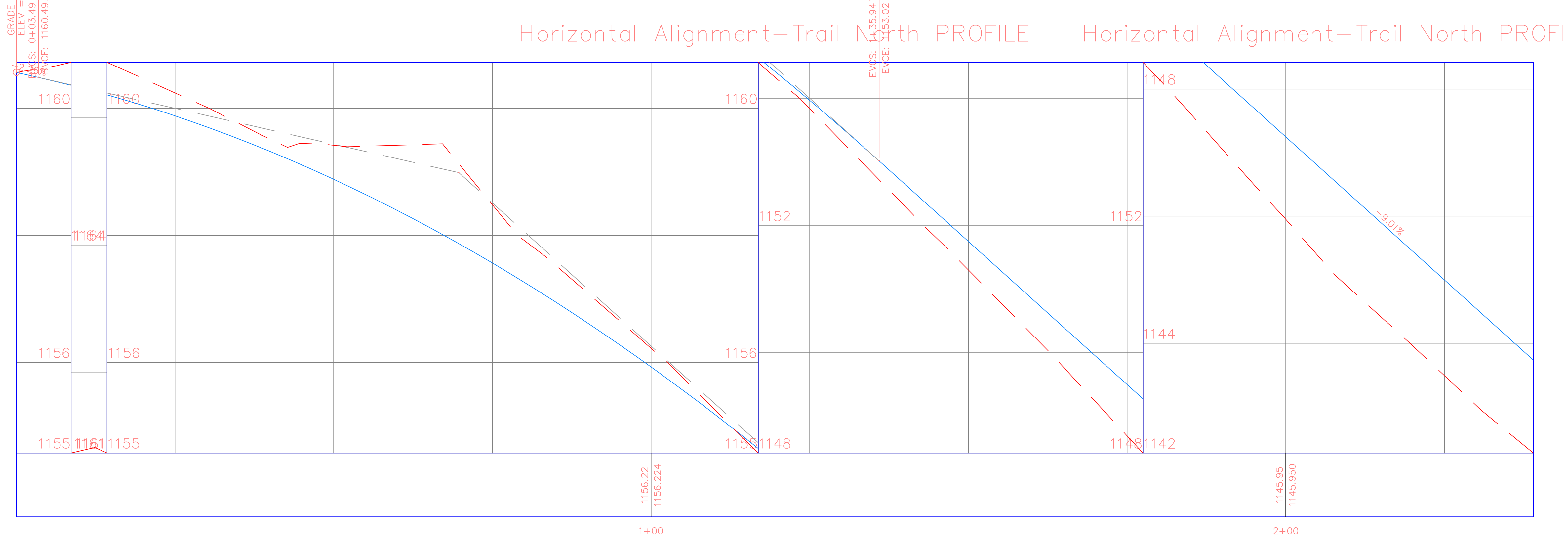
SIDNEY PARK EXPANSION
909 ILLINOIS STREET
SIDNEY, IOWA

EDUCATIONAL - NOT FOR CONSTRUCTION

CEE logo: BW - not text.tif

THE UNIVERSITY OF IOWA
CIVIL AND ENVIRONMENTAL ENGINEERING
4105 SEAMANS CENTER FOR THE
ENGINEERING ARTS AND SCIENCES
103 S CAPITOL ST
IOWA CITY, IOWA 52242
PHONE: 319.335.5647
FAX: 319.335.5660

PROJECT: CEE-4850
DATE : 04/17/2023
DRAWN BY: OF
REVISION:



PROJECT: CEE-4850
 DATE: 04/05/2023
 DRAWN BY: DM
 REVISION:

THE UNIVERSITY OF IOWA
CIVIL AND ENVIRONMENTAL ENGINEERING
 4105 SEAMANS CENTER FOR THE
 ENGINEERING ARTS AND SCIENCES
 103 S. CAPITOL ST
 IOWA CITY, IOWA 52242
 PHONE: 319.335.5647
 FAX: 319.335.5660
 EMAIL: civil-hawks@iowa.edu

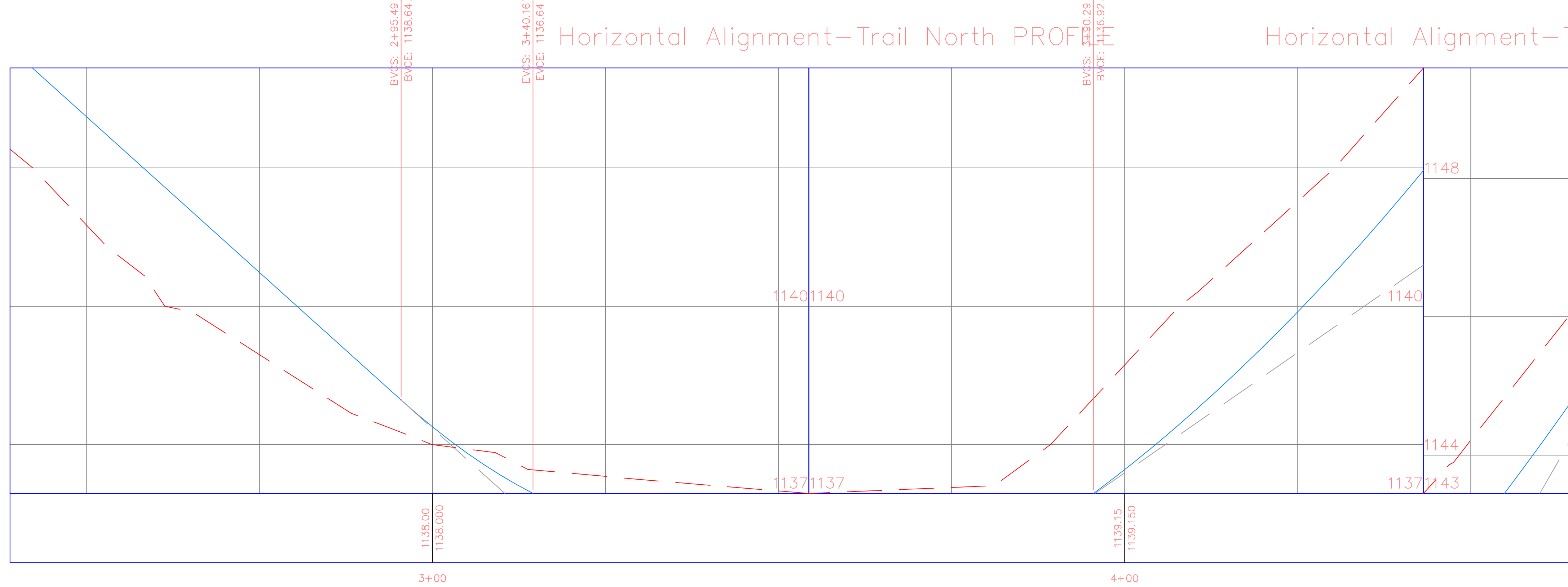
EDUCATIONAL - NOT FOR CONSTRUCTION

SIDNEY PARK EXPANSION

909 ILLINOIS STREET
 SIDNEY, IOWA

SHEET NAME
 TRAIL PLAN
 AND PROFILE

SHEET NO.
C4.2



PROJECT: CEE-4850
 DATE: 04/05/2023
 DRAWN BY: DM
 REVISION:

THE UNIVERSITY OF IOWA
CIVIL AND ENVIRONMENTAL ENGINEERING
 4105 SEAMANS CENTER FOR THE
 ENGINEERING ARTS AND SCIENCES
 103 S CAPITOL ST
 IOWA CITY, IOWA 52242
 PHONE: 319.335.5647
 FAX: 319.335.5660
 EMAIL: civil-hawks@iowa.edu

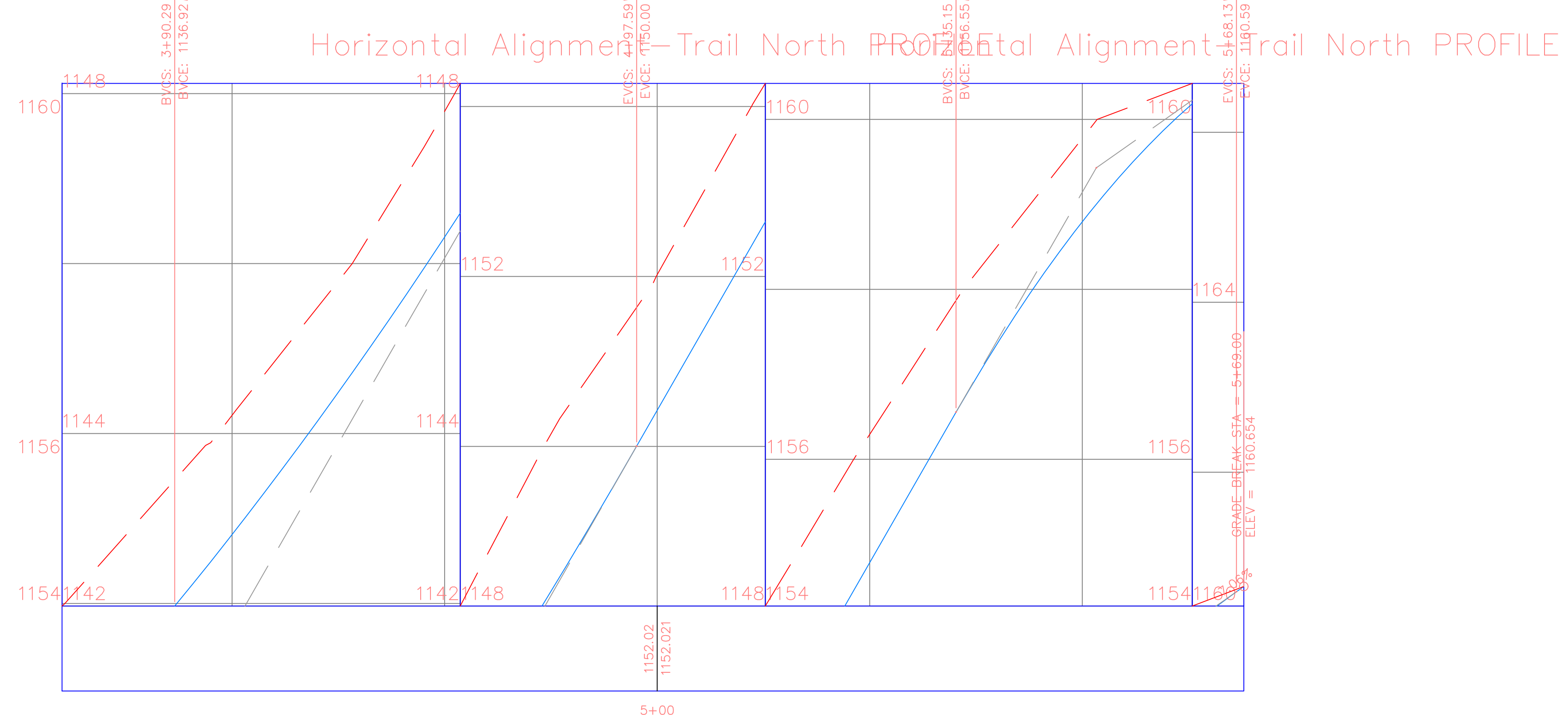
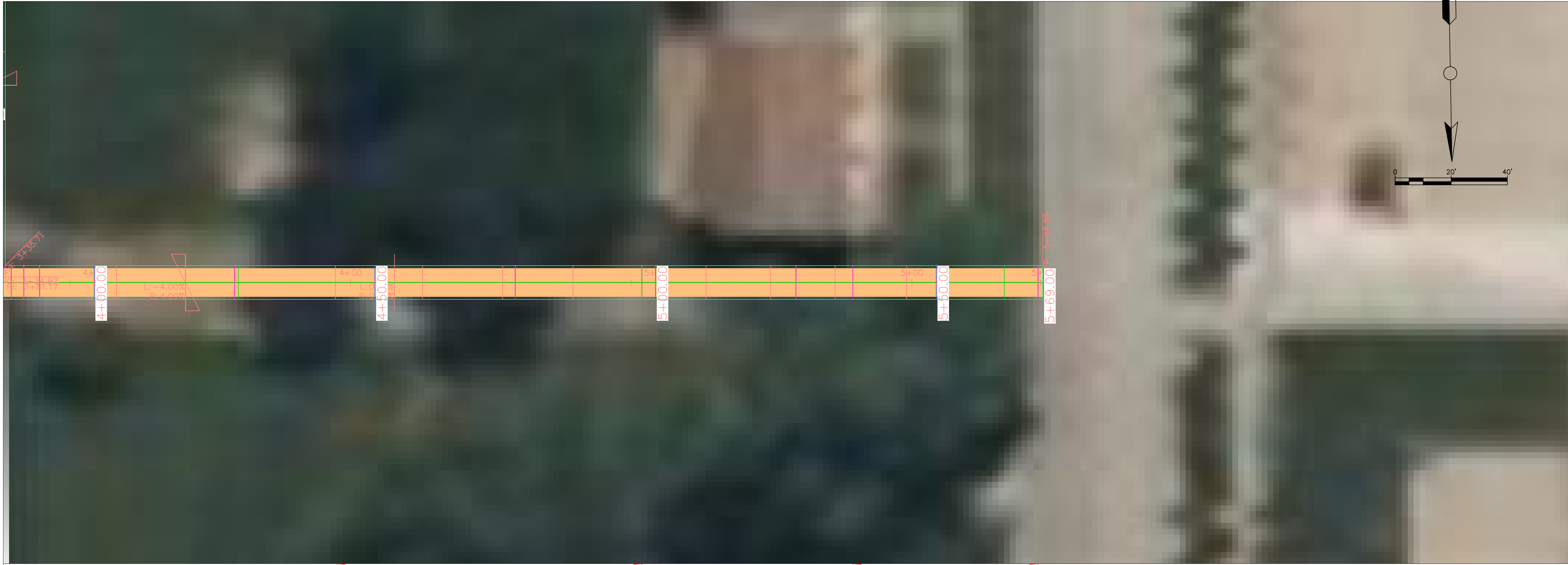
CEE logo: BW - noText.tif

EDUCATIONAL - NOT FOR CONSTRUCTION

SIDNEY PARK EXPANSION
 909 ILLINOIS STREET
 SIDNEY, IOWA

SHEET NAME
 TRAIL PLAN
 AND PROFILE

SHEET NO.
C4.3



PROJECT:	CEE-4850
DATE :	04/05/2023
DRAWN BY:	DM
REVISION:	

THE UNIVERSITY OF IOWA
CIVIL AND ENVIRONMENTAL ENGINEERING
 4105 SEAWANS CENTER FOR THE
 ENGINEERING ARTS AND SCIENCES
 103 S. CAPITOL ST
 IOWA CITY, IOWA 52242
 PHONE: 319.335.5647
 FAX: 319.335.5660
 EMAIL: civil-hawks@iowa.edu

CEE Logo: BV = noText.tif

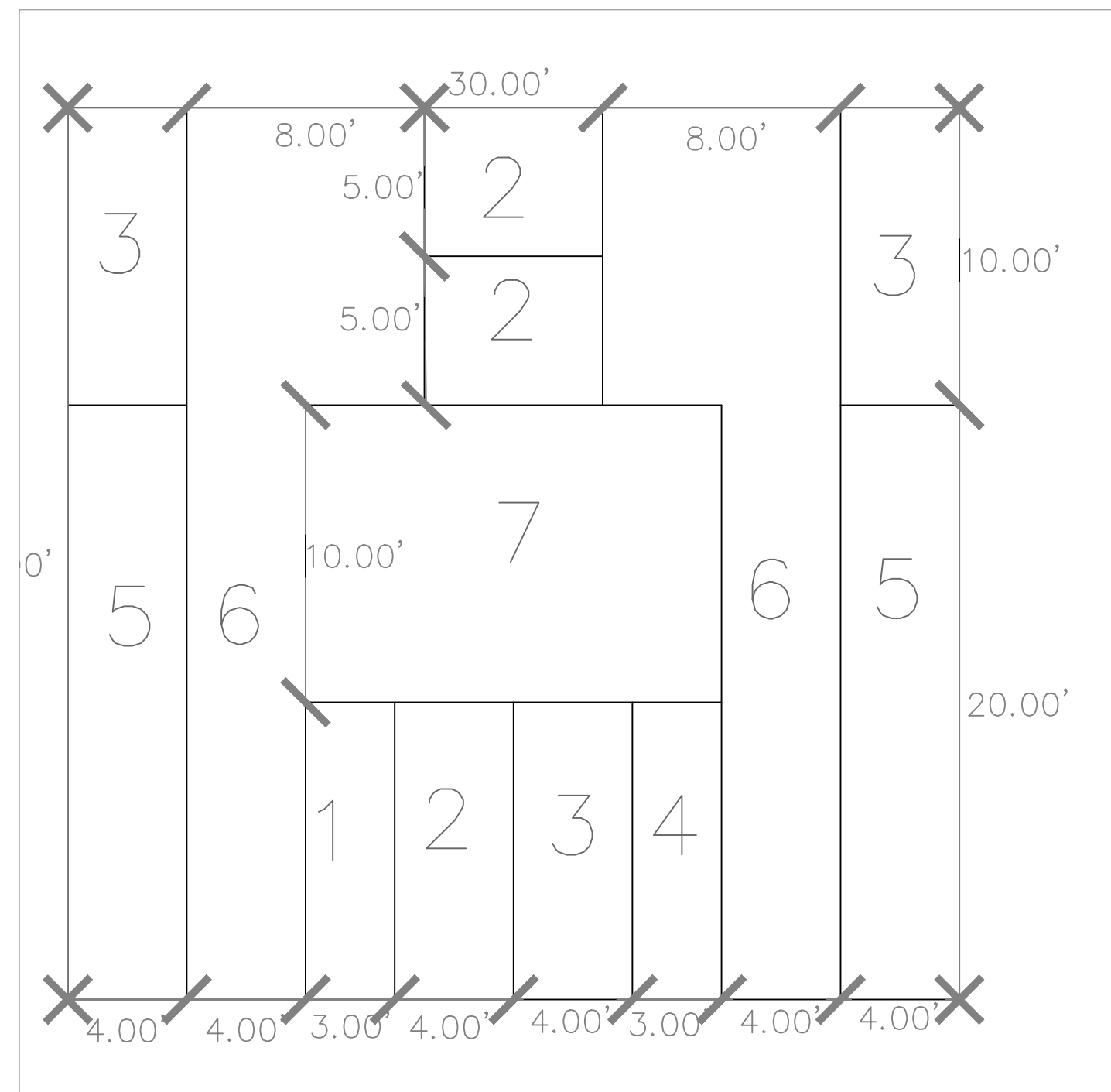
EDUCATIONAL - NOT FOR CONSTRUCTION

SIDNEY PARK EXPANSION

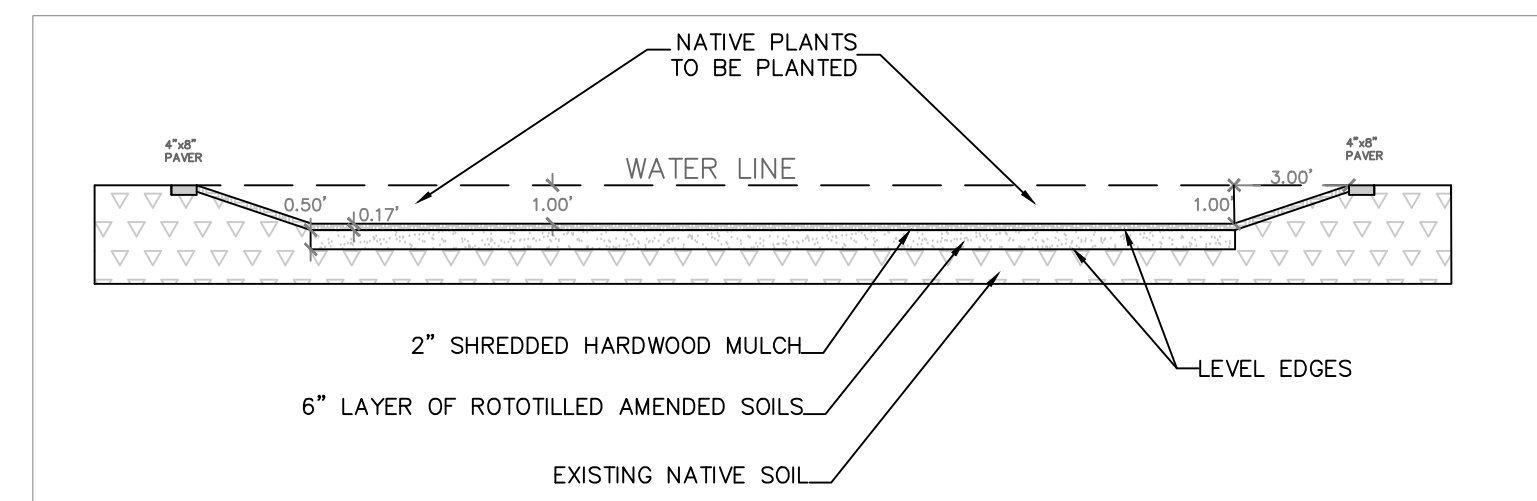
909 ILLINOIS STREET
 SIDNEY, IOWA

SHEET NAME
 TRAIL PLAN
 AND PROFILE

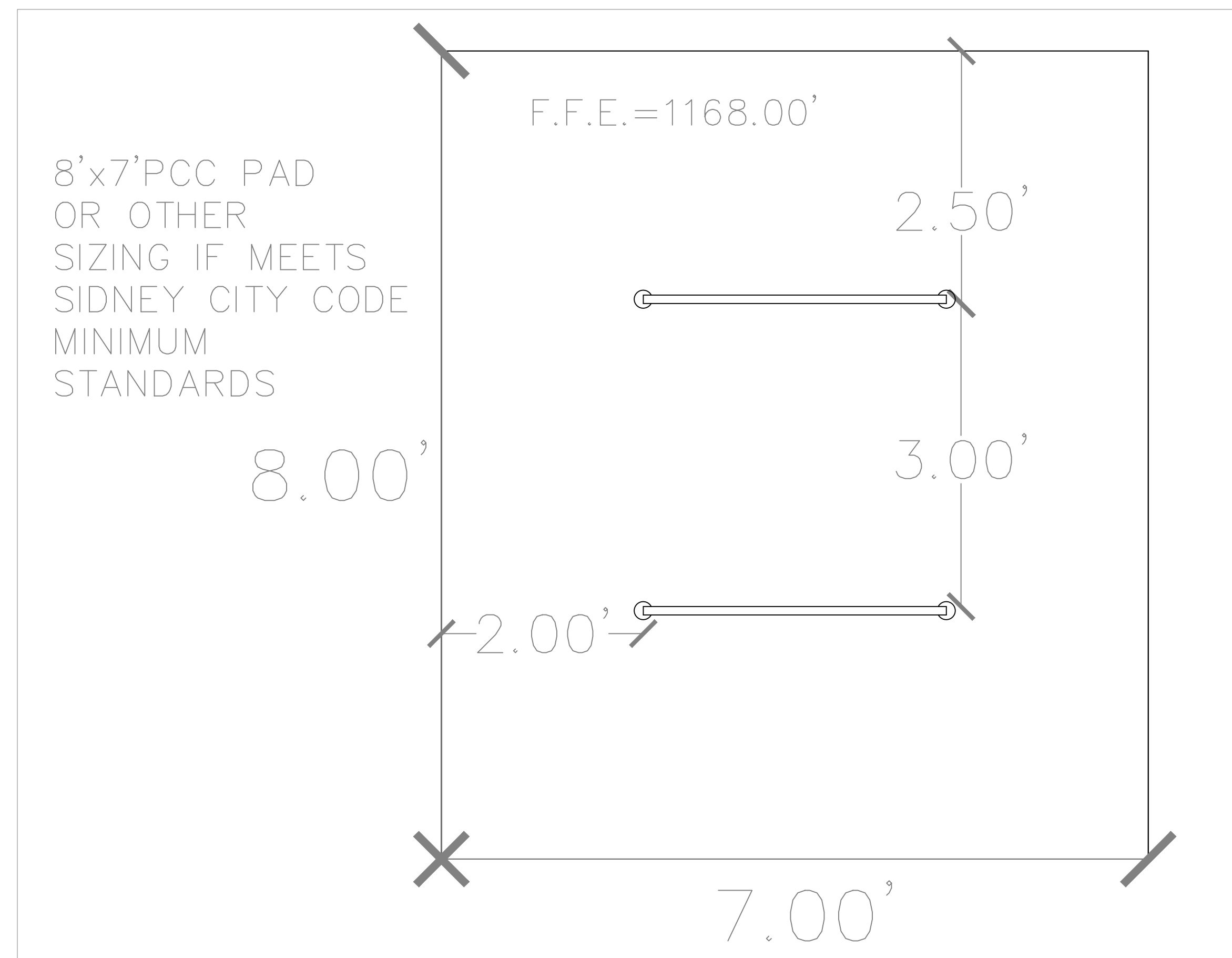
SHEET NO.
C4.4



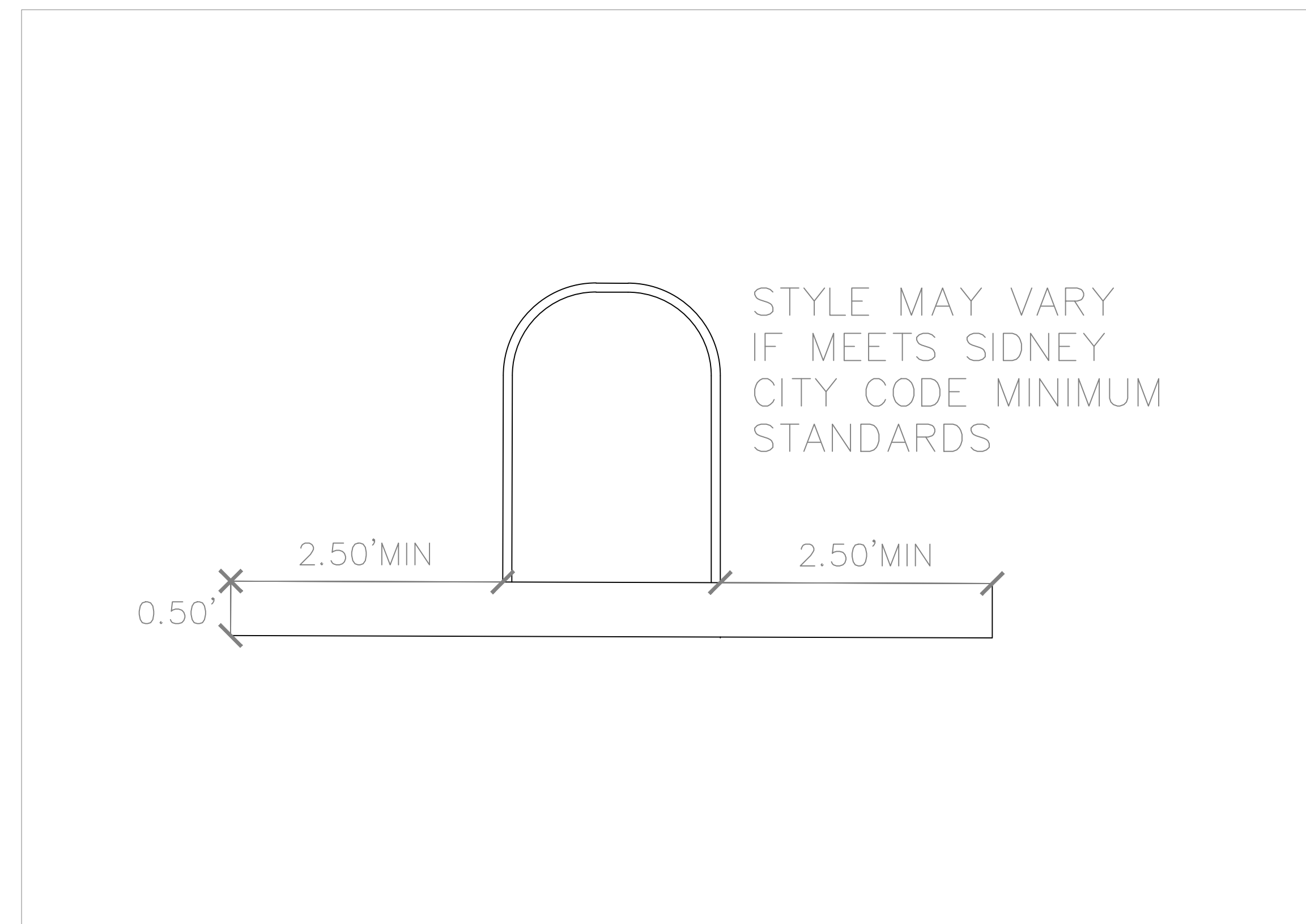
C5.1
1 RAIN GARDEN SOIL LAYOUT 1''-5'



C5.1
2 RAIN CROSS SECTION 1''-5'



C5.1
3 BIKE PARKING PAD 1''-1'



C5.1
4 BIKE PARKING CROSS SECTION 1''-1'

PROJECT:	CEE-4850
DATE :	04/05/2023
DRAWN BY:	OF
REVISION:	

THE UNIVERSITY OF IOWA
CIVIL AND ENVIRONMENTAL ENGINEERING
 4105 SEAMANS CENTER FOR THE
 ENGINEERING ARTS AND SCIENCES
 103 S CAPITOL ST
 IOWA CITY, IOWA 52242
 PHONE: 319.335.5647
 FAX: 319.335.5660



EDUCATIONAL - NOT FOR CONSTRUCTION

SIDNEY PARK EXPANSION
 909 ILLINOIS STREET
 SIDNEY, IOWA

SHEET NAME
 SITE DETAILS

SHEET NO.
C5.1