

SAFE ROUTE TO SCHOOL



ABBIEY TEUBEL
STEFAN KAPLAREVIC
ALEX KRAFT

"SIDNEY HOMETOWN
PRIDE WORKS TO
IMPROVE THE QUALITY
OF LIFE IN OUR
WONDERFUL SMALL
TOWN WITH THE HELP
OF MANY COMMUNITY
MEMBERS AND THE
KEEP IOWA BEAUTIFUL
PROGRAM"

Sidney *Hometown* *Pride*



Keep Iowa
Beautiful[®]

KEEP AMERICA BEAUTIFUL AFFILIATE

PRESENTATION OUTLINE

Project
Background

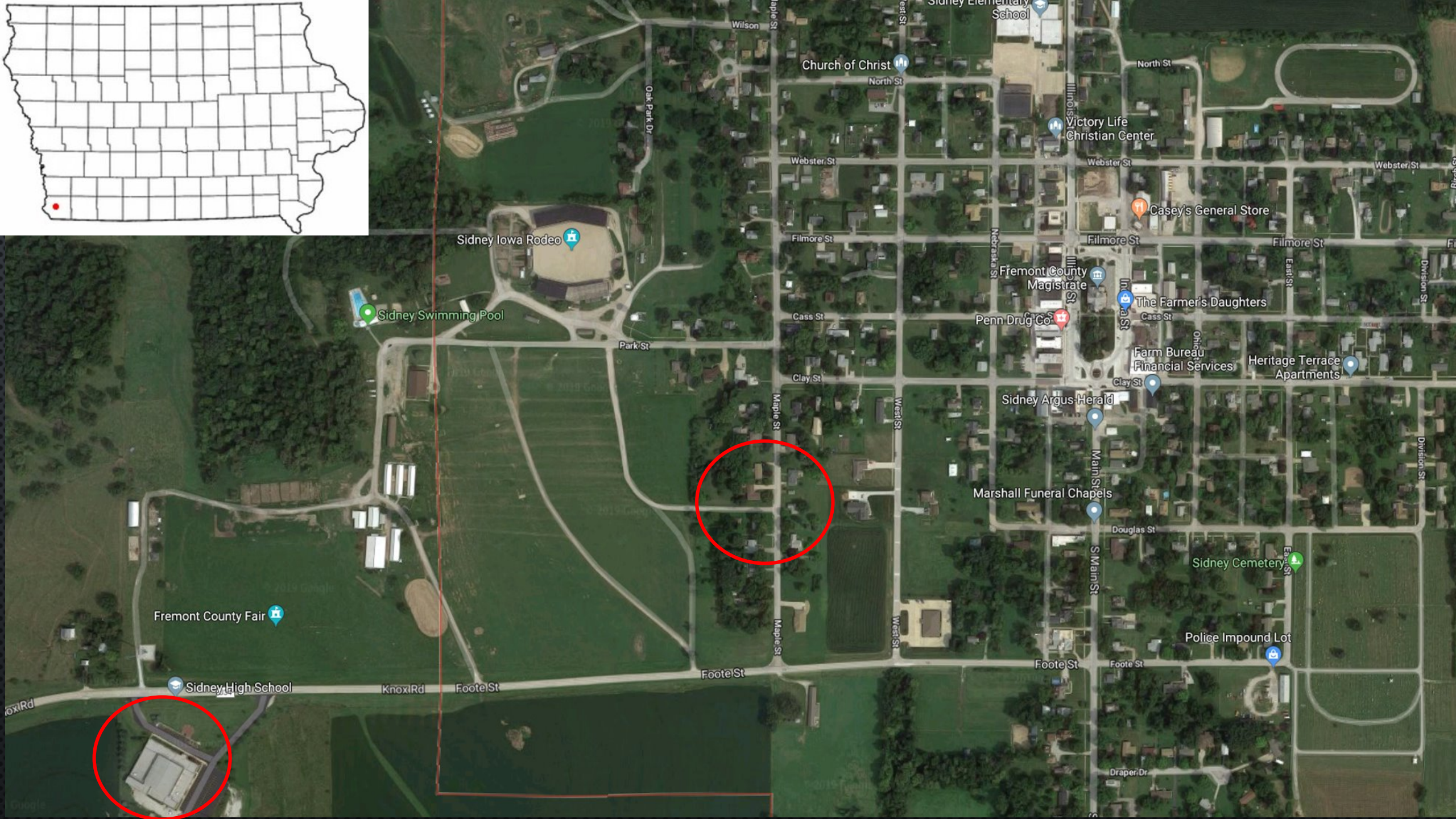
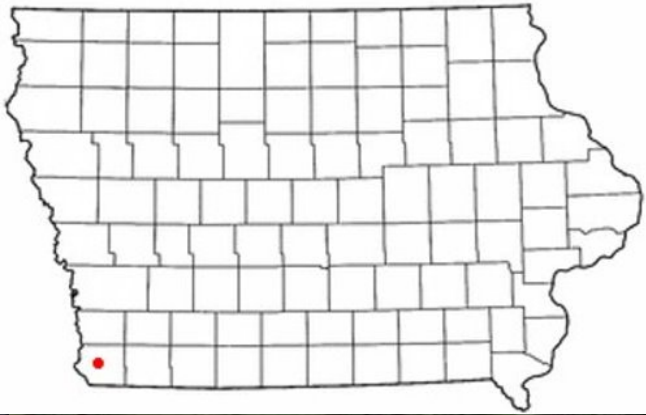
Project
Objective

Trail Design
Alternative 1

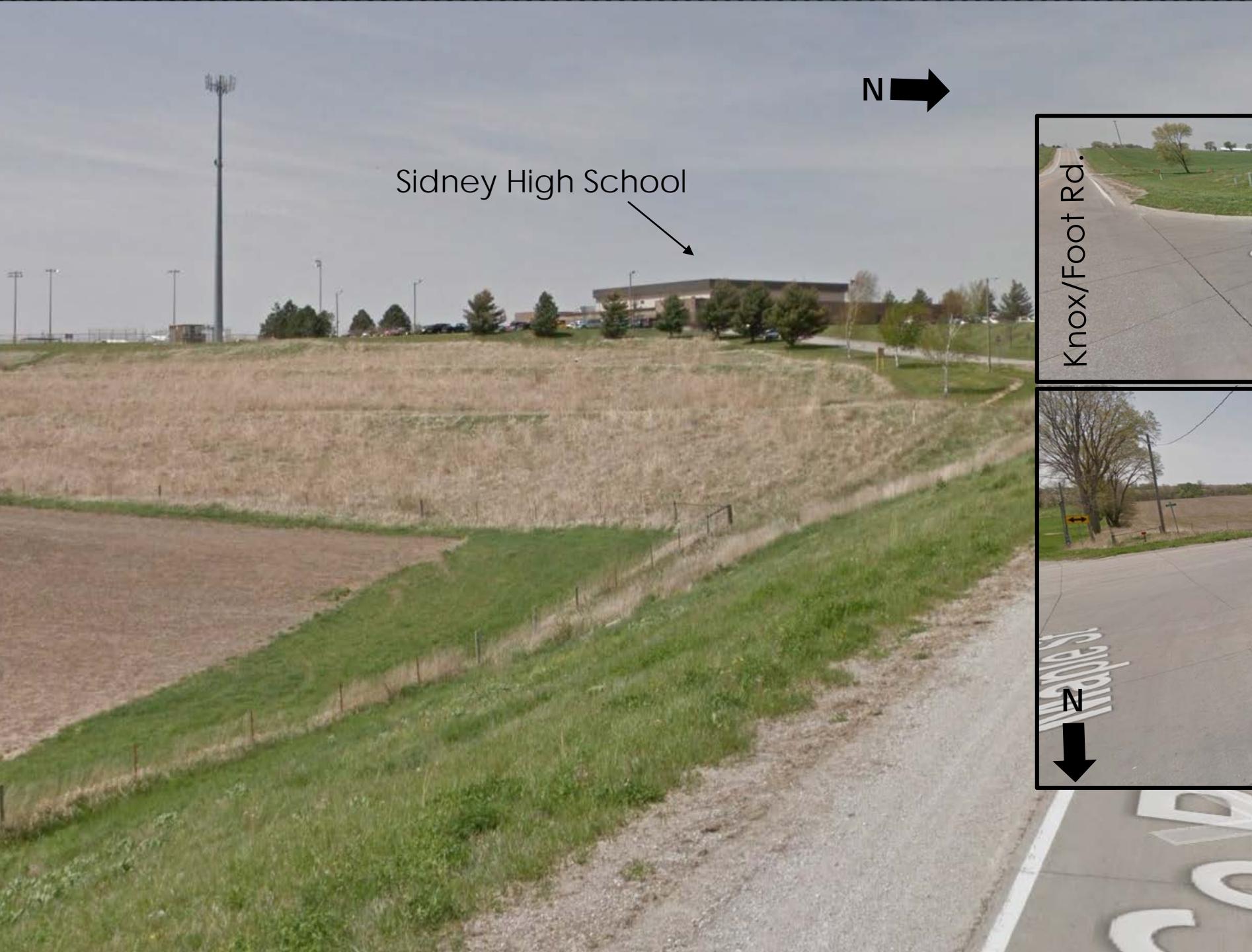
Trail Design
Alternative 2

Questions





INCLUSIVE TRAIL



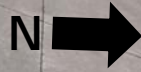
Sidney High School



Knox/Foot Rd.

Co Rd 10

Maple St.



Knox/Foot Rd.

N

STOP



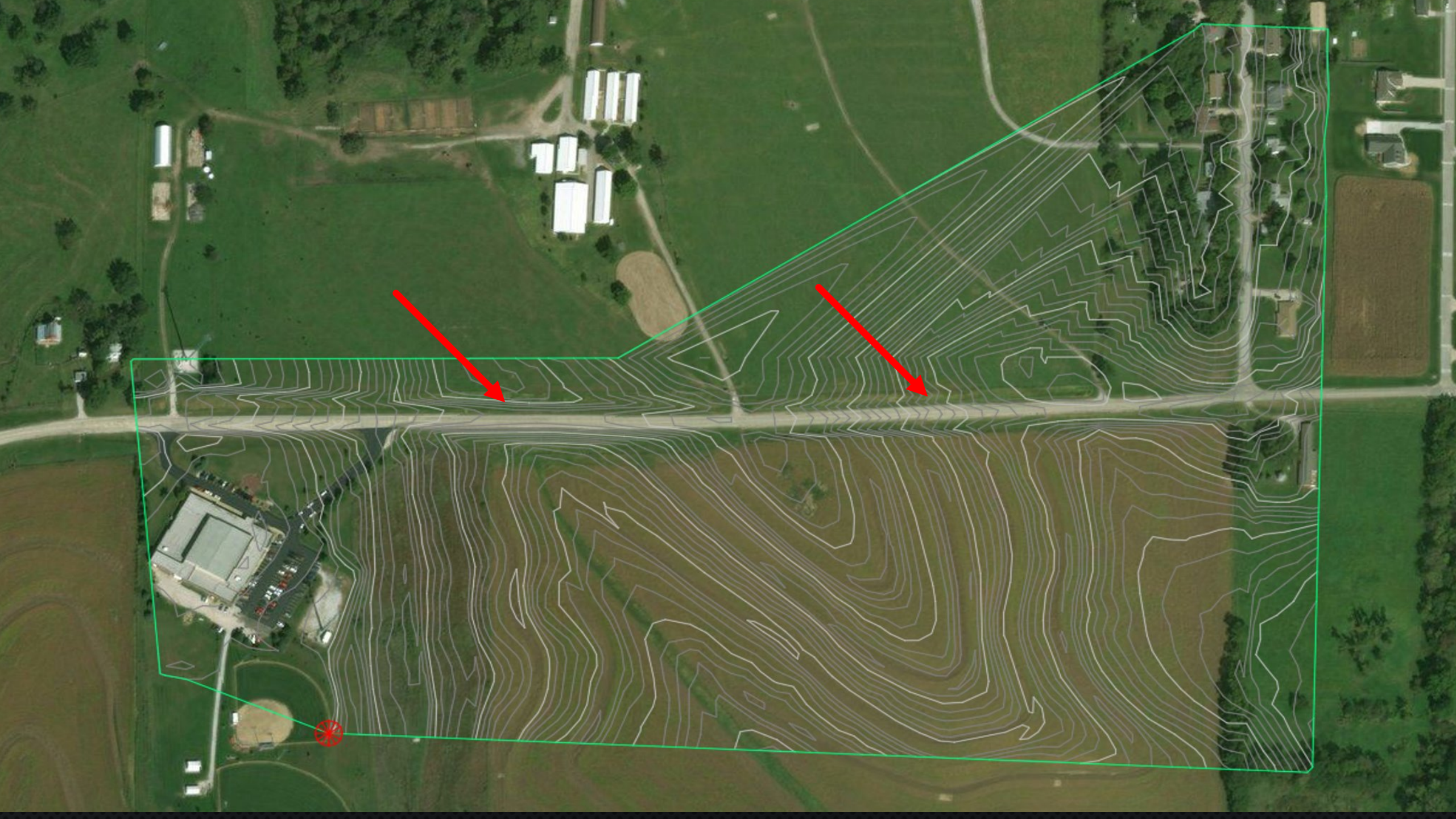
FUTURE DEVELOPMENT

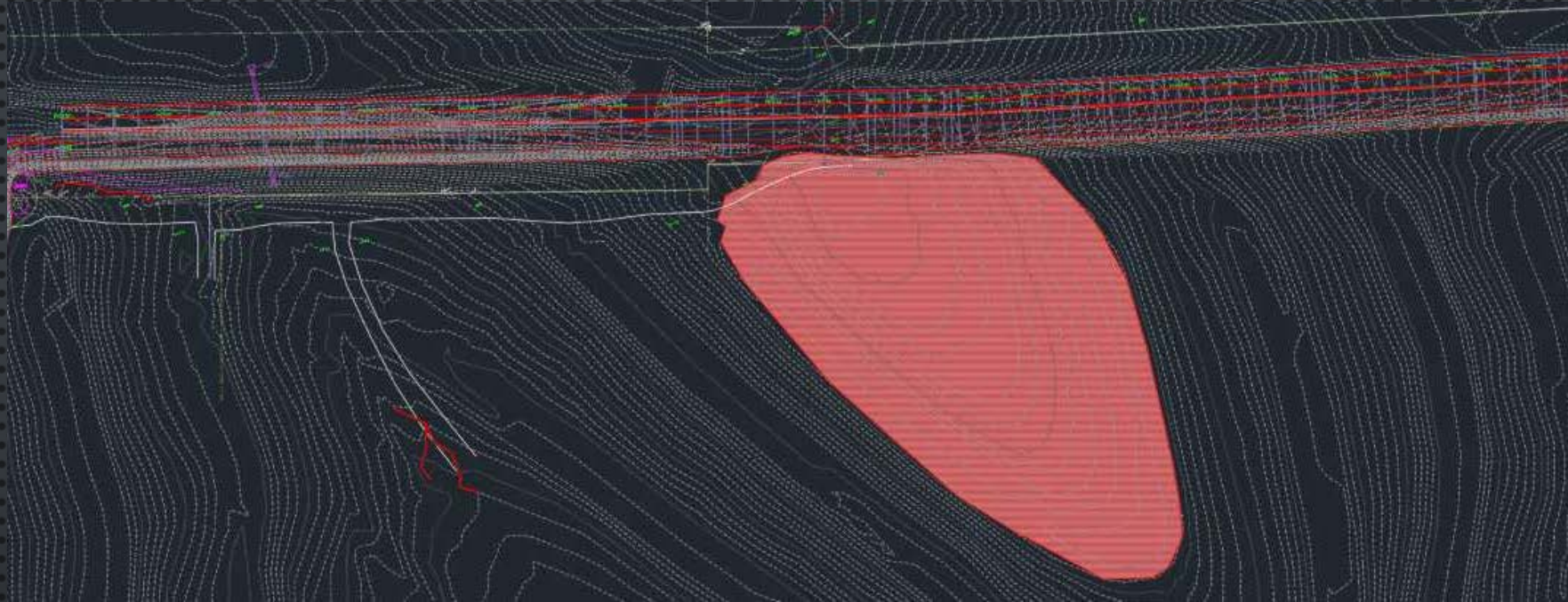


TRAIL DESIGN ALTERNATIVE 1

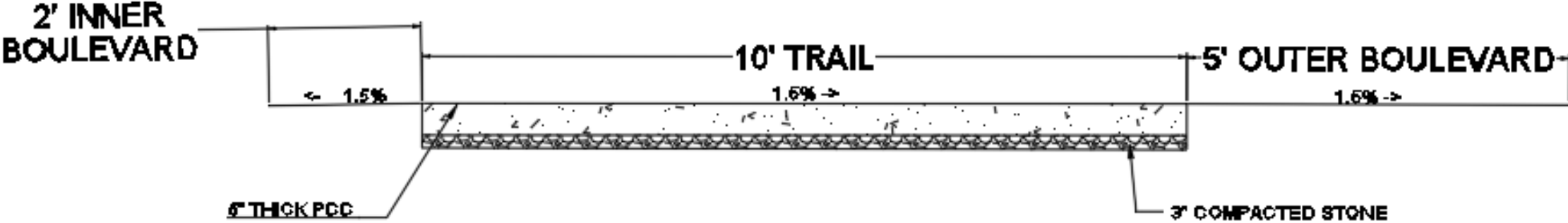








SCHOOL TRAIL CROSS SECTION

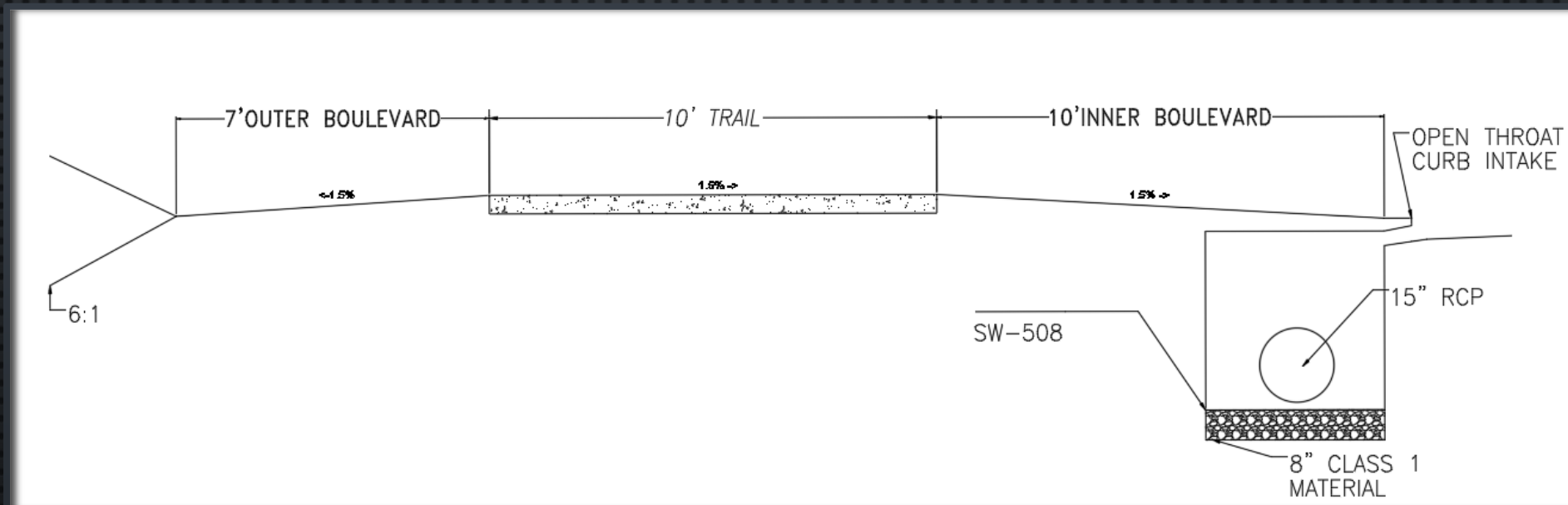
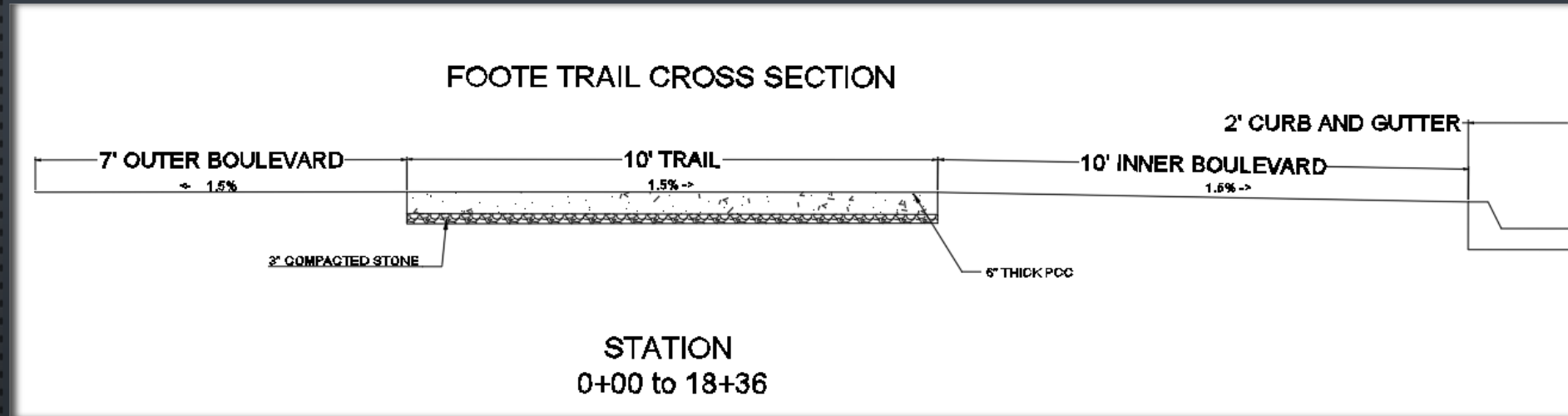


STATION
0+00 to 4+49

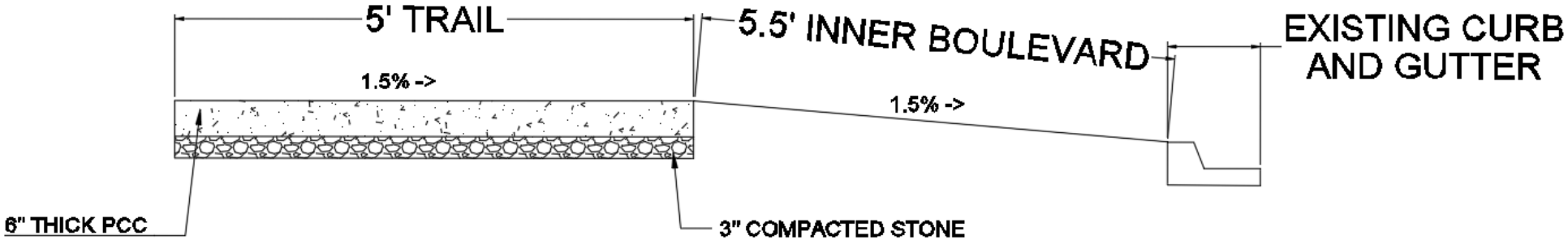


CROSS SECTION SCHOOL DESIGN

CROSS SECTION FOOTOTE DESIGN



MAPLE ST. CROSS SECTION



STATION
0+00 to 4+62

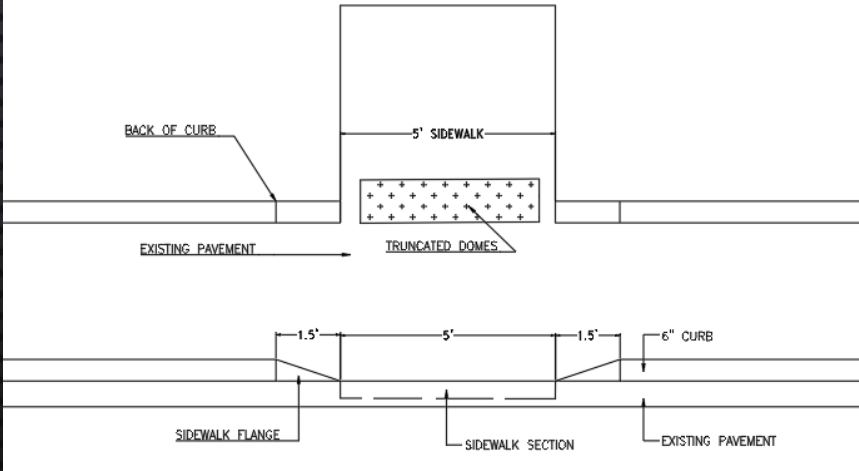


CROSS SECTION MAPLE ST

CROSSWALK



SIDEWALK AT CROSSING



TOTAL PROJECT COST ALTERNATIVE 1

EARTHWORK			
ITEM	UNITS USED	QUANTITY	\$ PER UNIT
Topsoil	CYS	5368.02	\$ 25.00
Fine Grading and Seeding	ACRE	0.96	\$ 1,181.62

CONCRETE			
ITEM	UNITS USED	QUANTITY	\$ PER UNIT
Portland cement concrete - Curb/Gutter	CYS	87.86	\$ 81.64
Portland cement concrete - Trail	SY	938.40	\$ 37.43

CROSS WALK			
ITEM	UNITS USED	QUANTITY	\$ PER UNIT
Stop Line Paint	STA	0.22	\$ 10.60
Cross Walk Paint	STA	1.20	\$ 10.60
Yield Sign Post	EA	2.00	\$ 98.12
Yield Sign	EA	2.00	\$ 18.23

STORM			
ITEM	UNITS USED	QUANTITY	\$ PER UNIT
Open Throat, Small Box Intake SW-507	EA	6.00	\$ 4,637.59
Storm Gravity Main 15"	LF	1225.00	\$ 54.27
Culvert CMP 24"	LF	1.00	\$ 45.51

CATEGORY	COST
EARTHWORK	\$136,000
CONCRETE	\$42,500
CROSSWALK	\$250
STORM	\$94,500
EASEMENTS	\$30,000
CONTINGENCIES	\$30,300
OVERHEAD / ADMINISTRATION	\$60,600

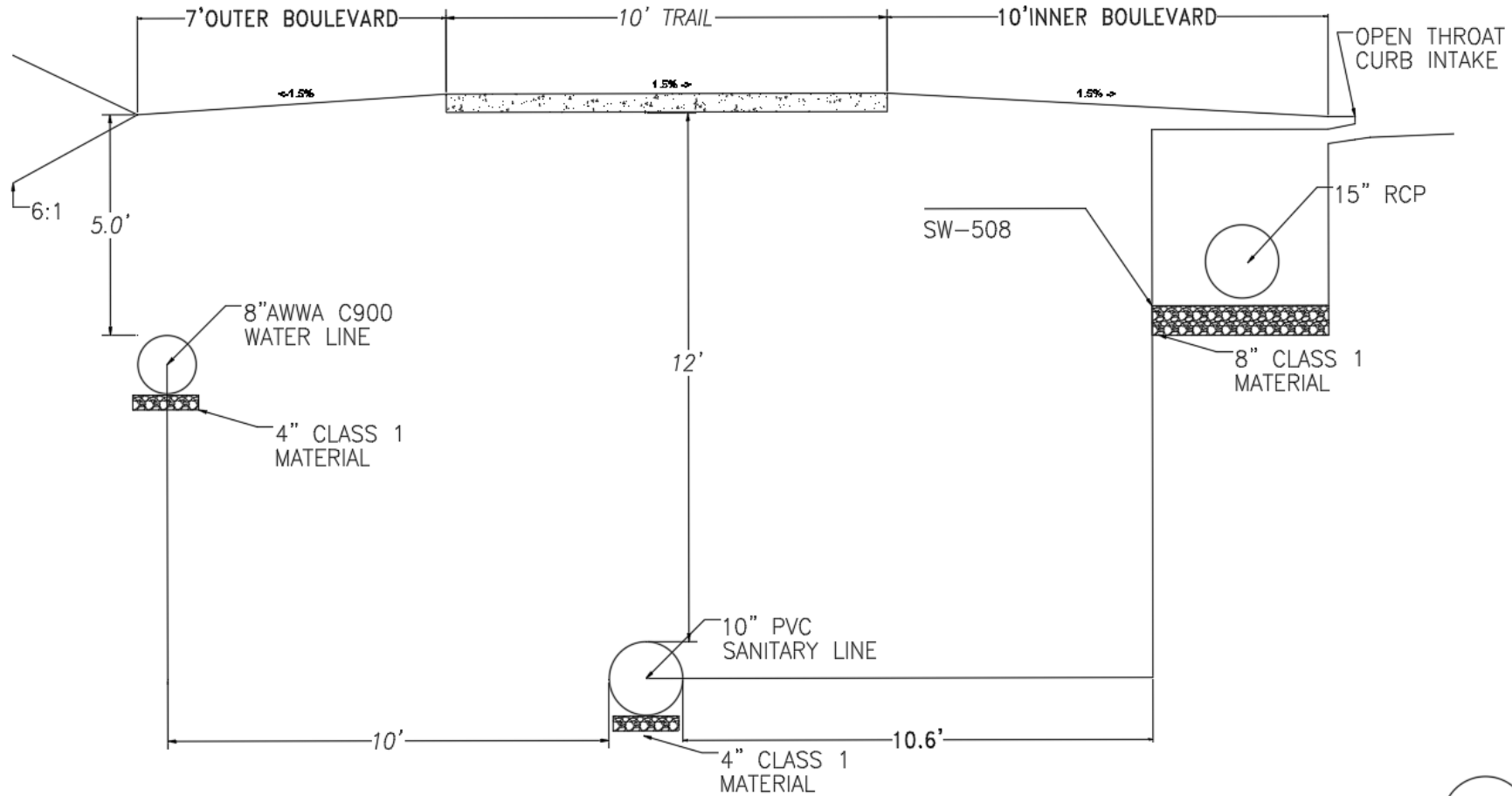
TOTAL PROJECT COST

\$393,900



TRAIL DESIGN ALTERNATIVE 2

UTILITY CROSS SECTION



NOT FINAL
PRELIMINARY
DATE: 07/10/2010



WATER MAIN

WATER			
ITEM	UNITS USED	QUANTITY	\$ PER UNIT
Standard Hydrant	EA	6.00	\$ 5,293.59
Tee 8" AWWA C900	EA	6.00	\$ 350.00
Bend 90 8" AWWA C900	EA	1.00	\$ 350.00
Bend 45 8" AWWA C900	EA	1.00	\$ 350.00
Pipe DR 18 8" AWWA C900	LF	2636.00	\$ 52.13
Butterfly Valve	EA	6.00	\$ 8,841.67

WATER MAIN COST
TOTAL \$225,000



SANITARY SEWER

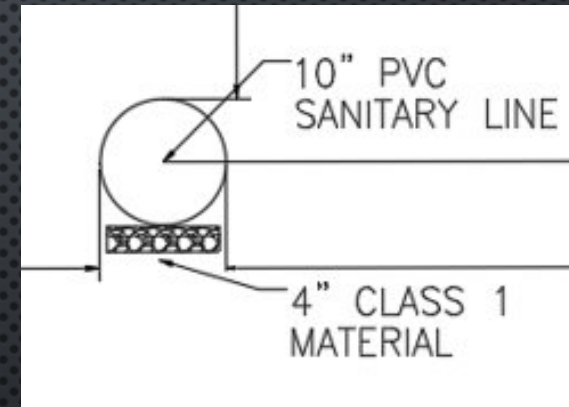


School: 21,000 gpd

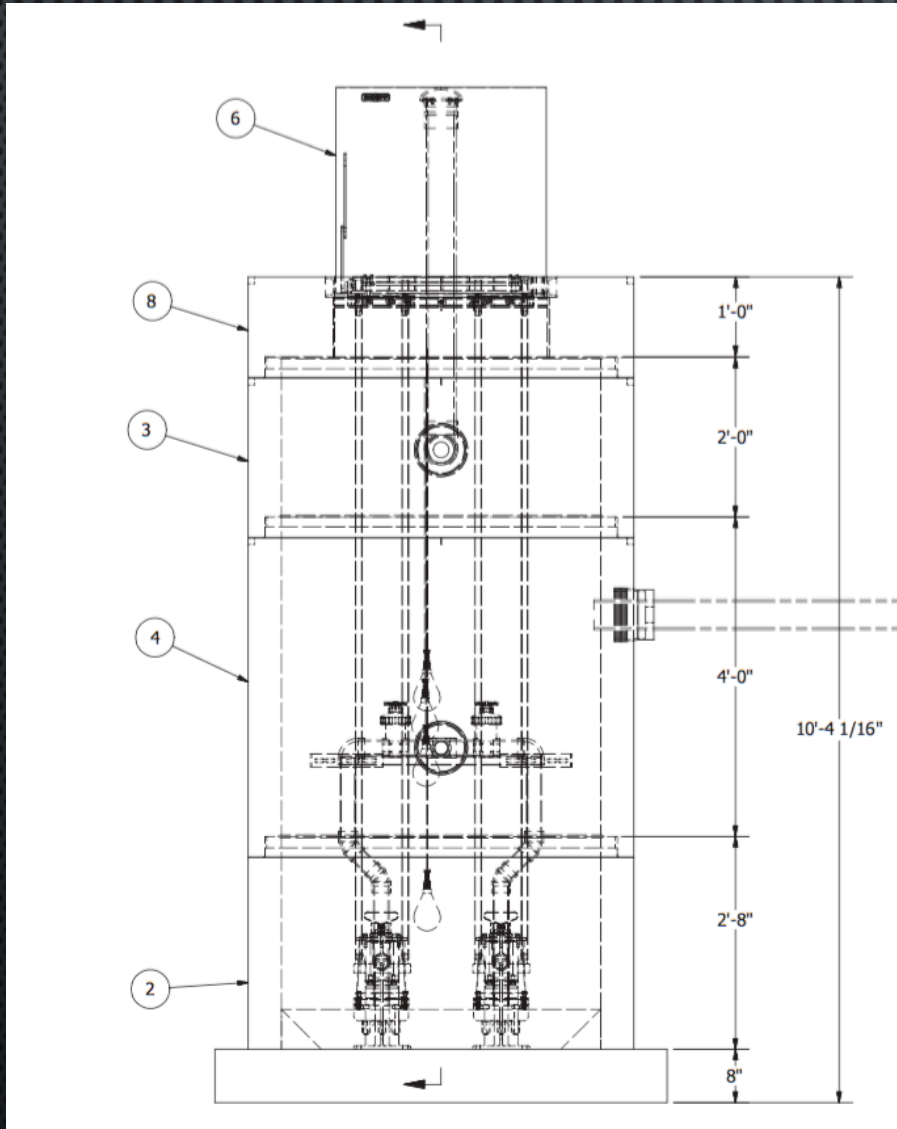


Combination 28,000 gpd

FLOW DETERMINATION AND SIZING



LIFT STATION



4' DIAMETER WET WELL
2" DISCHARGE PIPING
GOULDS PUMPS



SANITARY			
ITEM	UNITS USED	QUANTITY	\$ PER UNIT
Circular SSM 48" SW-301	EA	8.00	\$ 6,435.65
SAN Gravity Main 10" PVC	LF	1222.00	\$ 53.04
SAN Force Main 2" DIP	LF	364.00	\$ 40.00
Romtec 4' Wet Well Lift Station	EA	1.00	\$ 100,000.00

SANITARY SEWER
TOTAL \$231,000

TOTAL PROJECT COST ALTERNATIVE 2

ITEM	UNITS USED	QUANTITY	\$ PER UNIT	TOTAL \$
STORM				
Open Throat, Small Box Intake SW-507	EA	6.00	\$ 4,637.59	\$ 27,825.54
Storm Gravity Main 15"	LF	1225.00	\$ 54.27	\$ 66,480.75
Culvert CMP 24"	LF	1.00	\$ 45.51	\$ 45.51
CONCRETE				
Portland cement concrete - Curb/Gutter	CYS	87.86	\$ 81.64	\$ 7,172.89
Portland cement concrete - Trail	SY	938.40	\$ 37.43	\$ 35,124.31
EARTHWORK				
Topsoil, spread	CYS	5368.02	\$ 25.00	\$ 134,200.50
Fine Grading and Seeding	ACRE	0.96	\$ 1,181.62	\$ 1,134.36
Erosion Control	TON	16.07	\$ 38.24	\$ 614.33
CROSS WALK				
Stop Line Paint	STA	0.22	\$ 10.60	\$ 2.33
Cross Walk Paint	STA	1.20	\$ 10.60	\$ 12.72
Yield Sign Post	EA	2.00	\$ 98.12	\$ 196.24
Yield Sign	EA	2.00	\$ 18.23	\$ 36.46
WATER				
Standard Hydrant	EA	6.00	\$ 5,293.59	\$ 31,761.54
Tee 8" AWWA C900	EA	6.00	\$ 350.00	\$ 2,100.00
Bend 90 8" AWWA C900	EA	1.00	\$ 350.00	\$ 350.00
Bend 45 8" AWWA C900	EA	1.00	\$ 350.00	\$ 350.00
Pipe DR 18 8" AWWA C900	LF	2636.00	\$ 52.13	\$ 137,414.68
Butterfly Valve	EA	6.00	\$ 8,841.67	\$ 53,050.02
SANITARY				
Circular SSM 48" SW-301	EA	8.00	\$ 6,435.65	\$ 51,485.20
SAN Gravity Main 10" PVC	LF	1222.00	\$ 53.04	\$ 64,814.88
SAN Force Main 2" DIP	LF	364.00	\$ 40.00	\$ 14,560.00
Romtec 4' Wet Well Lift Station	EA	1.00	\$ 100,000.00	\$ 100,000.00

CATEGORY	COST
STORM	\$94,500
CONCRETE	\$42,500
EARTHWORK	\$136,000
CROSSWALK	\$250
WATER	\$225,000
SANITARY	\$231,000
EASEMENTS	\$30,000
CONTINGENCIES	\$75,900
OVERHEAD / ADMINISTRATION	\$151,800

TOTAL PROJECT COST

\$986,700

INCLUSIVE TRAIL



Sidney High School



Knox/Foot Rd.

Co Rd.

Maple St.



Knox/Foot Rd.

Maple St

STOP

FUTURE DEVELOPMENT





QUESTIONS?