

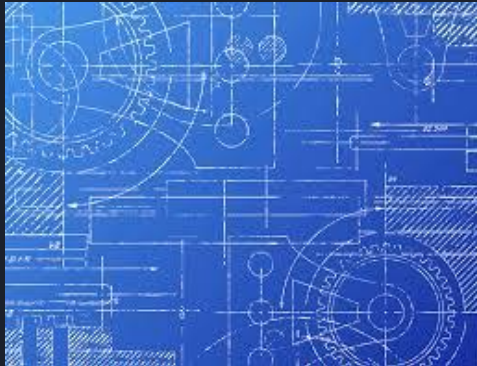


Sawmill Museum Amphitheater

Mike Silfugarian, Mike Rangel

Presentation Outline

- Project
- Project Inspiration
- Project Impact
- Project Components
- Component Prices
- Final Cost
- Conclusion



Mass seating



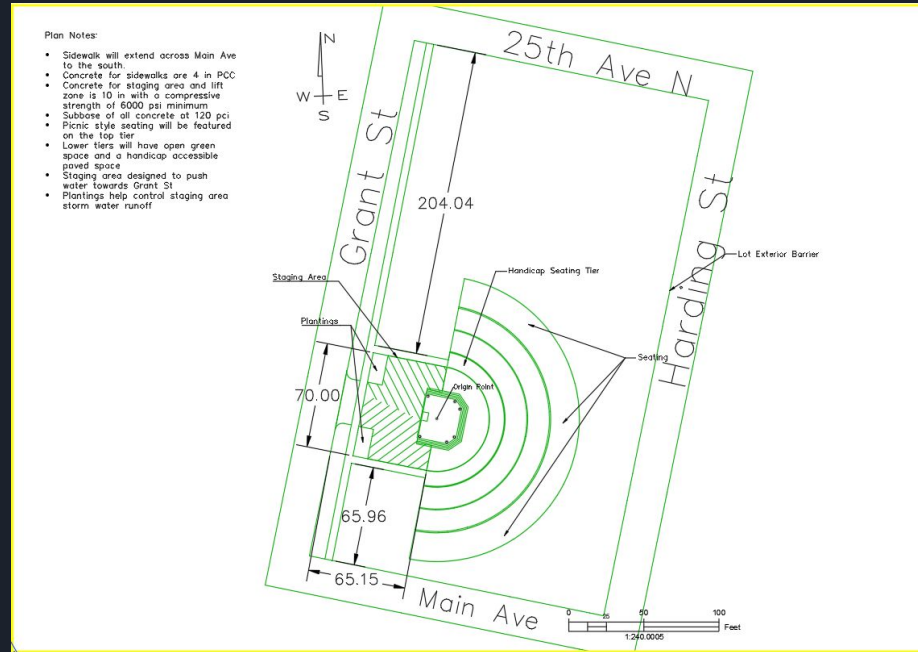
Canadian Pacific Railway Holiday Train

Lumberjack Festival



Community

Overall View, Location



Project Inspiration

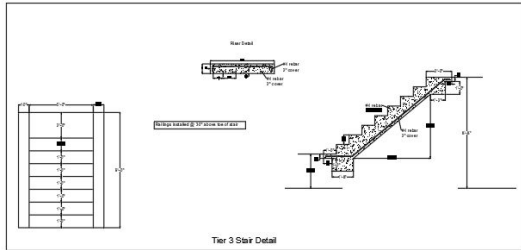
IMU Amphitheater



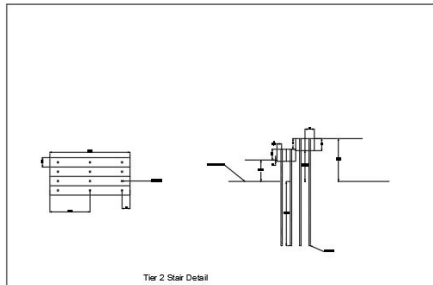
Two Brothers Roundhouse



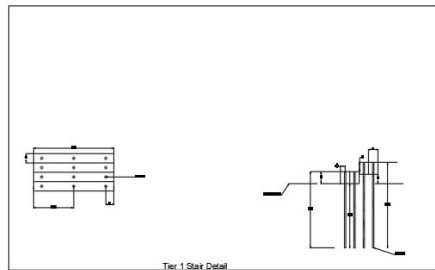
Santa Clarita Valley Amphitheater



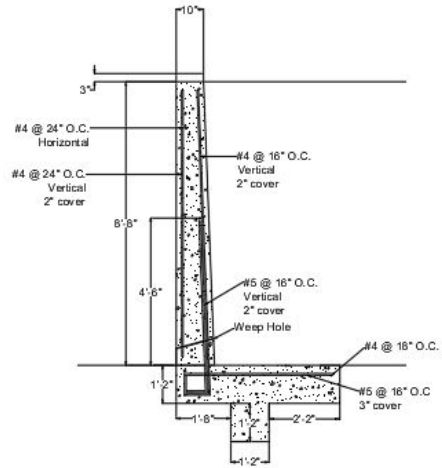
Tier 3 Stair Detail



Tier 2 Stair Detail



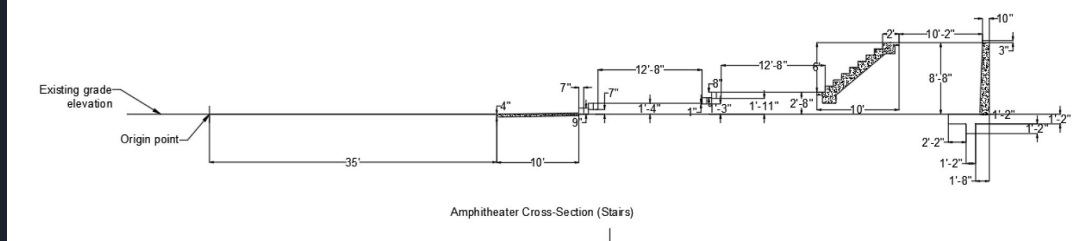
Tier 1 Stair Detail



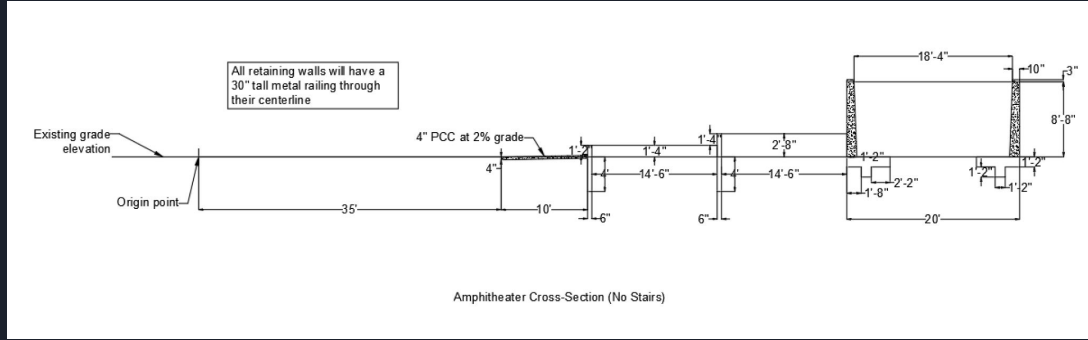
Retaining Wall Detail

The third tier will be backfilled with Class A stone, with 1' of topsoil as the top layer.

Weep Hole:
 1/2" PVC pipe @ 15 degree angle
 Spaced 24" O.C. on outer wal only



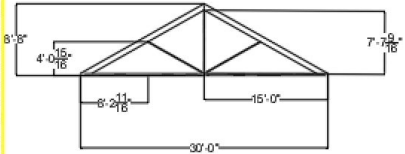
Amphitheater Cross-Section (Stairs)



Amphitheater Cross-Section (No Stairs)

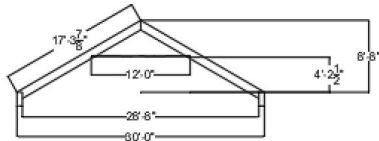
	Quantity	Unit	Price/Unit	Total Price
Wood				
6" piles	9124	Board ft.	\$ 8.20	\$ 74,816.80
Railroad Ties	840	Board ft.	\$ 8.20	\$ 6,888.00
Total	9964			\$ 81,704.80
Reinforced concrete				
Retaining walls	355	CY	\$ 367.00	\$ 130,285.00
Stairs	12.6	CY	\$ 367.00	\$ 4,624.20
Total	367.6			\$ 134,909.20
Earth				
Grade 30 crushed stone	1505	CY	\$ 53.89	\$ 81,104.45
Topsoil	624	CY	\$ 18.00	\$ 11,232.00
Total				\$ 92,336.45
Other				
#8 rebar (for railroad ties)	729	lb.	\$ 1.23	\$ 896.67
Concrete (handicap area)	139.7	SY	\$ 50.00	\$ 6,985.00
Grand Total				\$ 316,832.12

Pavilion



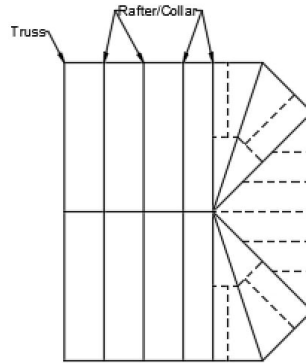
Pavilion Truss

Member Dimensions:
 Top Chord: 2"x8"
 Bottom: 2"x3"
 Diagonals: 1"x3"

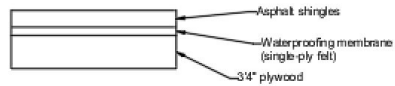


Pavilion Rafter/Collar

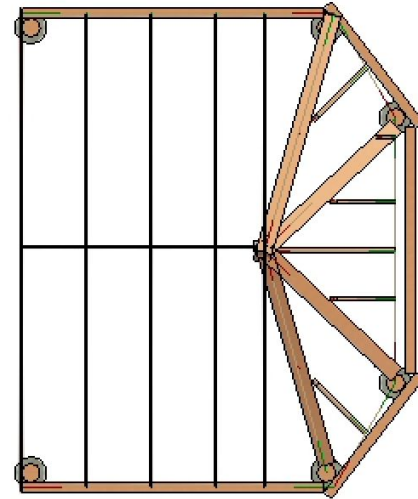
Member Dimensions:
 Girder: 6"x20"
 Rafter: 12"x12"
 Collar: 3"x1"

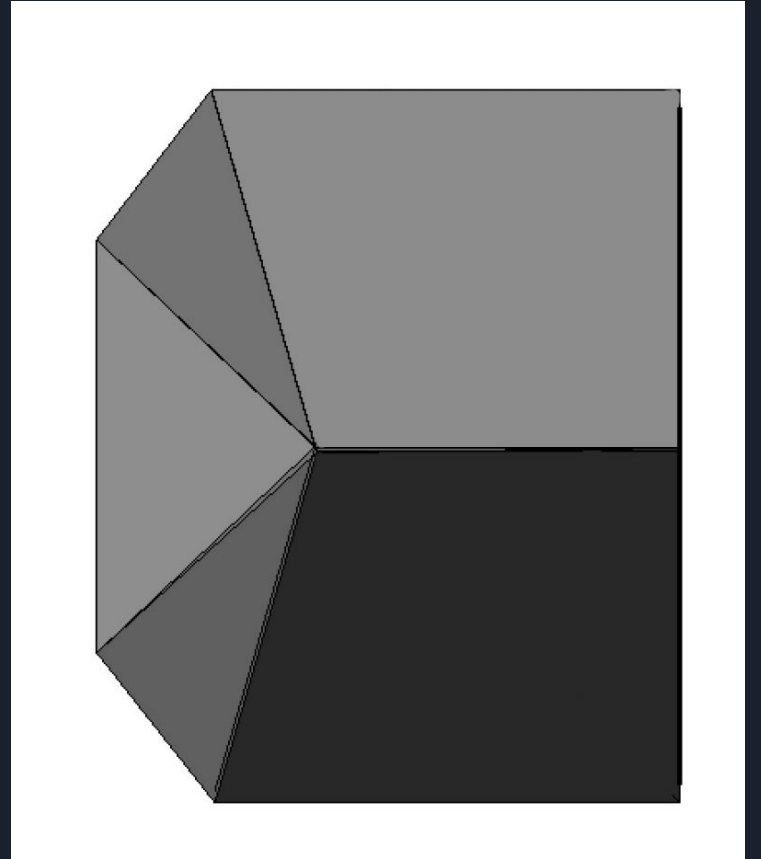
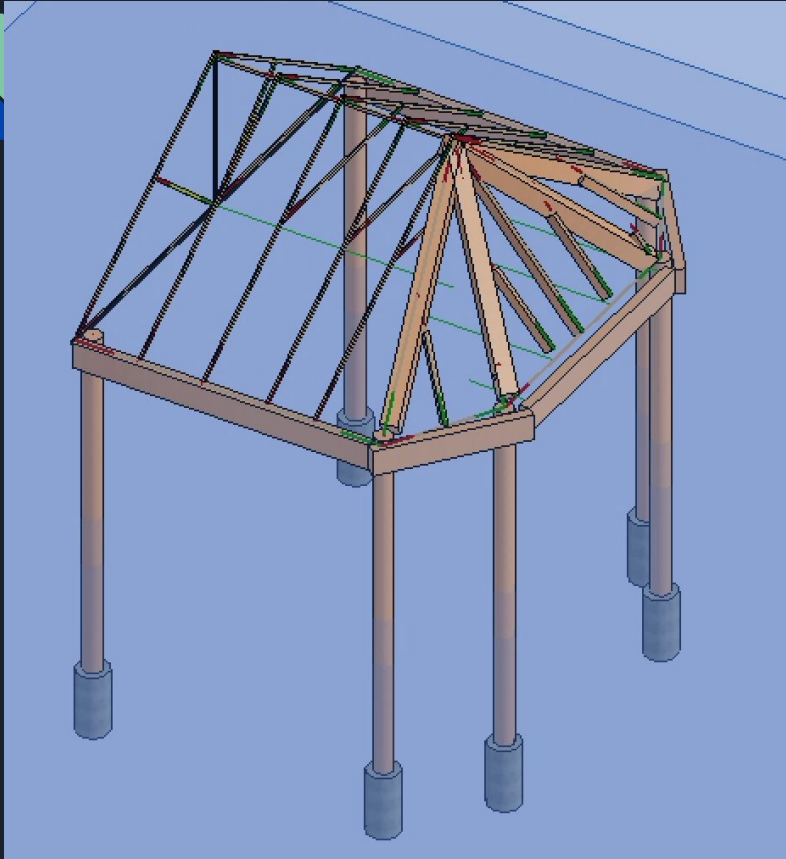


Pavilion Framing Layout



Roof Sheathing Profile

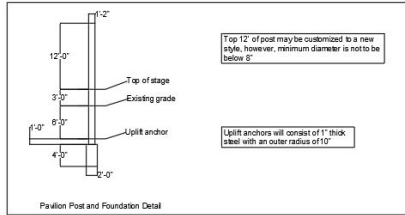




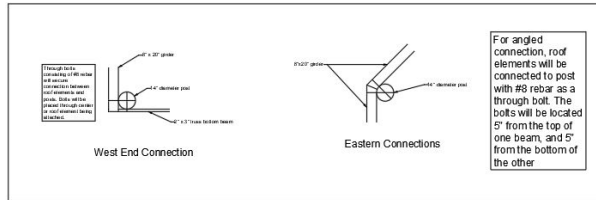


Sample Column Profile

Minimum column diameter at any point is 8"



Pavilion Post and Foundation Detail



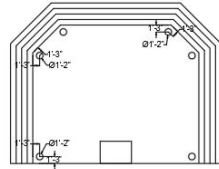
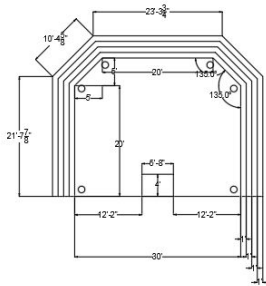
West End Connection

Eastern Connections

	Quantity	Unit	Price/Unit	Total Price
Wood				
14" Diameter	1693.4	Board ft.	\$ 8.20	\$ 13,885.88
1x3	5.8	Board ft.	\$ 8.20	\$ 47.56
2x8	46	Board ft.	\$ 8.20	\$ 377.20
2x3	15	Board ft.	\$ 8.20	\$ 123.00
1x12	48	Board ft.	\$ 8.20	\$ 393.60
8x12	1109	Board ft.	\$ 8.20	\$ 9,093.80
12x14	969	Board ft.	\$ 8.20	\$ 7,945.80
4x8	115.5	Board ft.	\$ 8.20	\$ 947.10
8x20	988.6	Board ft.	\$ 8.20	\$ 8,106.52
3/4" plywood	433	Sq. ft.	\$ 2.25	\$ 974.25
Total				\$41,894.71
Concrete				
Footings	2.8	CY	\$ 367.00	\$ 1,027.60
Other				
Waterproofing membrane	433	Sq. ft.	\$ 4.72	\$ 2,043.76
Shingles	433	Sq. ft.	\$ 3.50	\$ 1,515.50
Through Bolts	64	lb.	\$ 1.23	\$ 78.72
Total				\$ 3,637.98
Grand Total				\$46,560.29

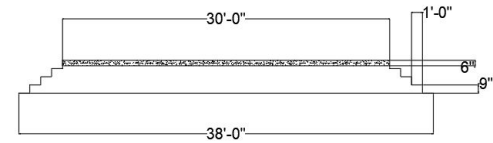
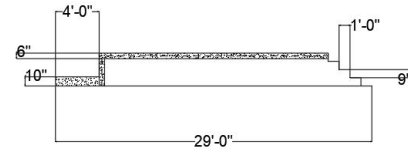
Stage

Type	Cost/yd3	Amount (yd3)	Total Cost
PCC	80	110.92	8873.6
Gr 30	53.89	110	5927.9
PCC (Reinforced)	977.59	222.22	217240
			232041.5

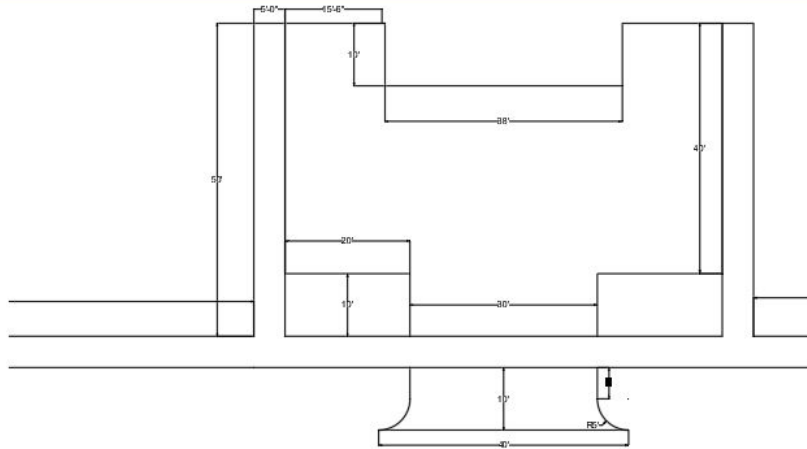


Note:

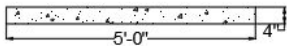
- Center of stage will be back-filled with Grade A gravel to form a semi-hollow structure
- Stairs around stage also rebar reinforced concrete



Staging area



Note: Width and angle of sidewalk varies



Sidewalk PCC



Staging Area PCC

Type	Cost/yd3	Amount (yd3)	Total Cost
PCC	80	110.92	8873.6
Gr 30	53.89	110	5927.9
PCC (Reinforced)	977.59	222.22	217240
			232041.5



Final Cost

Component	Price
Pavilion	\$ 46,560.29
Amphitheater	\$ 316,832.12
Stage	\$ 223,167.00
Staging Area	\$ 8,873.60
Cut/Fill	\$ 8,910.00
Total	\$ 604,343.01

Conclusion



Canadian Pacific Railway Holiday Train



Questions?

The background features a series of dark grey, 3D-style rectangular blocks arranged in a descending staircase pattern from the top right towards the bottom left. Two blocks are highlighted with color: a light green block and a blue block, both positioned on the right side of the staircase.