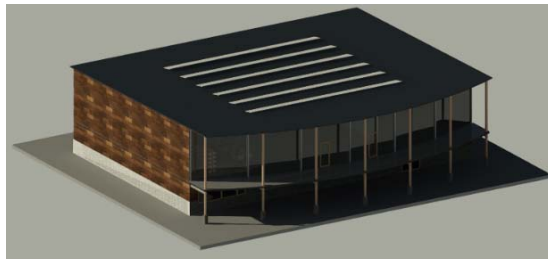




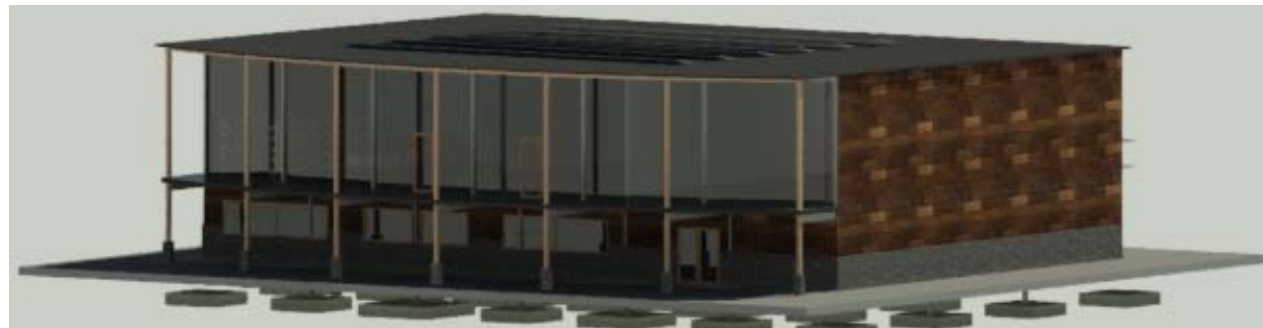
BOONE COUNTY SUSTAINABLE NATURE CENTER

PROJECT CONSTRUCTION BID PLANS OF PROPOSED CONSTRUCTION PROJECT CODE NO. 001



SHEETS DESCRIPTIONS	
SHEET NO.	INDEX OF SHEETS
0	TITLE SHEET
1	GENERAL NOTES
2	SITE PLAN
3	ACCESS ROUTE PROFILE (1)
4	ACCESS ROUTE PROFILE (2)
5	DETENTION BASIN
6	SEPTIC TANK
7	FIRST FLOOR LAYOUT
8	SECOND FLOOR LAYOUT
9	FOUNDATION PLAN
10	FIRST FLOOR FRAMING
11	ROOF FRAMING
12	ELEVATIONS

USED STANDARDS	
CODE	
IOWA STATEWIDE URBAN DESIGN AND SPECIFICATIONS	
SEPTIC SYSTEM DESIGN IOWA	
THE INTERNATIONAL BUILDING CODE	
STEEL CONSTRUCTION MANUAL	
AMERICAN CONCRETE INSTITUTE STANDARDS	
NATIONAL DESIGN SPECIFICATION STANDARDS	
IOWA DOT DESIGN MANUAL	



PROJECT: SUSTAINABLE NATURE CENTER
 DATE: 5/9/2019
 DRAWN BY: HAWK ENGINEERING COMPANY
 REVISION:

THE UNIVERSITY OF IOWA
 CIVIL AND ENVIRONMENTAL ENGINEERING
 ENGINEERING ASSES AND SERVICES
 103 S CAPITOL ST
 IOWA CITY, IOWA 52242
 PHONE: 319.335.5800
 FAX: 319.335.5800
 EMAIL: civil-hawk@uiowa.edu



EDUCATIONAL - NOT FOR CONSTRUCTION

SUSTAINABLE NATURE CENTER
 GRANT'S WOODS PARK
 BOONE COUNTY, IA

SHEET NAME
 TITLE SHEET

SHEET NO.

DESIGN SPECIFICATIONS

WOOD DESIGN:
IBC 2018 & NDS 2015

STEEL DESIGN:
IBC 2018 & AISC

CONCRETE DESIGN:
IBC 2018 & ACI 314-18

SOIL CAPACITY:
IBC 2018

ACCESS ROAD/PARKING LOT:
IAC, SUDAS, & IOWA DOT

HANDICAP ACCESS
ADA

COST ESTIMATE
RSMEANS

PROJECT:	CEE-4850
DATE:	02/2019
DRAWN BY:	HAWK ENGINEERING
REVISION:	

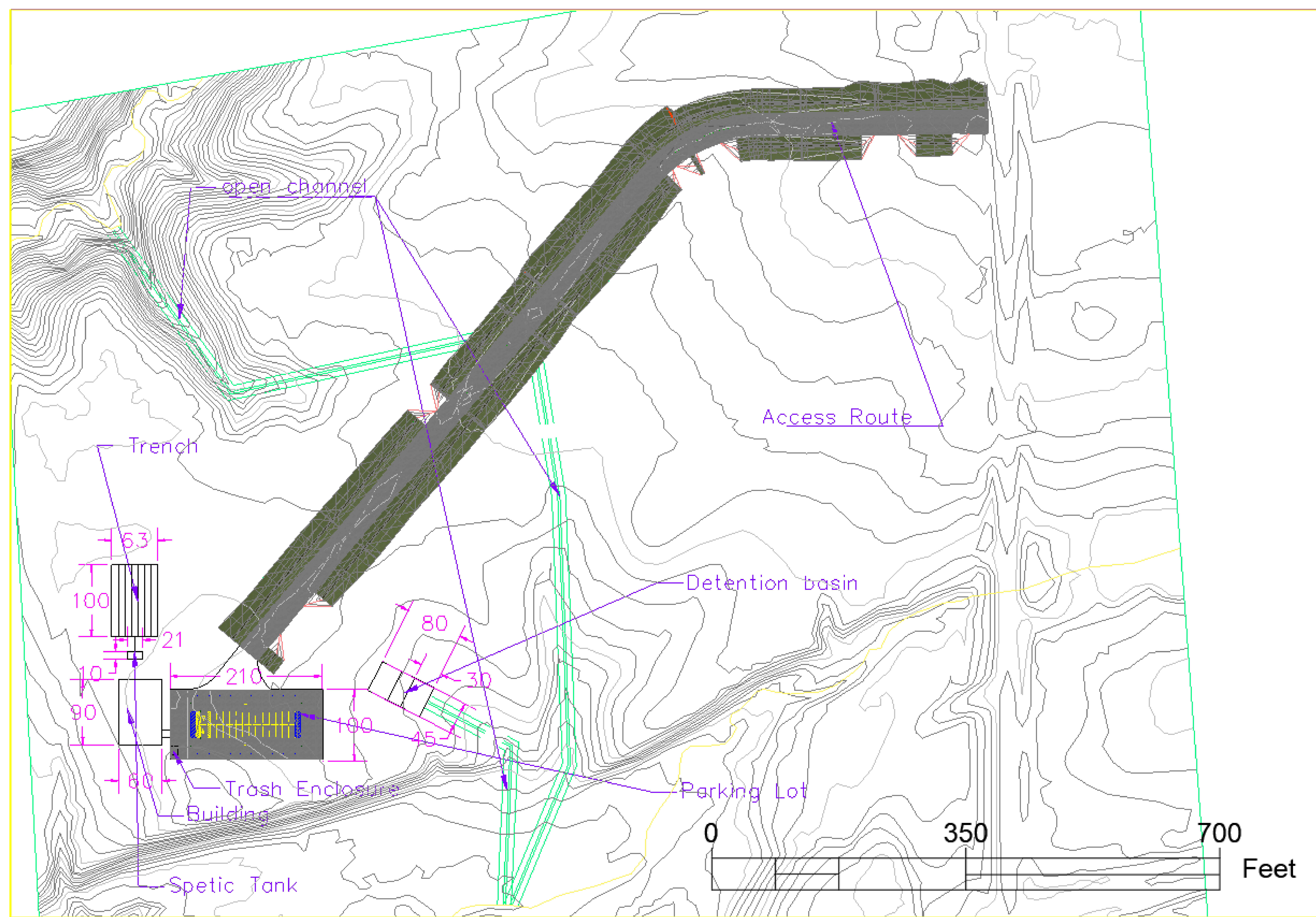
THE UNIVERSITY OF IOWA
CIVIL AND ENVIRONMENTAL ENGINEERING
4105 SEAMANUS CENTER FOR THE
ENGINEERING ARTS AND SCIENCES
103 S CAPITOL ST
IOWA CITY, IOWA 52242
PHONE: 319.335.5660
FAX: 319.335.5660
EMAIL: civil@hawk@iowa.edu

EDUCATIONAL - NOT
FOR CONSTRUCTION

SUSTAINABLE NATURE CENTER
GRANTS' WOODS PARK
BOONE COUNTY, IA

SHEET NAME
GENERAL NOTES

SHEET NO.



PROJECT: CEE-4850
 DATE: 5/3/2019
 DRAWN BY: HAWK ENGINEERING
 REVISION:

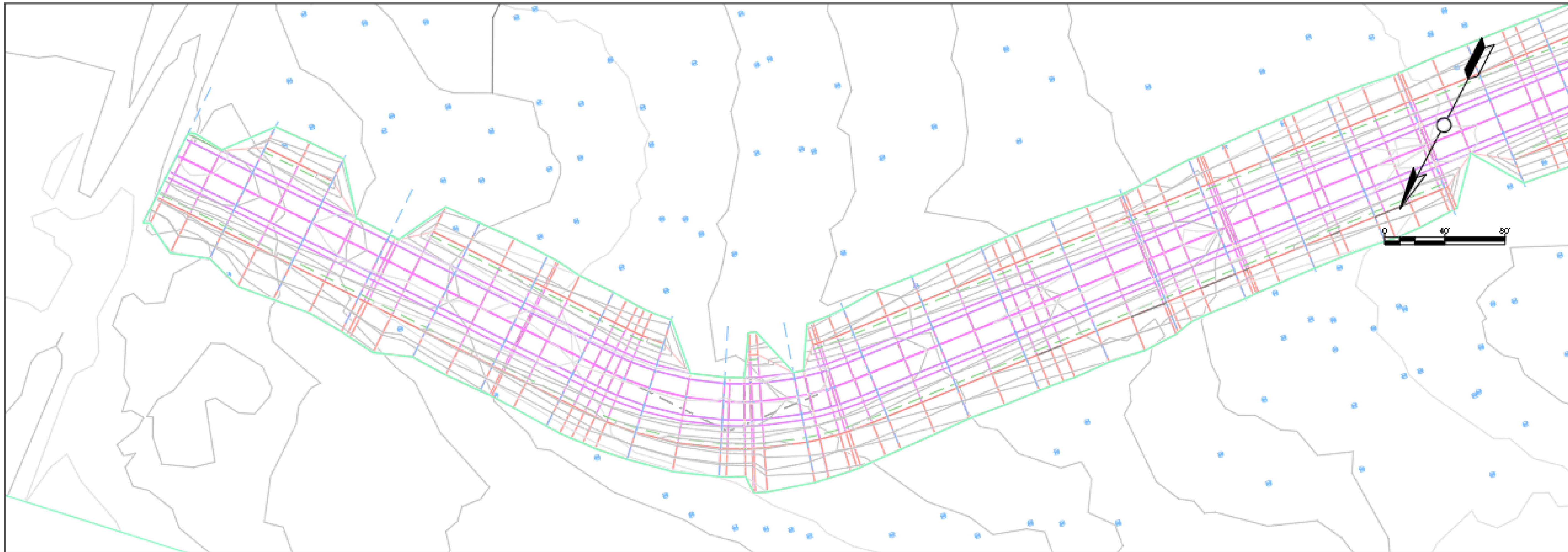
THE UNIVERSITY OF IOWA
 CIVIL AND ENVIRONMENTAL ENGINEERING
 4105 SEAMANS CENTER FOR THE
 ENGINEERING ARTS AND SCIENCES
 103 S CAPITOL ST
 IOWA CITY, IOWA 52242
 PHONE: 319.335.5647
 FAX: 319.335.5660
 EMAIL: civil-hawks@iowa.edu



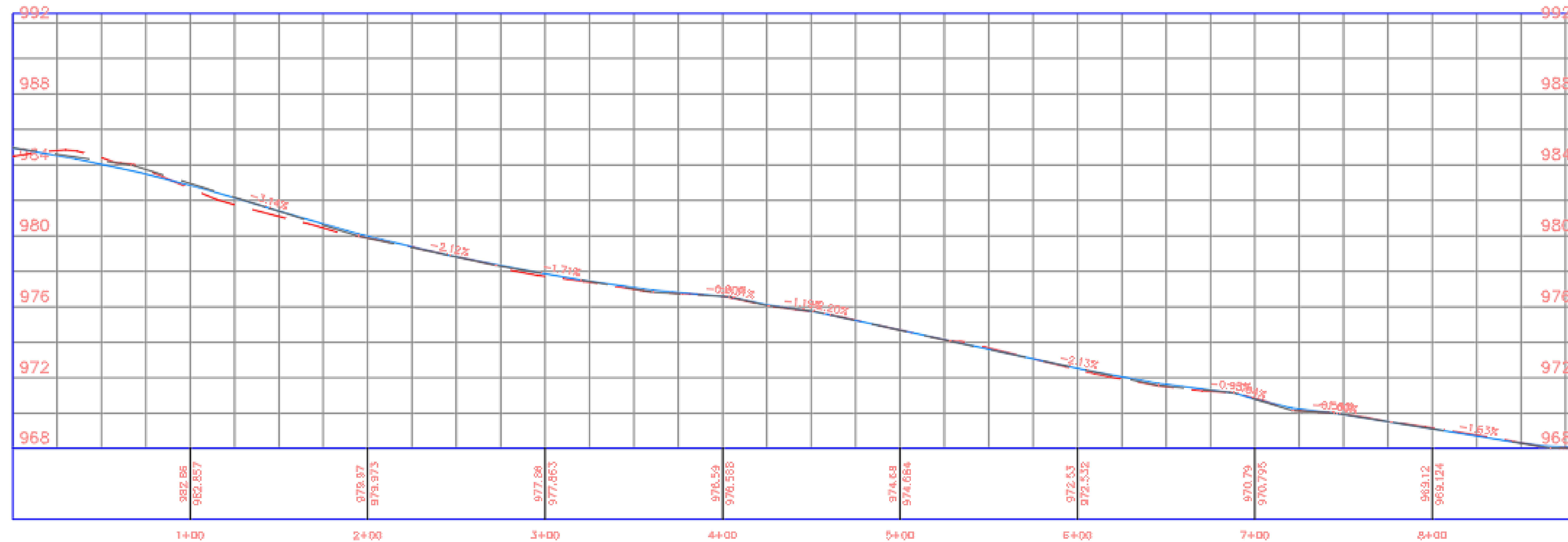
EDUCATIONAL - NOT FOR CONSTRUCTION

Sustainable Nature Center
 Grants' Woods Park
 Boone county, IA

SHEET NAME
 Site Plan
 SHEET NO.
01



Horizontal Alignment PROFILE



PROJECT: CEE: 4850
 DATE: 5/3/2019
 DRAWN BY: HAWK ENGINEERING
 REVISION:

THE UNIVERSITY OF IOWA
 CIVIL AND ENVIRONMENTAL ENGINEERING
 4105 SEAMANS CENTER FOR THE
 ENGINEERING ARTS AND SCIENCES
 103 S CAPITOL ST
 IOWA CITY, IOWA 52242
 PHONE: 319.335.5647
 FAX: 319.335.5660
 EMAIL: civil-hawks@iowa.edu

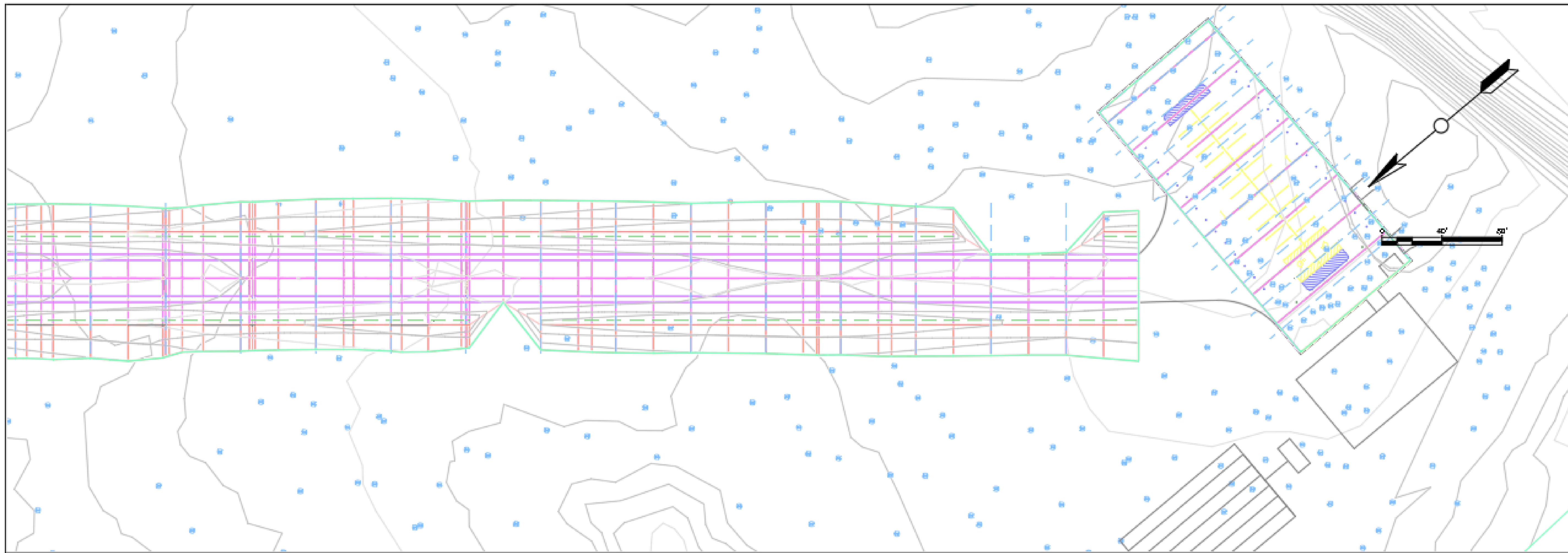
CEE logo BW - no text.tif

EDUCATIONAL - NOT FOR CONSTRUCTION

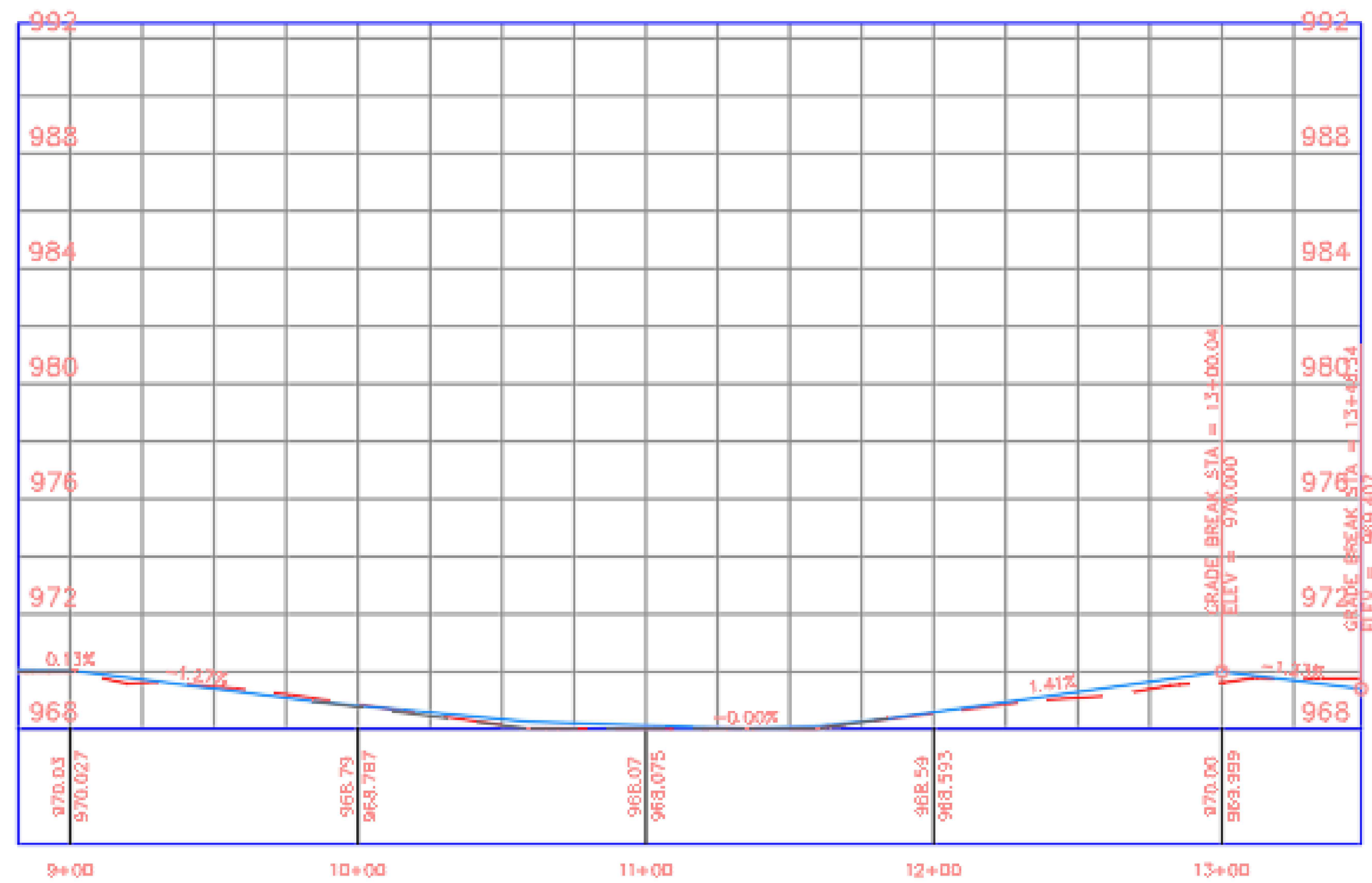
Sustainable Nature Center
 Grants' Woods Park
 Boone county, IA

SHEET NAME
 Access Route Profile
 (1)

SHEET NO.
02



Horizontal Alignment PROFILE



PROJECT: CEE: 4850
 DATE: 5/3/2019
 DRAWN BY: HAWK ENGINEERING
 REVISION:

THE UNIVERSITY OF IOWA
CIVIL AND ENVIRONMENTAL ENGINEERING
 4105 SEAWANS CENTER FOR THE
 ENGINEERING ARTS AND SCIENCES
 103 S CAPITOL ST
 IOWA CITY, IOWA 52242
 PHONE: 319.335.5647
 FAX: 319.335.5660
 EMAIL: civil-hawks@iowa.edu

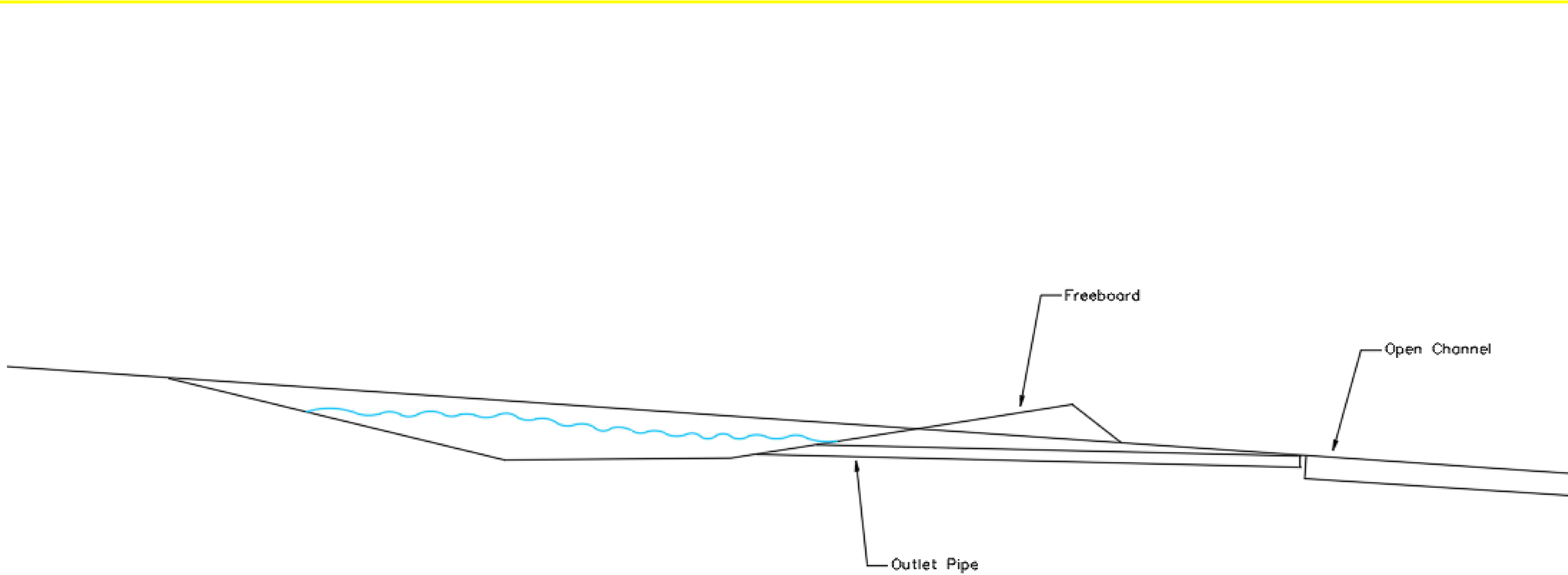
CEE logo BW - no text.tif

EDUCATIONAL - NOT FOR CONSTRUCTION

Sustainable Nature Center
 Grants' Woods Park
 Boone county, IA

SHEET NAME
 Access Route Profile
 (2)

SHEET NO.
03



PROJECT:	CEE: 4850
DATE :	5/3/2019
DRAWN BY:	HAWK ENGINEERING
REVISION:	

THE UNIVERSITY OF IOWA
CIVIL AND ENVIRONMENTAL ENGINEERING
 4105 SEAMANS CENTER FOR THE
 ENGINEERING ARTS AND SCIENCES
 103 S CAPITOL ST
 IOWA CITY, IOWA 52242
 PHONE: 319.335.5647
 FAX: 319.335.5660
 EMAIL: civil-hawks@iowa.edu

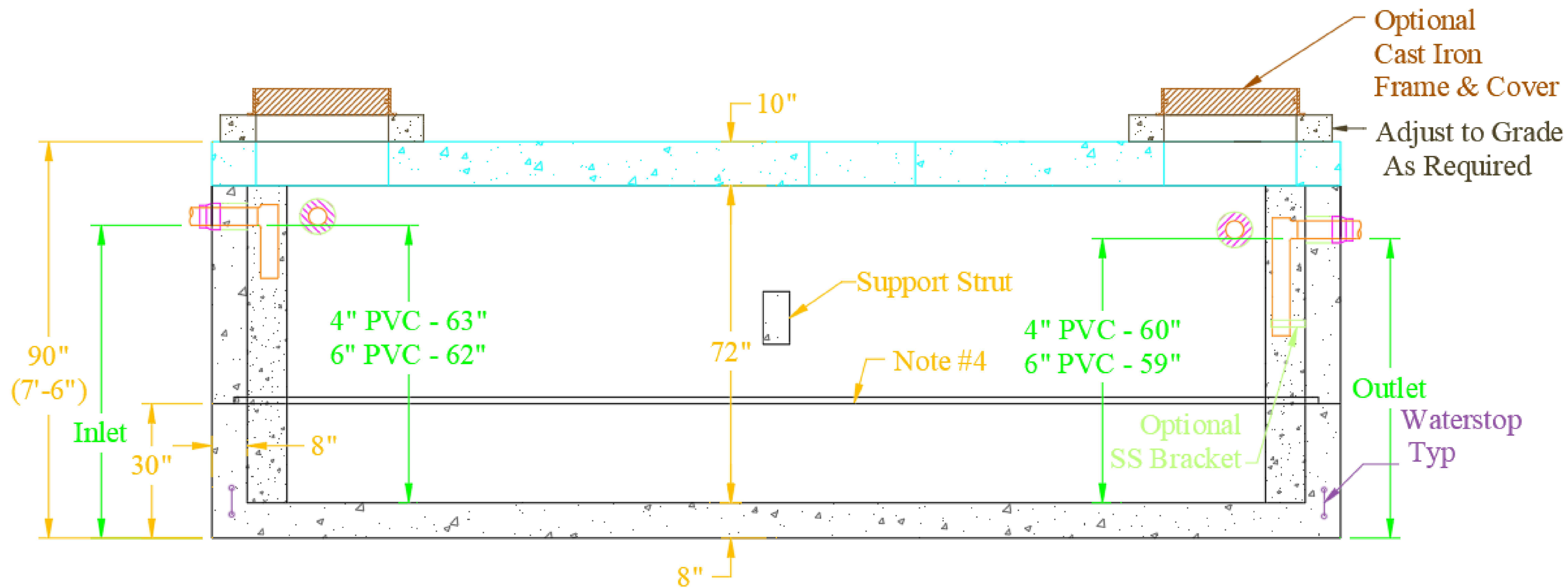
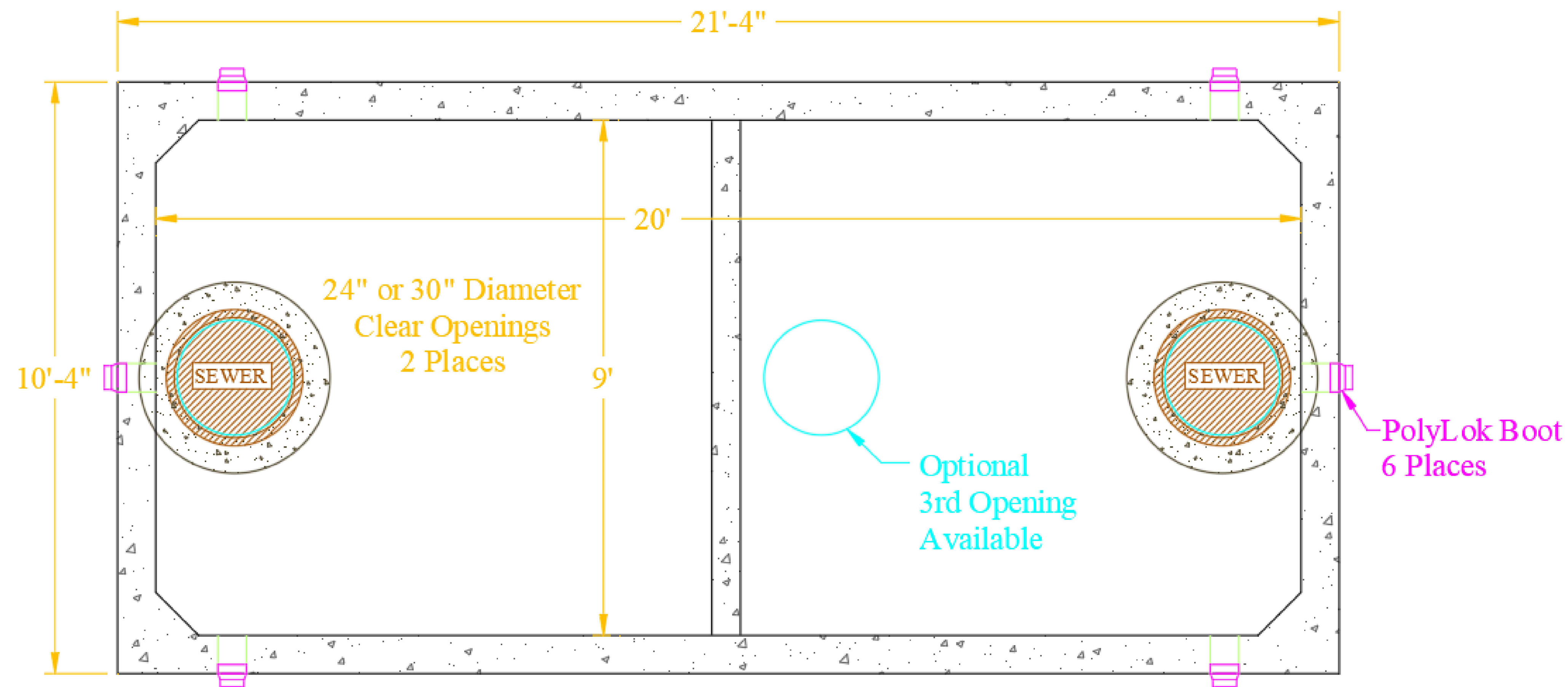


EDUCATIONAL - NOT FOR CONSTRUCTION

Sustainable Nature Center
 Grants' Woods Park
 Boone county, IA

SHEET NAME
 Detention basin

SHEET NO.
04



PROJECT:	CEE: 4850
DATE :	5/3/2019
DRAWN BY:	HAWK ENGINEERING
REVISION:	

THE UNIVERSITY OF IOWA
CIVIL AND ENVIRONMENTAL ENGINEERING
 4105 SEAMANS CENTER FOR THE
 ENGINEERING ARTS AND SCIENCES
 103 S CAPITOL ST
 IOWA CITY, IOWA 52242
 PHONE: 319.335.5647
 FAX: 319.335.5660
 EMAIL: civil-hawks@iowag.edu

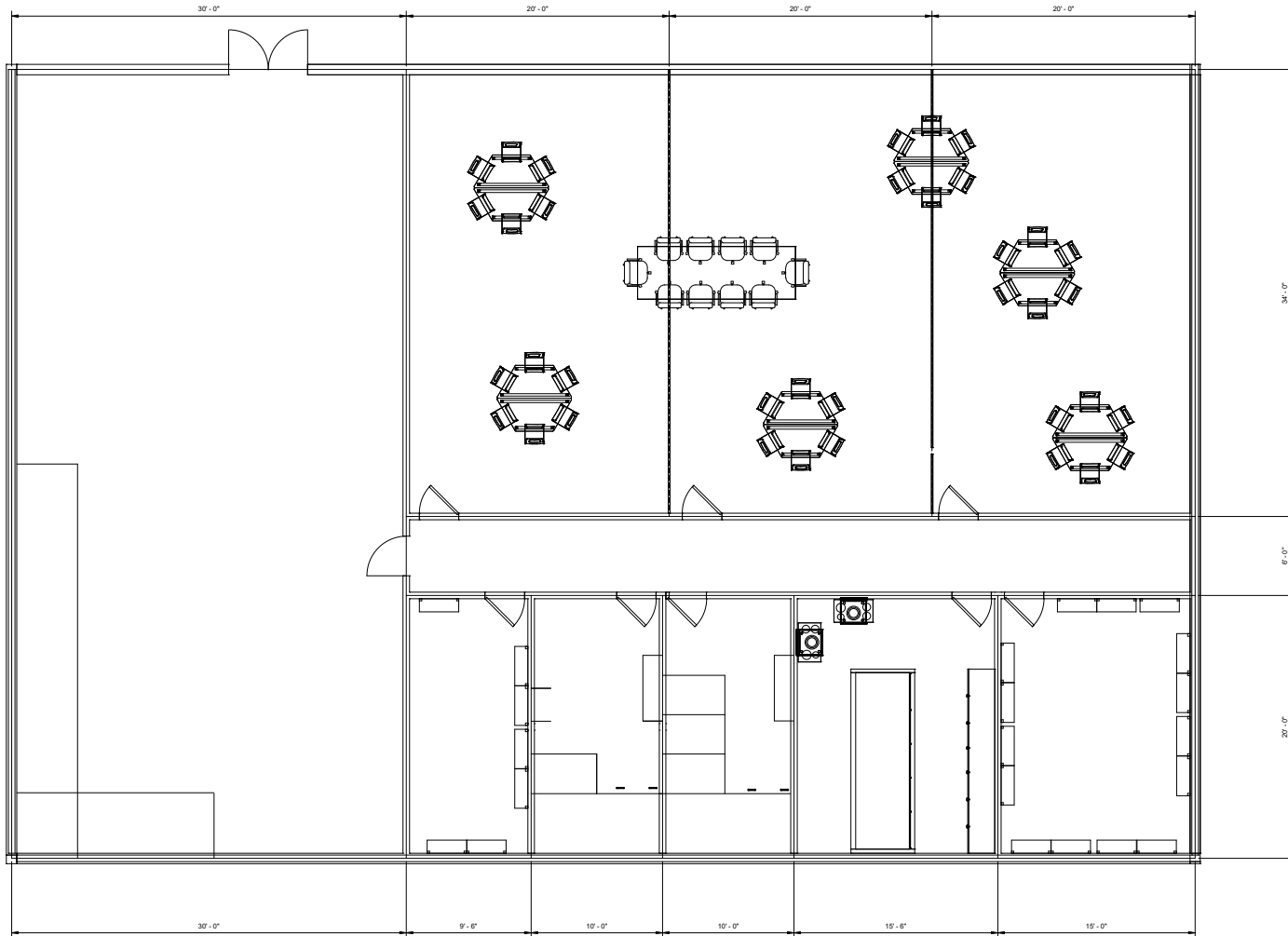


EDUCATIONAL - NOT FOR CONSTRUCTION

Sustainable Nature Center
 Grants' Woods Park
 Boone county, IA

SHEET NAME
 Septic Tank

SHEET NO.
05



PROJECT: CEE-4850
 DATE: 02/2019
 DRAWN BY: HAWK ENGINEERING
 REVISION:

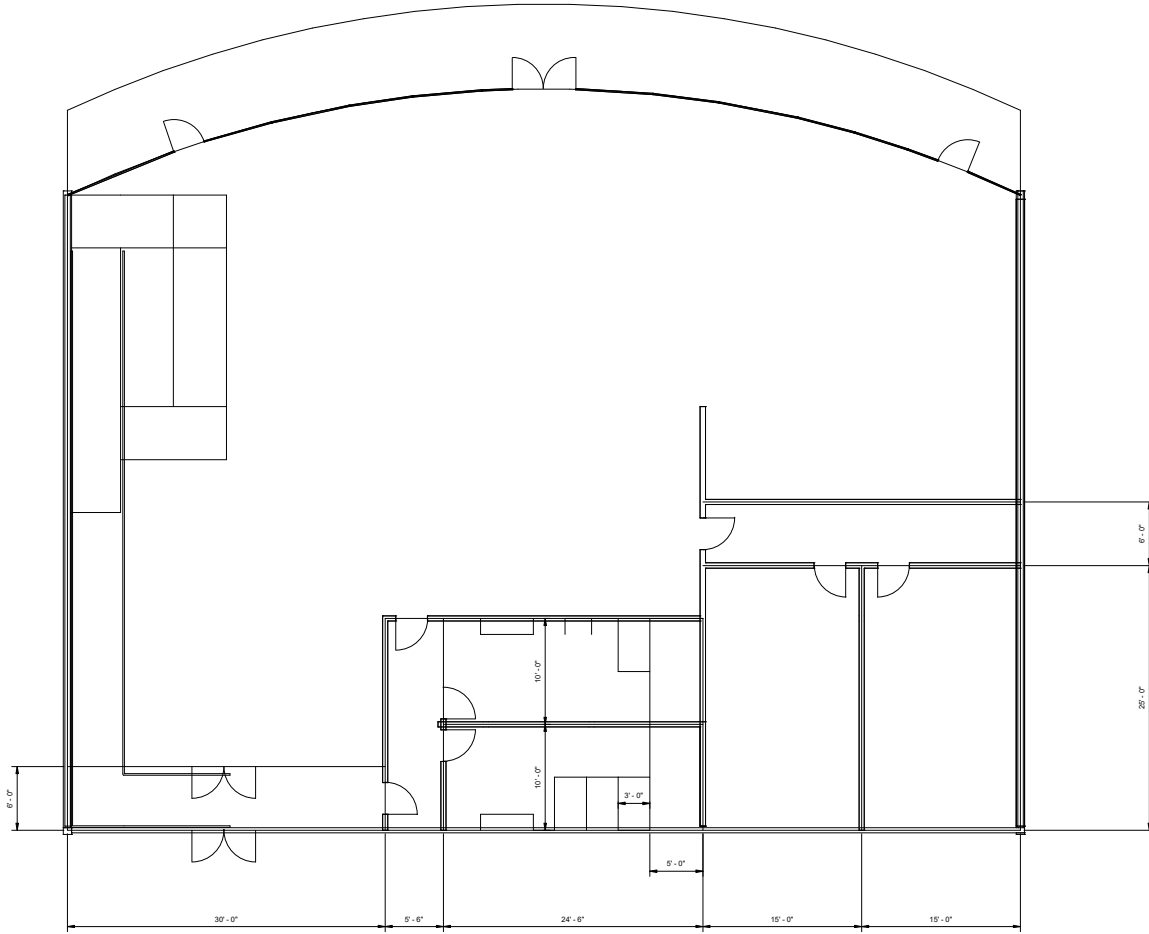
THE UNIVERSITY OF IOWA
CIVIL AND ENVIRONMENTAL ENGINEERING
 4105 SEAMANUS CENTER FOR THE
 ENGINEERING ARTS AND SCIENCES
 103 S. CAPITOL ST.
 IOWA CITY, IOWA 52242
 TEL: 319.335.5660
 FAX: 319.335.5660
 EMAIL: civil-hawks@iowa.edu

EDUCATIONAL - NOT
 FOR CONSTRUCTION

SUSTAINABLE NATURE CENTER
 GRANTS' WOODS PARK
 BOONE COUNTY, IA

SHEET NAME
 FIRST FLOOR
 LAYOUT

SHEET NO.
06



PROJECT: CEE-4850
 DATE: 02/2019
 DRAWN BY: HAWK ENGINEERING
 REVISION:

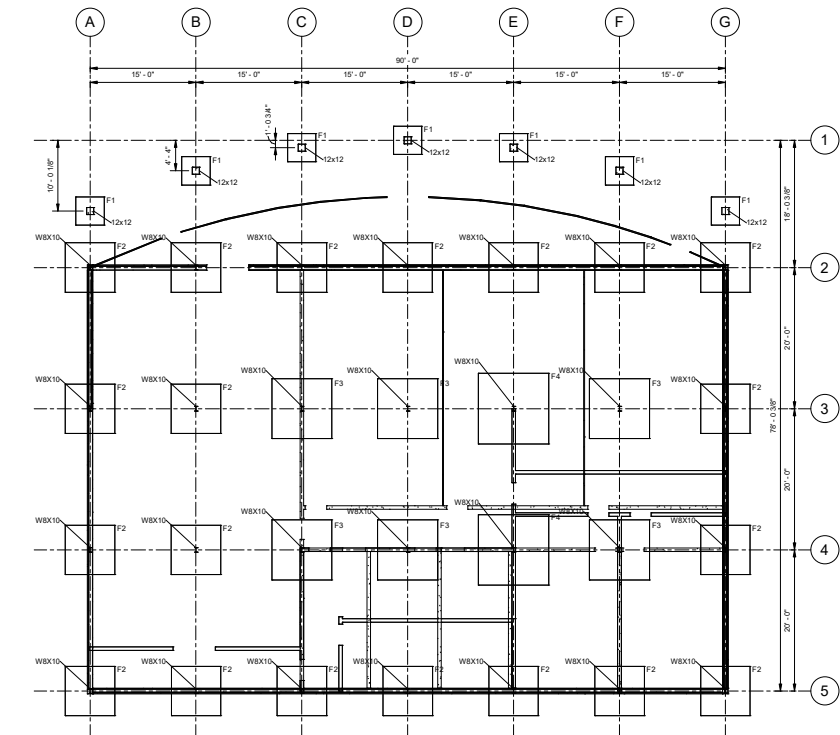
THE UNIVERSITY OF IOWA
CIVIL AND ENVIRONMENTAL ENGINEERING
 4105 SEAMUS CENTER FOR THE
 ENGINEERING ARTS AND SCIENCES
 103 S. CAPITOL ST.
 IOWA CITY, IOWA 52242
 PHONE: 319.335.5660
 FAX: 319.335.5660
 EMAIL: civil-engine@iowa.edu

EDUCATIONAL - NOT
 FOR CONSTRUCTION

SUSTAINABLE NATURE CENTER
 GRANTS WOODS PARK
 BOONE COUNTY, IA

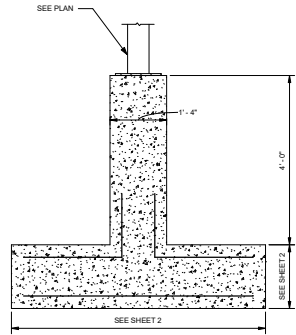
SHEET NAME
 SECOND FLOOR
 LAYOUT

SHEET NO.
07



1 FOUNDATION PLAN
1/8" = 1'-0"

Structural Foundation Schedule					
Type	Elevation at Top	Length	Width	Foundation Thickness	Count
F1	4'-0"	4'-0"	4'-0"	1'-0"	7
F2	4'-0"	7'-0"	7'-0"	1'-6"	20
F3	4'-0"	8'-6"	8'-6"	1'-6"	6
F4	4'-0"	10'-0"	10'-0"	1'-6"	2



2 TYP. SPREAD FOOTING
3/4" = 1'-0"

PROJECT: CEE-4850
DATE: 5/2/2019
DRAWN BY: HAWK ENGINEERING
REVISION:

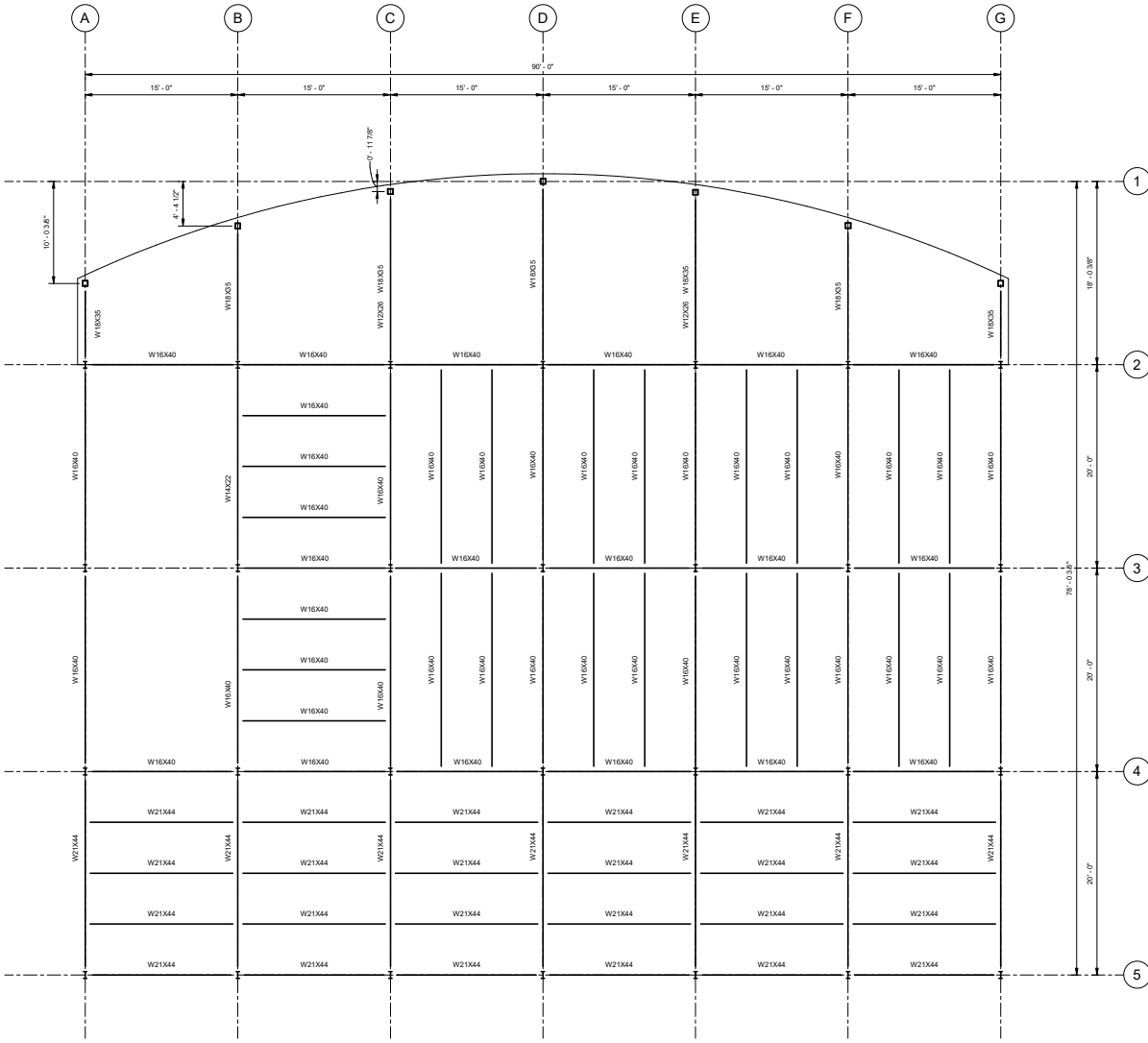
THE UNIVERSITY OF IOWA
CIVIL AND ENVIRONMENTAL ENGINEERING
4105 SEAMANUS CENTER FOR THE
ENGINEERING ARTS AND SCIENCES
103 S. CAPITOL ST.
IOWA CITY, IOWA 52242
PHONE: 319.335.5666
FAX: 319.335.5660
EMAIL: civil-engine@iowa.edu

EDUCATIONAL - NOT FOR CONSTRUCTION

SUSTAINABLE NATURE CENTER
GRANTS WOODS PARK
BOONE COUNTY, IA

SHEET NAME
FOUNDATION PLAN

SHEET NO.
08



FLOOR 1
3/16" = 1'-0"

PROJECT: CEE-4850
DATE: 02/2019
DRAWN BY: HAWK ENGINEERING
REVISION:

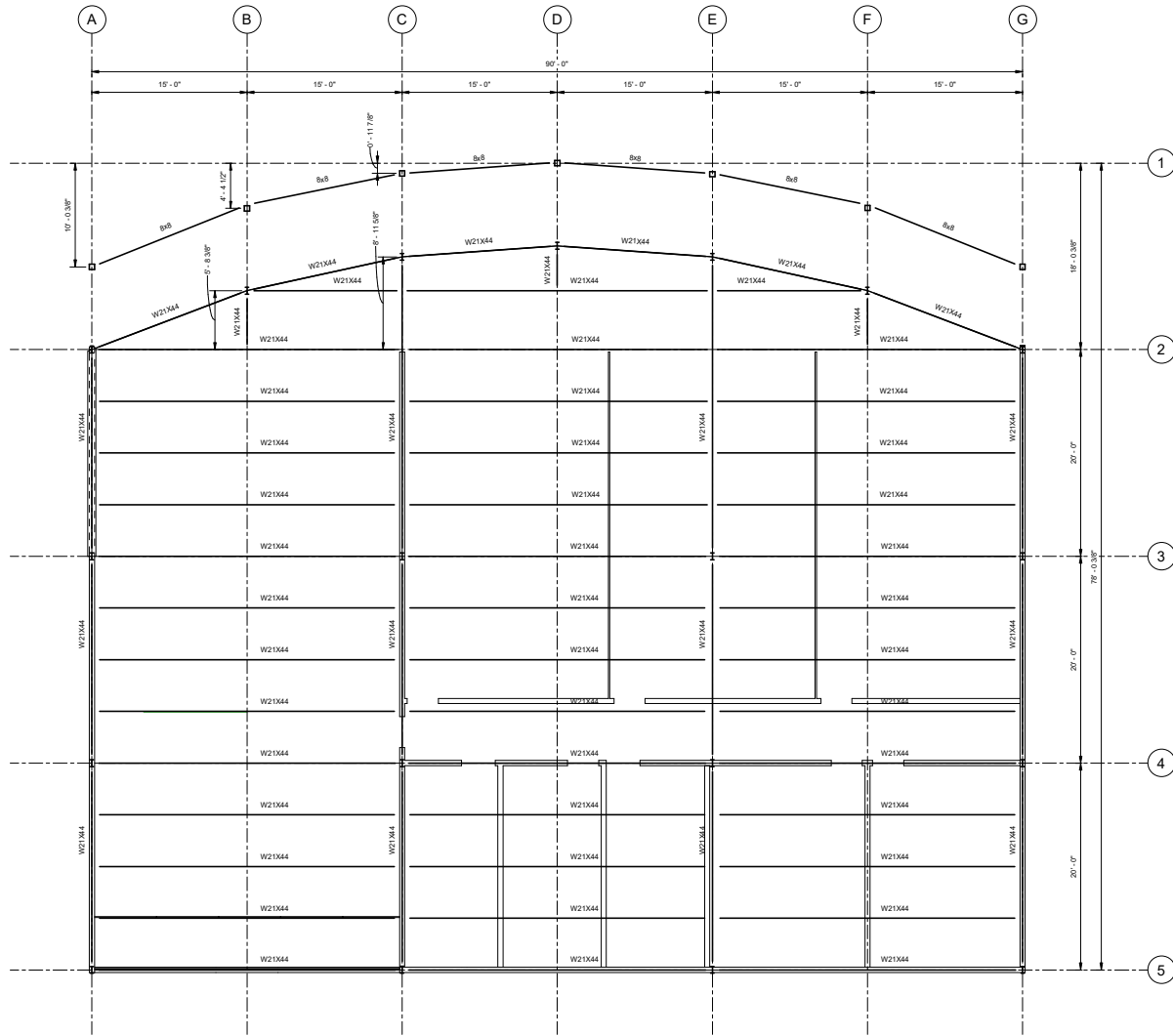
THE UNIVERSITY OF IOWA
CIVIL AND ENVIRONMENTAL ENGINEERING
4105 SEAMANUS CENTER FOR THE
ENGINEERING ARTS AND SCIENCES
103 S. CAPITOL ST.
IOWA CITY, IOWA 52242
PH: 319.335.5666
FAX: 319.335.5660
EMAIL: civil-engine@iowa.edu

EDUCATIONAL - NOT
FOR CONSTRUCTION

SUSTAINABLE NATURE CENTER
GRANTS' WOODS PARK
BOONE COUNTY, IA

SHEET NAME
FIRST FLOOR
FRAMING

SHEET NO.
09



① FLOOR 2
3/16" = 1'-0"

PROJECT: CEE-4850
DATE: 02/2019
DRAWN BY: HAWK ENGINEERING
REVISION:

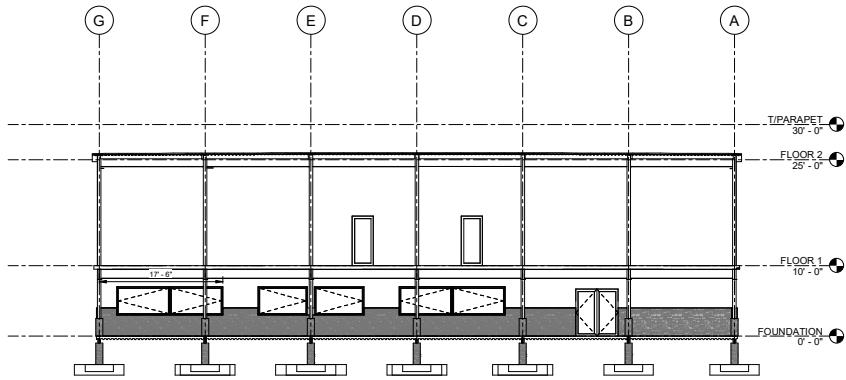
THE UNIVERSITY OF IOWA
CIVIL AND ENVIRONMENTAL ENGINEERING
4105 SEAMANUS CENTER FOR THE
ENGINEERING ARTS AND SCIENCES
103 S. CAPITOL ST.
IOWA CITY, IOWA 52242
PHONE: 319.335.5661
FAX: 319.335.5660
EMAIL: civil-engine@iowa.edu

EDUCATIONAL - NOT
FOR CONSTRUCTION

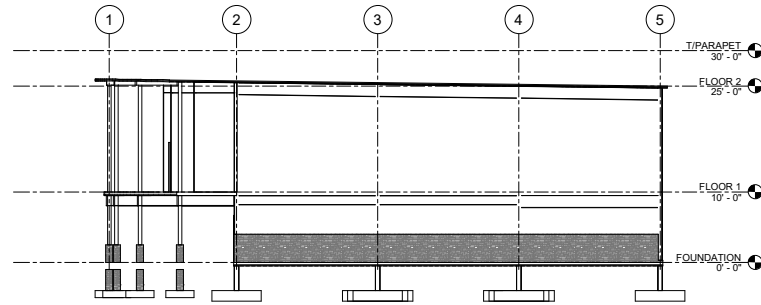
SUSTAINABLE NATURE CENTER
GRANTS WOODS PARK
BOONE COUNTY, IA

SHEET NAME
ROOF FRAMING

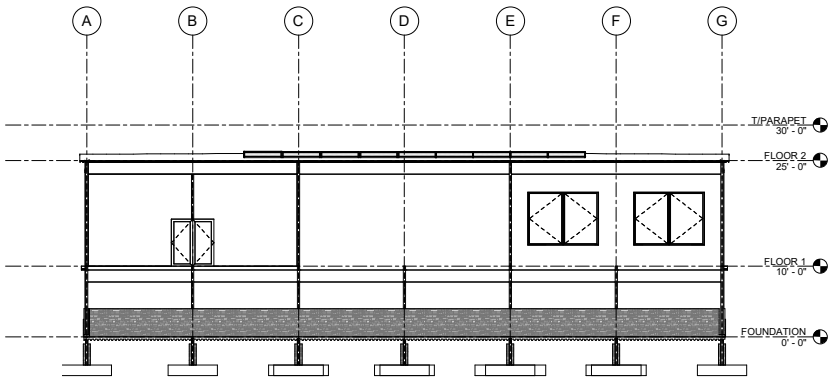
SHEET NO.
10



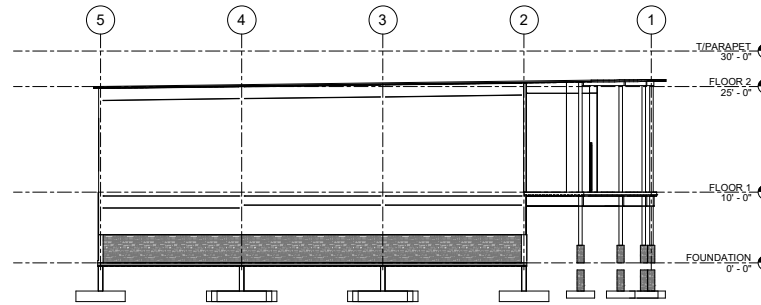
1 WEST ELEVATION
1/8" = 1'-0"



2 SOUTH ELEVATION
1/8" = 1'-0"



3 EAST ELEVATION
1/8" = 1'-0"



4 NORTH ELEVATION
1/8" = 1'-0"

PROJECT: CEE-4850
DATE: 02/2019
DRAWN BY: HAWK ENGINEERING
REVISION:
THE UNIVERSITY OF IOWA
CIVIL AND ENVIRONMENTAL ENGINEERING
4105 SEAMANUS CENTER FOR THE
ENGINEERING ARTS AND SCIENCES
103 S. CAPITOL ST.
IOWA CITY, IOWA 52242
PHONE: 319.335.5660
FAX: 319.335.5660
EMAIL: civil@hawk.uniowa.edu

EDUCATIONAL - NOT
FOR CONSTRUCTION

SUSTAINABLE NATURE CENTER

GRANTS WOODS PARK
BOONE COUNTY, IA

SHEET NAME
ELEVATIONS

SHEET NO.

11