

SAWMILL EVENT CENTER

2232 Grant Street Clinton, IA

Matt Parbs, Executive Director Sawmill Museum
director@thesawmillmuseum.org

GENERAL

- 00.00 Cover Sheet
- 00.01 Existing Site Conditions

CIVIL/LANDSCAPE ARCHITECTURE

- 00.01 Grading Plan
- 00.02 Pavement Details
- 00.03 Utility Plan
- 00.04 Landscape Plan
- 00.05 Landscape Details

STRUCTURAL

- S0.01 Foundation Plan
- S0.02 Second Floor Framing Plans
- S0.03 Roof Framing Plans
- S0.04 Framing Details
- S0.05 Moment Frame
- S0.06 Bracing Details
- S0.07 Column Schedule
- S0.08 Stair & Elevator Details
- S0.09 Slab Details

ARCHITECTURAL

- A0.01 First Floor Plan
- A0.02 Second Floor Plan
- A0.03 Roof Floor Plan
- A0.04 Building Elevations



Overview



Legend

- +— Railroad Centerline
- Road Centerlines
- ▭ Road Right of Way
- ▭ Railroad Right of Way
- Creeks
- ▭ Rivers and Lakes
- Original River Bed



PROJECT:	CEE:4850;MEC
DATE:	4/9/2021
DRAWN BY:	EV
REVISION:	

THE UNIVERSITY OF IOWA
CIVIL AND ENVIRONMENTAL ENGINEERING
4105 SEAMANS CENTER FOR THE ENGINEERING ARTS & SCIENCES
100 S. CAPITOL ST.
IOWA CITY, IOWA 52242
PHONE: 319.335.5647
FAX: 319.335.5660
EMAIL: civil-hawes@iowa.edu



EDUCATIONAL - NOT FOR CONSTRUCTION

SAWMILL EVENT CENTER

2232 GRANT STREET
CLINTON, IOWA 52732

SHEET NAME

COVER SHEET

SHEET NO.

00.00



STORM SEWER

- 1. NO EXISTING STORM SEWERS EXIST ON SITE
- 2. THE SITE CONTRACTOR TO SETUP AGREEMENT WITH IAW FOR PLANS

SANITARY SEWER

- 1. NO EXISTING SANITARY SEWER EXISTS ON SITE
- 2. THE SITE CONTRACTOR TO SETUP AGREEMENT WITH IAW FOR PLANS

PROJECT:	CEE:4850-MEC
DATE :	4/9/2021
DRAWN BY:	JM
REVISION:	

THE UNIVERSITY OF IOWA
CIVIL AND ENVIRONMENTAL ENGINEERING
 4105 SEAMANS CENTER FOR THE ENGINEERING ARTS AND SCIENCES
 103 S CAPITOL ST
 IOWA CITY, IOWA 52242
 PHONE: 319.335.0667
 FAX: 319.335.0667
 EMAIL: civil-how@iowa.edu

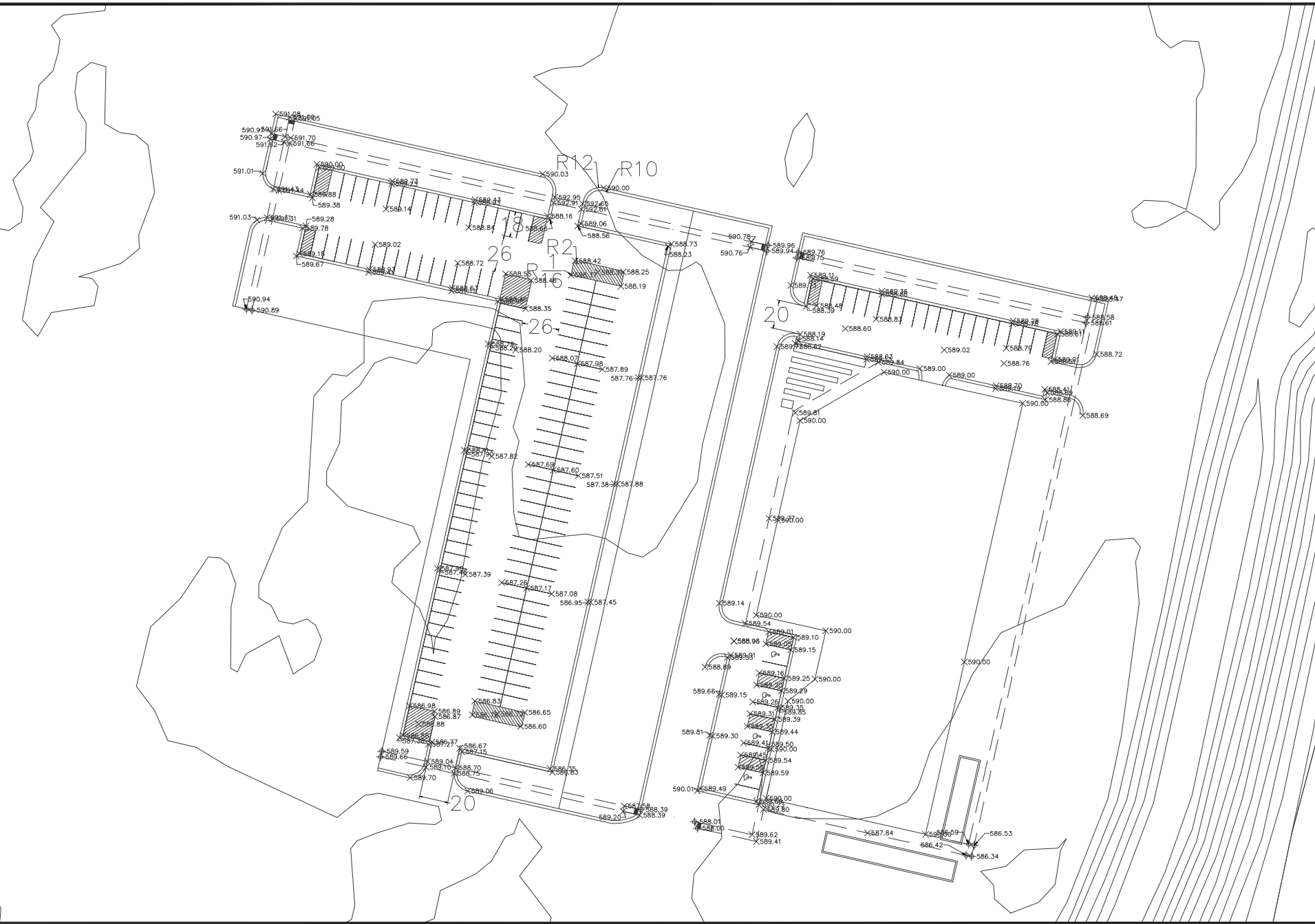


EDUCATIONAL - NOT FOR CONSTRUCTION

SAWMILL EVENT CENTER
 2232 GRANT STREET
 CLINTON, IOWA 52732

SHEET NAME
 EXISTING SITE
 1/28" = 1'-0"

SHEET NO.
G0.01



PROJECT:	CEE:4850-MEC
DATE:	4/9/2021
DRAWN BY:	JM
REVISION:	

THE UNIVERSITY OF IOWA
CIVIL AND ENVIRONMENTAL ENGINEERING
 4105 SEAMANS CENTER FOR THE
 ENGINEERING ARTS AND SCIENCES
 IOWA CITY, IOWA 52242
 PHONE: 319.335.5647
 FAX: 319.335.5660
 EMAIL: civil-hawks@iowa.edu



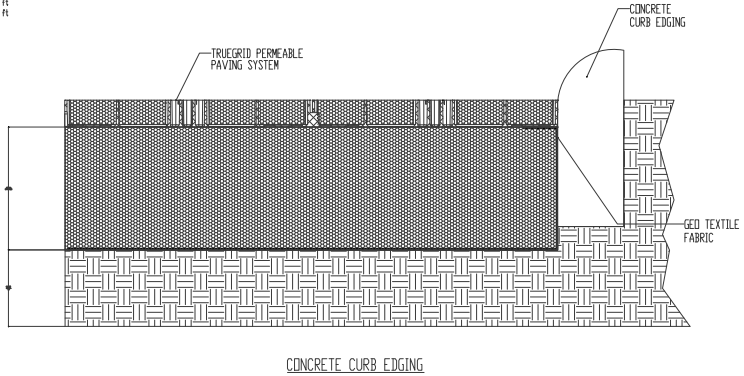
EDUCATIONAL - NOT FOR CONSTRUCTION

SAWMILL EVENT CENTER
 2337 GRANT STREET
 CLINTON, IOWA 52732

SHEET NAME
 SITE PLAN
 1" = 30'-0"

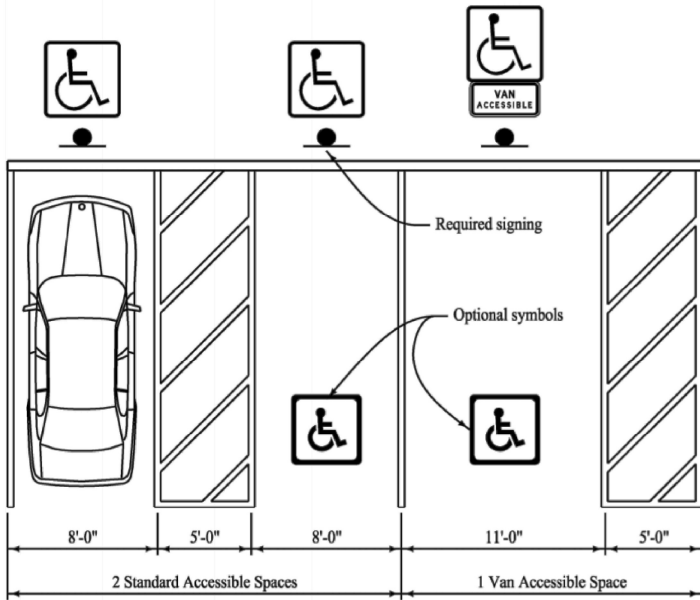
SHEET NO.
C0.01

NOTES:
Depth of Lot 1 is 45 ft
Depth of Lot 2 is 35 ft
Depth of Lot 3 is 35 ft

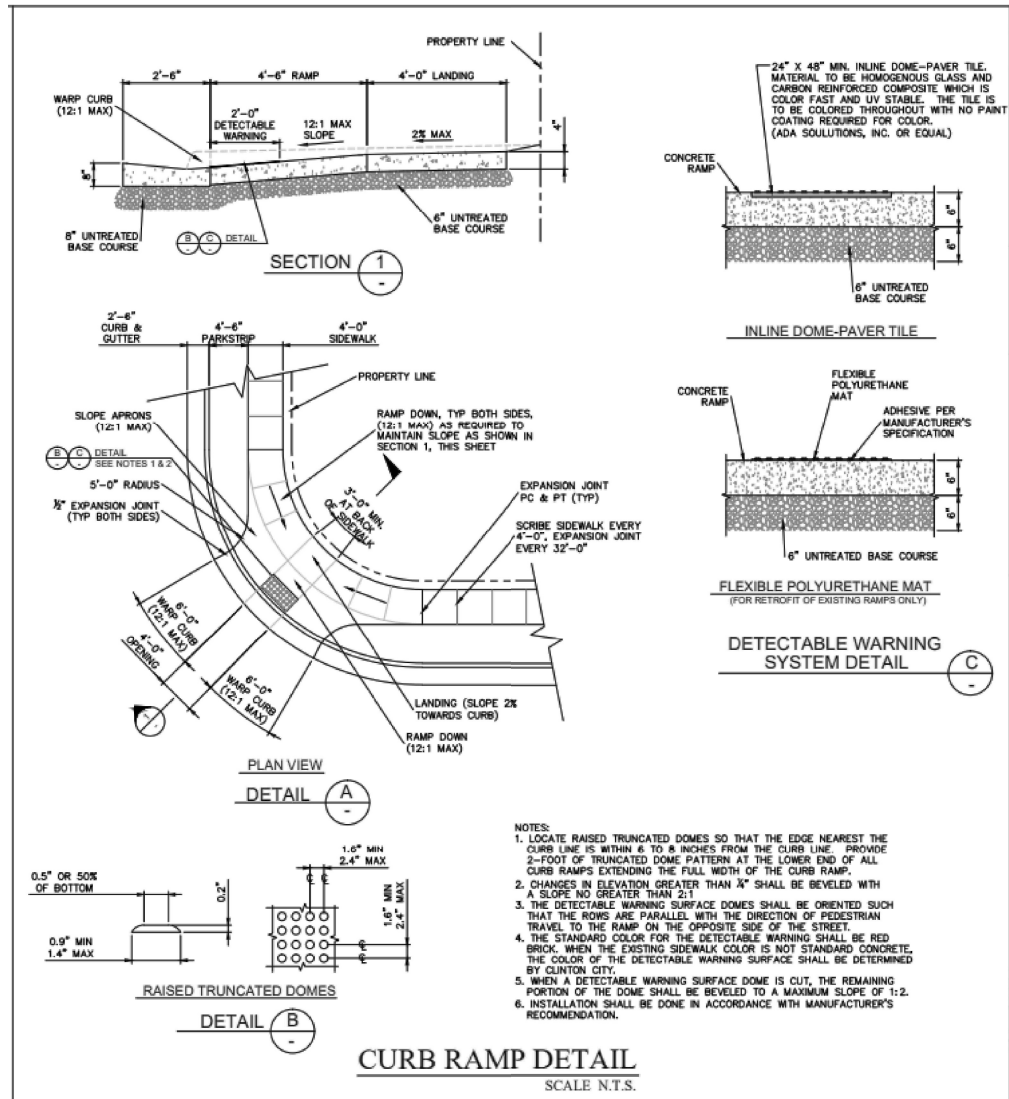


FOR PRICING OR ORDERING CALL 1-855-355-GRID (4743). IN STOCK. FACTORY DIRECT.

1-855-355-GRID (4743)		CLIENT / PROJECT	
MADE IN U.S.A.		TRUEGRID	
U.S.A.		TRUEGRID (4743)	
TRUEGRIDPERV.COM		TRUEGRID (4743)	



STANDARD ADA ACCESSIBLE PARKING STALL



CURB RAMP DETAIL
SCALE N.T.S.

- NOTES:
1. LOCATE RAISED TRUNCATED DOMES SO THAT THE EDGE NEAREST THE CURB LINE IS WITHIN 6 TO 8 INCHES FROM THE CURB LINE. PROVIDE 2-FOOT OF TRUNCATED DOME PATTERN AT THE LOWER END OF ALL CURB RAMPS EXTENDING THE FULL WIDTH OF THE CURB RAMP.
 2. CHANGES IN ELEVATION GREATER THAN 1/4" SHALL BE BEVELED WITH A SLOPE NO GREATER THAN 2:1.
 3. THE DETECTABLE WARNING SURFACE DOMES SHALL BE ORIENTED SUCH THAT THE ROWS ARE PARALLEL WITH THE DIRECTION OF PEDESTRIAN TRAVEL TO THE RAMP ON THE OPPOSITE SIDE OF THE STREET.
 4. THE STANDARD COLOR FOR THE DETECTABLE WARNING SHALL BE RED BRICK. WHEN THE EXISTING SIDEWALK COLOR IS NOT STANDARD CONCRETE, THE COLOR OF THE DETECTABLE WARNING SURFACE SHALL BE DETERMINED BY CLINTON CITY.
 5. WHEN A DETECTABLE WARNING SURFACE DOME IS CUT, THE REMAINING PORTION OF THE DOME SHALL BE BEVELED TO A MAXIMUM SLOPE OF 1:2.
 6. INSTALLATION SHALL BE DONE IN ACCORDANCE WITH MANUFACTURER'S RECOMMENDATION.

PROJECT: CEE-4850;MEC
DATE: 4/9/2021
DRAWN BY: JM
REVISION:
THE UNIVERSITY OF IOWA
CIVIL AND ENVIRONMENTAL ENGINEERING
4105 SEAMANS CENTER FOR THE ENVIRONMENTAL SCIENCES
ENGINEERING ARCHES, S. CAPITOL ST.
IOWA CITY, IOWA 52242
PHONE: 319.335.5647
FAX: 319.335.5660
EMAIL: civil-hawes@iowa.edu

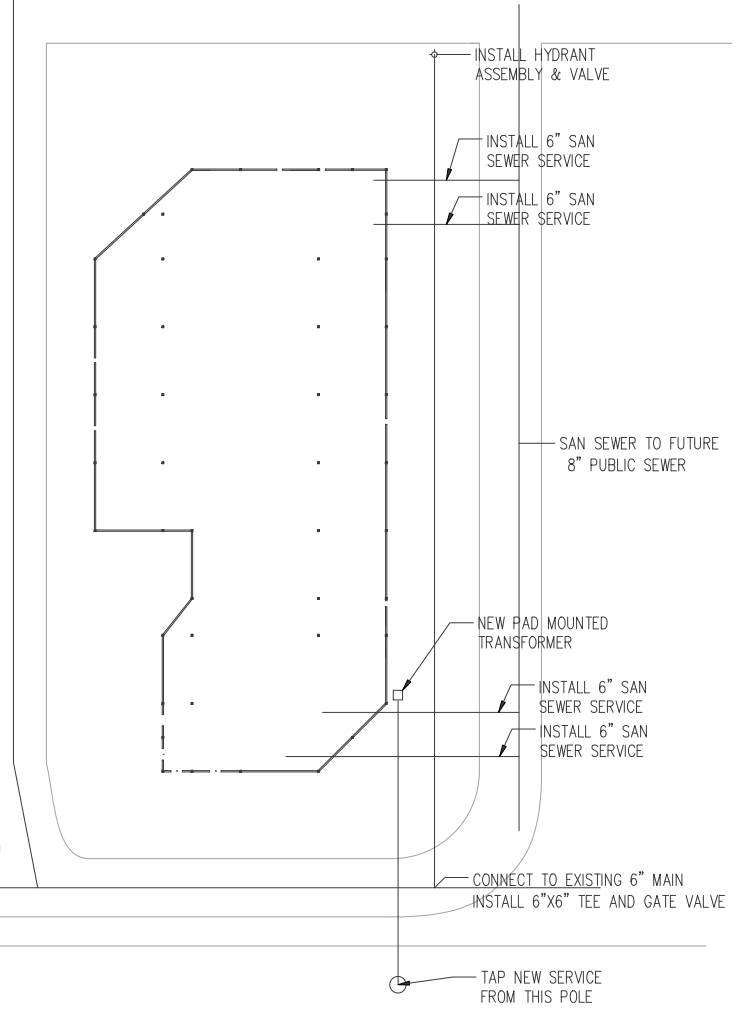
EDUCATIONAL - NOT FOR CONSTRUCTION

SAWMILL EVENT CENTER
2232 GRANT STREET
CLINTON, IOWA 52732

SHEET NAME: PAVEMENT DETAILS
SHEET NO.: C0.02

WATER SERVICE

1. CONTRACTORS TO ARRANGE AND PAY FOR ANY REQUIRED TAP TO MAINS
2. CONTRACTOR SHALL COMPLY WITH ALL CITY CODES AND ORDINANCES
3. PLUMBING CONTRACTOR SHALL INSTALL REQUIRED FITTINGS AND VALVES FOR DOMESTIC SERVICE



PROJECT:	CEE:4850;MEC
DATE :	4/9/2021
DRAWN BY:	EV & LL
REVISION:	

THE UNIVERSITY OF IOWA
CIVIL AND ENVIRONMENTAL ENGINEERING

IOWA ENGINEERING

4105 SEAMANS CENTER FOR THE ENGINEERING ARTS & SCIENCES
103 S. CAPITOL ST.
IOWA CITY, IOWA 52242
PHONE: 319.335.5647
FAX: 319.335.5660
EMAIL: civil-hawes@iowa.edu

EDUCATIONAL - NOT FOR CONSTRUCTION

SAWMILL EVENT CENTER

2232 GRANT STREET
CLINTON, IOWA 52732

SHEET NAME
UTILITY PLAN

SHEET NO.
C0.03

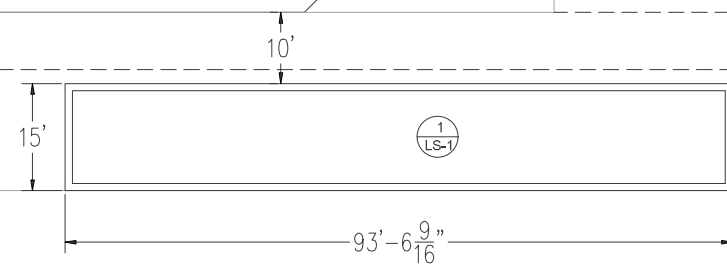
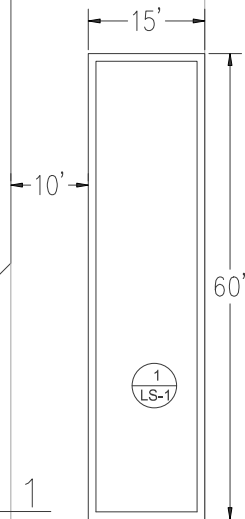
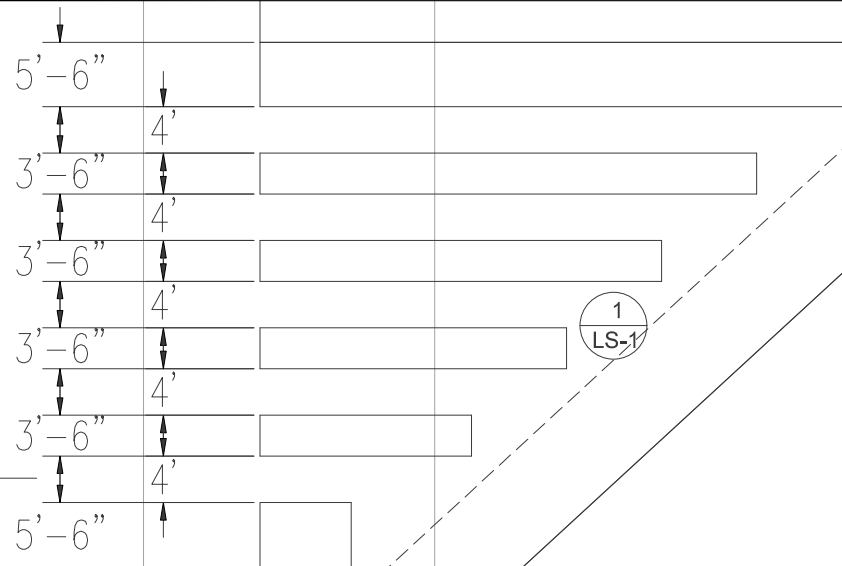
LANDSCAPE NOTES

1. ALL PLANT MATERIAL INSTALLATION, INCLUDING SEED AND SOD TO BE COMPLETED PRIOR TO OPENING
2. THE CONTRACTOR SHALL VERIFY LOCATION AND PROTECT ALL UTILITIES AND STRUCTURES. DAMAGE TO UTILITIES AND STRUCTURES SHALL BE REPAIRED BY THE CONTRACTOR TO SATISFACTION OF THE OWNER
3. LOCATION AND CHOICE OF NATIVE PLANTS WITH GUIDANCE OF IOWA RAIN GARDEN DESIGN

① NORTH RAIN GARDEN
 $\frac{3}{16}'' = 1'-0''$

② WEST GARDEN 1
 $\frac{3}{16}'' = 1'-0''$
 10'

③ WEST GARDEN 2
 $\frac{3}{16}'' = 1'-0''$



PROJECT:	CEE:4850;MEC
DATE:	4/9/2021
DRAWN BY:	EV
REVISION:	

THE UNIVERSITY OF IOWA
CIVIL AND ENVIRONMENTAL ENGINEERING
 4105 SEAMANS CENTER FOR THE ENVIRONMENTAL ENGINEERING ARTS & SCIENCES
 IOWA CITY, IOWA 52242
 PHONE: 319.335.5647
 FAX: 319.335.5660
 EMAIL: civil-hawes@iowa.edu

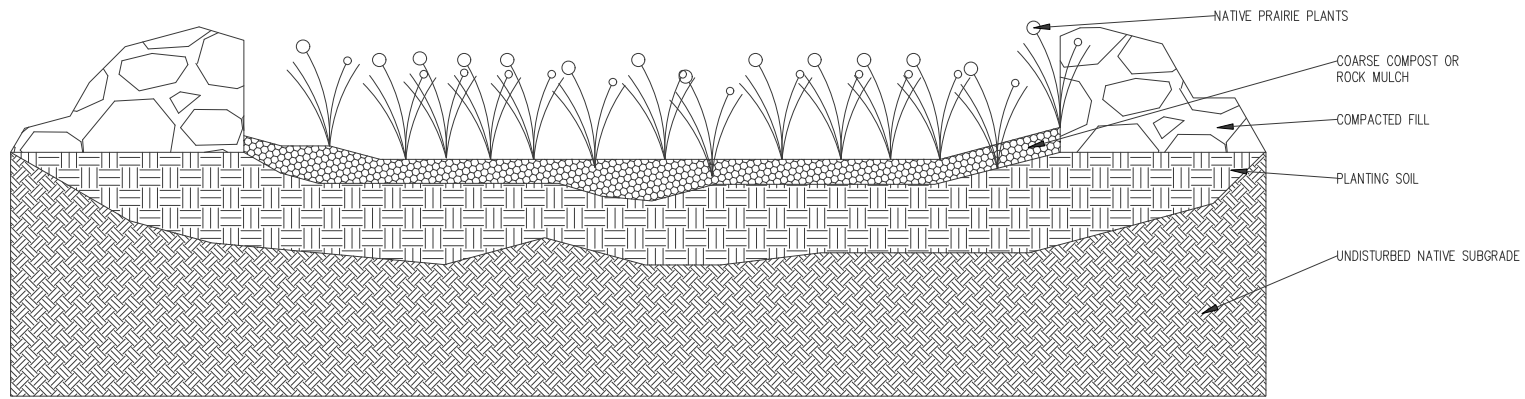


EDUCATIONAL - NOT FOR CONSTRUCTION

SAWMILL EVENT CENTER
 2332 GRANT STREET
 CLINTON, IOWA 52732

SHEET NAME
 LANDSCAPE PLAN

SHEET NO.
C0.04



PROJECT: CEE:4850;MEC
 DATE: 4/9/2021
 DRAWN BY: EV
 REVISION:

THE UNIVERSITY OF IOWA
CIVIL AND ENVIRONMENTAL ENGINEERING
 4105 SEAMANS CENTER FOR THE ENVIRONMENTAL SCIENCES
 ENGINEERING ARCHITECTURE CENTER
 IOWA CITY, IOWA 52242
 PHONE: 319.335.5647
 FAX: 319.335.5660
 EMAIL: civil-hw@iowa.edu

IOWA
ENGINEERING

EDUCATIONAL - NOT FOR CONSTRUCTION

SAWMILL EVENT CENTER
 2332 GRANT STREET
 CLINTON, IOWA 52732

SHEET NAME
 LANDSCAPE
 DETAIL

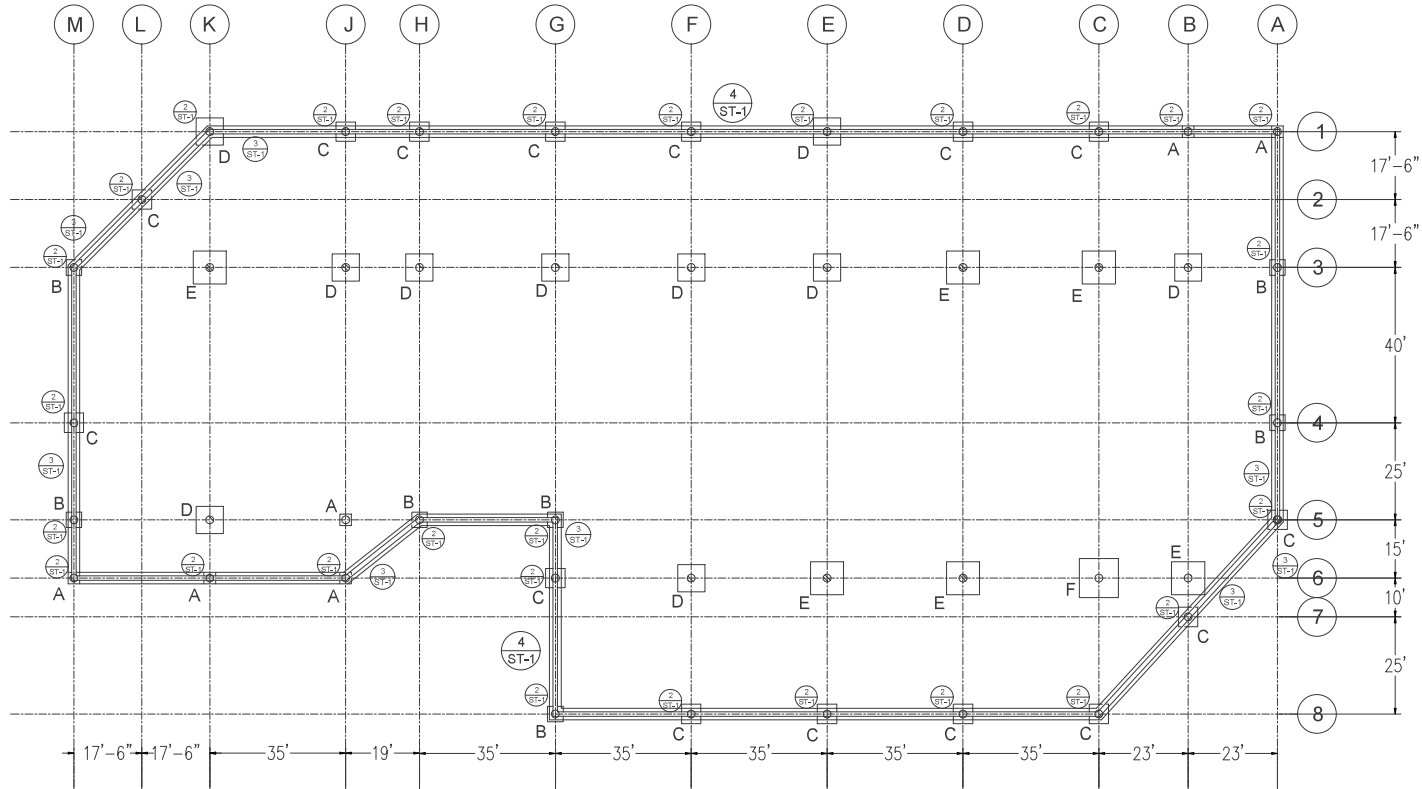
SHEET NO.
C0.05

Footing Schedule

Size	Note	Count
3 x 3	A	6
4 x 4	B	7
5 x 5	C	15
7 x 7	D	10
8.5 x 8.5	E	6
10 x 10	F	1
24" diameter pier		45

Reinforcement

Note	Top	Bottom
A	#5 12" OC	#6 12" OC
B	#5 12" OC	#7 12" OC
C	#5 12" OC	#7 12" OC
D	#5 12" OC	#8 12" OC
E	#5 12" OC	#8 12" OC
F	#5 12" OC	#8 12" OC



1 Foundation Layout Plan
Scale 1/16" = 1'-0"

2 Base Plate Detail
ST-1

3 Embedded Column Detail
ST-1

4 Concrete Cover Detail
ST-1

PROJECT: CEE:4850:MEC
DATE: 4/9/2021
DRAWN BY: LL
REVISION:

THE UNIVERSITY OF IOWA
4108 SEAMANS CENTER FOR THE ENVIRONMENTAL SCIENCES
ENGINEERING ARCHS. S. CAPITOL ST.
IOWA CITY, IOWA 52242
PHONE: 319.335.5647
FAX: 319.335.5660
EMAIL: civil-hawes@iowa.edu

CIVIL AND ENVIRONMENTAL ENGINEERING

IOWA
ENGINEERING

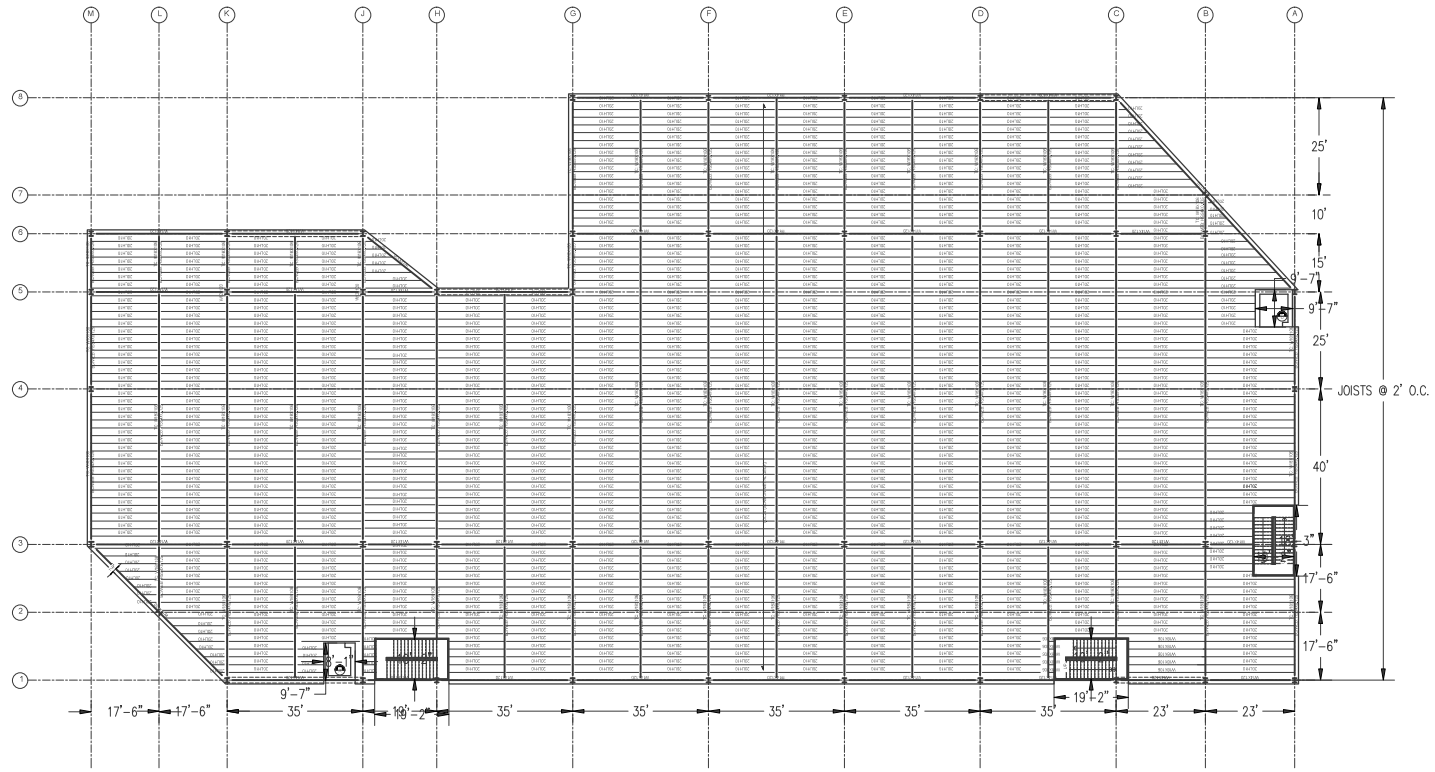
EDUCATIONAL - NOT FOR CONSTRUCTION

SAWMILL EVENT CENTER
2332 GRANT STREET
CLINTON, IOWA 52732

SHEET NAME: FOUNDATION PLAN
SHEET NO.: **S0.01**

FRAMING DETAIL NOTES:

1. W-SHAPES ARE A992 AND HAVE A YIELD STRENGTH OF 50 KSI
2. HSS-SHAPES ARE A500 GR. C AND HAVE A YIELD STRENGTH OF 46 KSI
3. TRUSS MEMBERS ARE CONNECTED WITH PIN CONNECTIONS
4. ELEVATOR AND STAIR SPECS. CAN BE FOUND ON DETAIL SHEET
5. JOISTS ARE CONNECTED DIRECTLY TO ELEVATOR SHAFT CONCRETE WALL



① Second Floor Framing Plan
Scale 1/16"=1'-0"



PROJECT:	CEE:4850;MEC
DATE:	4/9/2021
DRAWN BY:	LL
REVISION:	

THE UNIVERSITY OF IOWA
 CIVIL AND ENVIRONMENTAL ENGINEERING
 4108 SEAMANS CENTER FOR THE ADVANCEMENT OF CIVIL ENGINEERING
 IOWA CITY, IOWA 52242
 PHONE: 319.335.5647
 FAX: 319.335.5660
 EMAIL: civil-hewes@iowa.edu

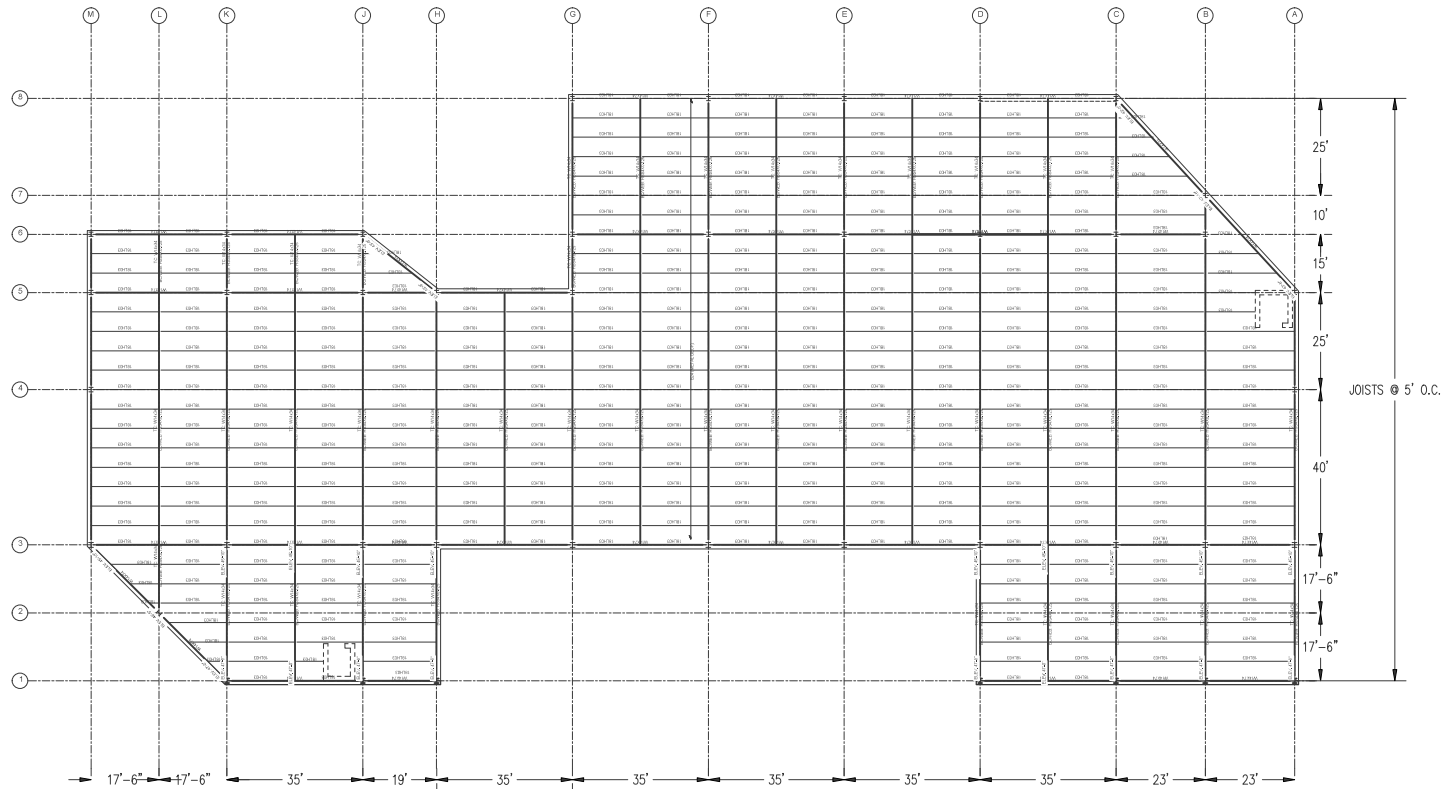


EDUCATIONAL - NOT FOR CONSTRUCTION

SAWMILL EVENT CENTER
 2332 GRANT STREET
 CLINTON, IOWA 52732

SHEET NAME
SECOND FLOOR FRAMING PLAN

SHEET NO.
S0.02



① Roof Framing Plan
Scale 1/16" = 1'-0"



PROJECT: CEE:4850;MEC
DATE: 4/9/2021
DRAWN BY: LL
REVISION:

THE UNIVERSITY OF IOWA
CIVIL AND ENVIRONMENTAL ENGINEERING
4105 SEAMANS CENTER FOR THE
ENGINEERING ARTS & SCIENCES
103 S. CAPITOL ST.
IOWA CITY, IOWA 52242
PHONE: 319.335.5647
FAX: 319.335.5660
EMAIL: civil-hawes@iowa.edu



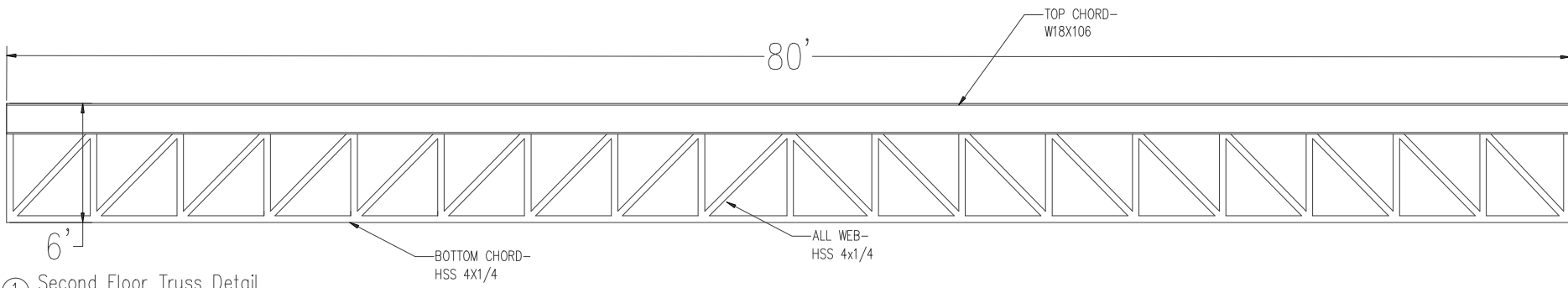
EDUCATIONAL - NOT FOR CONSTRUCTION

SAWMILL EVENT CENTER

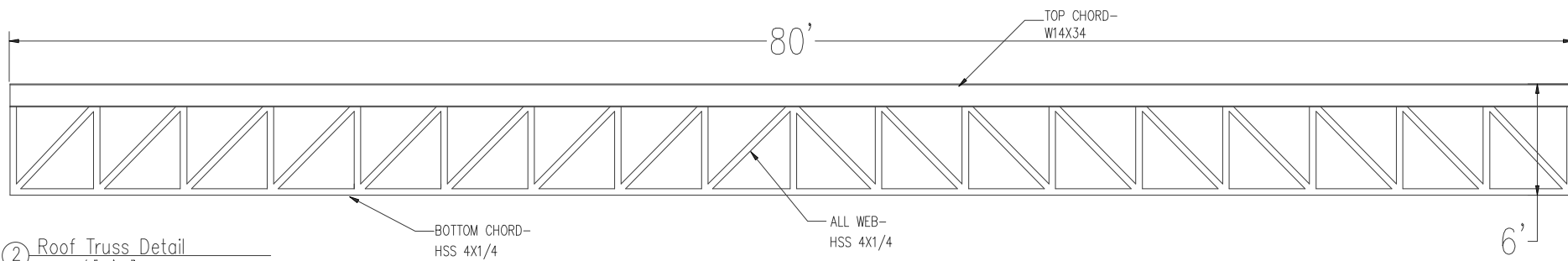
2232 GRANT STREET
CLINTON, IOWA 52732

SHEET NAME
ROOF FRAMING PLAN

SHEET NO.
S0.03



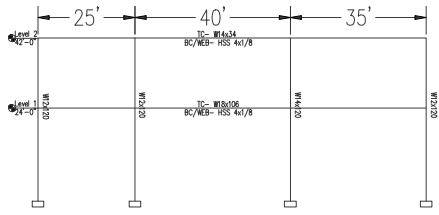
① Second Floor Truss Detail
Scale 3/8"=1'-0"



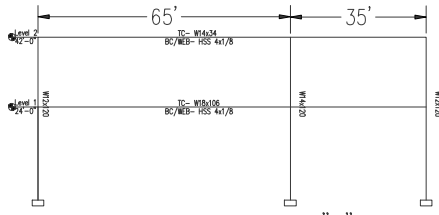
② Roof Truss Detail
Scale 3/8"=1'-0"

Scale 3/8"=1'-0"

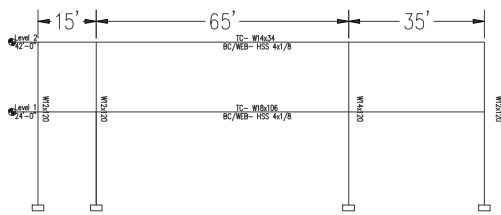
PROJECT:	CEE:4850;MEC
DATE :	4/9/2021
DRAWN BY:	LL
REVISION:	
THE UNIVERSITY OF IOWA CIVIL AND ENVIRONMENTAL ENGINEERING 4105 SEAMANS CENTER FOR THE STUDIES IN CIVIL AND ENVIRONMENTAL ENGINEERING ENGINEERING ARCHS. S. CAPITOL ST. IOWA CITY, IOWA 52242 PHONE: 319.335.5647 FAX: 319.335.5660 EMAIL: civil-hw@iowa.edu	
EDUCATIONAL - NOT FOR CONSTRUCTION	
SAWMILL EVENT CENTER 2332 GRANT STREET CLINTON, IOWA 52732	
SHEET NAME	FRAMING DETAILS
SHEET NO.	S0.04



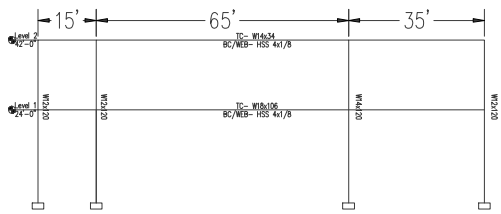
① Moment Frame at Grid "A"
Scale 1/16"-1'-0"



④ Moment Frame at Grid "H"
Scale 1/16"-1'-0"



⑦ Moment Frame at Grid "I"
Scale 1/16"-1'-0"



⑩ Moment Frame at Grid "J"
Scale 1/16"-1'-0"



⑥ Moment Frame at Grid "E"
Scale 1/16"-1'-0"



⑧ Moment Frame at Grid "F"
Scale 1/16"-1'-0"

⑨ Moment Frame at Grid "G"
Scale 1/16"-1'-0"

⑥ Moment Frame at Grid "E"
Scale 1/16"-1'-0"

⑥ Moment Frame at Grid "E"
Scale 1/16"-1'-0"

⑥ Moment Frame at Grid "E"
Scale 1/16"-1'-0"

⑥ Moment Frame at Grid "E"
Scale 1/16"-1'-0"

⑫ Typical Moment Connection
Scale 1 1/2"-1'-0"

PROJECT: CEE:4850;MEC
DATE: 4/9/2021
DRAWN BY: LL
REVISION:

THE UNIVERSITY OF IOWA
CIVIL AND ENVIRONMENTAL ENGINEERING
4105 SEAMANS CENTER FOR THE ENVIRONMENTAL ENGINEERING ARTS & SCIENCES CAPTOL ST
IOWA CITY, IOWA 52242
PHONE: 319.335.5647
FAX: 319.335.5660
EMAIL: civil-envees@iowa.edu

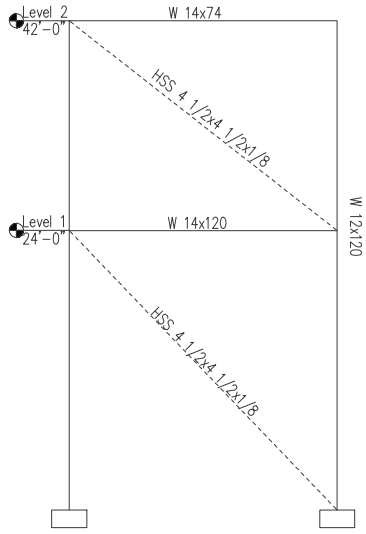
IOWA
UNIVERSITY
ENGINEERING

EDUCATIONAL - NOT FOR CONSTRUCTION

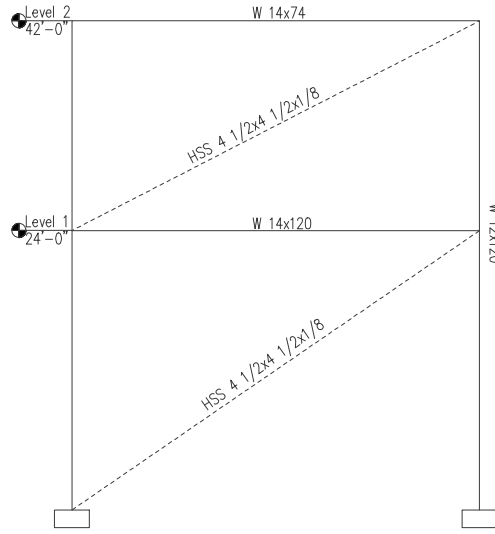
SAWMILL EVENT CENTER
2332 GRANT STREET
CLINTON, IOWA 52732

SHEET NAME
MOMENT FRAMING PLAN

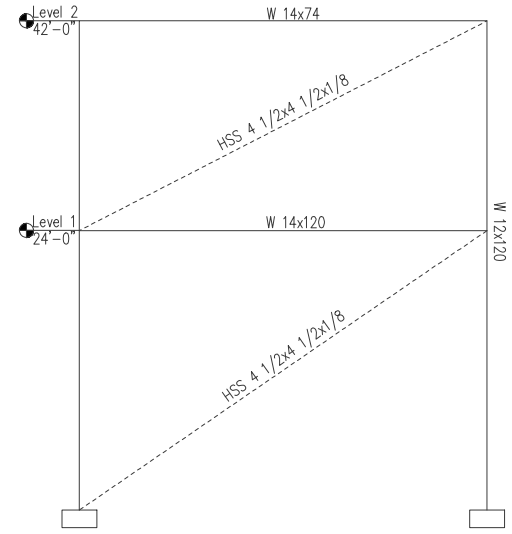
SHEET NO.
S0.05



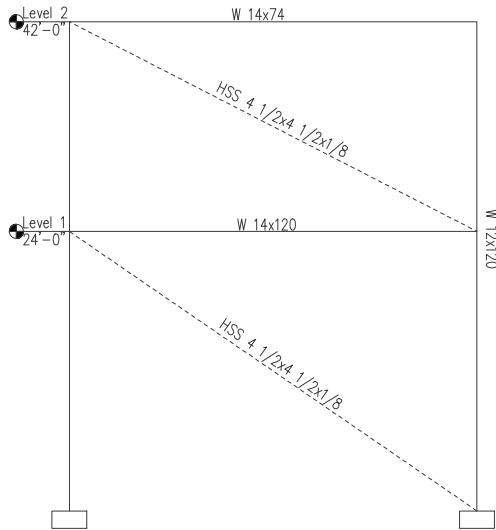
① Diagonal Bracing at Bay "B-1"
Scale 3/16"=1'-0"



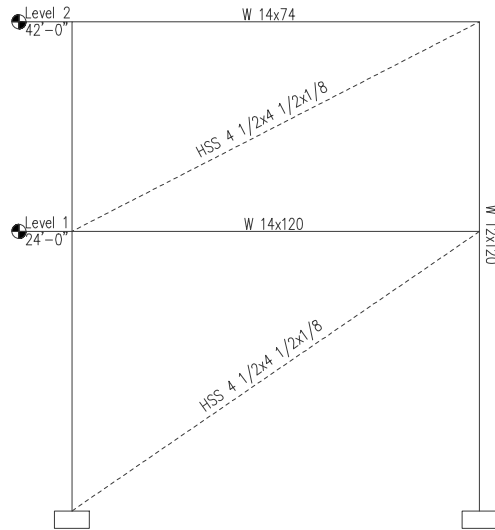
② Diagonal Bracing at Bay "C-8"
Scale 3/16"=1'-0"



③ Diagonal Bracing at Bay "I-6"
Scale 3/16"=1'-0"



④ Diagonal Bracing at Bay "I-1"
Scale 3/16"=1'-0"



⑤ Diagonal Bracing at Bay "G-5"
Scale 3/16"=1'-0"

PROJECT: CEE:4850;MEC
DATE: 4/9/2021
DRAWN BY: LL
REVISION:

THE UNIVERSITY OF IOWA
CIVIL AND ENVIRONMENTAL ENGINEERING
4105 SEAMANS CENTER FOR THE STUDIES
ENGINEERING ARCHES S. CAPITOL ST.
IOWA CITY, IOWA 52242
PHONE: 319.335.5647
FAX: 319.335.5660
EMAIL: civil-hawes@iowa.edu



EDUCATIONAL - NOT FOR CONSTRUCTION

SAWMILL EVENT CENTER

2232 GRANT STREET
CLINTON, IOWA 52732

SHEET NAME
BRACING
DETAILS

SHEET NO.

S0.06

COLUMN SCHEDULE																							
Roof 47'-0"																							
Level 2 42'-0"																							
Level 1 24'-0"	W12K120	W14K120	W12K120	W12K120	W12K120	W14K120	W12K120	W12K120	W12K120	W14K120	W12K120	W12K120	W12K120	W12K120	W12K120	W14K120	W12K120	W12K120	W14K120	W12K120			
Ground 0'-0"																							
Column Locations	A-1	A-3	A-4	A-5	B-1	B-3	B-6	B-7	C-1	C-3	C-6	C-6	D-1	D-3	D-6	D-8	E-1	E-3	E-6	E-8	F-1	F-3	F-6

COLUMN SCHEDULE (CONT'D)																							
																					Roof 47'-0"		
																					Level 2 42'-0"		
																					Level 1 24'-0"		
																					Ground 0'-0"		
F-8	G-1	G-3	G-5	G-6	G-8	H-1	H-3	H-6	I-1	I-3	I-5	I-6	J-1	J-3	J-5	J-6	K-2	L-3	L-4	L-5	L-6		

PROJECT: CEE:4850;MEC
DATE: 4/9/2021
DRAWN BY: LL
REVISION:

THE UNIVERSITY OF IOWA
CIVIL AND ENVIRONMENTAL ENGINEERING
4105 SEAMANS CENTER FOR THE ENVIRONMENTAL SCIENCES
ENGINEERING ARCHITECTURE CENTER
IOWA CITY, IOWA 52242
PHONE: 319.335.5647
FAX: 319.335.5660
EMAIL: civil-hawes@iowa.edu

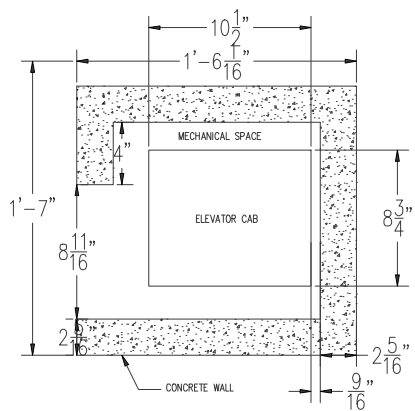
IOWA
ENGINEERING

EDUCATIONAL - NOT FOR CONSTRUCTION

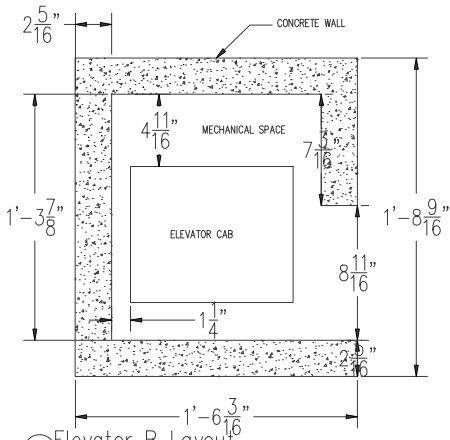
SAWMILL EVENT CENTER
2337 GRANT STREET
CLINTON, IOWA 52732

SHEET NAME
COLUMN SCHEDULE

SHEET NO.
S0.07



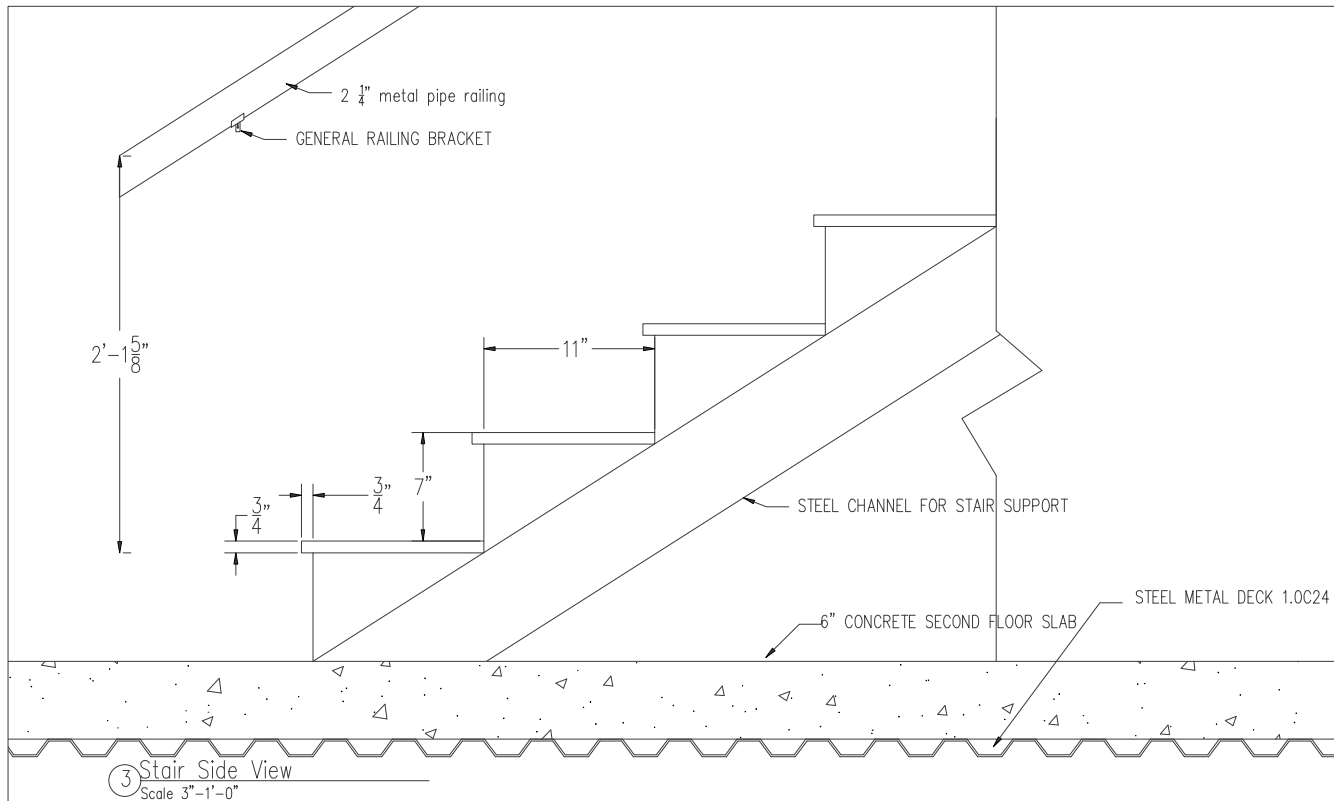
① Elevator A Layout
Scale 1/2"=1'-0"



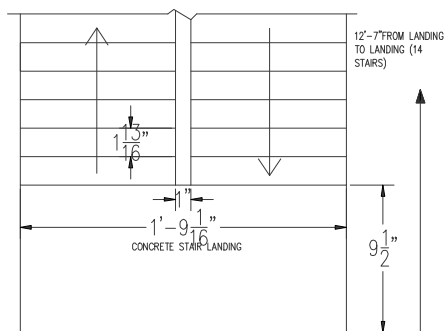
② Elevator B Layout
Scale 1/2"=1'-0"

ELEVATOR NOTES:

1. ORION MODEL 4854 ELEVATOR SERVES TWO FLOORS, WITH OVERHEAD SPACE AND PIT ACCOUNTED FOR IN DESIGN
2. FOR FOUNDATION SPECS OF EACH ELEVATOR, SEE FOUNDATION DETAILS



③ Stair Side View
Scale 3"=1'-0"

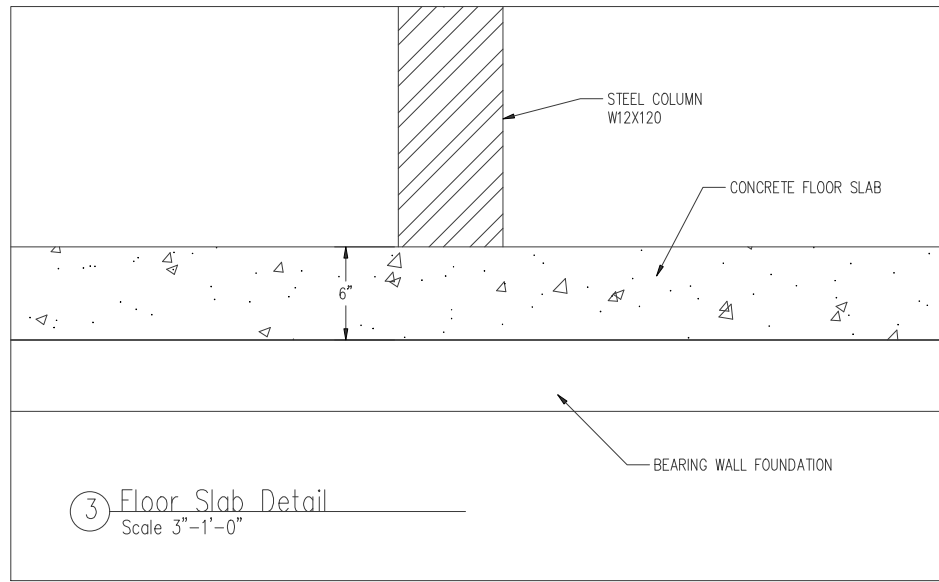
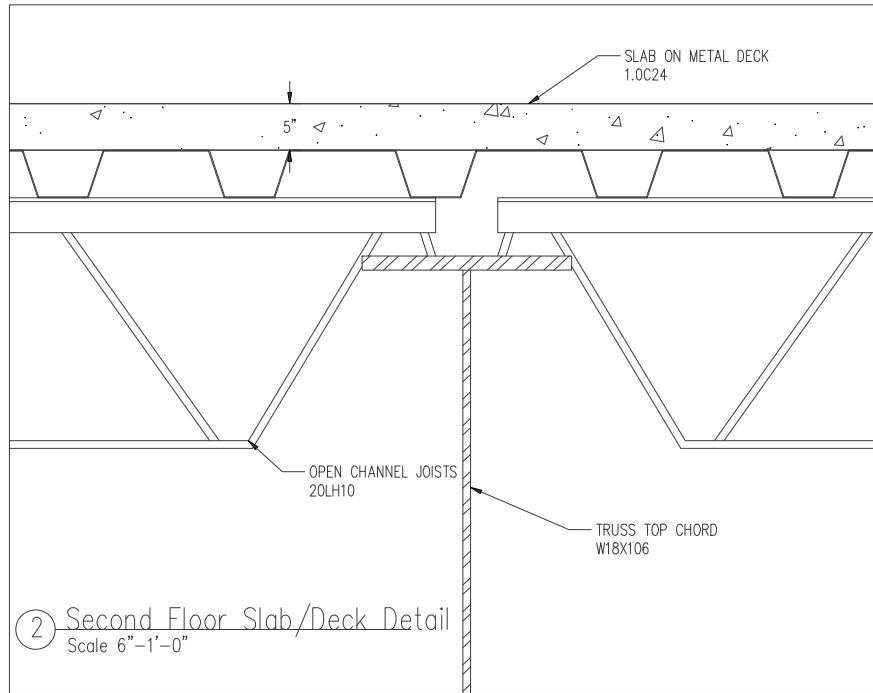
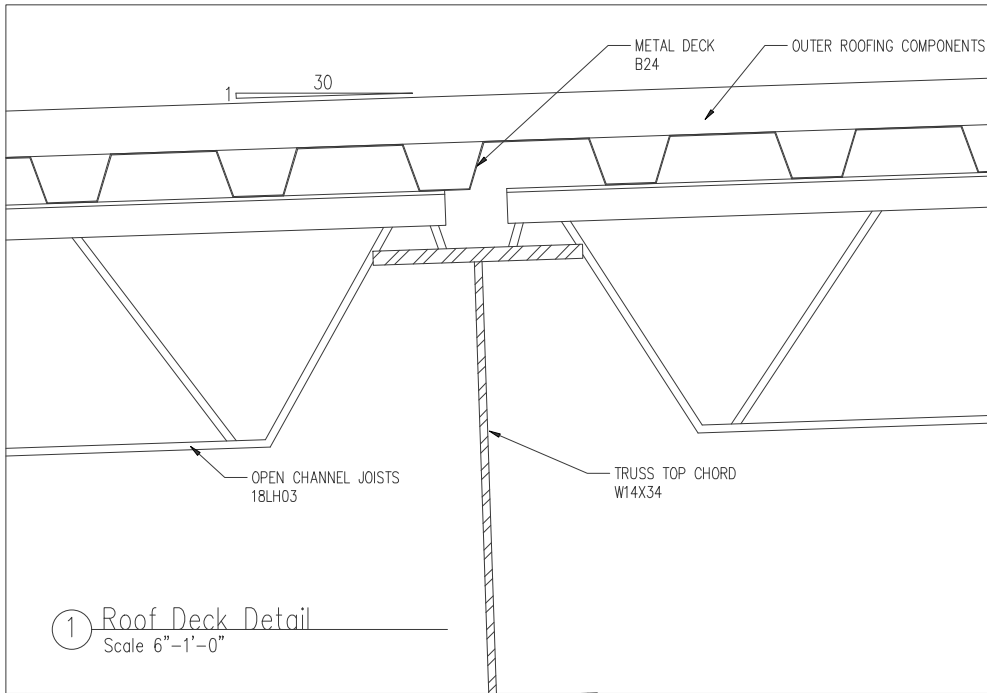


④ Stairwell Top View
Scale 1/2"=1'-0"

STAIR NOTES:

1. STAIRS FOLLOW GUIDELINES IN ACCORDANCE TO THE INTERNATIONAL BUILDING CODE.
2. THREE STAIRWELLS PROVIDED FOR ADEQUATE FIRE SAFETY
3. EACH STAIRWELL HAS THREE FLIGHTS AND TWO LANDINGS TO SPAN 24' TO THE SECOND LEVEL, EACH FLIGHT HAS 13 STAIRS.

PROJECT:	CEE:4850;MEC
DATE:	4/9/2021
DRAWN BY:	LL
REVISION:	
THE UNIVERSITY OF IOWA CIVIL AND ENVIRONMENTAL ENGINEERING 4105 SEAMANS CENTER FOR THE ENVIRONMENTAL SCIENCES ENGINEERING ARCHS. & CAPTOL ST. IOWA CITY, IOWA 52242 PHONE: 319.335.5647 FAX: 319.335.5660 EMAIL: civil-hawes@iowa.edu	
IOWA ENGINEERING	
EDUCATIONAL - NOT FOR CONSTRUCTION	
SAWMILL EVENT CENTER 2332 GRANT STREET CLINTON, IOWA 52732	
SHEET NAME:	STAIR & ELEVATOR DETAILS
SHEET NO.:	S0.08



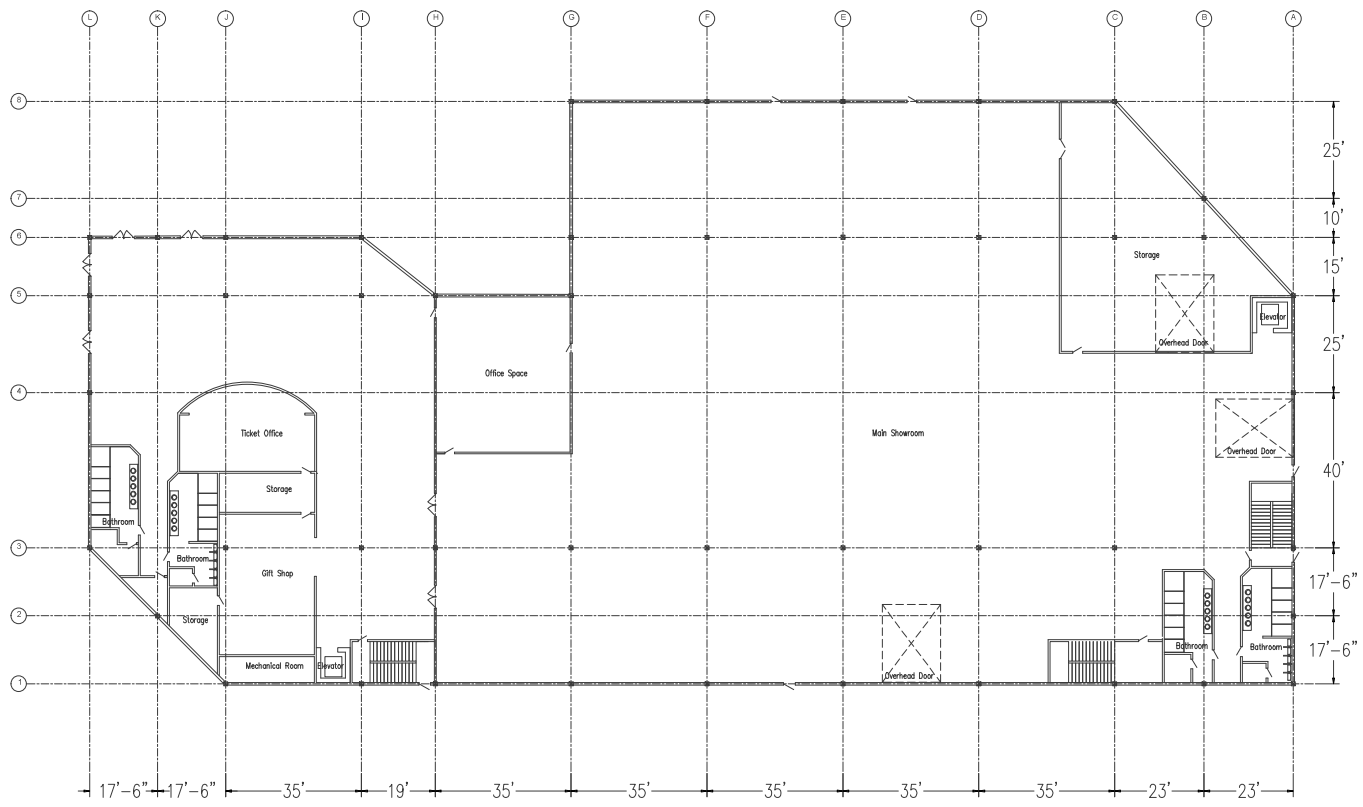
PROJECT:	CEE:4850;MEC
DATE:	4/9/2021
DRAWN BY:	LL
REVISION:	
THE UNIVERSITY OF IOWA CIVIL AND ENVIRONMENTAL ENGINEERING 4105 SEAMANS CENTER FOR THE STUDIES ENGINEERING ARCHITECTURE CENTER IOWA CITY, IOWA 52242 PHONE: 319.335.5647 FAX: 319.335.5660 EMAIL: civil-hawes@iowa.edu	
IOWA ENGINEERING	
EDUCATIONAL - NOT FOR CONSTRUCTION	
SAWMILL EVENT CENTER 2332 GRANT STREET CLINTON, IOWA 52732	
SHEET NAME	SLAB DETAIL
SHEET NO.	S0.09

AO.01
3

AO.01
1

AO.01
2

AO.01
4



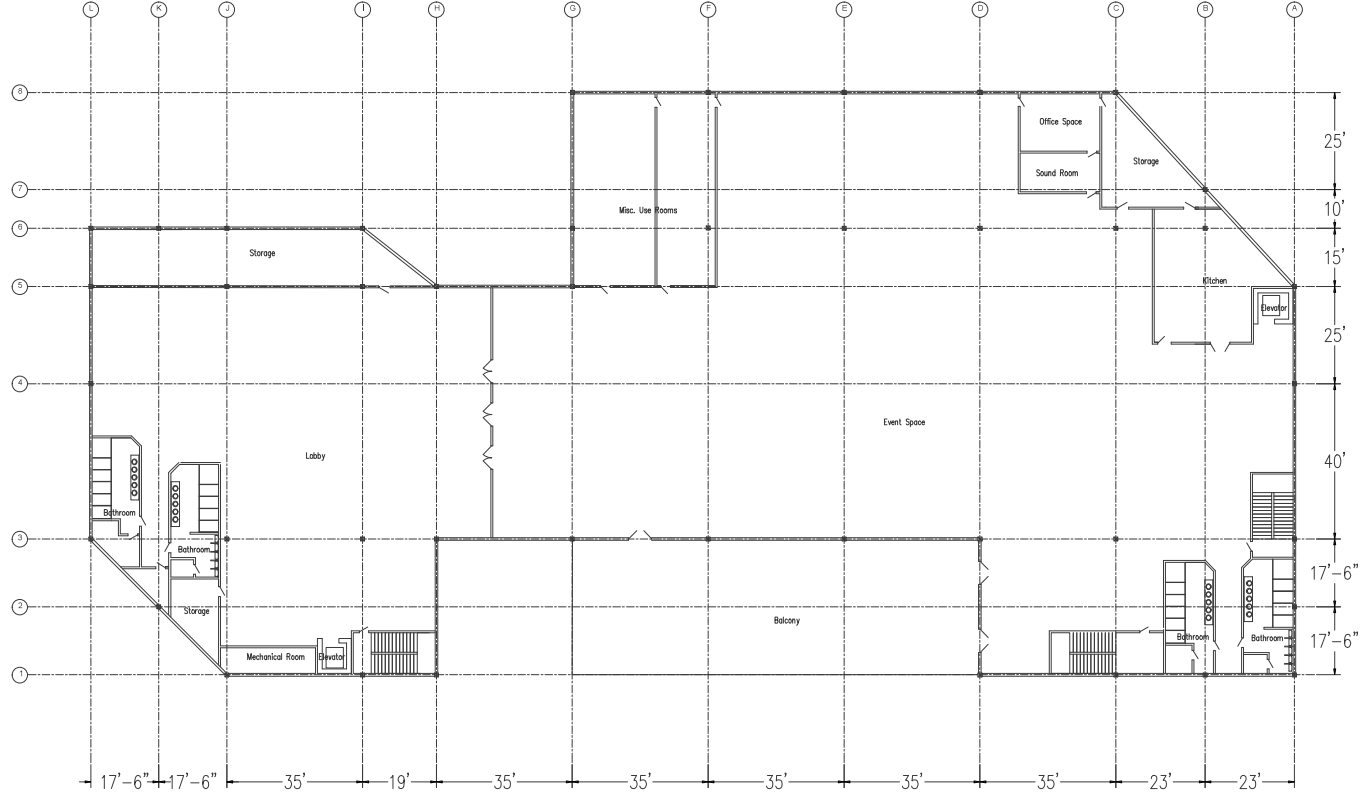
PROJECT:	CEE:4850;MEC
DATE:	4/9/2021
DRAWN BY:	LL
REVISION:	
<p>THE UNIVERSITY OF IOWA CIVIL AND ENVIRONMENTAL ENGINEERING 4105 SEAMANS CENTER FOR THE ENVIRONMENTAL ENGINEERING ARTS & SCIENCES ENGINEERING ARTS & SCIENCES CAPTOL ST IOWA CITY, IOWA 52242 PHONE: 319.335.5647 FAX: 319.335.5660 EMAIL: civil-hawes@iowa.edu</p>	
<p>IOWA ENGINEERING</p>	
<p>EDUCATIONAL - NOT FOR CONSTRUCTION</p>	
<p>SAWMILL EVENT CENTER 2332 GRANT STREET CLINTON, IOWA 52732</p>	
SHEET NAME	FIRST FLOOR PLAN
SHEET NO.	A0.01

A0.01
3

A0.01
1

A0.01
2

A0.01
4



PROJECT: CEE:4850;MEC
DATE: 4/9/2021
DRAWN BY: LL
REVISION:

THE UNIVERSITY OF IOWA
4105 SEAMANS CENTER FOR THE
ENGINEERING ARTS & SCIENCES
IOWA CITY, IOWA 52242
PHONE: 319.335.5647
FAX: 319.335.5660
EMAIL: civil-hawes@iowa.edu

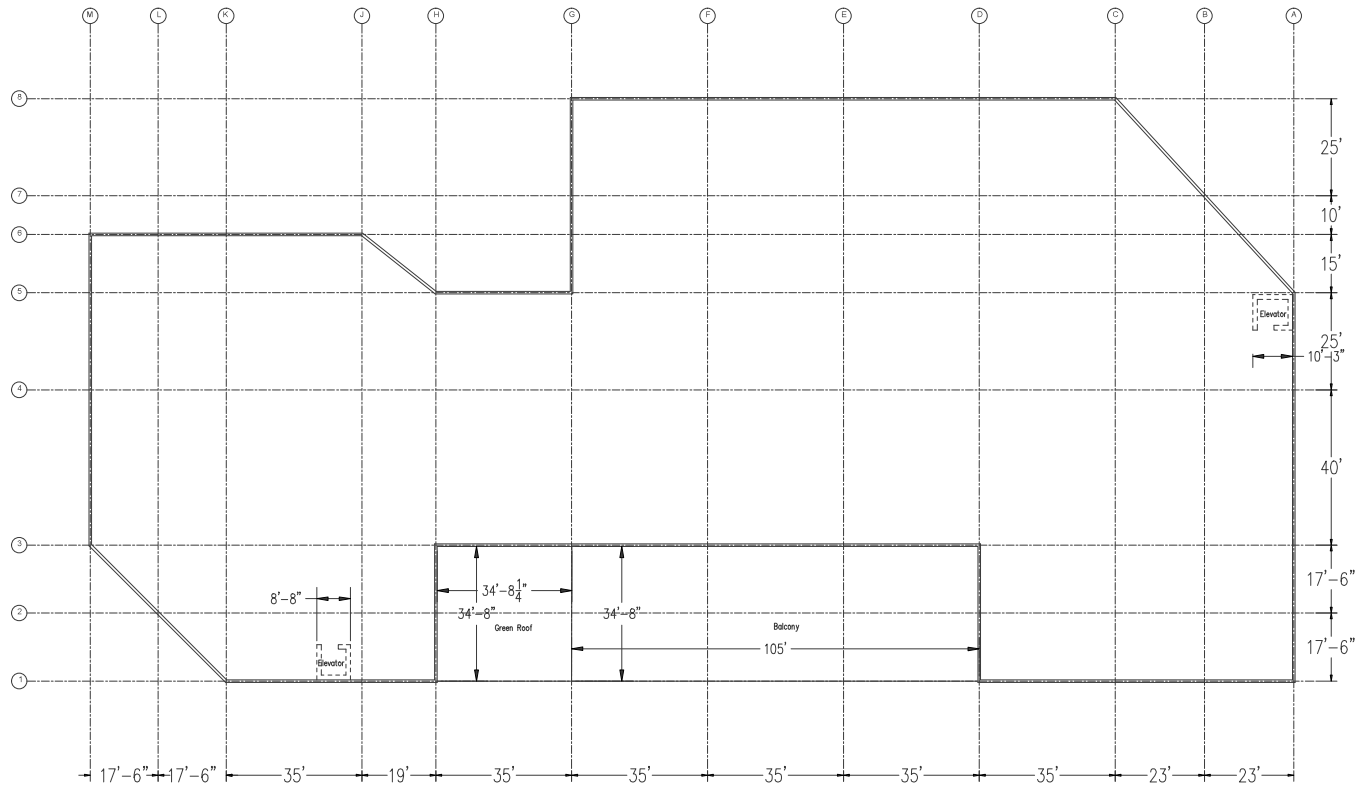
IOWA
ENGINEERING

EDUCATIONAL - NOT
FOR CONSTRUCTION

SAWMILL EVENT CENTER
2232 GRANT STREET
CLINTON, IOWA 52732

SHEET NAME
SECOND FLOOR
PLAN

SHEET NO.
A0.02



① Roof Plan
Scale 1/16" = 1'-0"



PROJECT:	CEE:4850;MEC
DATE:	4/9/2021
DRAWN BY:	LL
REVISION:	

THE UNIVERSITY OF IOWA
CIVIL AND ENVIRONMENTAL ENGINEERING
 4108 SEAMANS CENTER FOR THE STUDIES
 ENGINEERING ARCH 03 S. CAPITOL ST.
 IOWA CITY, IOWA 52242
 PHONE: 319.335.5647
 FAX: 319.335.5660
 EMAIL: civil-hewes@iowa.edu

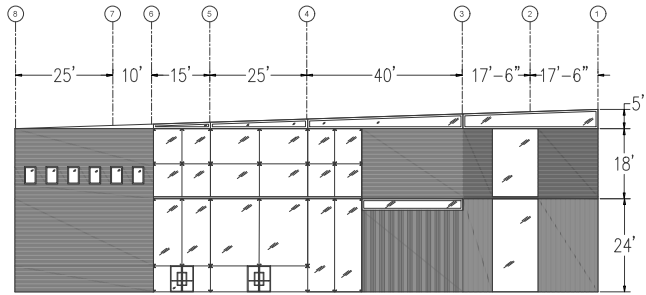
IOWA
ENGINEERING

EDUCATIONAL - NOT FOR CONSTRUCTION

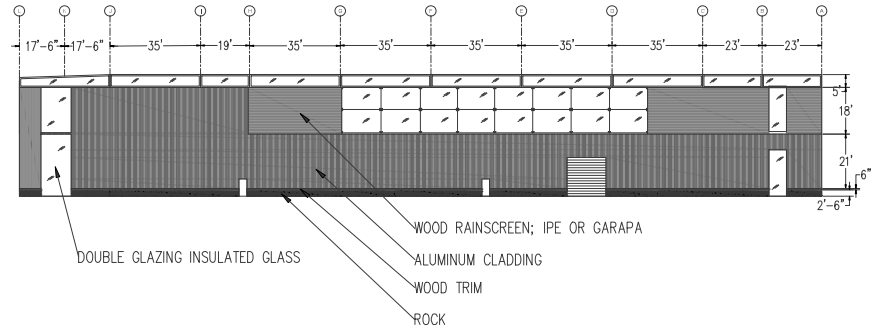
SAWMILL EVENT CENTER
 2332 GRANT STREET
 CLINTON, IOWA 52732

SHEET NAME
 ROOF PLAN

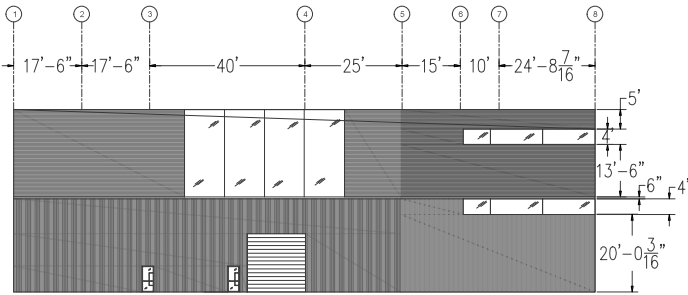
SHEET NO.
A0.03



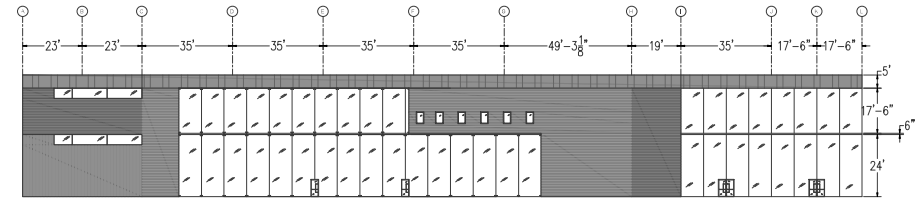
2 FRONT ELEVATION
 $1/16" = 1'-0"$



1 EAST ELEVATION
 $3/32" = 1'-0"$



4 REAR ELEVATION
 $1/16" = 1'-0"$



3 WEST ELEVATION
 $3/32" = 1'-0"$

PROJECT:	CEE:4850;MEC
DATE:	4/9/2021
DRAWN BY:	EV
REVISION:	

THE UNIVERSITY OF IOWA
CIVIL AND ENVIRONMENTAL ENGINEERING
 4105 SEAMANS CENTER FOR THE PHYSICAL SCIENCES
 ENGINEERING ARCHITECTURE CENTER
 IOWA CITY, IOWA 52242
 PHONE: 319.335.5647
 FAX: 319.335.5660
 EMAIL: civil-hawes@iowa.edu

IOWA
 ENGINEERING

EDUCATIONAL - NOT FOR CONSTRUCTION

SAWMILL EVENT CENTER
 2332 GRANT STREET
 CLINTON, IOWA 52732

SHEET NAME
 BUILDING ELEVATIONS

SHEET NO.
A0.04