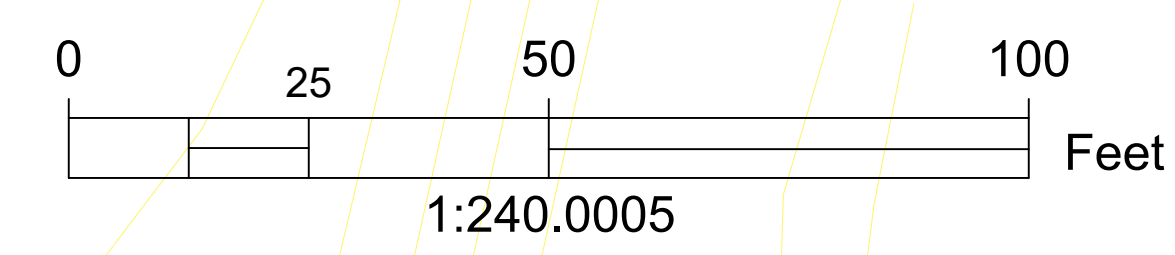
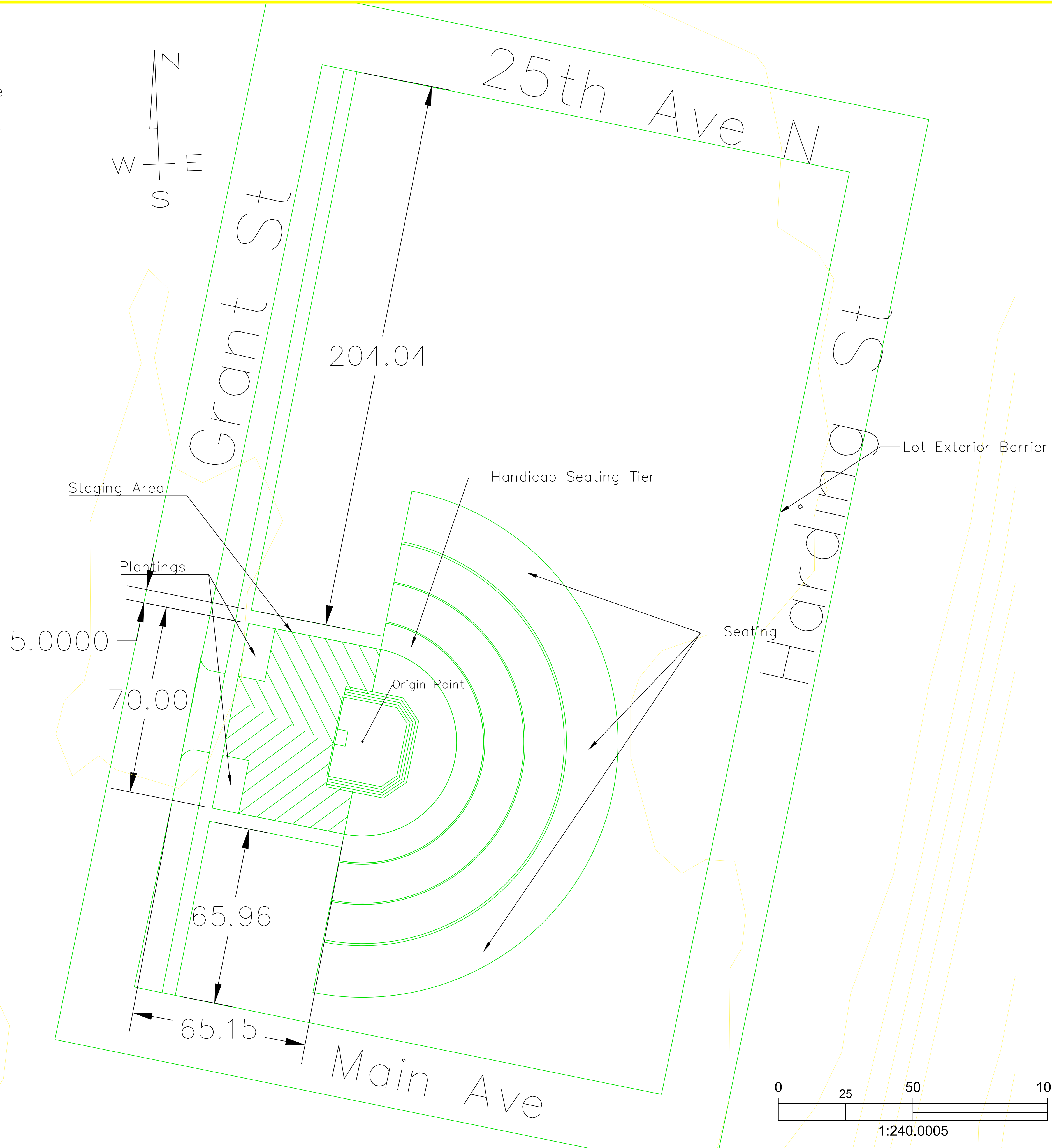


Plan Notes:

- Sidewalk will extend across Main Ave to the south.
- Concrete for sidewalks are 4 in PCC
- Concrete for staging area and lift zone is 10 in with a compressive strength of 6000 psi minimum
- Subbase of all concrete at 120 pci
- Picnic style seating will be featured on the top tier
- Lower tiers will have open green space and a handicap accessible paved space
- Staging area designed to push water towards Grant St
- Plantings help control staging area storm water runoff



PROJECT:	CEE: 4850
DATE :	4/9/21
DRAWN BY:	M&M Engineering
REVISION:	

**THE UNIVERSITY OF IOWA**  
**CIVIL AND ENVIRONMENTAL ENGINEERING**  
 4105 SEAMANS CENTER FOR THE  
 ENGINEERING ARTS AND SCIENCES  
 103 S CAPITOL ST  
 IOWA CITY, IOWA 52242  
 PHONE: 319.335.5647  
 FAX: 319.335.5660  
 EMAIL: civil-hawks@iowa.edu

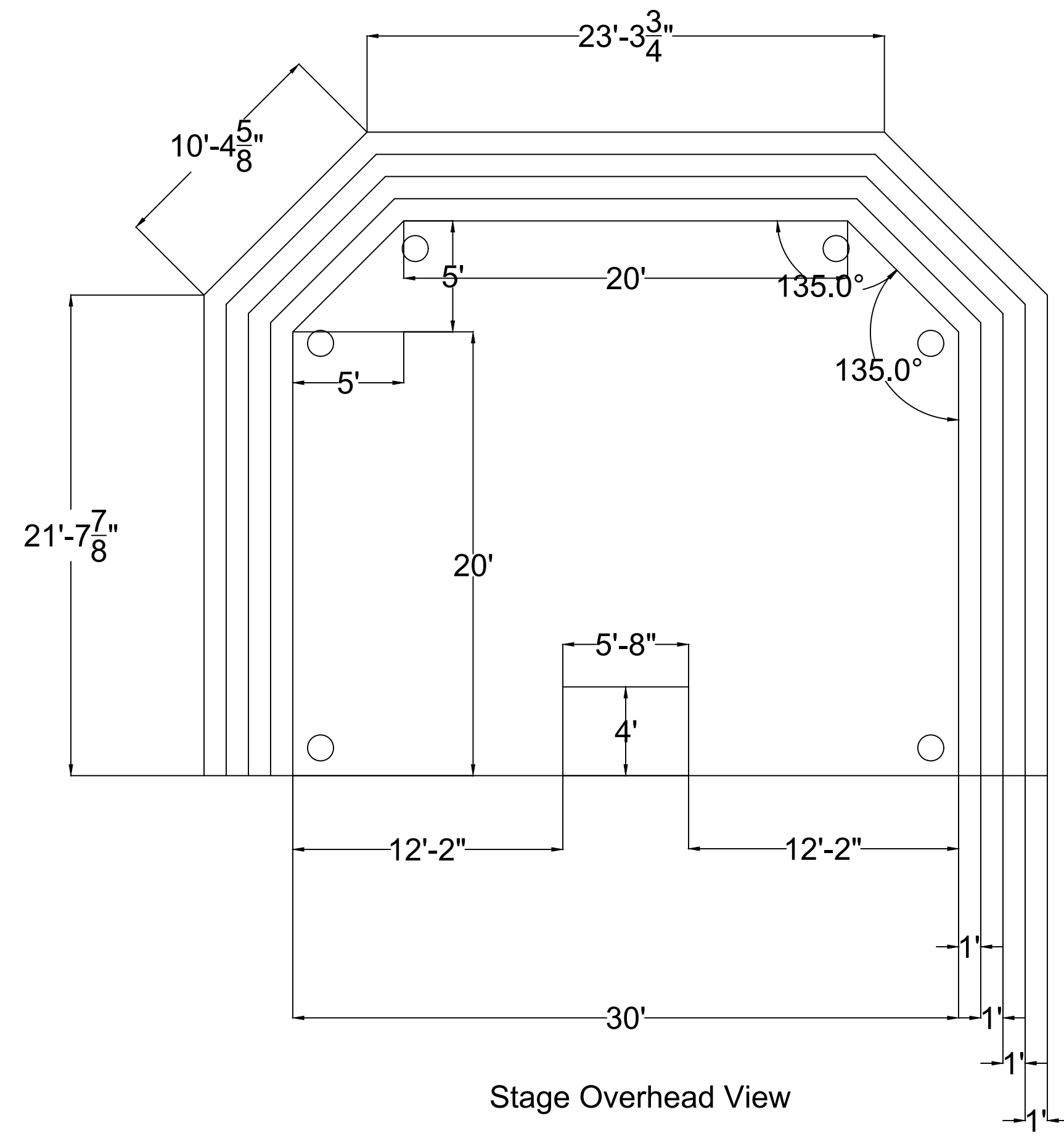


CAUTIONAL - NOT  
 CONSTRUCTION

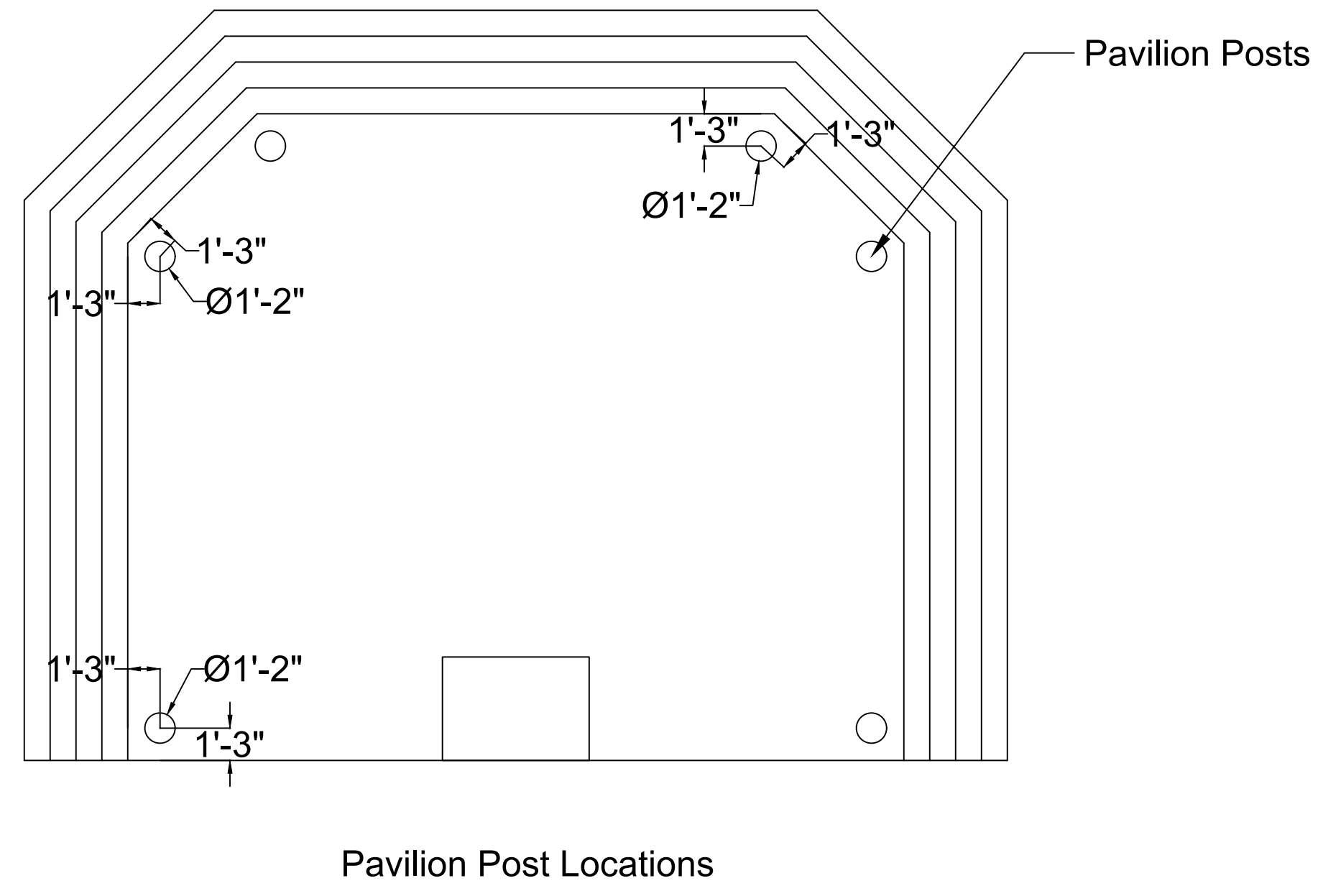
**Clinton Sawmill Amphitheater**  
 2231 Grant Street  
 Clinton, IA 52732

SHEET NAME  
 Site Plan

SHEET NO.  
**01**



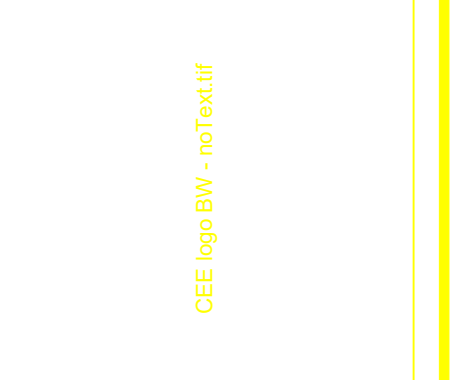
Stage Overhead View



Pavilion Post Locations

PROJECT:	CEE: 4850
DATE :	4/9/21
DRAWN BY:	M&M Engineering
REVISION:	

**THE UNIVERSITY OF IOWA**  
**CIVIL AND ENVIRONMENTAL ENGINEERING**  
 4105 SEAMANS CENTER FOR THE  
 ENGINEERING ARTS AND SCIENCES  
 103 S CAPITOL ST  
 IOWA CITY, IOWA 52242  
 PHONE: 319.335.5647  
 FAX: 319.335.5660  
 EMAIL: [civil-hawks@iowa.edu](mailto:civil-hawks@iowa.edu)



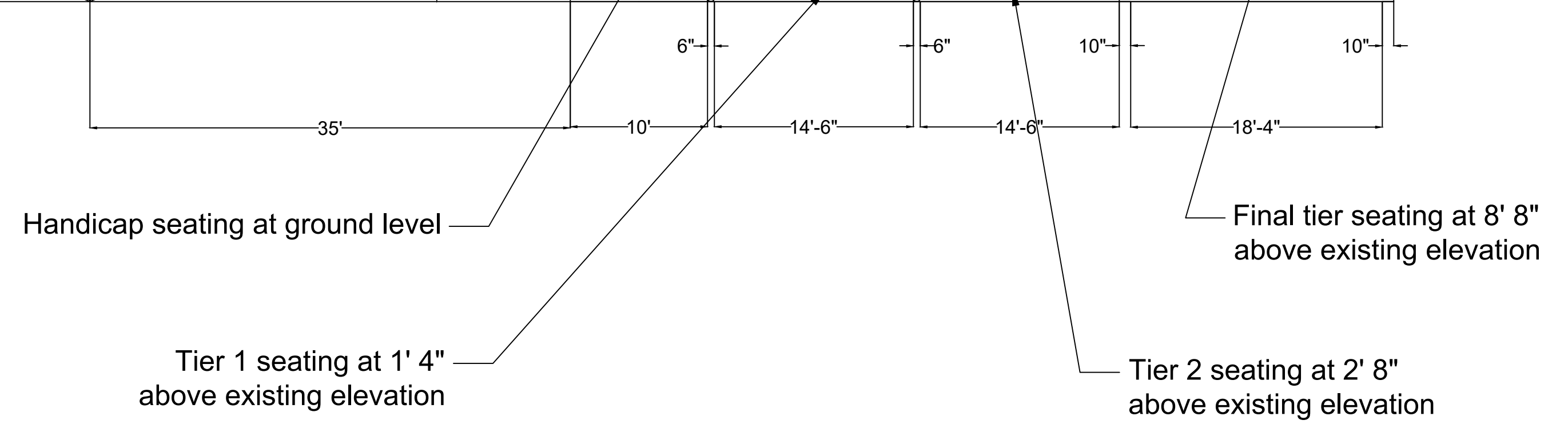
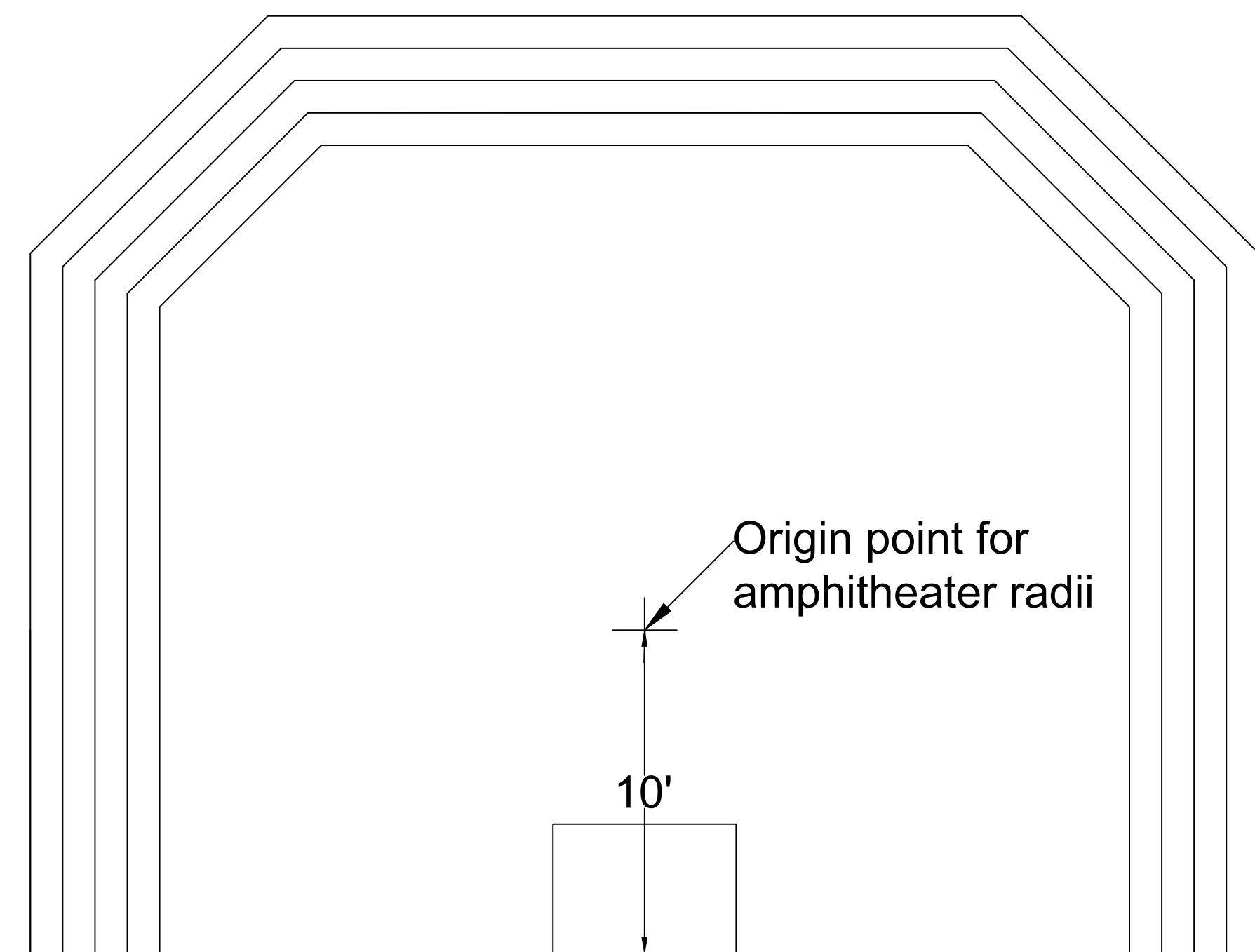
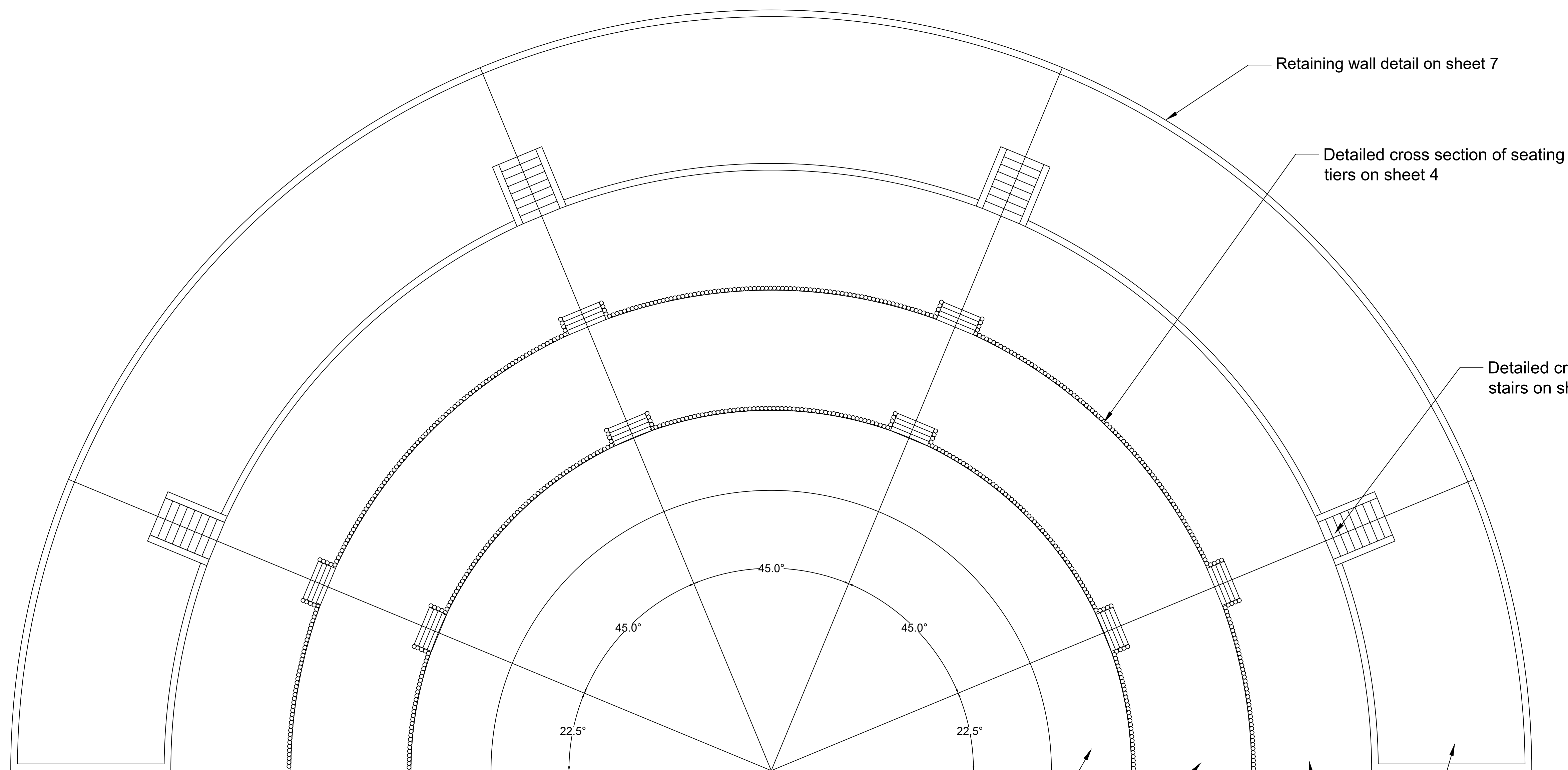
PROVISIONAL - NOT FOR CONSTRUCTION

**Clinton Sawmill Amphitheater**

2231 Grant Street  
 Clinton, IA 52732

SHEET NAME  
 Stage Dimensions

SHEET NO.  
**02**



Retaining wall detail on sheet 7

Detailed cross section of seating tiers on sheet 4

Detailed cross section of stairs on sheet 6

Handicap seating at ground level

Tier 1 seating at 1' 4" above existing elevation

Tier 2 seating at 2' 8" above existing elevation

Final tier seating at 8' 8" above existing elevation

PROJECT:	CEE: 4850
DATE :	4/9/21
DRAWN BY:	M&M Engineering
REVISION:	

**THE UNIVERSITY OF IOWA**  
**CIVIL AND ENVIRONMENTAL ENGINEERING**  
 4105 SEAMANS CENTER FOR THE  
 ENGINEERING ARTS AND SCIENCES  
 103 S CAPITOL ST  
 IOWA CITY, IOWA 52242  
 PHONE: 319.335.5647  
 FAX: 319.335.5660  
 EMAIL: civil-hawks@iowa.edu



EDUCATIONAL - NOT  
 CONSTRUCTION

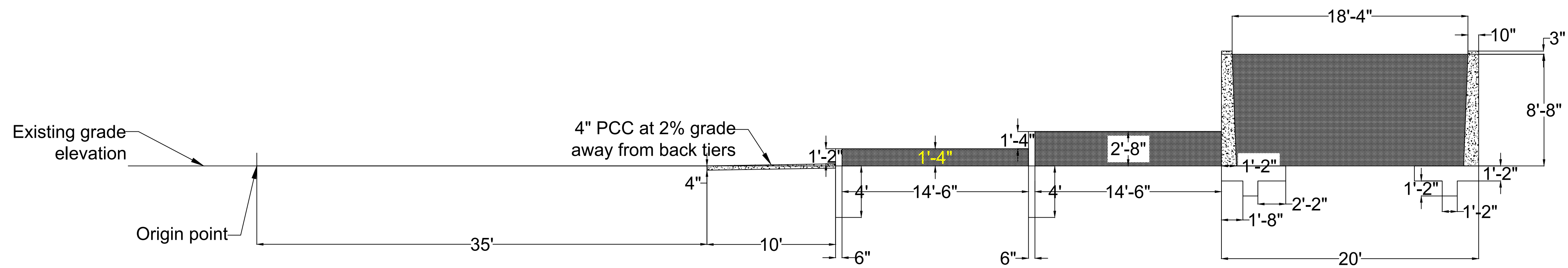
**Clinton Sawmill Amphitheater**

2231 Grant Street  
 Clinton, IA 52732

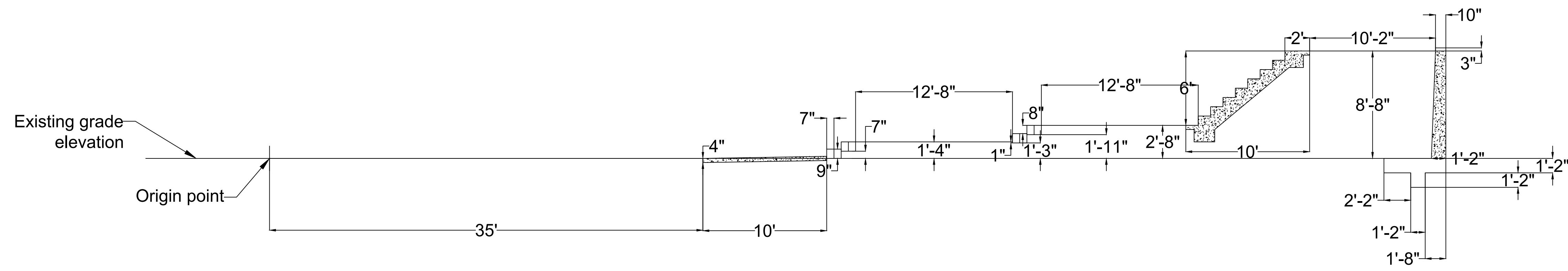
SHEET NAME  
 Seating Overview

SHEET NO.  
**03**





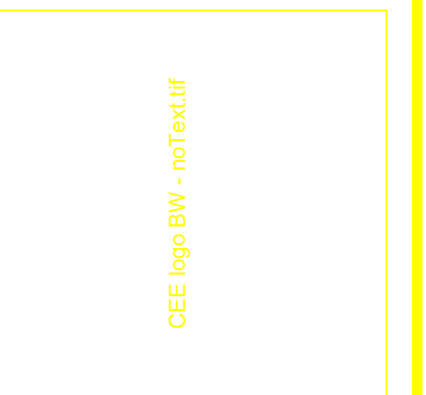
Amphitheater Cross-Section (No Stairs)



Amphitheater Cross-Section (Stairs)

PROJECT:	CEE: 4850
DATE :	4/9/21
DRAWN BY:	M&M Engineering
REVISION:	

**THE UNIVERSITY OF IOWA**  
**CIVIL AND ENVIRONMENTAL ENGINEERING**  
 4105 SEAMANS CENTER FOR THE  
 ENGINEERING ARTS AND SCIENCES  
 103 S CAPITOL ST  
 IOWA CITY, IOWA 52242  
 PHONE: 319.335.5647  
 FAX: 319.335.5660  
 EMAIL: [civil-hawks@iowa.edu](mailto:civil-hawks@iowa.edu)



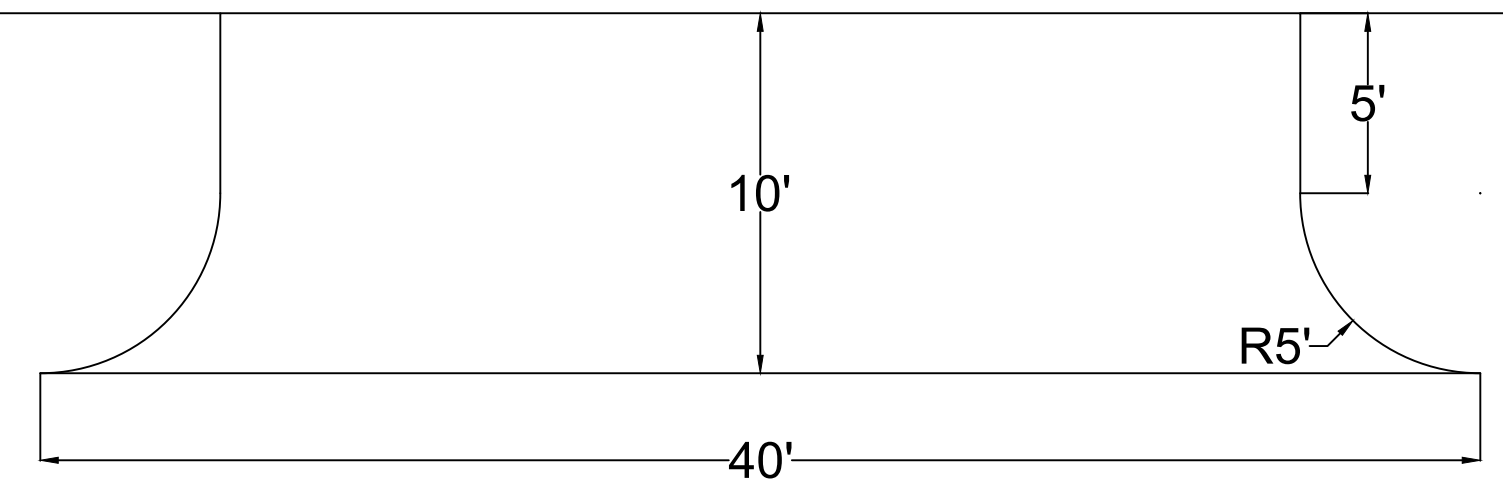
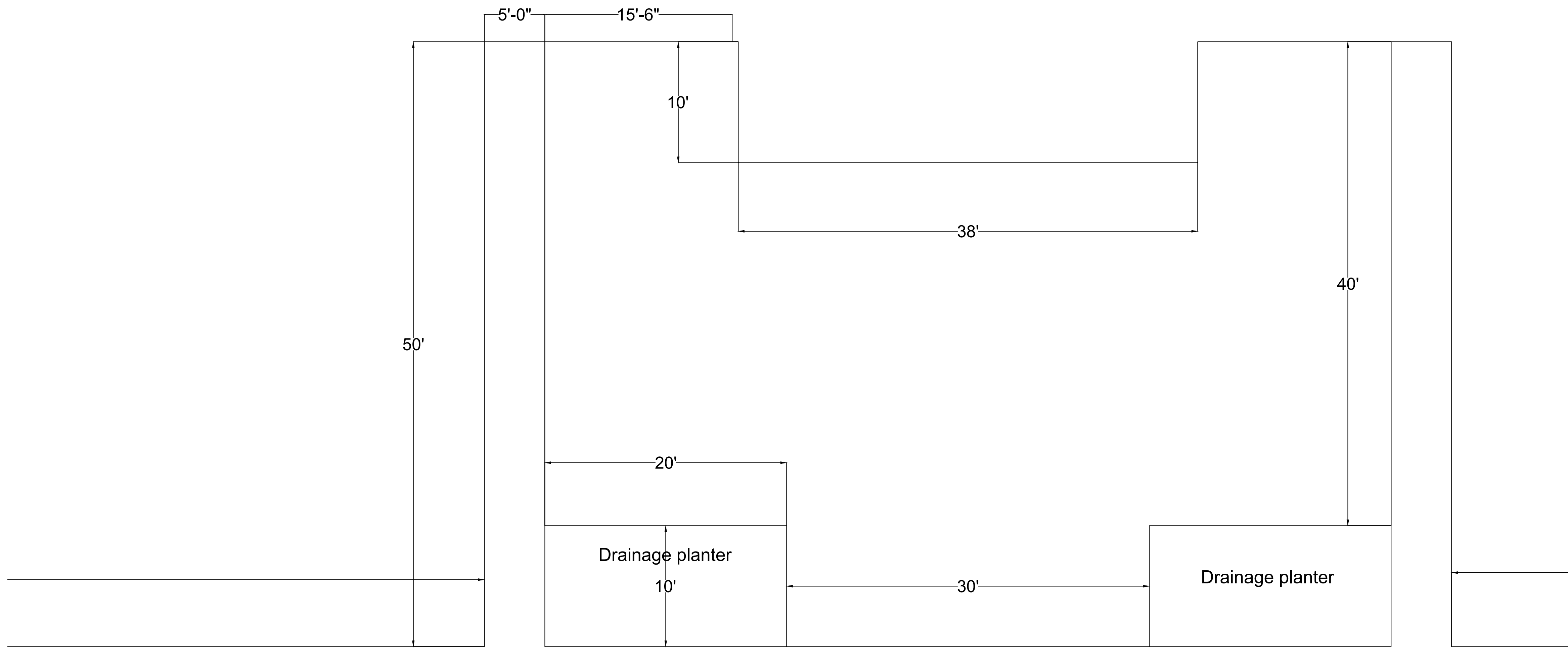
EDUCATIONAL - NOT  
 CONSTRUCTION

**Clinton Sawmill Amphitheater**

2231 Grant Street  
 Clinton, IA 52732

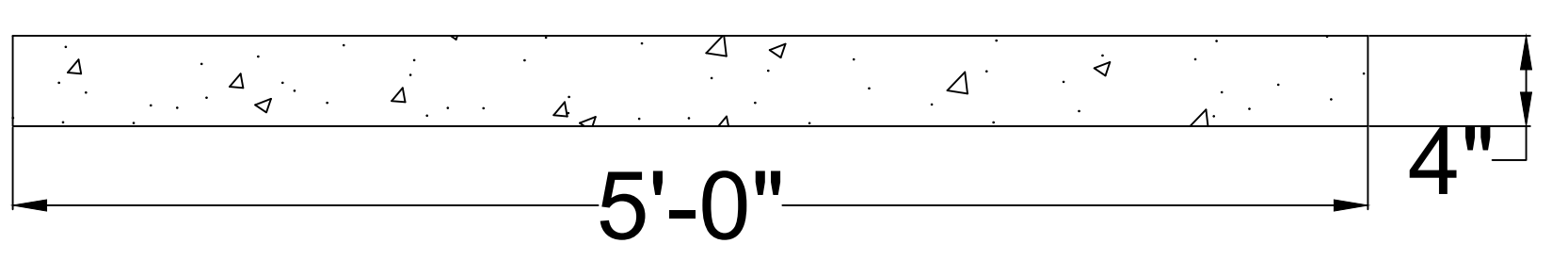
SHEET NAME  
 Seating Detail

SHEET NO.  
**04**

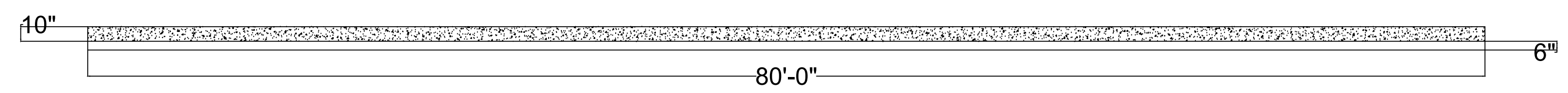


Staging area and sidewalk overview

Note: Width and angle of sidewalk varies



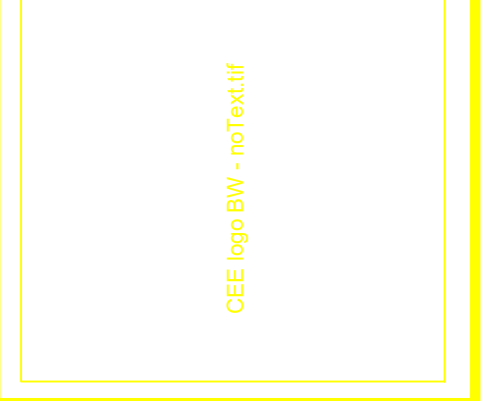
Sidewalk PCC



Staging Area PCC

PROJECT:	CEE: 4850
DATE :	4/9/21
DRAWN BY:	M&M Engineering
REVISION:	

**THE UNIVERSITY OF IOWA**  
**CIVIL AND ENVIRONMENTAL ENGINEERING**  
 4105 SEAMANS CENTER FOR THE  
 ENGINEERING ARTS AND SCIENCES  
 103 S CAPITOL ST  
 IOWA CITY, IOWA 52242  
 PHONE: 319.335.5647  
 FAX: 319.335.5660  
 EMAIL: [civil-hawks@iowa.edu](mailto:civil-hawks@iowa.edu)



EDUCATIONAL - NOT  
 CONSTRUCTION

**Clinton Sawmill Amphitheater**

2231 Grant Street  
 Clinton, IA 52732

SHEET NAME  
 Loading and Sidewalk

SHEET NO.  
**05**

PROJECT:	CEE: 4850
DATE :	4/9/21
DRAWN BY:	M&M Engineering
REVISION:	

**THE UNIVERSITY OF IOWA**  
**CIVIL AND ENVIRONMENTAL ENGINEERING**  
 4105 SEAMANS CENTER FOR THE  
 ENGINEERING ARTS AND SCIENCES  
 103 S CAPITOL ST  
 IOWA CITY, IOWA 52242  
 PHONE: 319.335.5647  
 FAX: 319.335.5660  
 EMAIL: civil-hawks@iowa.edu



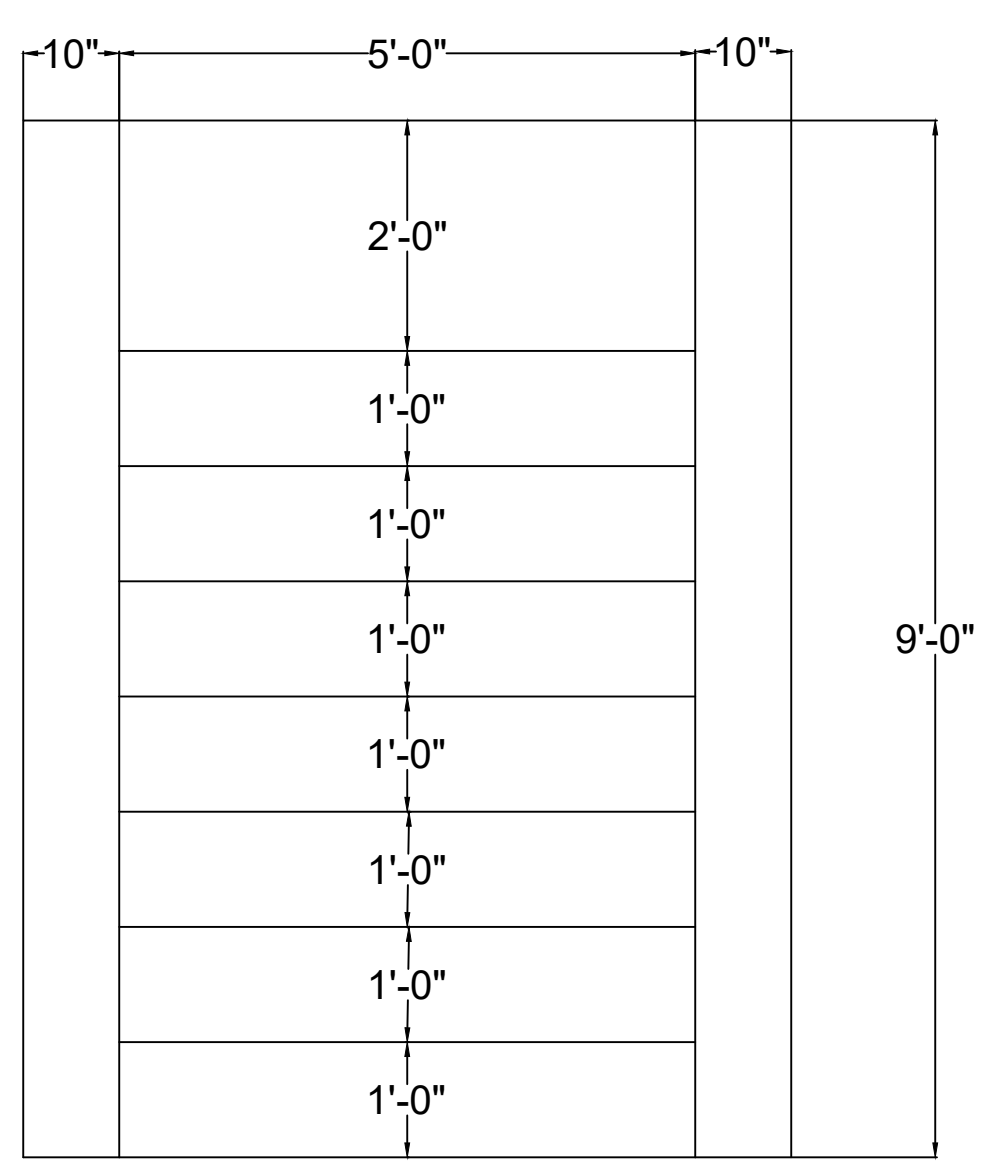
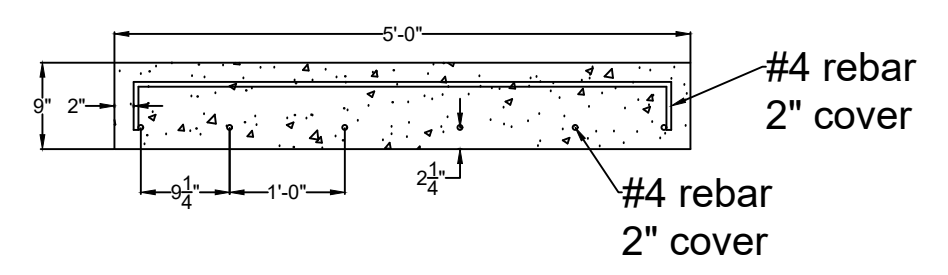
**Clinton Sawmill Amphitheater**

2231 Grant Street  
Clinton, IA 52732

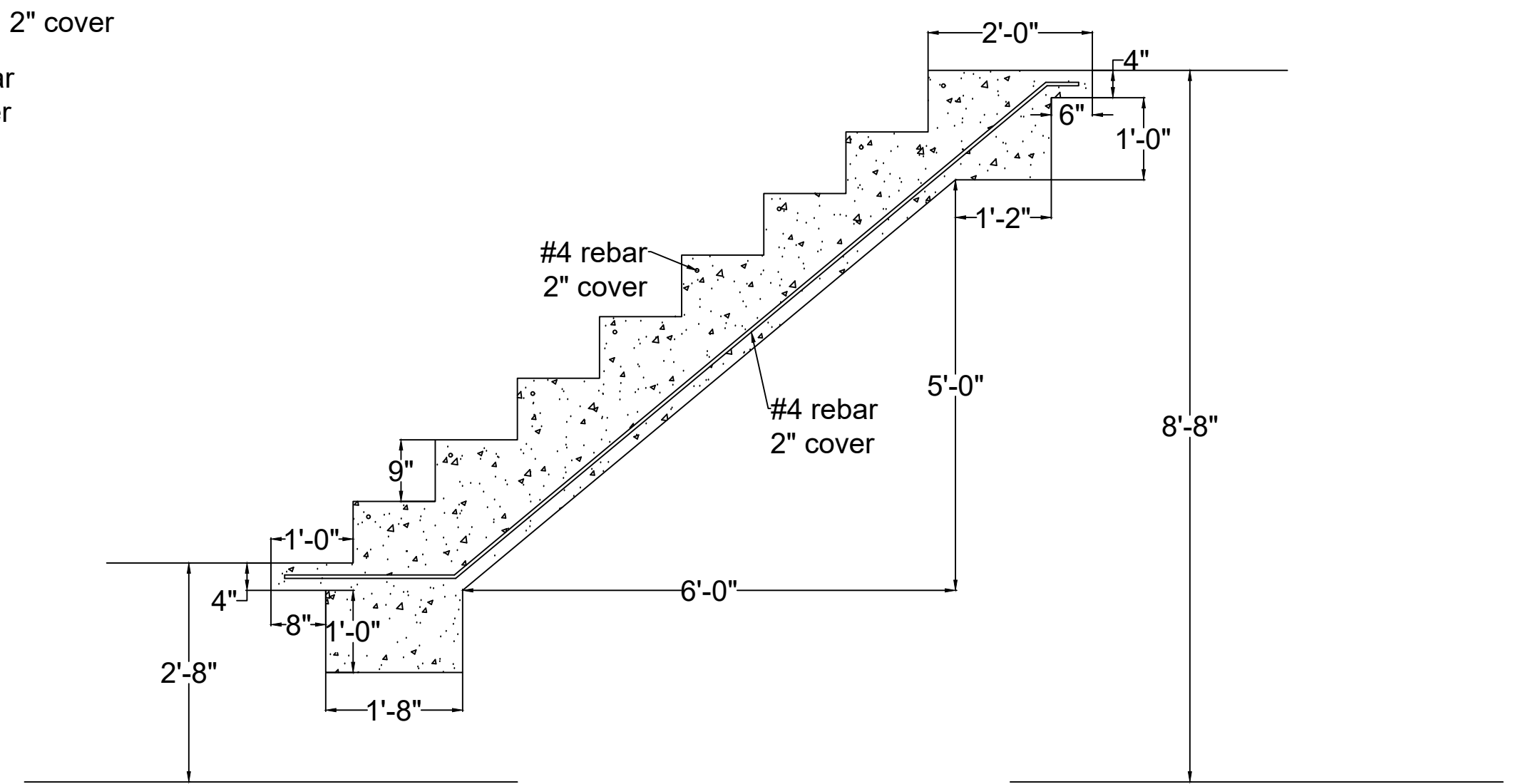
SHEET NAME  
Stair Detailing

SHEET NO.  
**06**

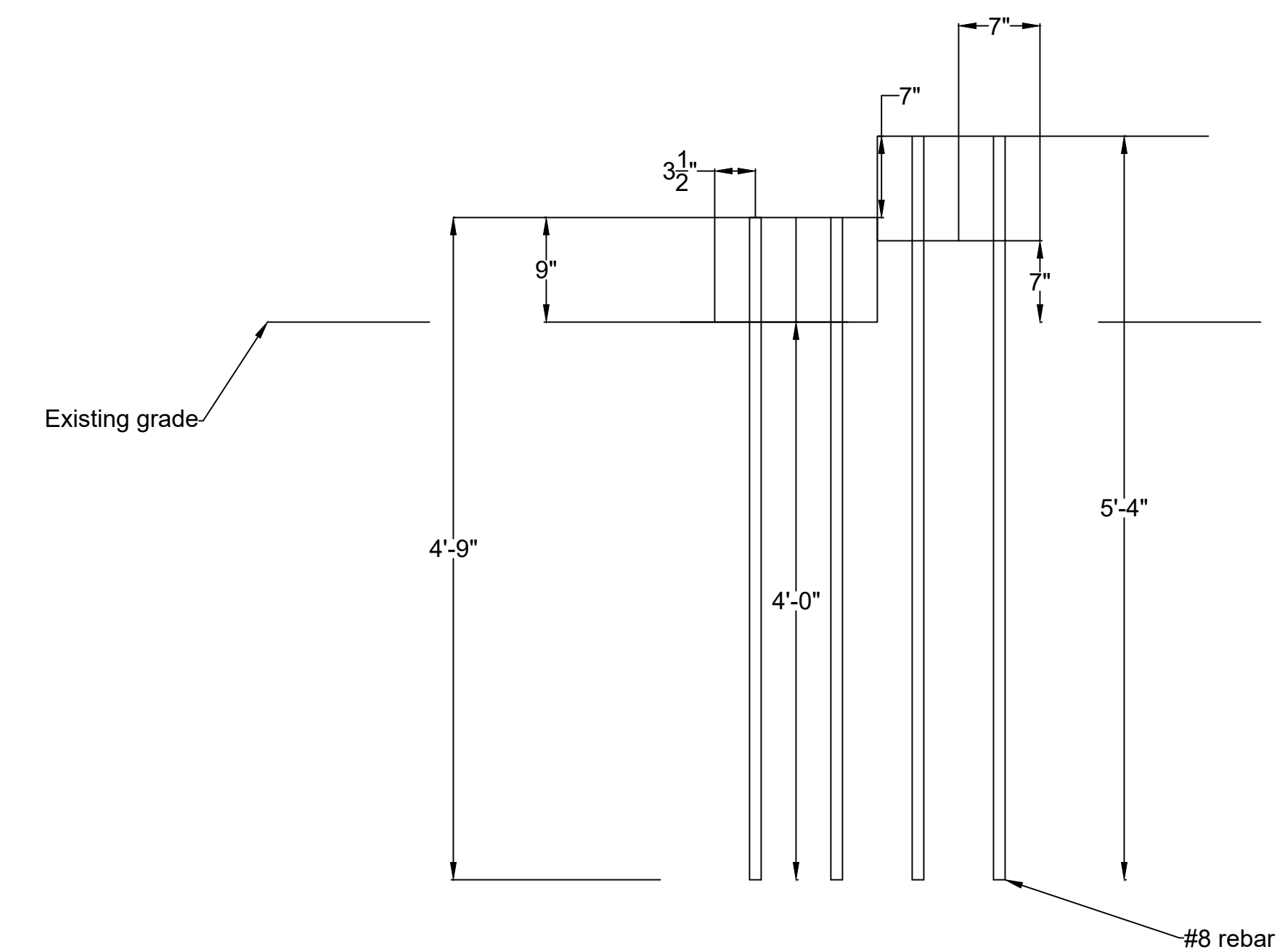
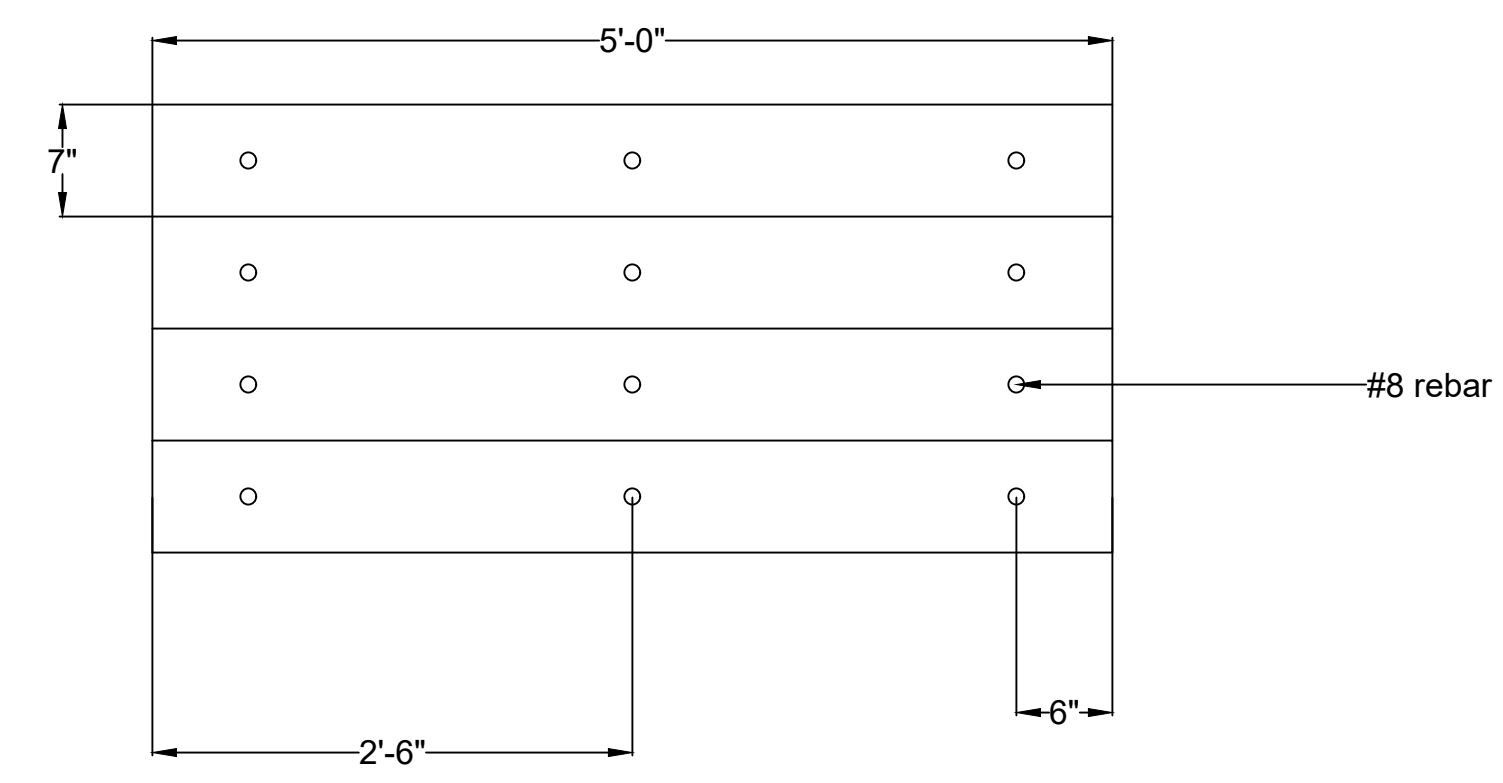
Riser Detail



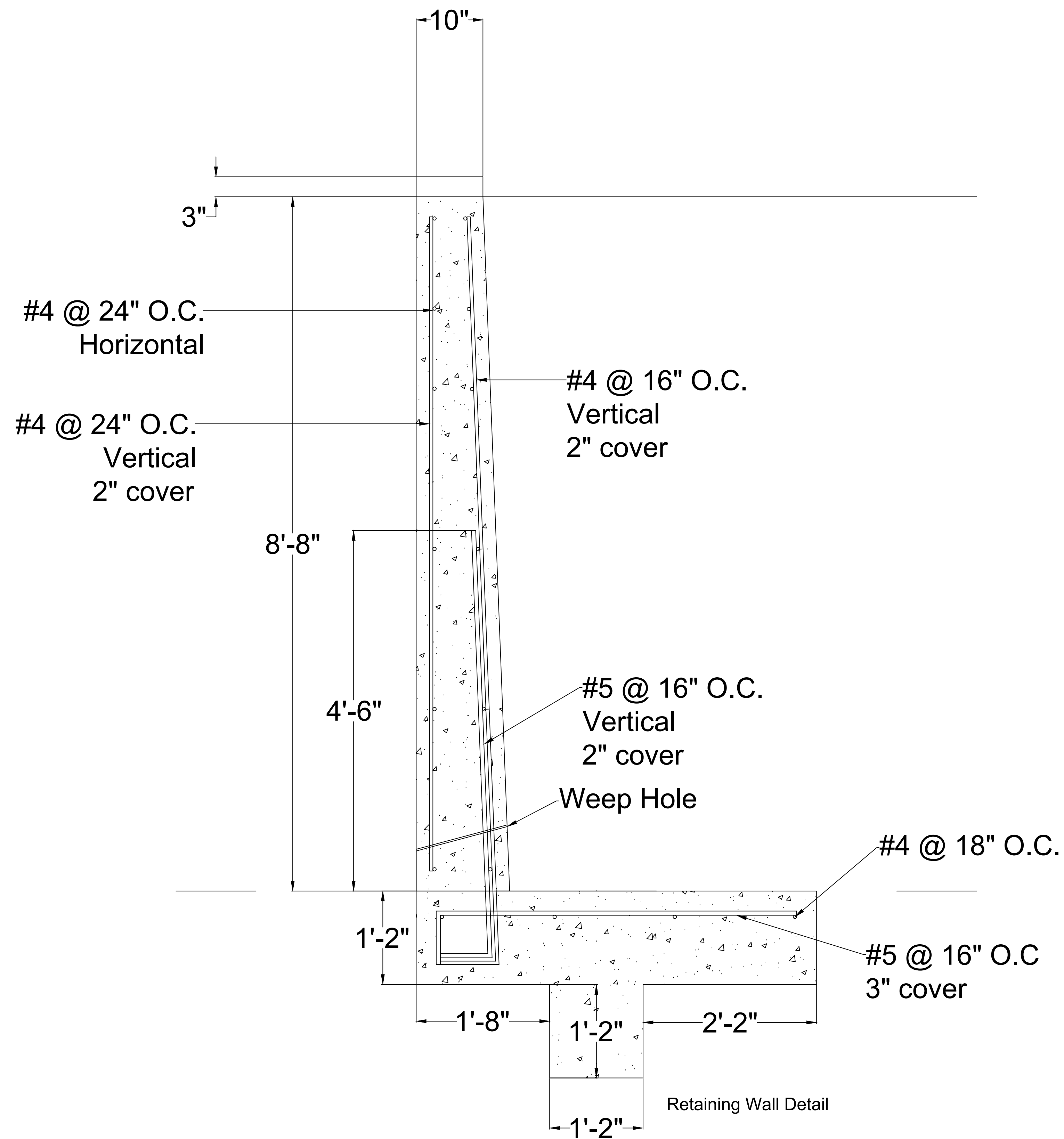
Railings installed @ 30" above toe of stair



Tier 3 Stair Detail



Tier 1 and 2 Stair Detail



The third tier will be backfilled with Class A stone, with 1' of topsoil as the top layer.

Weep Hole:  
 $\frac{1}{4}$ " PVC pipe @ 15 degree angle  
 Spaced 24" O.C. on outer wall only

PROJECT:	CEE: 4850
DATE :	4/9/21
DRAWN BY:	M&M Engineering
REVISION:	

**THE UNIVERSITY OF IOWA**  
**CIVIL AND ENVIRONMENTAL ENGINEERING**  
 4105 SEAMANS CENTER FOR THE  
 ENGINEERING ARTS AND SCIENCES  
 103 S CAPITOL ST  
 IOWA CITY, IOWA 52242  
 PHONE: 319.335.5647  
 FAX: 319.335.5660  
 EMAIL: civil-hawks@iowa.edu



EDUCATIONAL - NOT  
 CONSTRUCTION

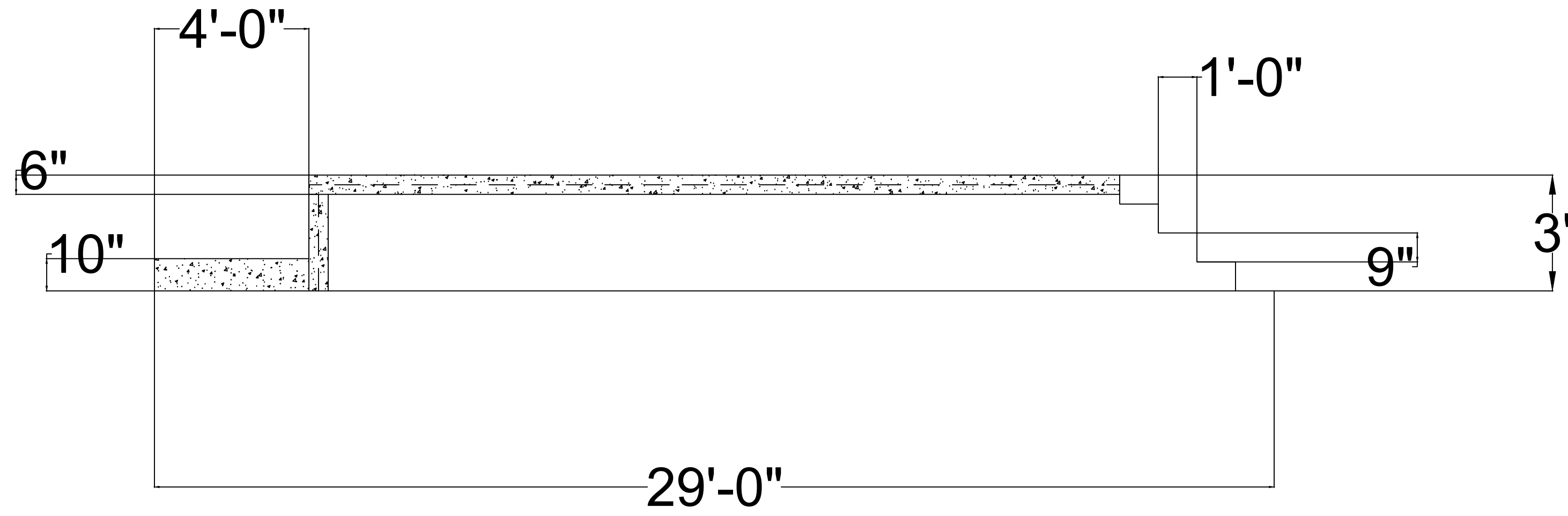
**Clinton Sawmill Amphitheater**  
 2231 Grant Street  
 Clinton, IA 52732

SHEET NAME  
 Retaining Wall

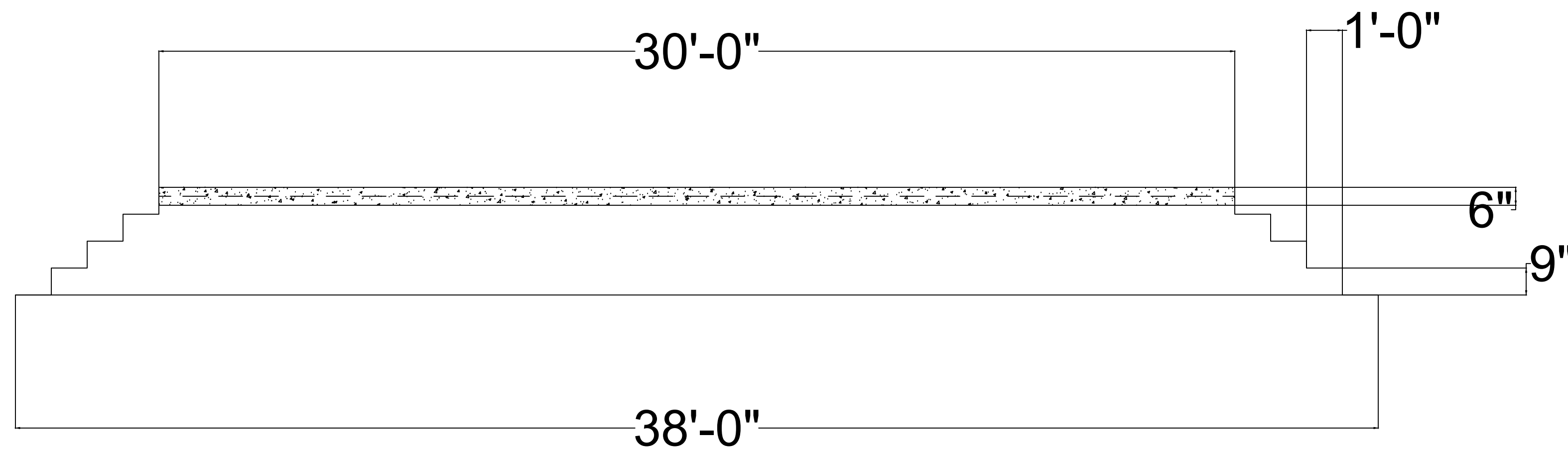
SHEET NO.  
**07**

Note:

- Center of stage will be backfilled with Grade A gravel to form a semi-hollow structure
- Stairs around stage also rebar reinforced concrete
- Stairs to be reduced to 7" height. Increase in number of steps to accommodate.
- Previous note applies to seating stairs as well



Stage cross section E-W



Stage cross section N-S

PROJECT:	CEE: 4850
DATE :	4/9/21
DRAWN BY:	M&M Engineering
REVISION:	

**THE UNIVERSITY OF IOWA**  
**CIVIL AND ENVIRONMENTAL ENGINEERING**  
 4105 SEAMANS CENTER FOR THE  
 ENGINEERING ARTS AND SCIENCES  
 103 S CAPITOL ST  
 IOWA CITY, IOWA 52242  
 PHONE: 319.335.5647  
 FAX: 319.335.5660  
 EMAIL: [civil-hawks@iowa.edu](mailto:civil-hawks@iowa.edu)



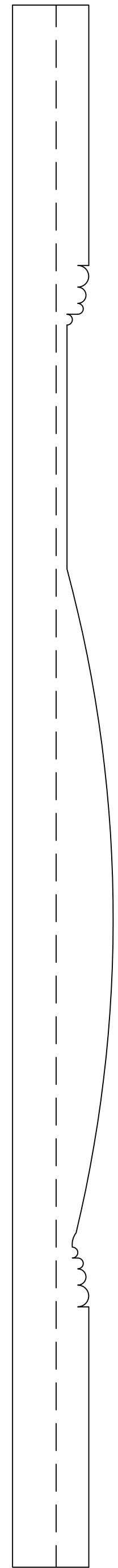
**Clinton Sawmill Amphitheater**  
 2231 Grant Street  
 Clinton, IA 52732

SHEET NAME  
 Stage Cross Section

SHEET NO.  
**08**

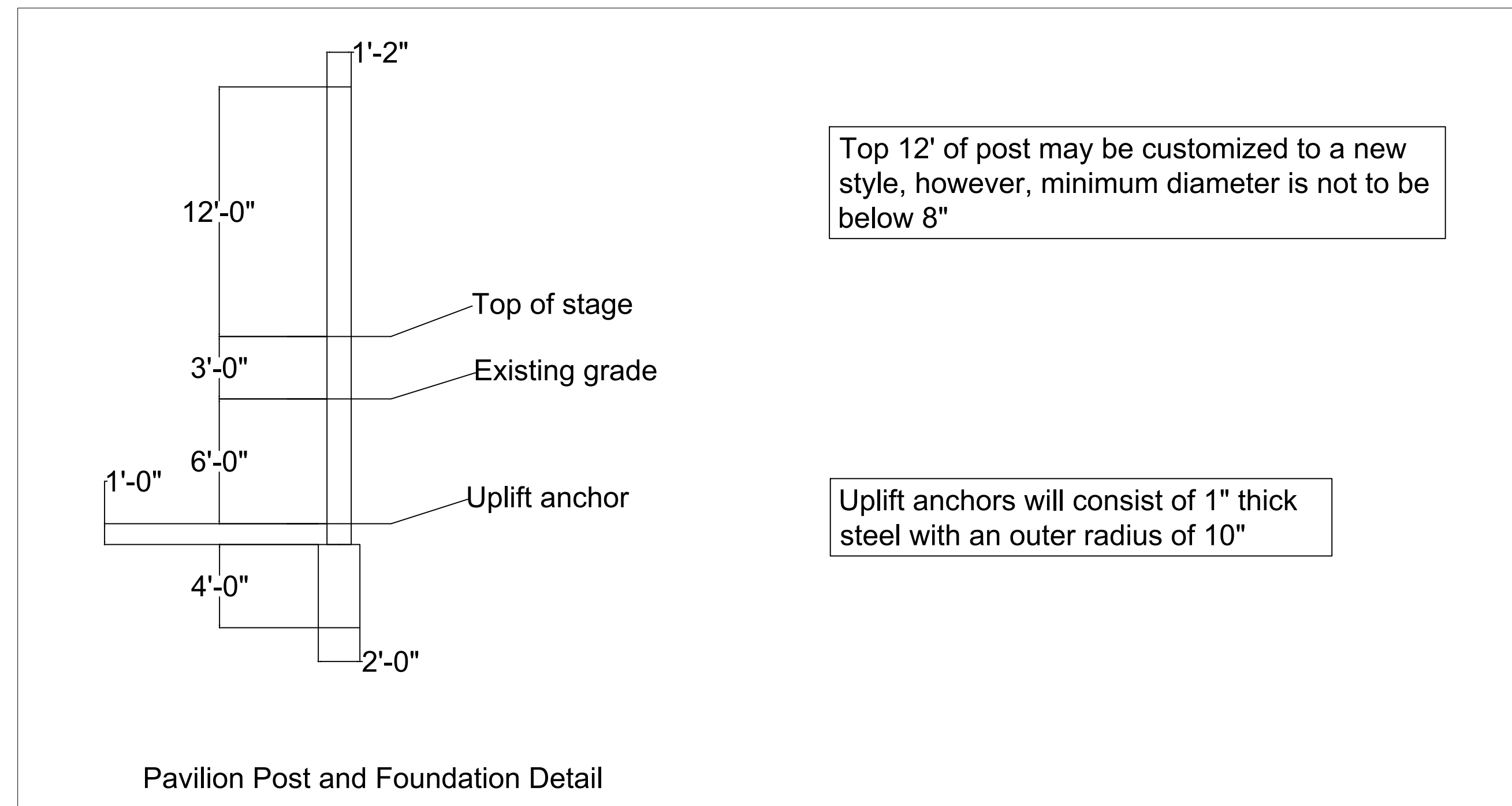
PROVISIONAL - NOT FOR CONSTRUCTION



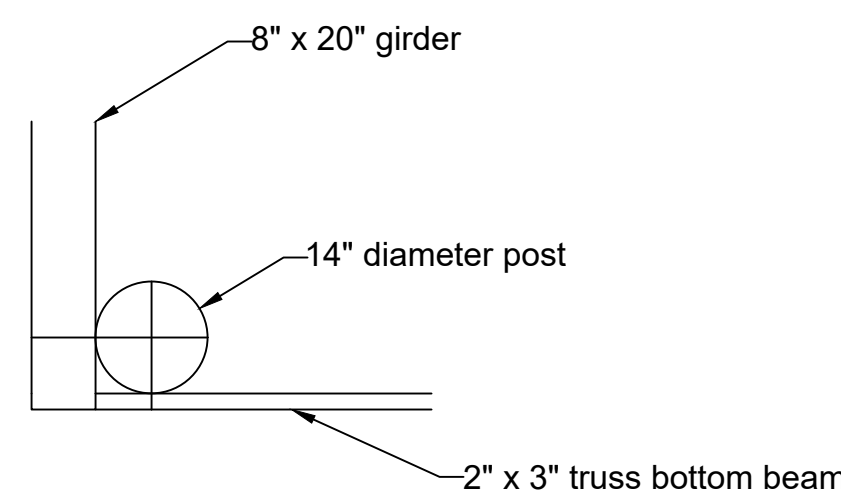


Sample Column Profile

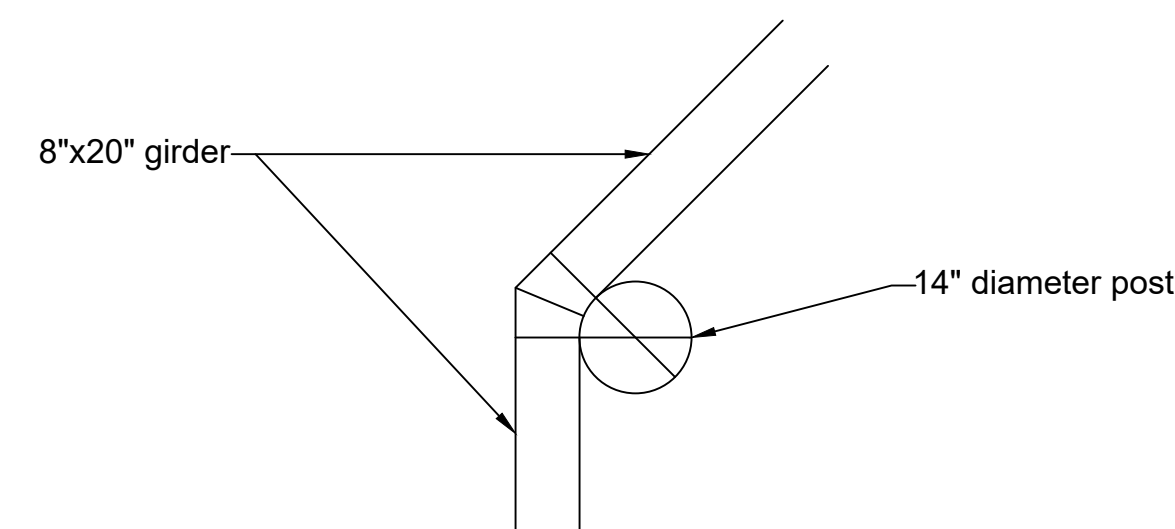
Minimum column diameter at any point is 8"



Through bolts consisting of #8 rebar will secure connection between roof elements and posts. Bolts will be placed through center of roof element being attached.



West End Connection



Eastern Connections

For angled connection, roof elements will be connected to post with #8 rebar as a through bolt. The bolts will be located 5" from the top of one beam, and 5" from the bottom of the other

PROJECT:	CEE: 4850
DATE :	4/9/21
DRAWN BY:	M&M Engineering
REVISION:	

**THE UNIVERSITY OF IOWA**  
**CIVIL AND ENVIRONMENTAL ENGINEERING**  
 4105 SEAMANS CENTER FOR THE  
 ENGINEERING ARTS AND SCIENCES  
 103 S CAPITOL ST  
 IOWA CITY, IOWA 52242  
 PHONE: 319.335.5647  
 FAX: 319.335.5660  
 EMAIL: civil-hawks@iowa.edu



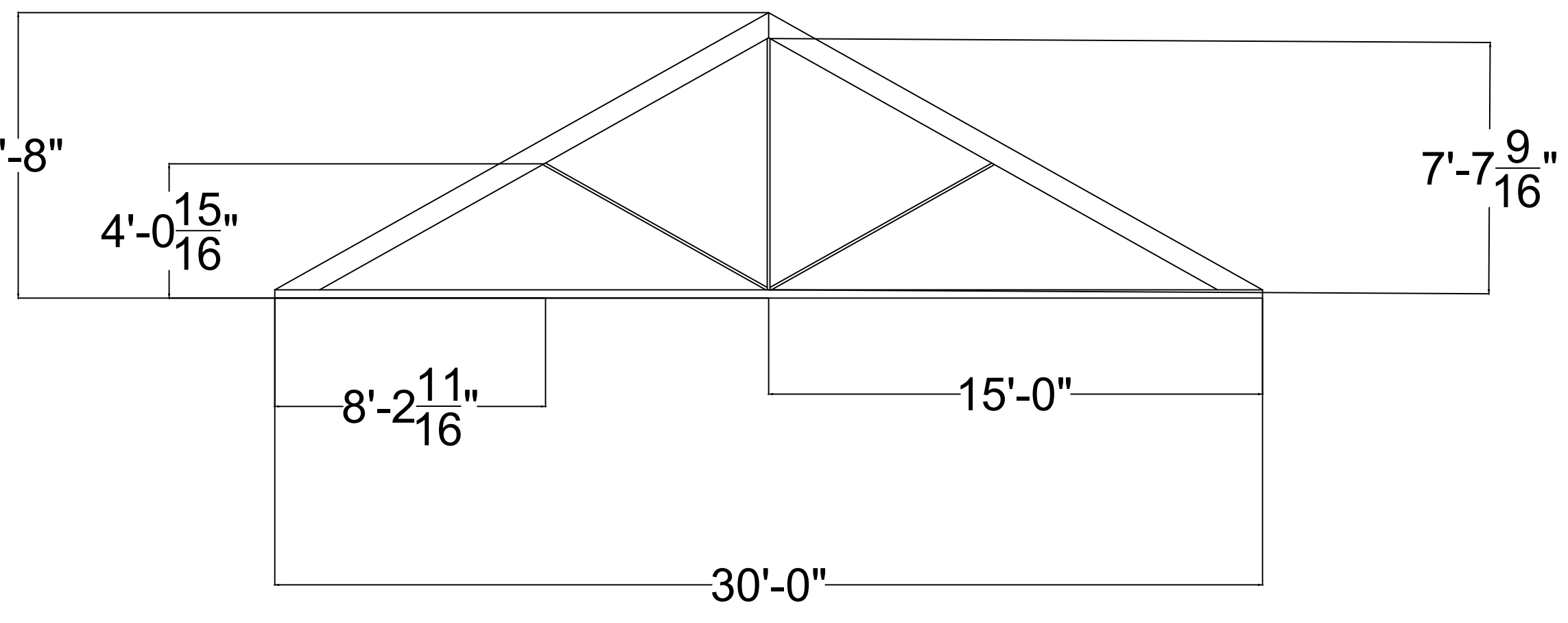
EDUCATIONAL - NOT  
 CONSTRUCTION

**Clinton Sawmill Amphitheater**

2231 Grant Street  
 Clinton, IA 52732

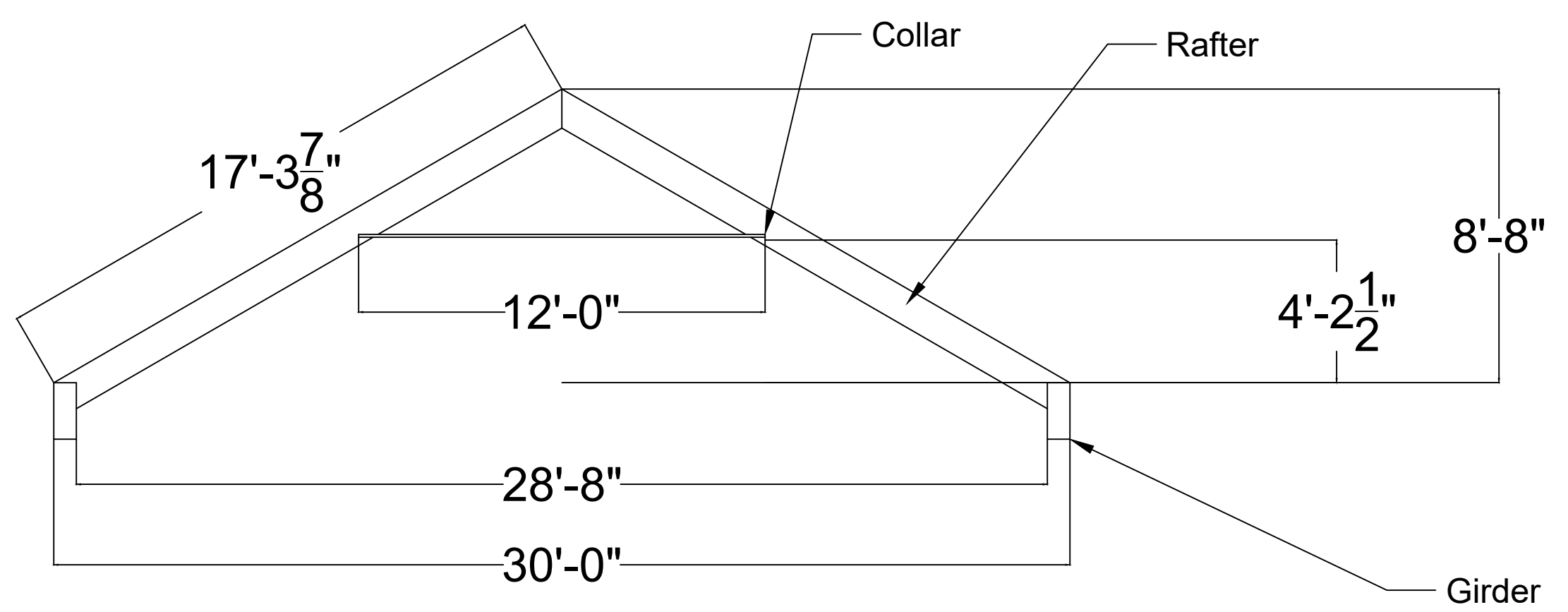
SHEET NAME  
 Pavillion  
 Column Detail

SHEET NO.  
**09**



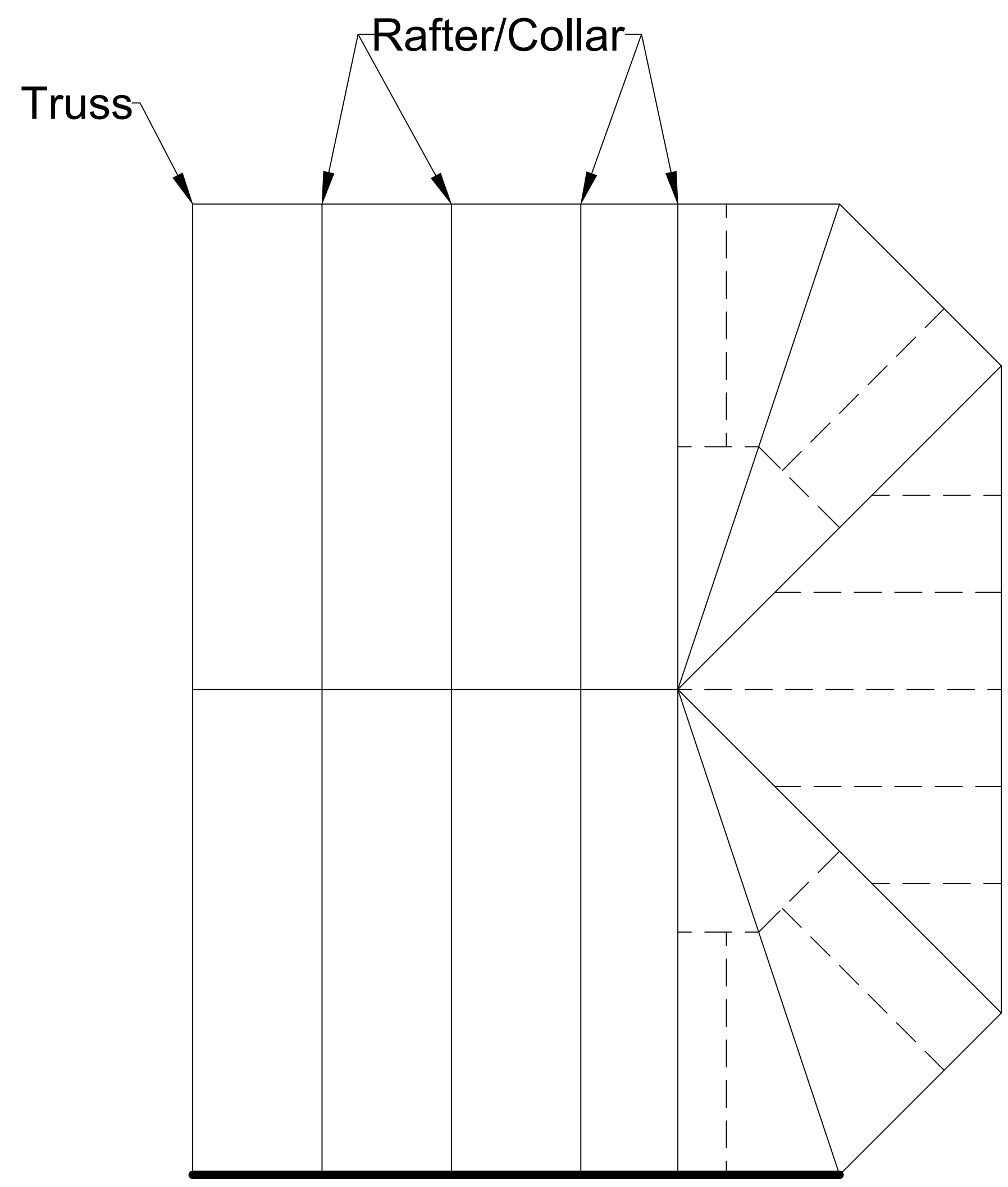
Pavilion Truss

Member Dimensions:  
 Top Chord: 2"x8"  
 Bottom: 2"x3"  
 Diagonals: 1"x3"

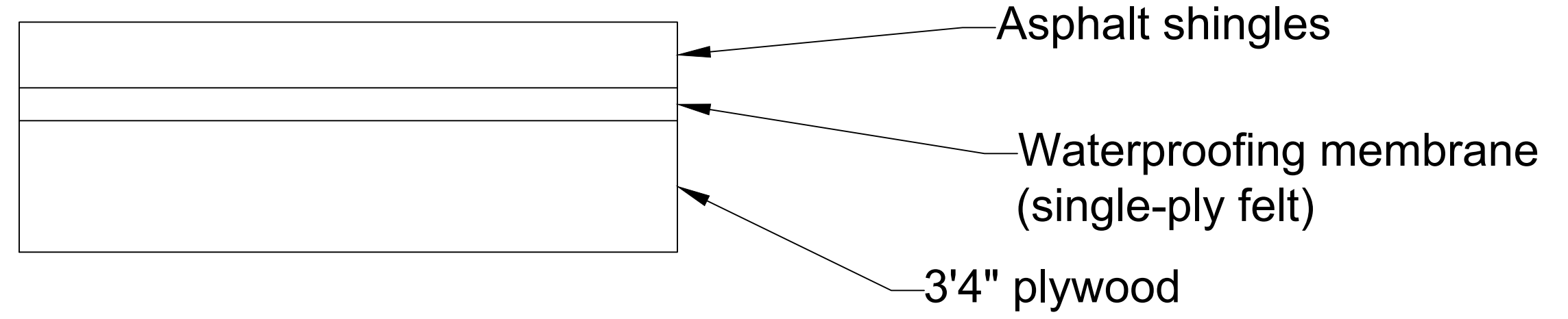


Pavilion Rafter/Collar

Member Dimensions:  
 Girder: 8"x20"  
 Rafter: 12"x12"  
 Collar: 3"x1"



Pavilion Framing Layout



Roof Sheathing Profile