

An aerial rendering of a residential development. The scene shows several white, single-story houses with gabled roofs and porches, arranged in a cluster. The houses are set on green lawns with scattered trees. A paved path winds through the area, and a few small figures of people are visible for scale. The overall atmosphere is bright and clean, with soft shadows cast by the buildings and trees.

Clinton Infill

City of Clinton, Iowa

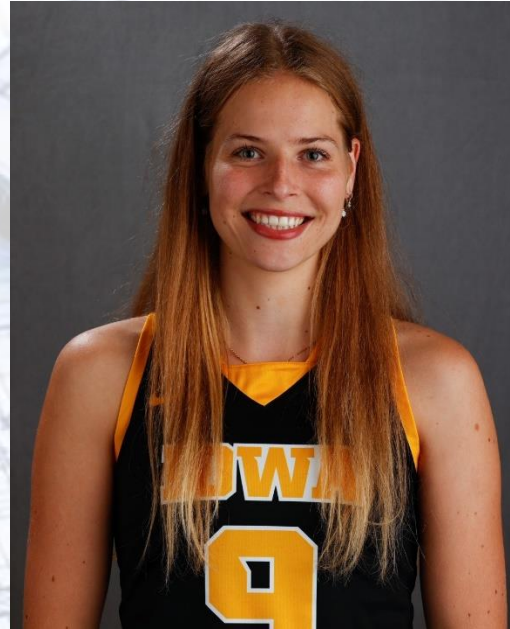
Sofie – Jacob – Josemaria - Ryan

Meet Our Team



Ryan Carlson

Project Manager



Sofie Stribos

Structural Engineer



Jacob Tobey

Structural Engineer



Josemaria Espinoza

Structural Engineer

An aerial photograph of a suburban neighborhood, showing a grid of streets, numerous houses with varying roof colors, and many trees with green and some autumn-colored foliage. The image is slightly faded to allow text to be overlaid.

Road Map

Project Goals

Final Design Elements

Cost Estimates & Recap



Project Goals

Infill: Residential Housing Options



Adequate & Affordable



BEFORE



AFTER

Infill: Pocket Neighborhood



BEFORE

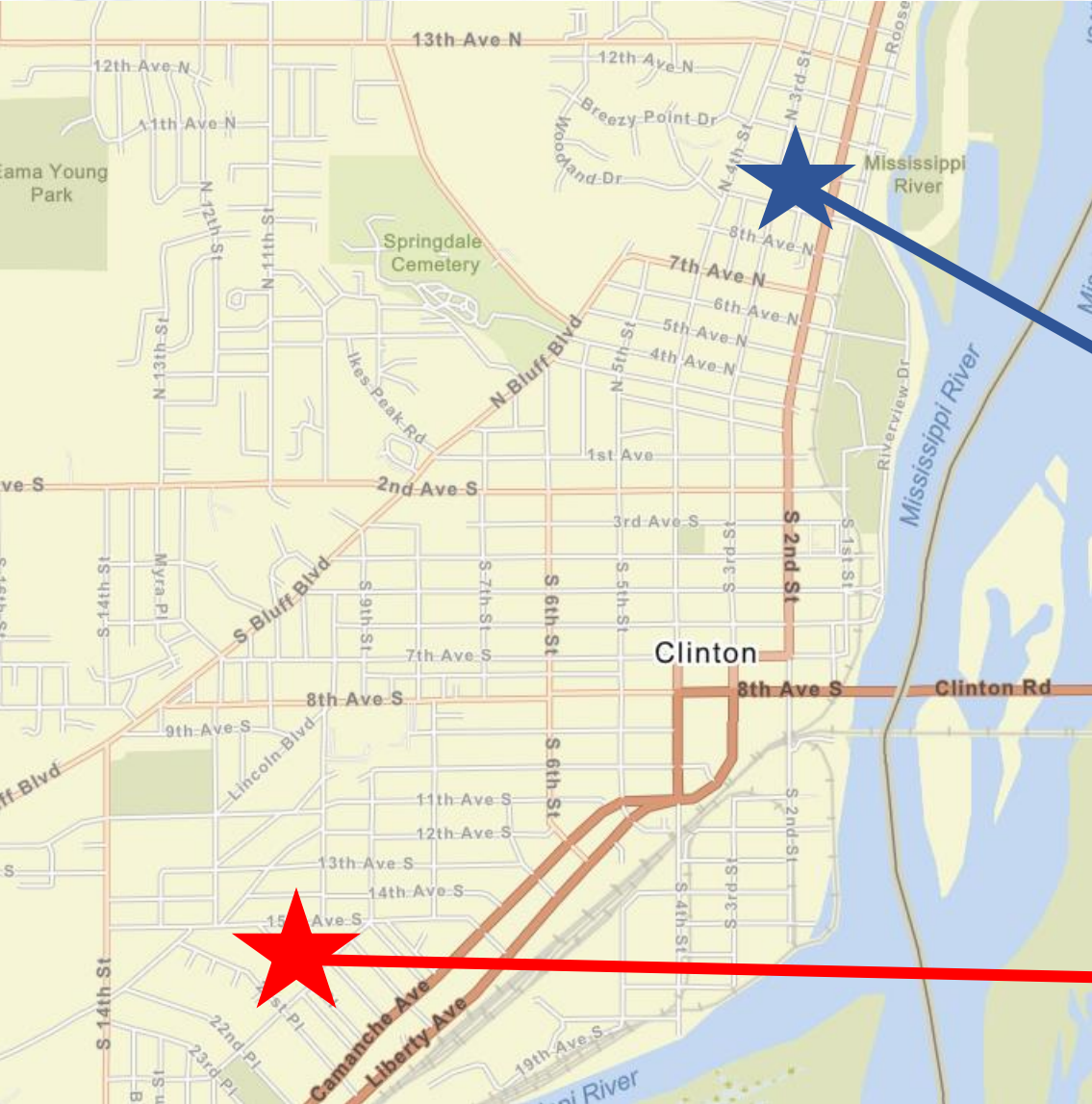


AFTER



Final Design Elements

Lot Selection



Hawthorne Park



Longfellow Heights Neighborhood

Pocket Neighborhood



Architectural Design: 1-Story House

840 SF

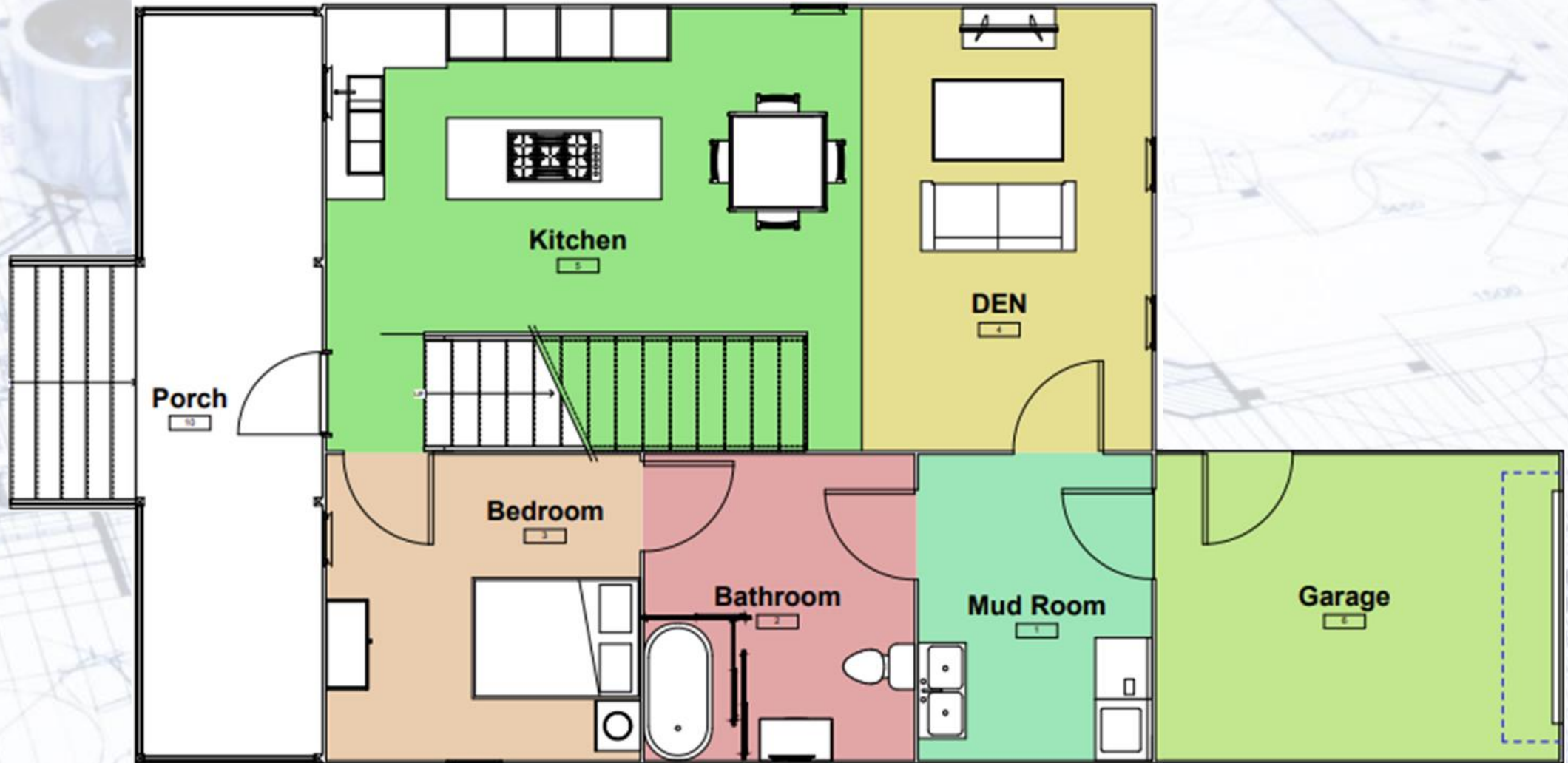


Front View



Back View

Architectural Design: 1st Floor



Architectural Design: 2-Story House

1300 SF

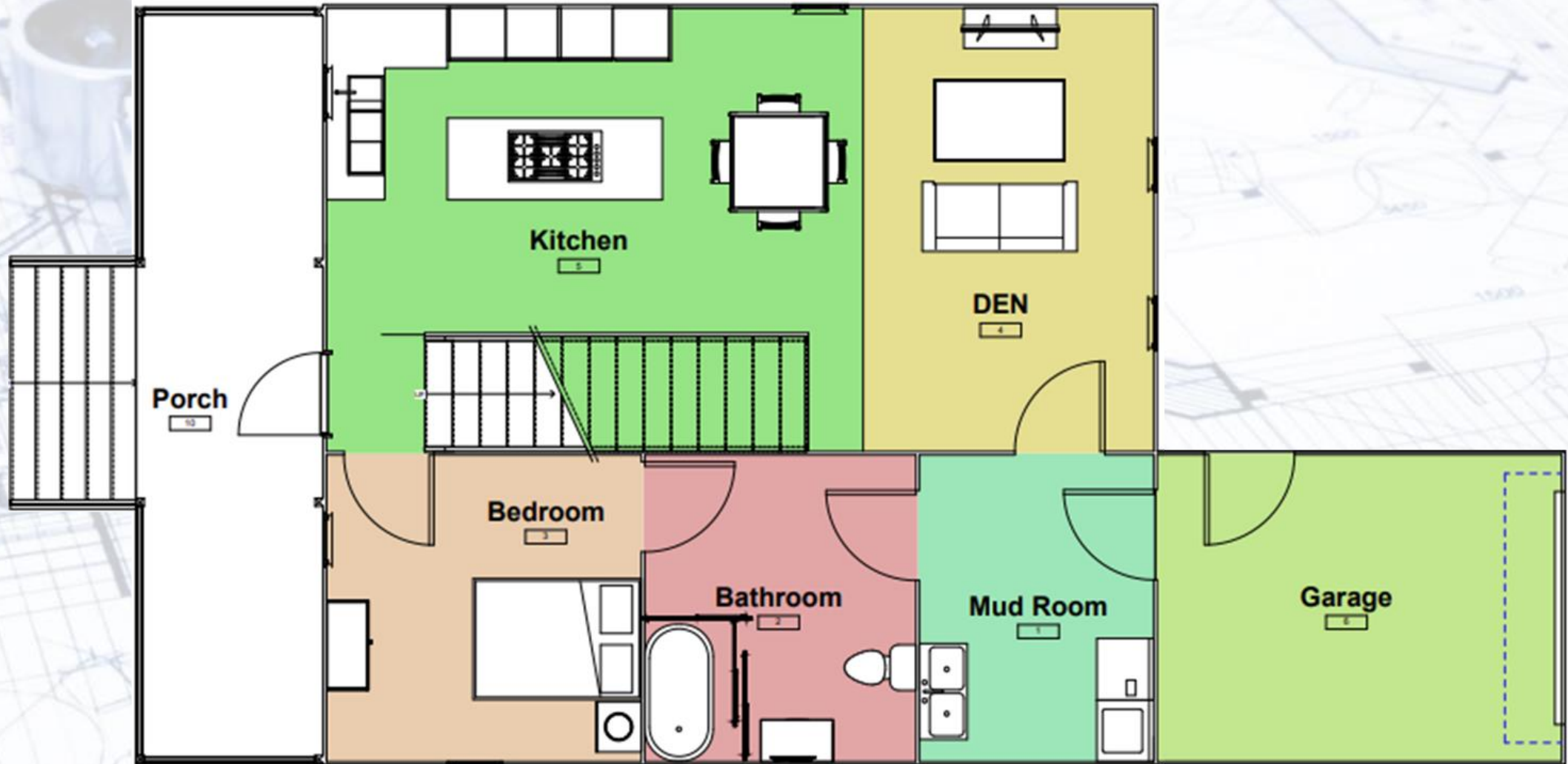


Front View

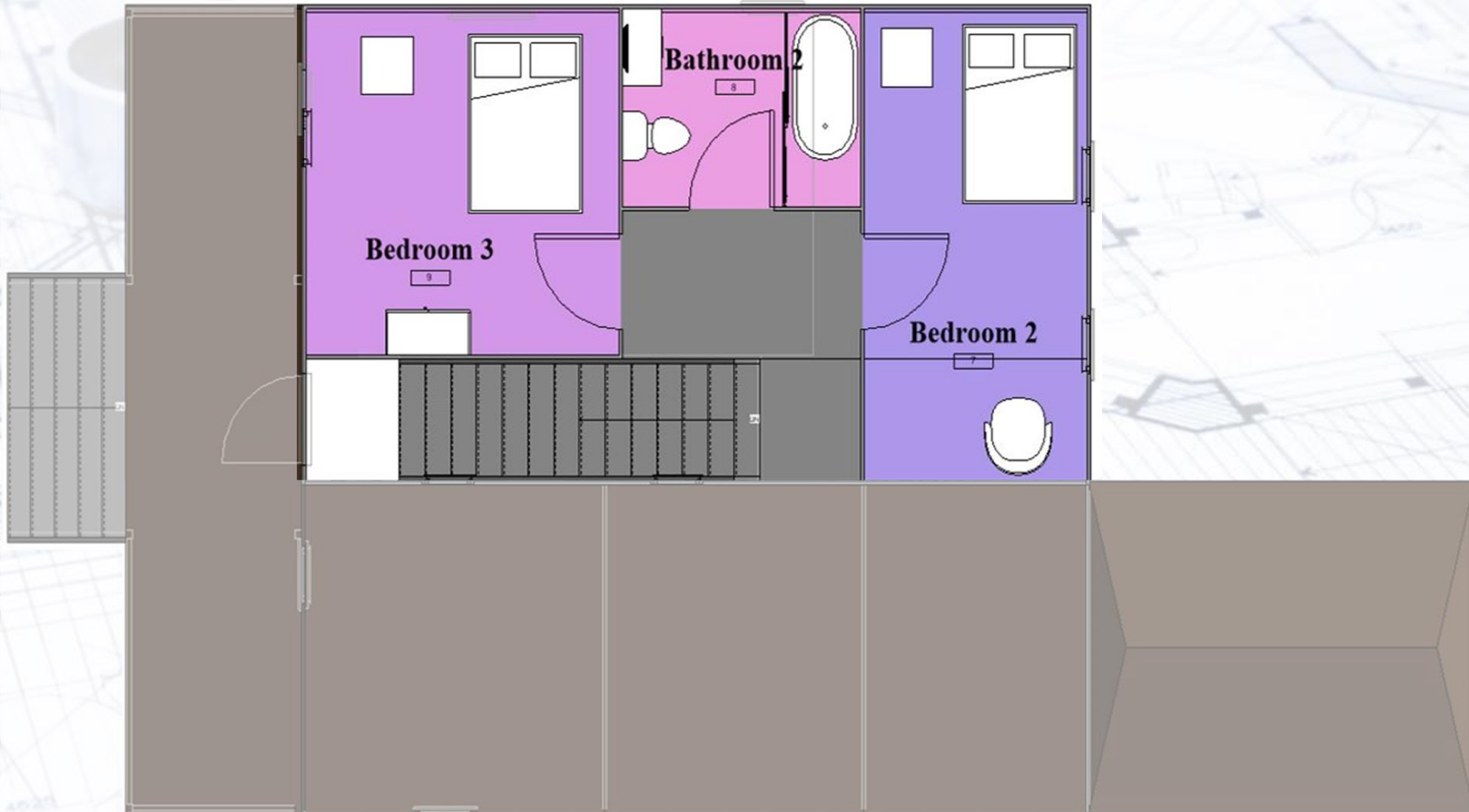


Back View

Architectural Design: 1st Floor



Architectural Design: 2nd Floor



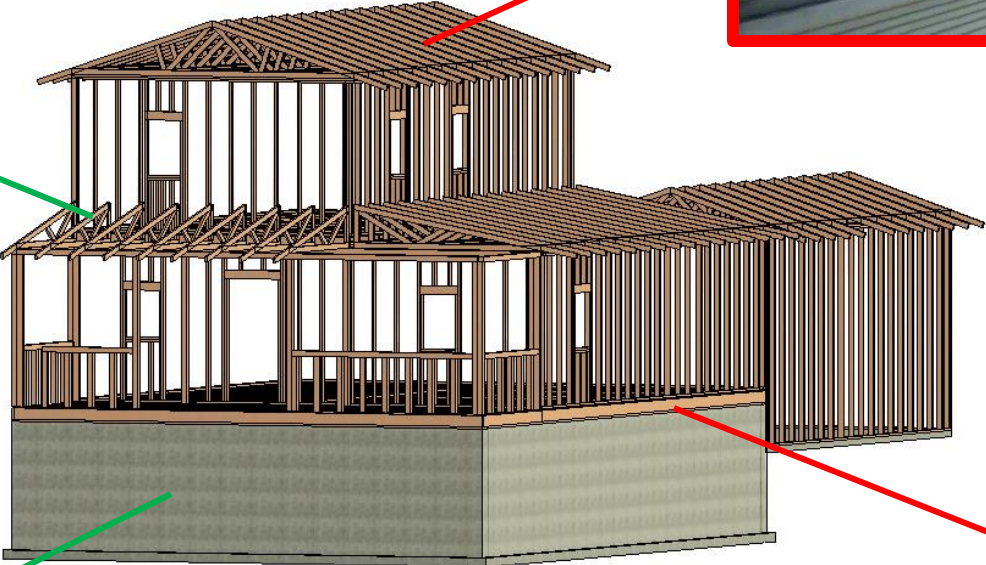
Cost-Effective Alternatives



Recycled and Composite Materials



3D Printing



Tiny Homes



Prefabricated Home

An aerial perspective rendering of a residential development. The scene features several white, single-story houses with gabled roofs, arranged in a cluster. The houses are surrounded by lush green lawns and numerous mature trees. A network of paved walkways and a curved driveway are visible. In the background, a large, flat, light-colored area, possibly a parking lot or a field, is visible. The overall atmosphere is bright and clear, suggesting a sunny day. The text 'Cost Estimates & Recap' is overlaid in the center of the image in a large, black, sans-serif font.

Cost Estimates & Recap

1-Story Cost Estimates

Low Cost 1-Story Housing Option (840 SF)	Cost (USD)
Base	\$122,117
Modifications: Open Porch	\$9,320
Site Work	\$9,633
Contingency + Admin Cost	20%
Total Estimated Cost	\$169,500

High Cost 1-Story Housing Option (840 SF)	Cost (USD)
Base	\$122,117
Modifications: Open Porch + Basement + Garage	\$38,701
Site Work	\$11,102
Contingency + Admin Cost	20%
Total Estimated Cost	\$206,500

2-Story Cost Estimates

Low Cost 2-Story Housing Option (1300 SF)	Cost (USD)
Base	\$170,664
Modifications: Open Porch	\$9,320
Site Work	\$10,440
Contingency + Admin Cost	20%
Total Estimated Cost	\$228,500

High Cost 2-Story Housing Option (1300 SF)	Cost (USD)
Base	\$170,664
Modifications: Open Porch + Basement + Garage	\$36,833
Site Work	\$11,568
Contingency + Admin Cost	20%
Total Estimated Cost	\$263,000

Pocket Neighborhood Estimates

Low Cost Pocket Neighborhood Project	Cost (USD)
Housing (10 One-Story Houses Without Garage or Basement)	\$1,695,000
Path (5440 SF)	\$23,555
Patio (2 x 975 SF)	\$8,444
Landscaping	\$25,000
Total Estimated Cost	\$1,752,000

High Cost Pocket Neighborhood Project	Cost (USD)
Housing (10 Two-Story Houses with Garage & Basement)	\$2,630,000
Path (5440 SF)	\$23,555
Patio (2 x 975 SF)	\$8,444
Landscaping	\$25,000
Total Estimated Cost	\$2,687,000

Additional Funding





Project Recap

Thank you!

