

Eagle Point Park Primitive Campground

Audrey Birk, Andrew Klinkrodt, Nicholas Hughes, and Valerie Pardo
 Civil and Environmental Engineering
 University of Iowa
 Designed for the City of Clinton, IA
 Spring 2023



Design Objectives

The City of Clinton's Eagle Point Park is a spacious attraction for the community. In order to better utilize the space and further the vision for the park, our client shaped our mission to implement a primitive campground. The goals of this campground were to bring another recreation into the park, as well as impact the community with a new activity that will bring together friends and family to enjoy the community's environment. The project scope included designing the campsite layout, utilities, front gate access, restroom and storm shelter, and other amenities to each individual camp site. With designing an area for people to appreciate from in and out of town, our mission included prioritizing the enjoyment and safety of those who will utilize the space.

Eagle Point Park Campground

The campground is located in the Northern part of Eagle Point Park where a frisbee disc golf course intersects. To accommodate this change, a few holes will be relocated. Around the site, there is a covered pavilion, an existing vault toilet along the access road, and a wonderful view of the Mississippi River.

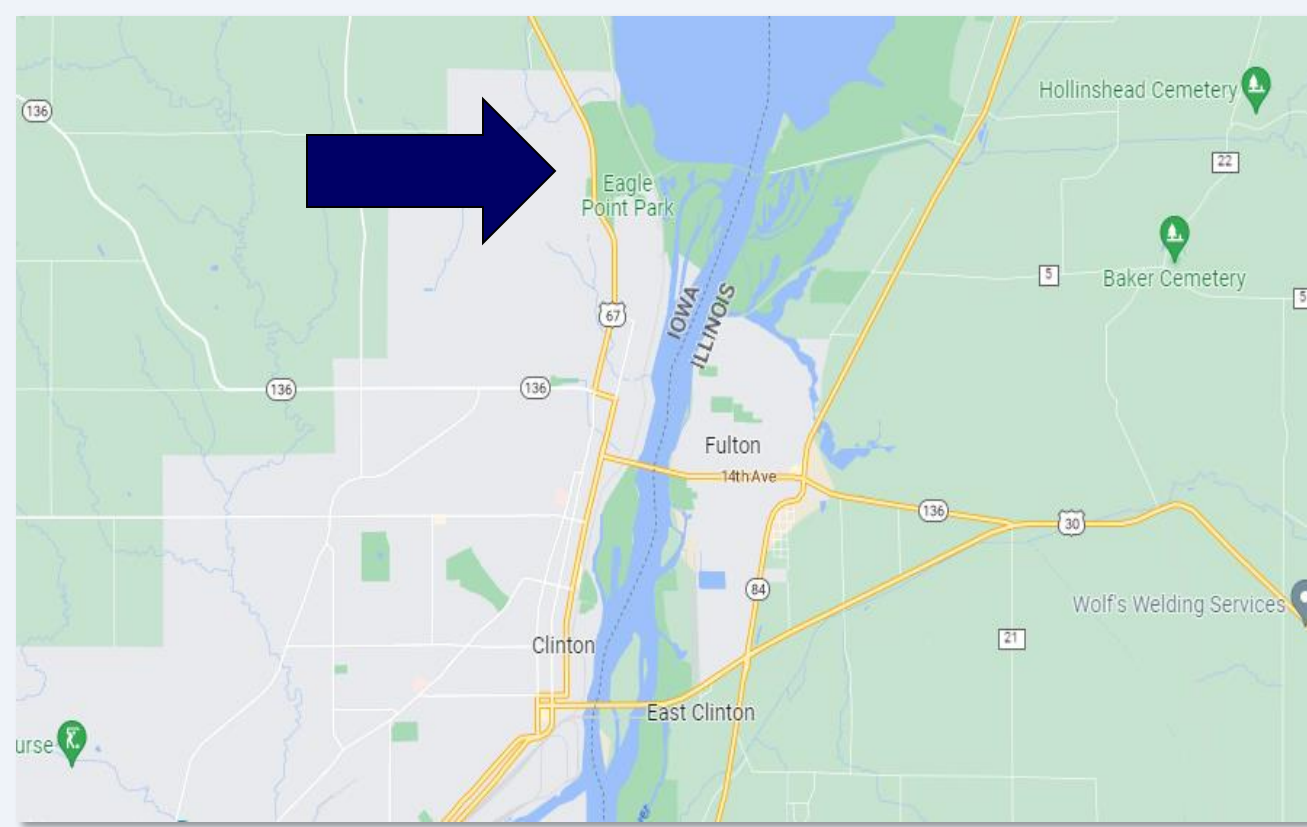


Figure 1. Park Location

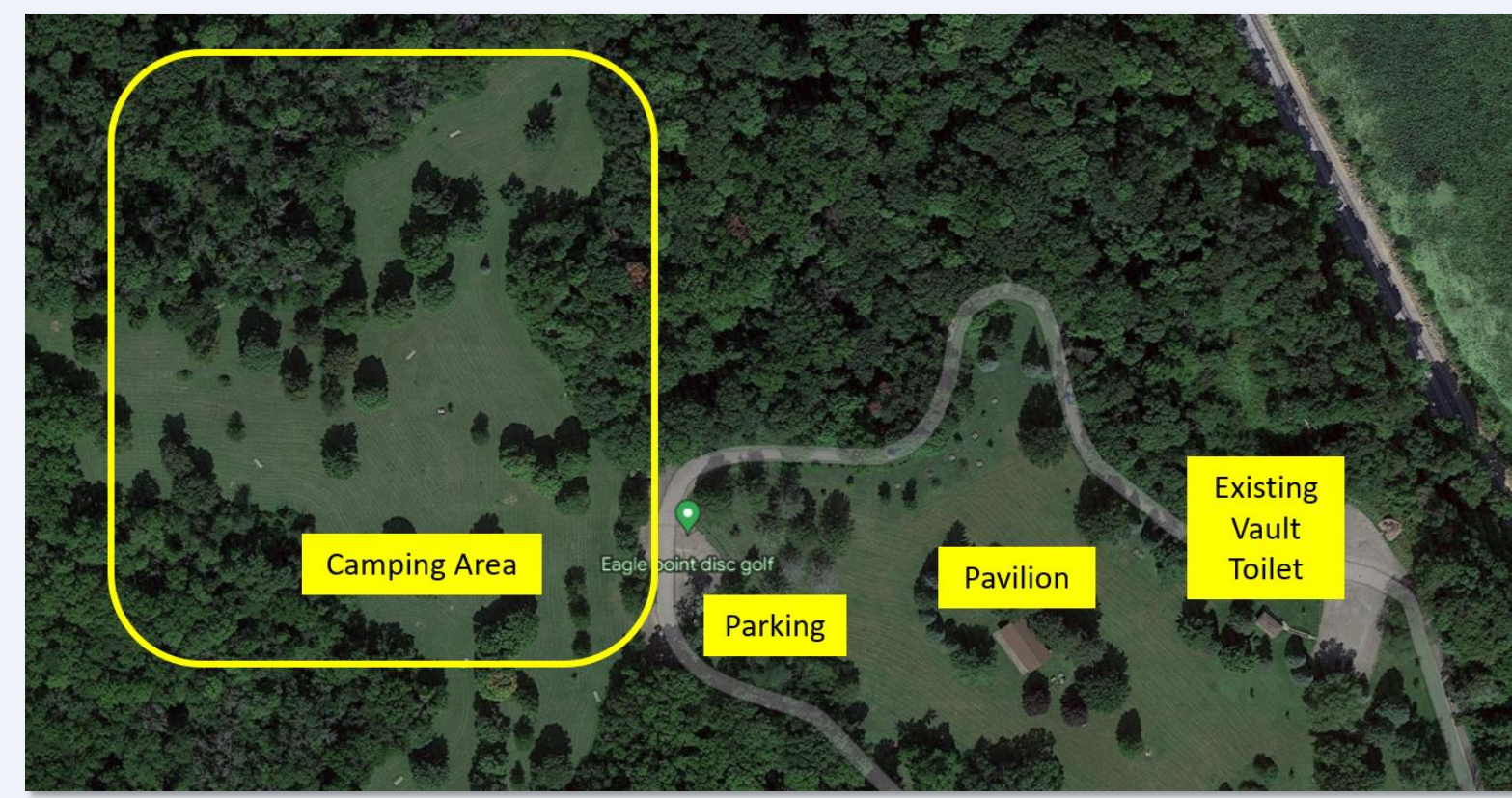


Figure 2. Campground Location

Electric and Water

Electricity will be taken from the Main Park Lodge and routed to the site for lighting on the restroom facility. Water lines will be routed from the pavilion East of the site to a new water spigot located South of the restroom. Appropriate gravel will be used to create a drainage basin under the water spigot to prevent erosion and collect runoff.

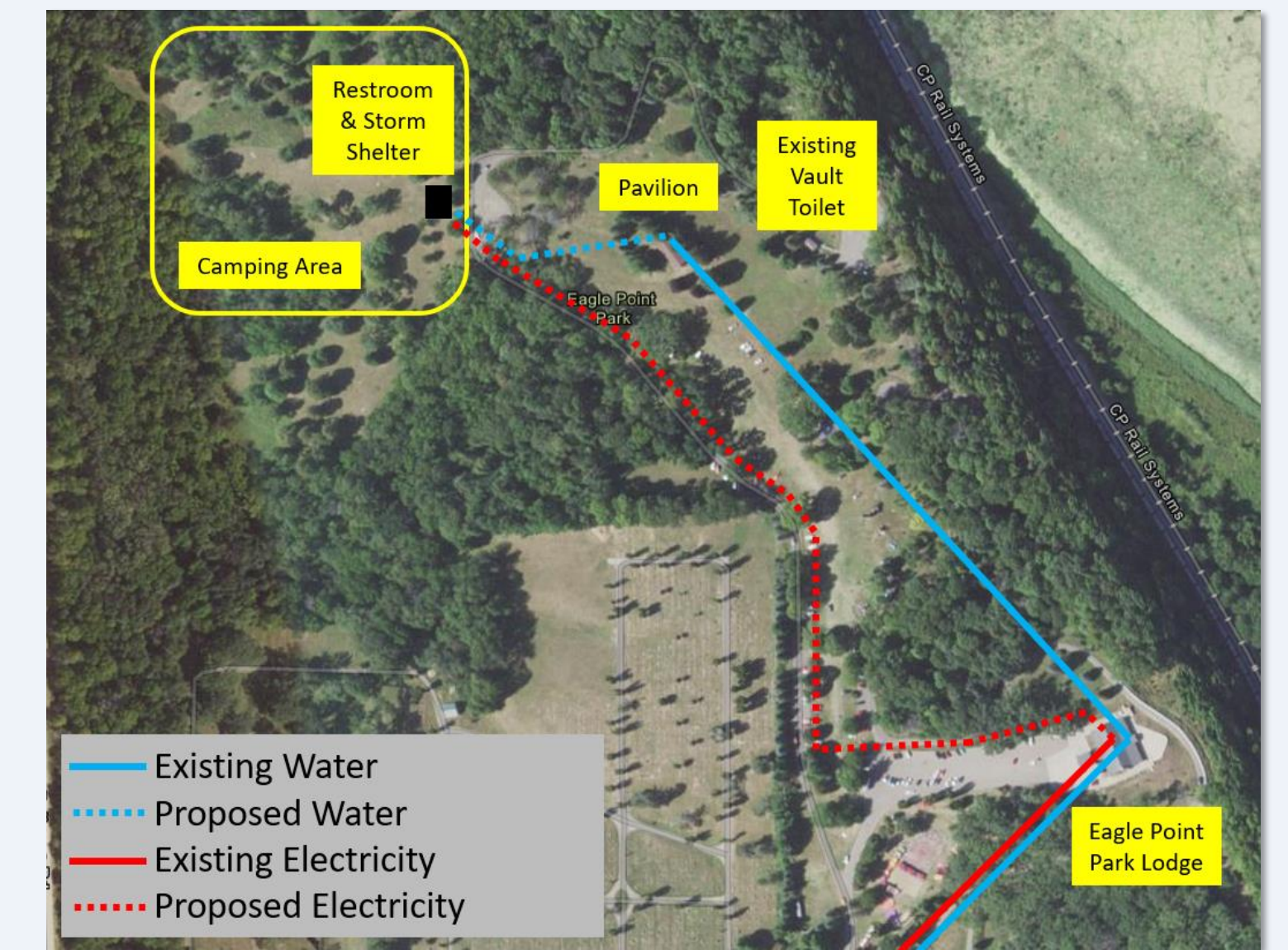


Figure 5. Utilities Map

Restroom and Storm Shelter

The restroom is a vault style toilet design that is ADA compliant. Vault toilets are common options for campgrounds and places with no sewage access. The restroom facility is combined with a storm shelter that is FEMA P-361 approved. Having a storm shelter on site greatly improves the campers' safety in the event of a storm.

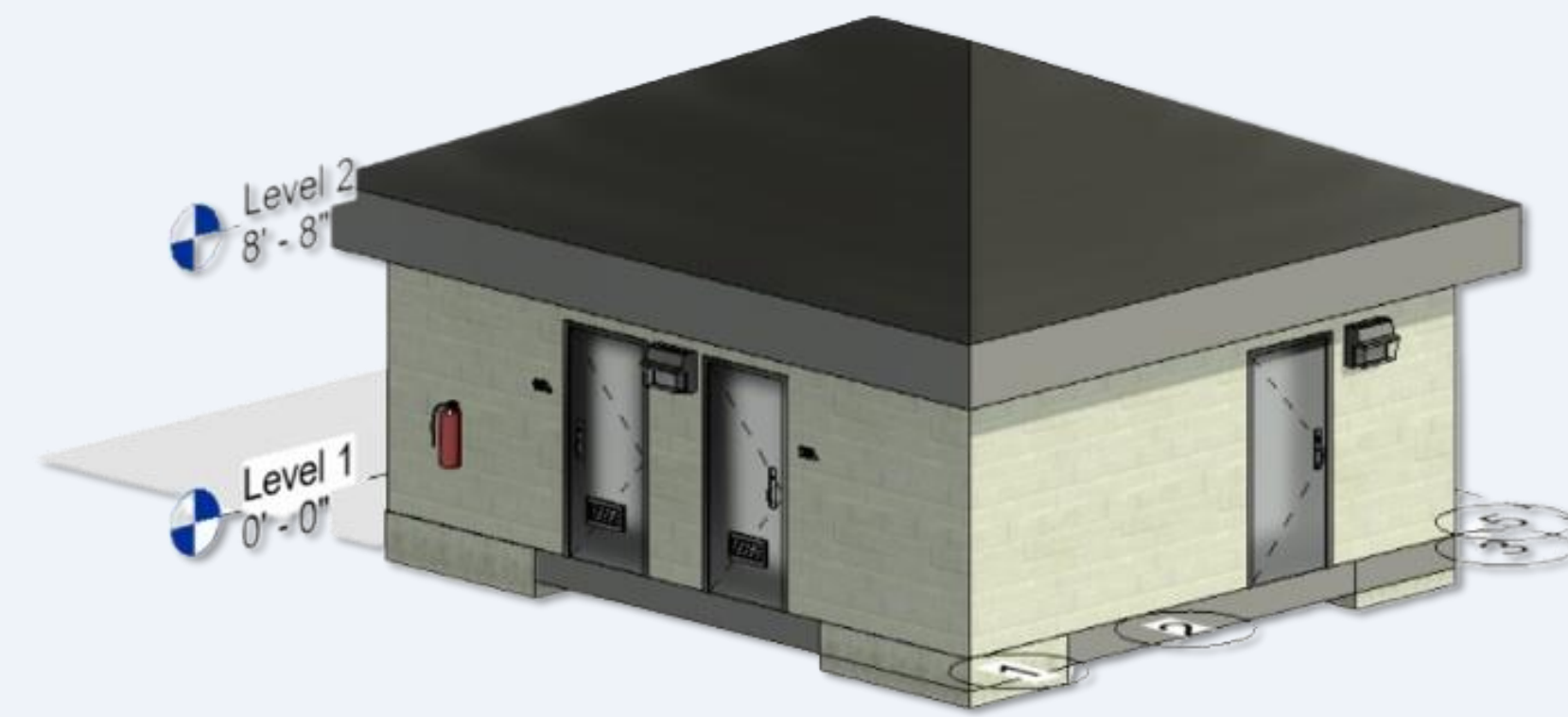


Figure 6. Side View of Vault Restrooms and Storm Shelter

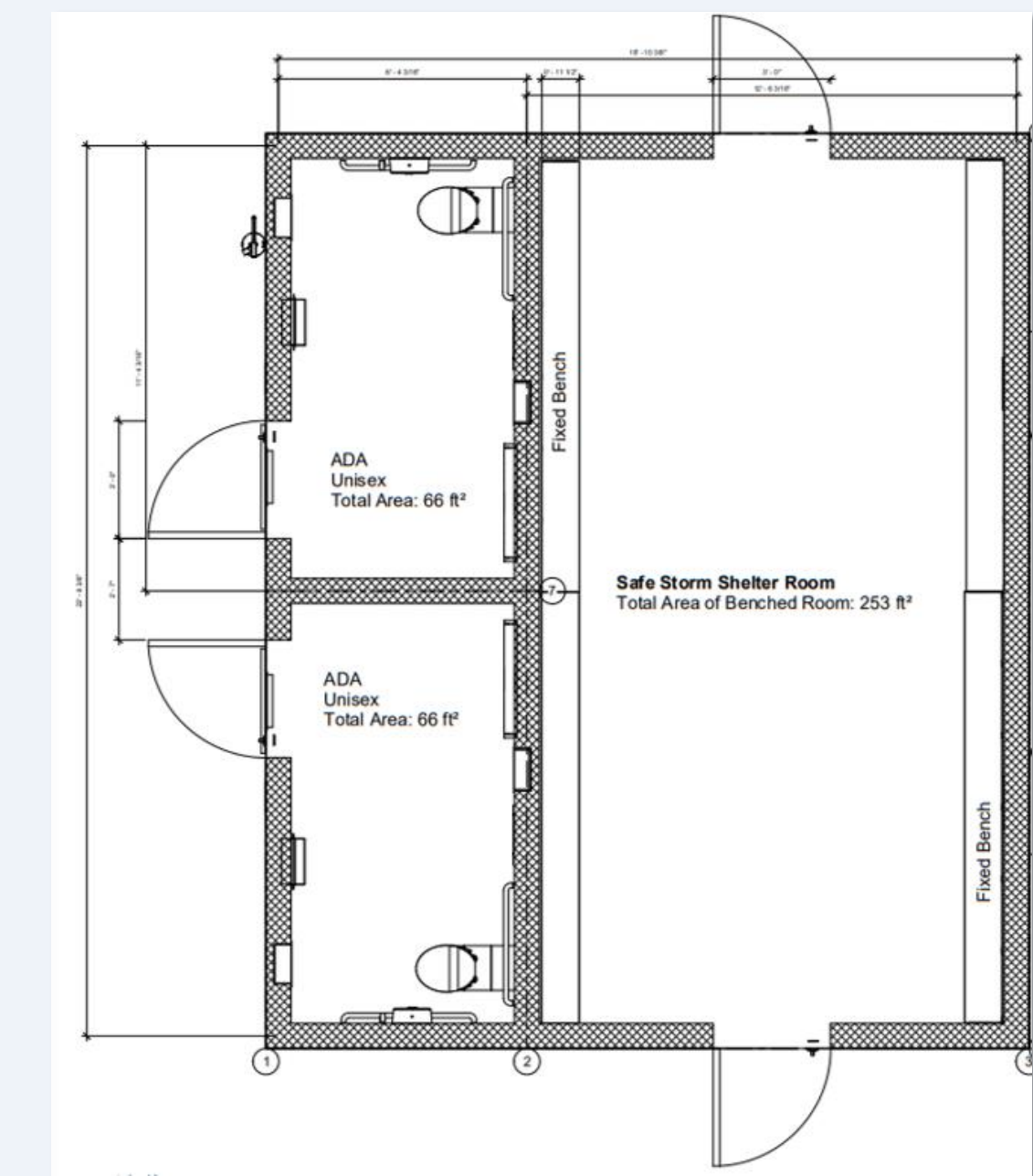


Figure 7. Floorplan

Campground Layout

The campground design includes a one-way gravel road that follows AASHTO design guidelines. 14 sites will be graded from the gravel road and were designed for back-in parking, an additional 3 sites were designed to be walk-in spots only. Each campsite will include basic amenities for primitive camping such as a fire ring, grill grate, and picnic tables.

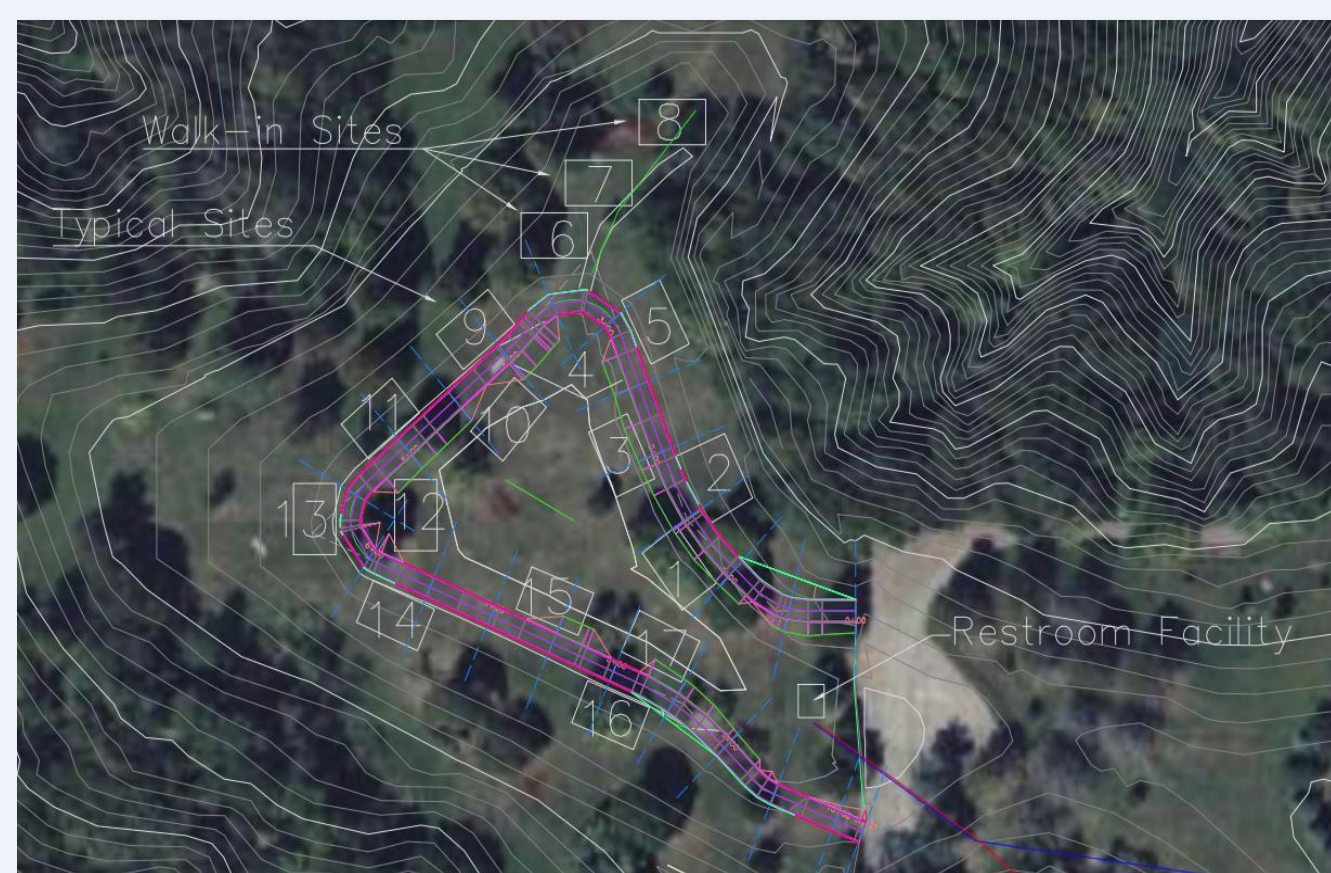


Figure 3. Road and Campground Layout



Figure 4. Campground Rendering

Front Gate Access

The front entrance gate into the park will need to be retrofitted to include an automatic gate with keypad access with our recommendation. Retrofitting this gate will allow campers access to the campground after hours and allow them to leave before the park before the gates opens at sunrise if needed.

Cost

The total cost that was calculated to complete this campground project is \$246,500. This cost includes the earthwork, roadway, restroom/storm shelter facility, campsite components, utility work, and gate access into the park. A breakdown of costs can be viewed below.

Table 1. Project Breakdown

Project Breakdown	Cost
Utilities	\$13,200
Site & Road Work	\$77,400
Restroom & Storm Shelter	\$93,600
Campsites	\$53,300
Gate Access	\$9,000
Total Cost	\$246,500

Table 2. Phase Breakdown

Phase Breakdown	Cost
Phase 1 – Dirt Work, Campsite Features & Automatic Gate	\$95,900
Phase 2 – Gravel & Utilities	\$57,000
Phase 3 – Restroom & Storm Shelter	\$93,600
Total Cost	\$246,500

Conclusion

With hard work and dedication, we strived to fulfill the needs of the community with a new addition to their hometown. To conclude the project, our research efforts and designs prioritized the safety and well-being of the campground's visitors and the environment around them. NAVA Engineering is grateful to have been a part of the design process for a funded project that will bring a new appreciation to nature and create wonderful camping memories for anyone to enjoy.