

An aerial photograph showing a community center complex in the center, surrounded by residential houses and large agricultural fields. The center includes a baseball field, a tennis court, a playground, and several buildings. The surrounding area consists of a mix of green lawns, trees, and brown, tilled farmland under a clear sky.

PRESTON NONMOTORIZED CONNECTIVITY

TEAM MEMBER INTRODUCTION



Hannah DeBruin
Transportation
Project Manager



Kalynn Burton
Urban & Regional Planning
Report Editor



Ernesto Flores
Transportation
Technical Support



IOWA
Preston



64

64

Client Contacts:
Teresa Weinschenk (City of Preston)
David Heiar (Jackson County Economic Alliance)

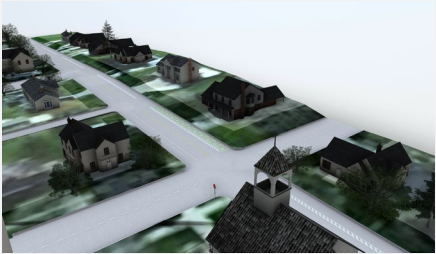
LOCATION

PROJECT SCOPE

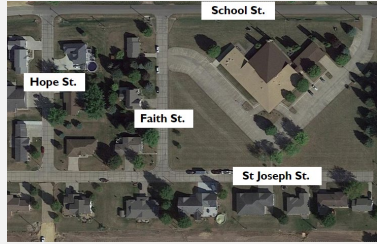


ORDER OF THE PRESENTATION

School Street



Southwest Development



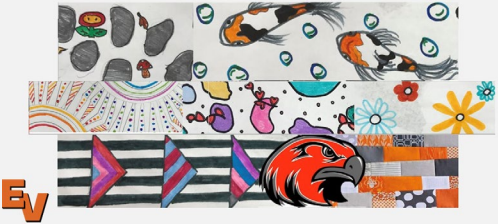
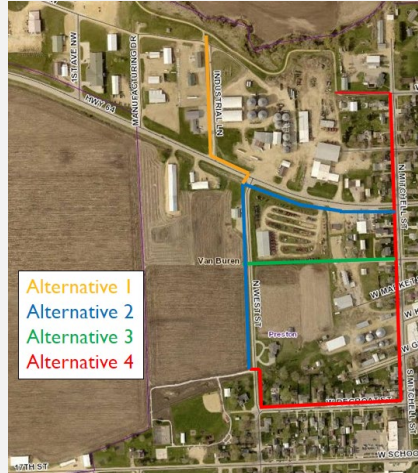
Highway 64 Crossings



Highway 64 Side Path



Copper Creek Trail Extension



ORDER OF THE PRESENTATION

School Street

Southwest
Development

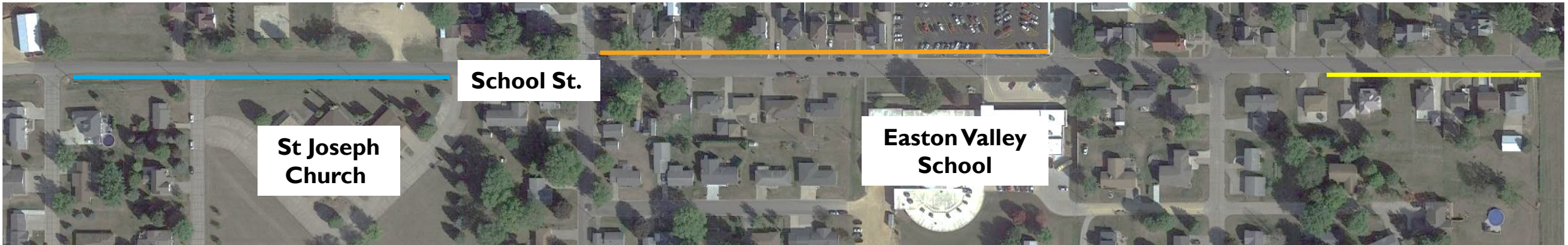
Highway 64
Crossings

Highway 64
Side Path

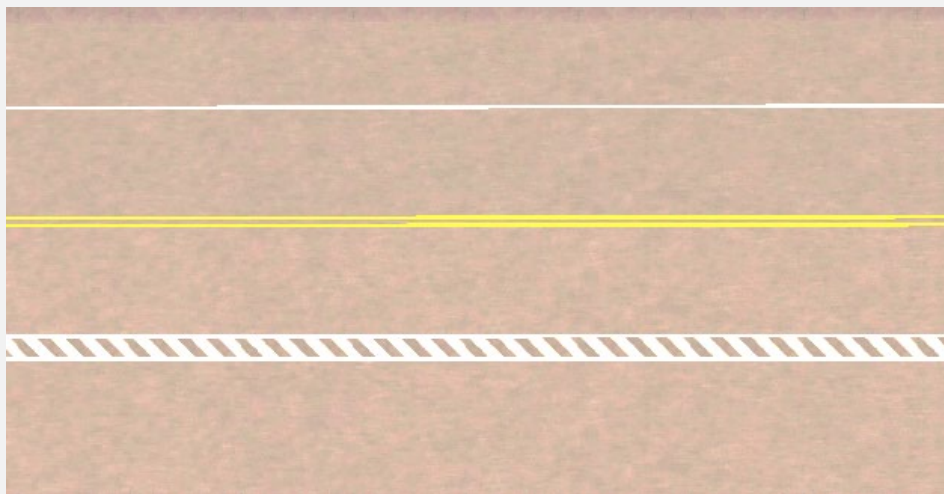
Copper Creek
Trail Extension



SCHOOL STREET

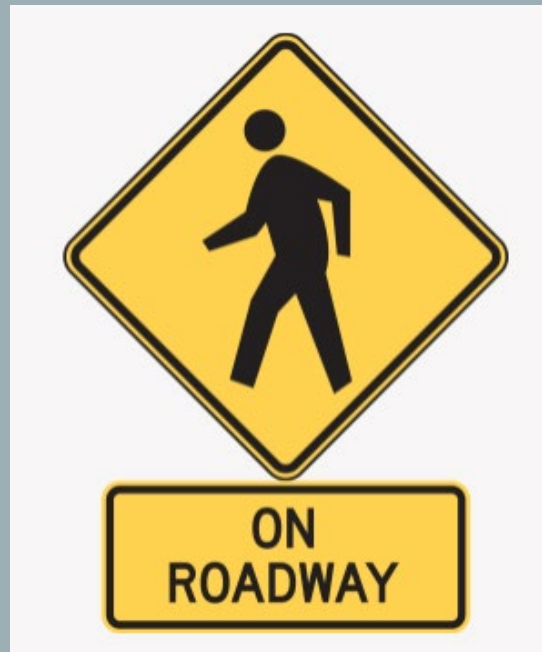


SCHOOL STREET – PEDESTRIAN LANE

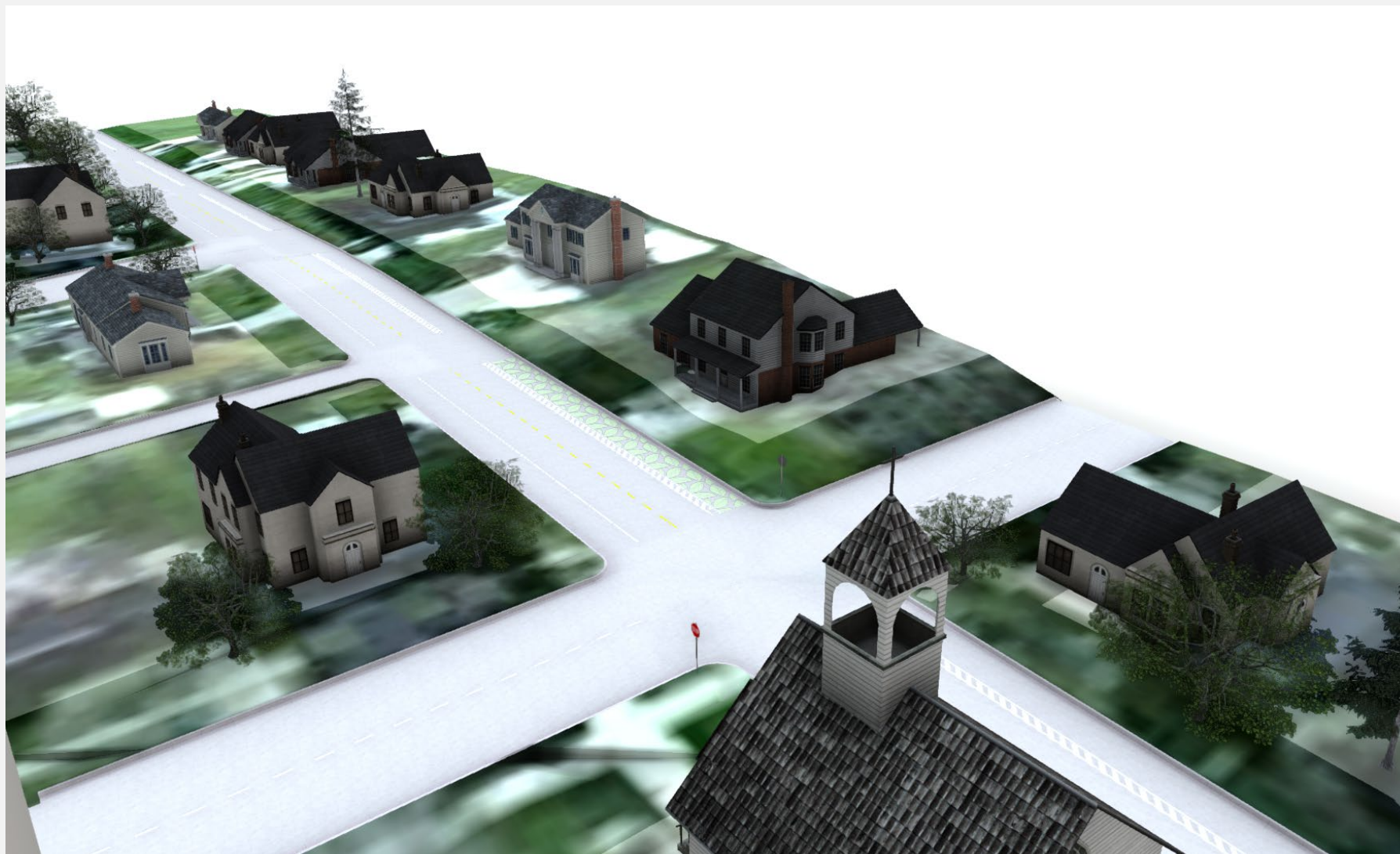


SCHOOL STREET – PEDESTRIAN LANE

Iowa DOT Crash Analysis Tool identified no previous safety concerns.



SCHOOL STREET – PEDESTRIAN LANE



SCHOOL STREET – PEDESTRIAN LANE



SCHOOL STREET – ALTERNATIVES 2&3

Width: 5 ft.
Depth: 4 in.
Material: Reinforced PCC Pavement

Alternative 2 – North Side



Alternative 3 – South Side



SCHOOL STREET

Pedestrian Lane

Construction Subtotal	13,800
10% Contingencies	1,375
20% Engineering and Administration	2,775
Total Project Cost	18,000

North Sidewalk

Construction Subtotal	98,500
10% Contingencies	9,850
20% Engineering and Administration	19,700
Total Project Cost	128,000

South Sidewalk

Construction Subtotal	106,500
10% Contingencies	10,625
20% Engineering and Administration	21,300
Total Project Cost	138,500

ORDER OF THE PRESENTATION

School Street

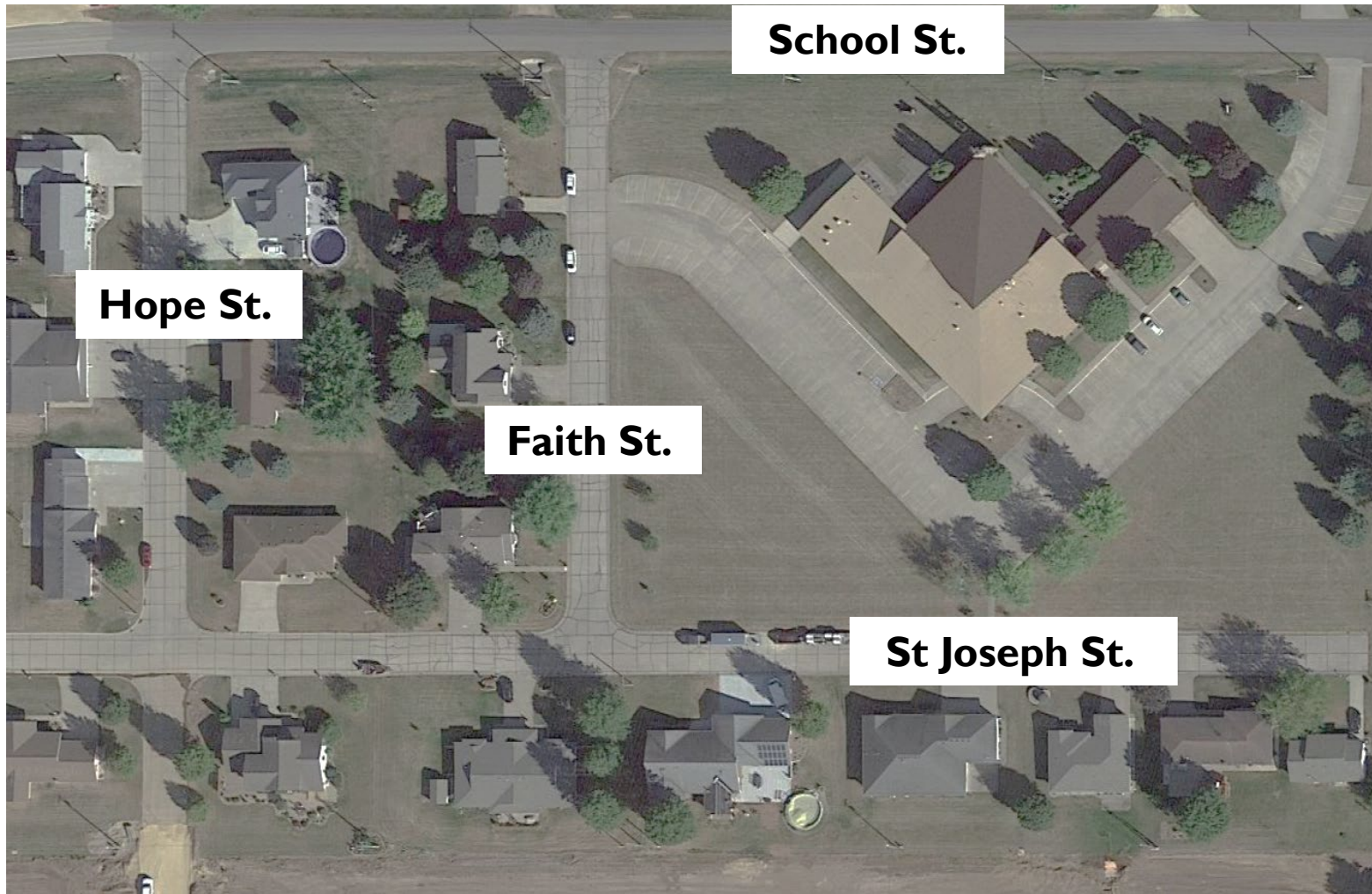
**Southwest
Development**

Highway 64
Crossings

Highway 64
Side Path

Copper Creek
Trail Extension





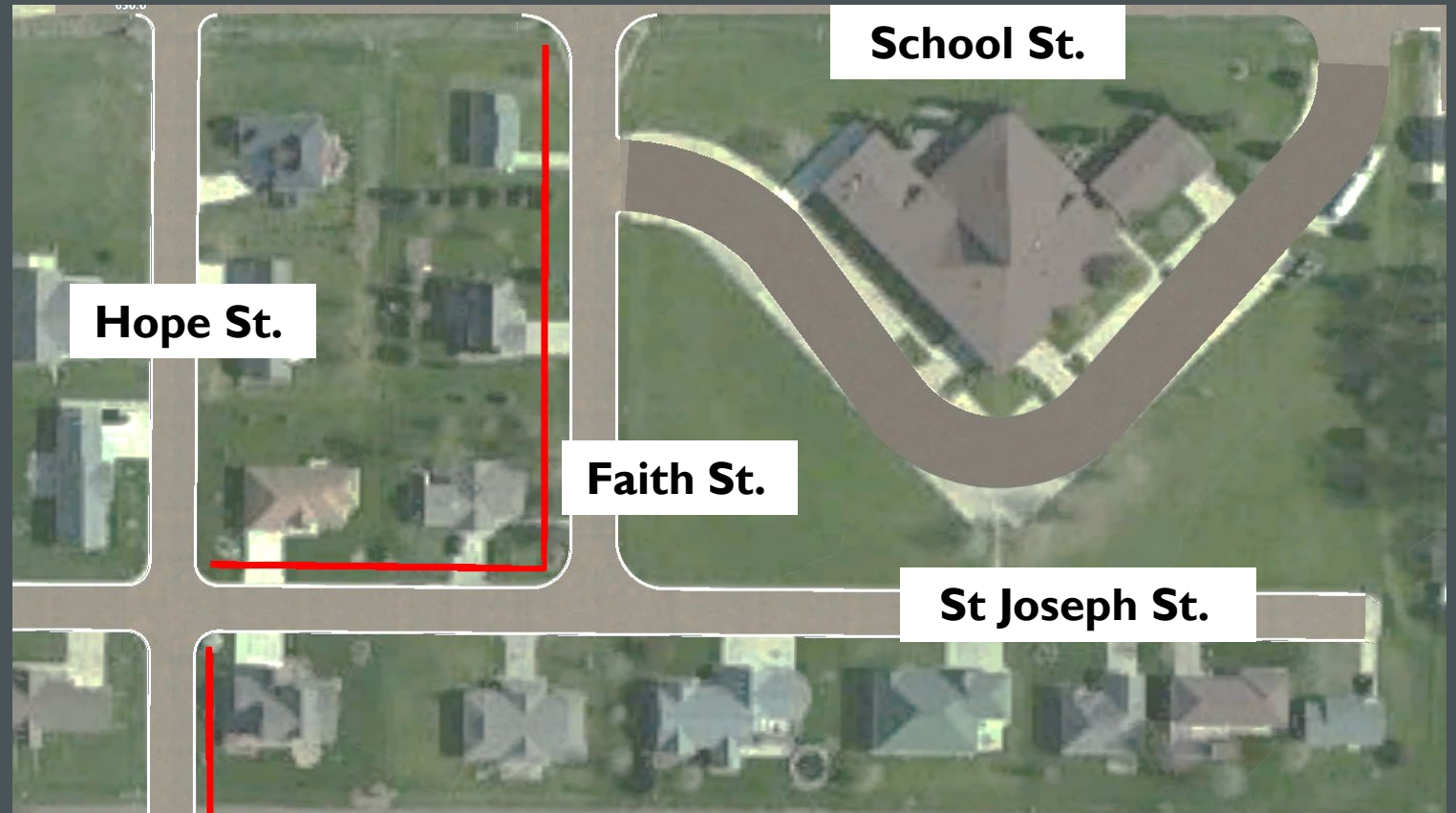
SOUTH-WEST DEVELOPMENT

SOUTH-WEST DEVELOPMENT

Width: 5 ft.

Depth: 4 in.

Material: Reinforced PCC Pavement



South-West Neighborhood Development

Construction Subtotal	50,000
10% Contingencies	4,975
20% Engineering and Administration	9,950
Total Project Cost	64,500

ORDER OF THE PRESENTATION

School Street

Southwest
Development

Highway 64
Crossings

Highway 64
Side Path

Copper Creek
Trail Extension



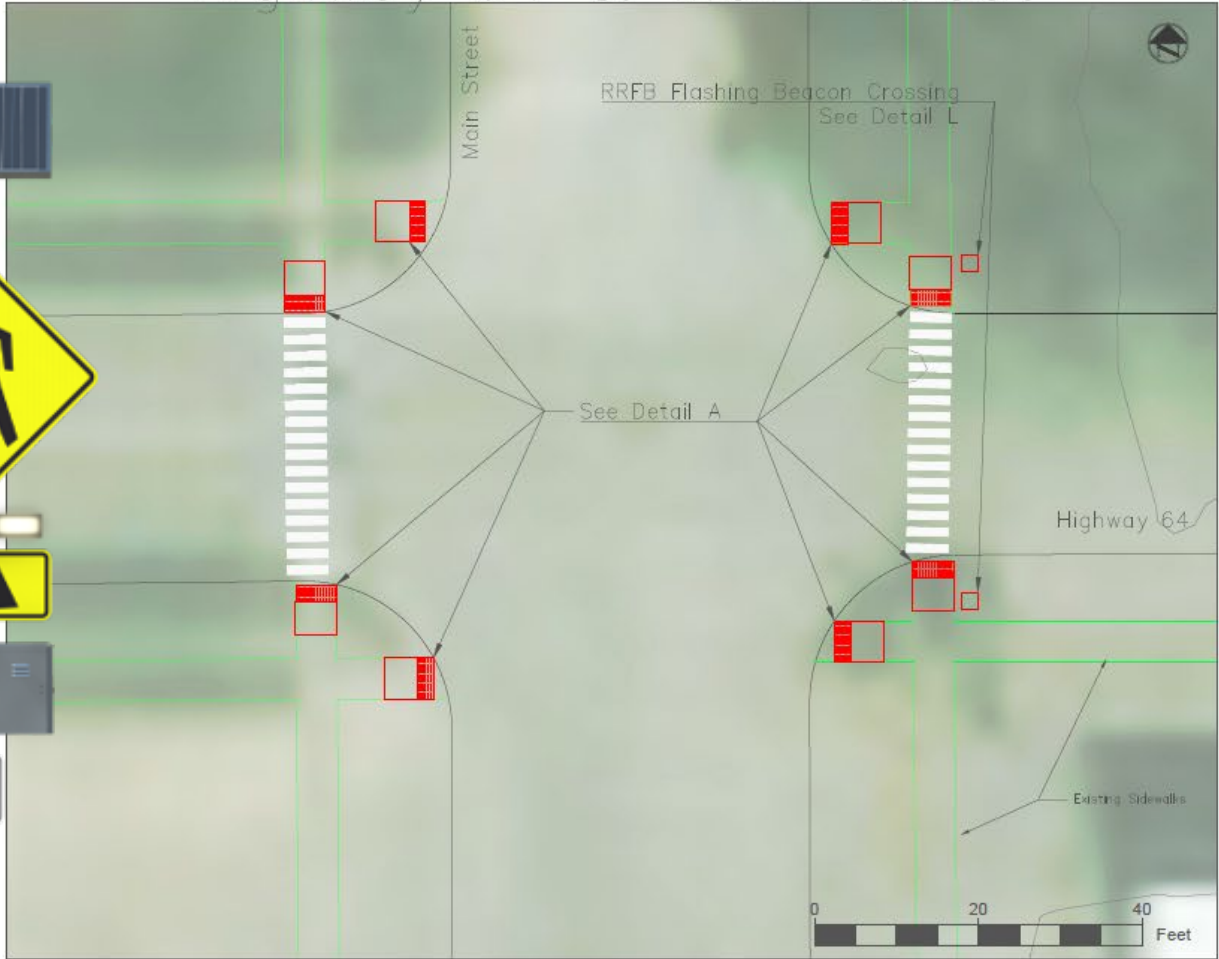
HIGHWAY 64 CROSSINGS



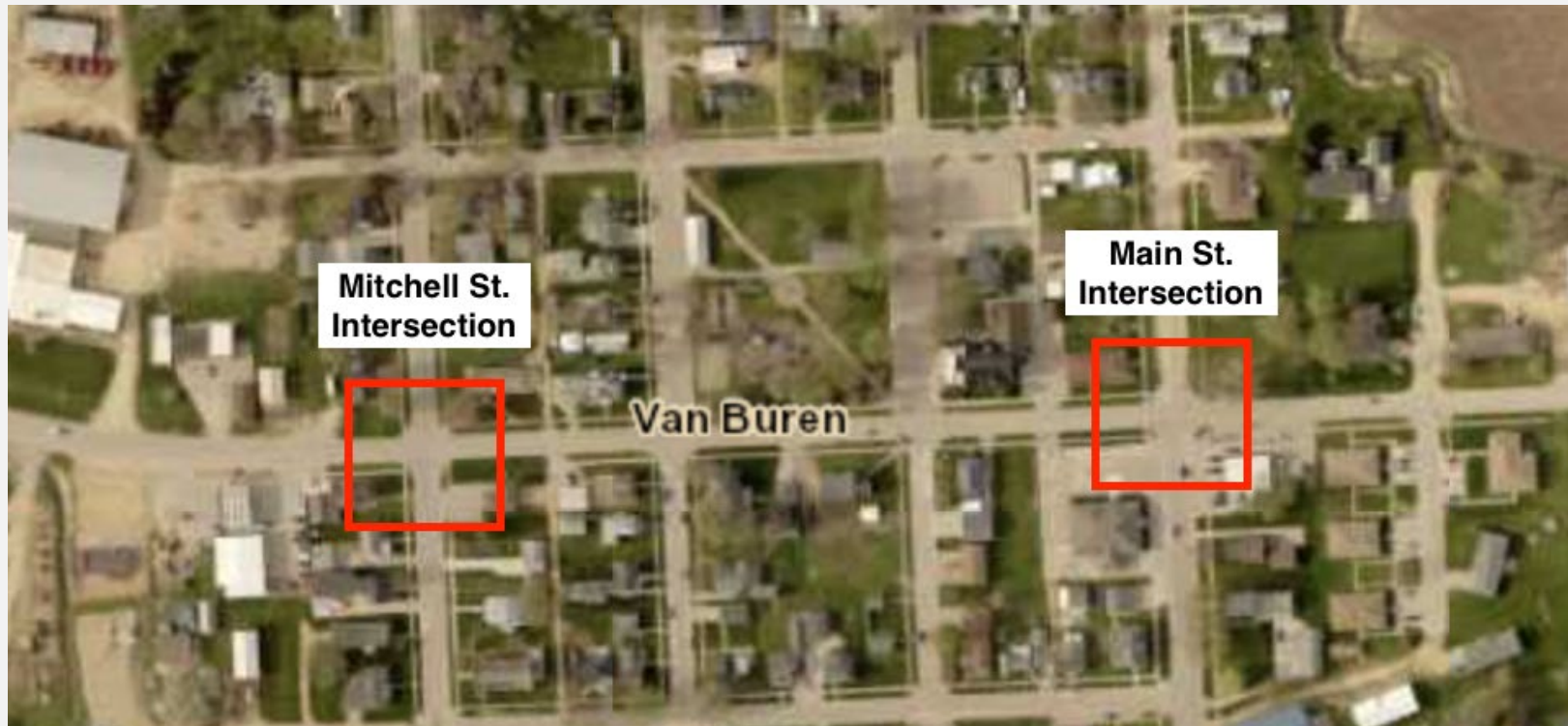
HIGHWAY 64 CROSSINGS

Highway 64 & Mitchell Street

Highway 64 & Main Street



HIGHWAY 64 CROSSINGS



Highway 64 Crossings

Construction Subtotal	22,100
10% Contingencies	2,200
20% Engineering and Administration	4,425
Total Project Cost	28,800

ORDER OF THE PRESENTATION

School Street

Southwest
Development

Highway 64
Crossings

Highway 64
Side Path

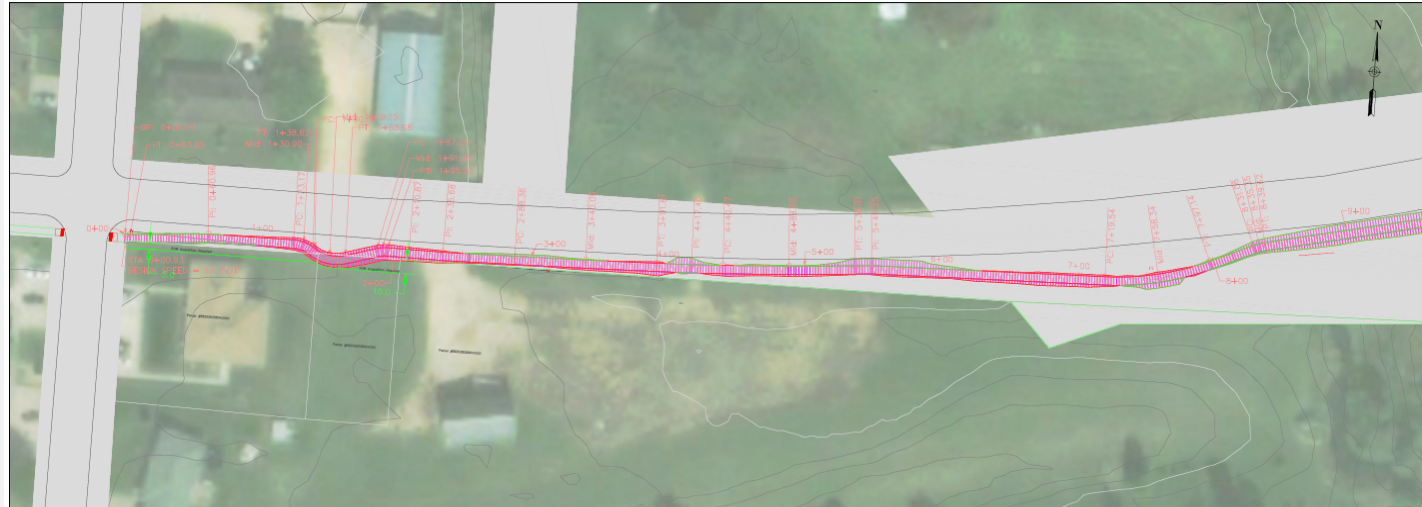
Copper Creek
Trail Extension



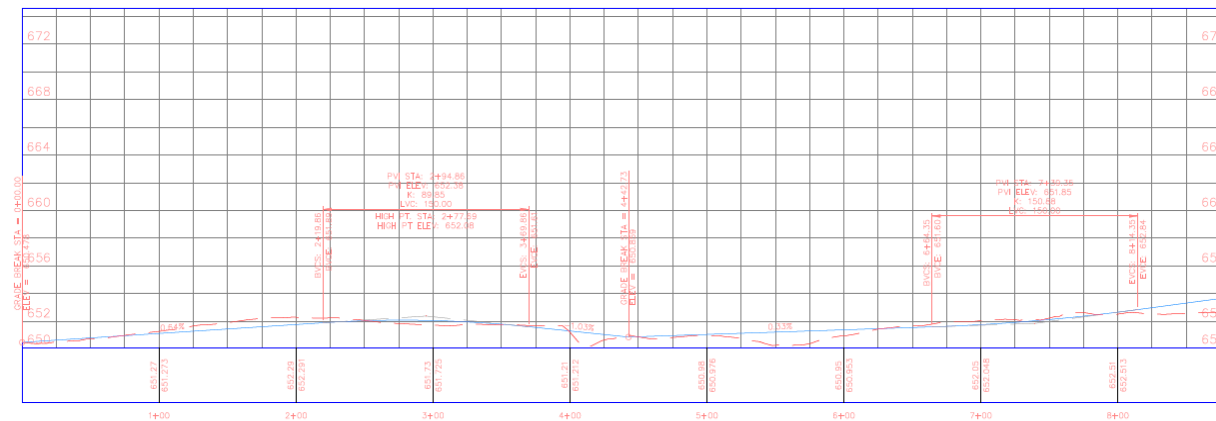
HIGHWAY 64 SIDE PATH



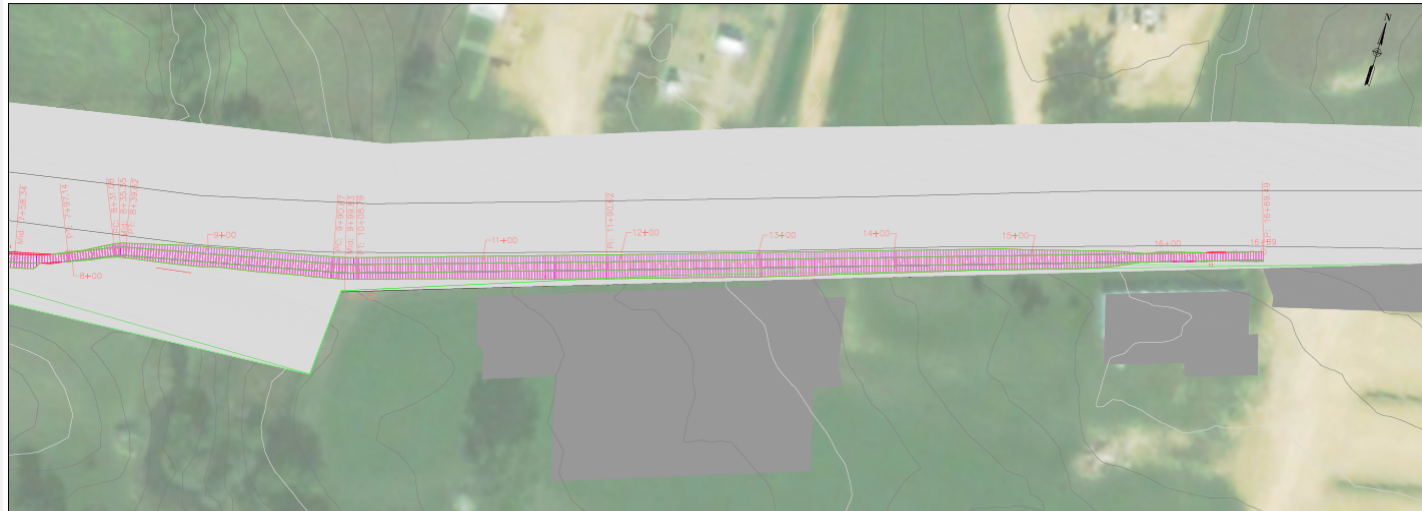
HIGHWAY 64 SIDE PATH



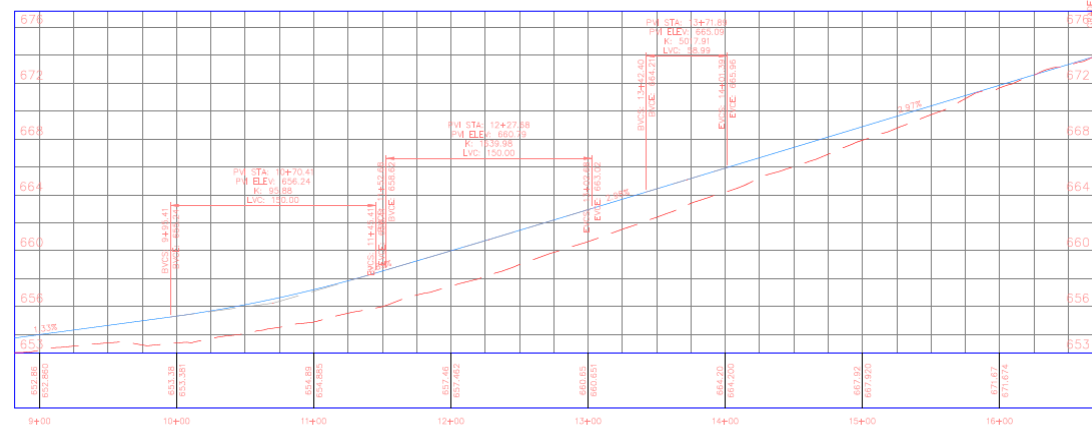
Highway64SidePath PROFILE



HIGHWAY 64 SIDE PATH



Highway64SidePath PROFILE



HIGHWAY 64 SIDE PATH



Highway 64 Side Path

Width: 6 ft.
 Depth: 5 in.
 Material: Reinforced
 PCC Pavement

Easements and Property Acquisition	978
Construction Subtotal	97,500
10% Contingencies	9,725
20% Engineering and Administration	19,400
Total Project Cost	126,500

ORDER OF THE PRESENTATION

School Street

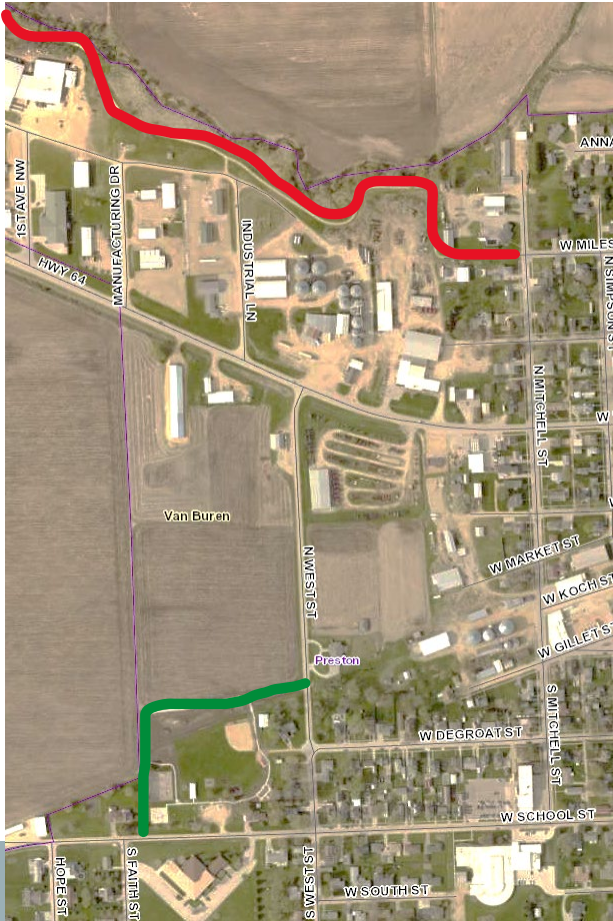
Southwest
Development

Highway 64
Crossings

Highway 64
Side Path

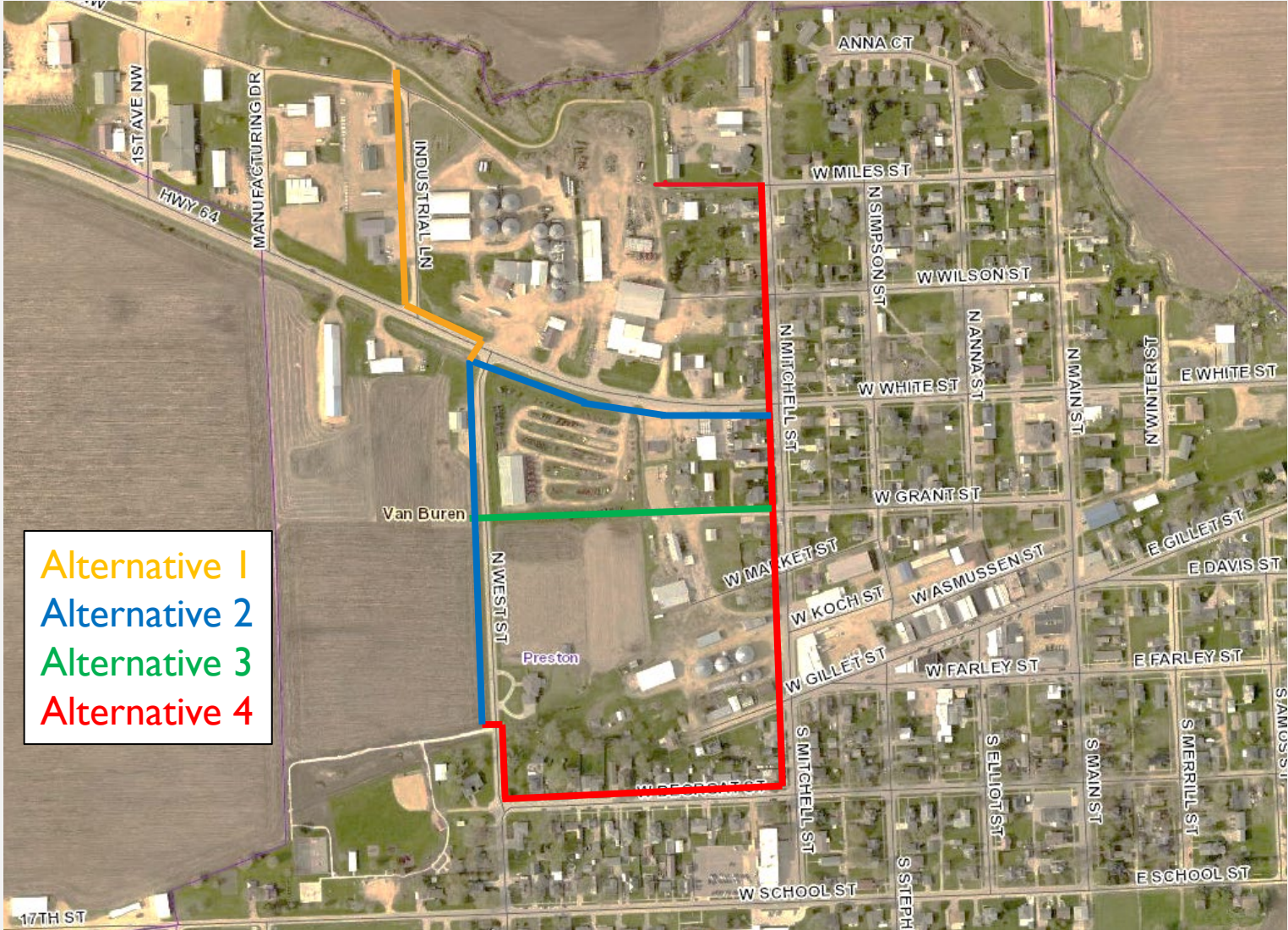
Copper Creek
Trail Extension





COPPER CREEK TRAIL

COPPER CREEK TRAIL – FOUR ALTERNATIVES



Width: 6 ft.
Depth: 5 in.
Material: Reinforced
PCC Pavement

COPPER CREEK TRAIL – FOUR ALTERNATIVES

Trail Alternative 1



*Speed limit sign placement using Iowa DOT Traffic Manual Section 2-08 Guidance

Trail Alternative 2



Trail Alternative 3



Trail Alternative 4



COPPER CREEK TRAIL – FOUR ALTERNATIVES

Copper Creek Trail Connection

Alternative 1

Construction Subtotal	95,000
10% Contingencies	19,025
20% Engineering and Administration	19,000
Total Project Cost	123,500

Alternative 2

Construction Subtotal	71,500
10% Contingencies	71,725
20% Engineering and Administration	14,300
Total Project Cost	93,000

Alternative 3

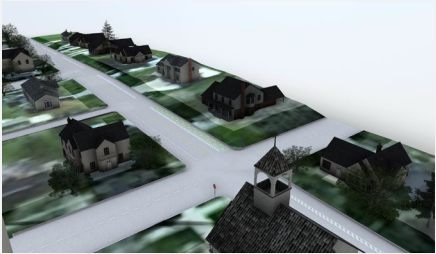
Construction Subtotal	89,500
10% Contingencies	8,950
20% Engineering and Administration	17,900
Total Project Cost	116,500

Alternative 4

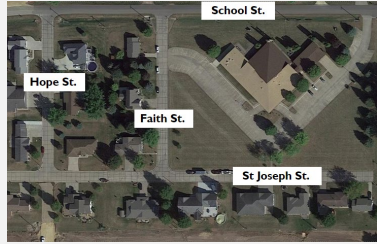
Construction Subtotal	13,600
10% Contingencies	1,375
20% Engineering and Administration	2,725
Total Project Cost	17,800

ORDER OF THE PRESENTATION

School Street



Southwest Development



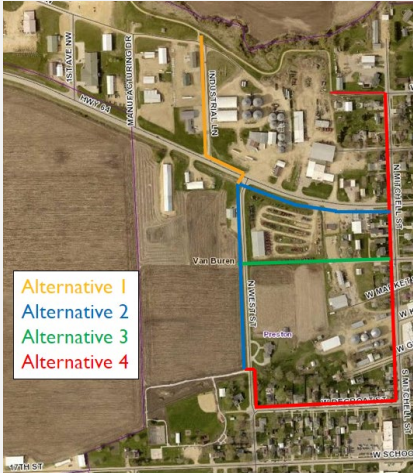
Highway 64 Crossings



Highway 64 Side Path

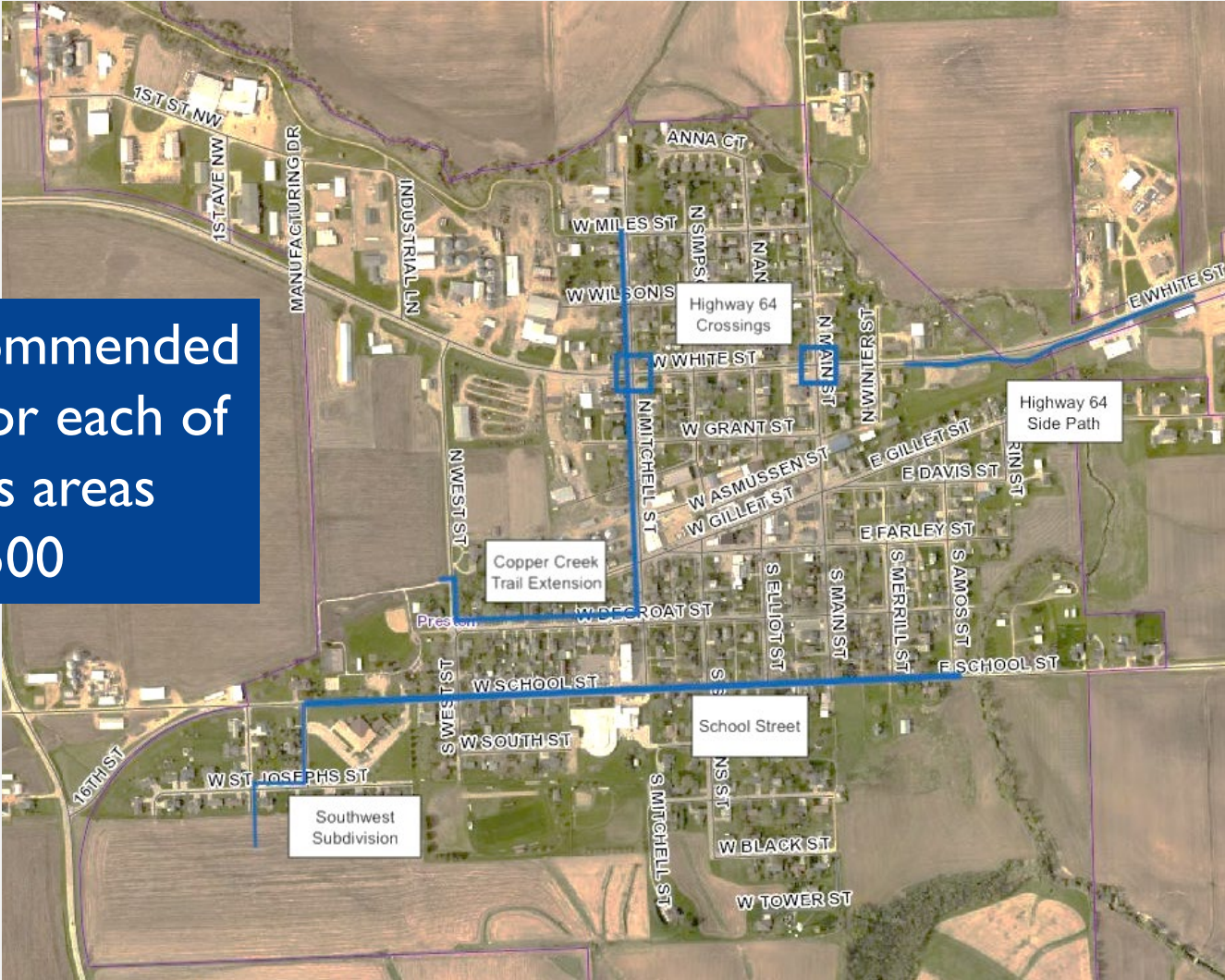


Copper Creek Trail Extension



TOTAL RECOMMENDED DESIGN COSTS

Including recommended alternatives for each of the 5 focus areas
\$255,500



FUNDING RESOURCES

Project Description	Potential Funding Source	Notes
Highway 64 Crossings	TAP, RCTP	Qualifies as a safe routes to school project
School Street Additional Sidewalks/Introduce pedestrian lane	TAP	Qualifies as a safe routes to school project
(Optional) School Street Pedestrian Lane Mural	Creative Places Project Grant, Strengthening Communities Grant	
Copper Creek Trail extension south to park off Degroat Street	TAP, State Rec Trail Program	Qualifies under 'Recreational Trails Program under Section 206 of Title 23'
New sidewalks along Hope Street	NA	
Highway 64 Side Path out to Dollar General	TAP, RCTP, State Rec Trail Program	

An aerial photograph showing a residential development in the foreground, featuring several large, modern houses with dark roofs and light-colored siding. A paved road network is visible, including a prominent intersection. Beyond the houses, a large, flat, brownish field stretches towards the horizon, likely a construction site or agricultural land. The sky is overcast and grey.

QUESTIONS?