

Monticello, IA Wetland Restoration and Trail Design



IOWA | Civil and Environmental
Engineering



Our Team



Chuck Smith
Project Manager



Lara Gavin



Grant Hemphill

Site Overview



Riverside
Wetland Site

Maquoketa River

N Main Street

Kitty Creek

12-Acre
Site

Storm Sewer
Outlets

Project Scope



**Stormwater
Management**



**Community Trail
Connectivity**



**Ecosystem and
Treatment**



**Maintenance
Guidelines**

Riverside Wetland Site

Riverside
Wetland Site

Maquoketa River

N Main Street

Kitty Creek



Riverside Swale

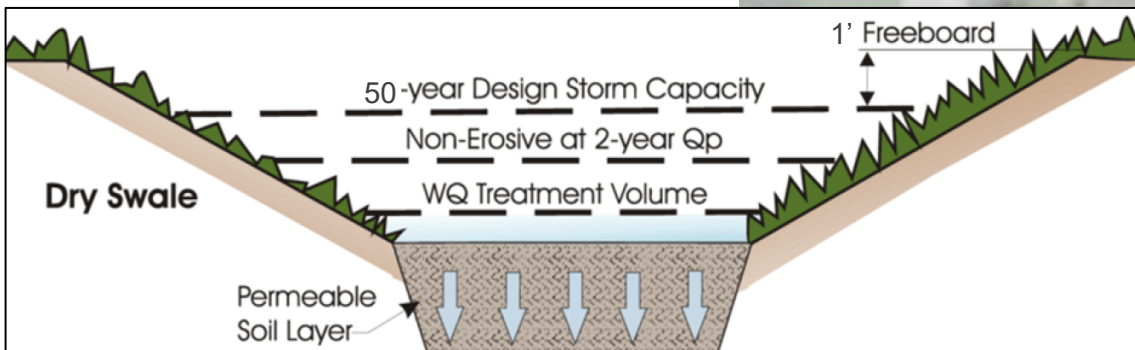
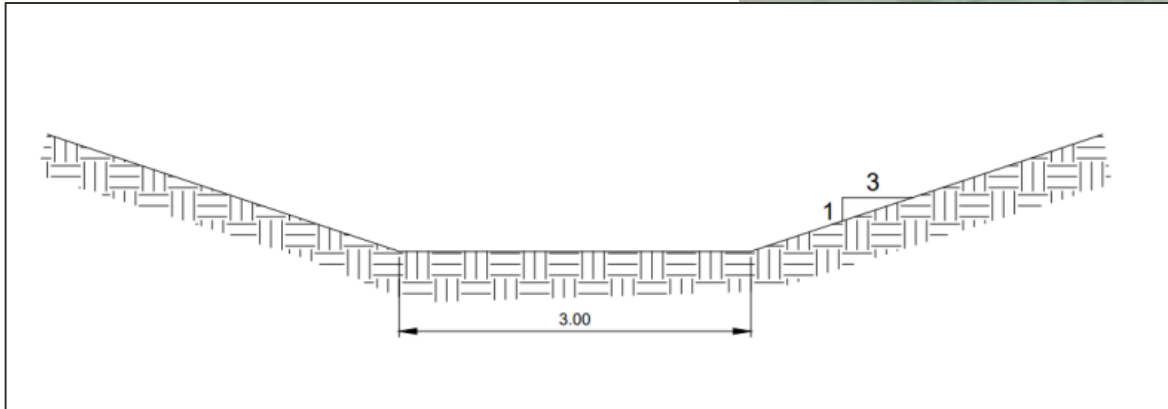
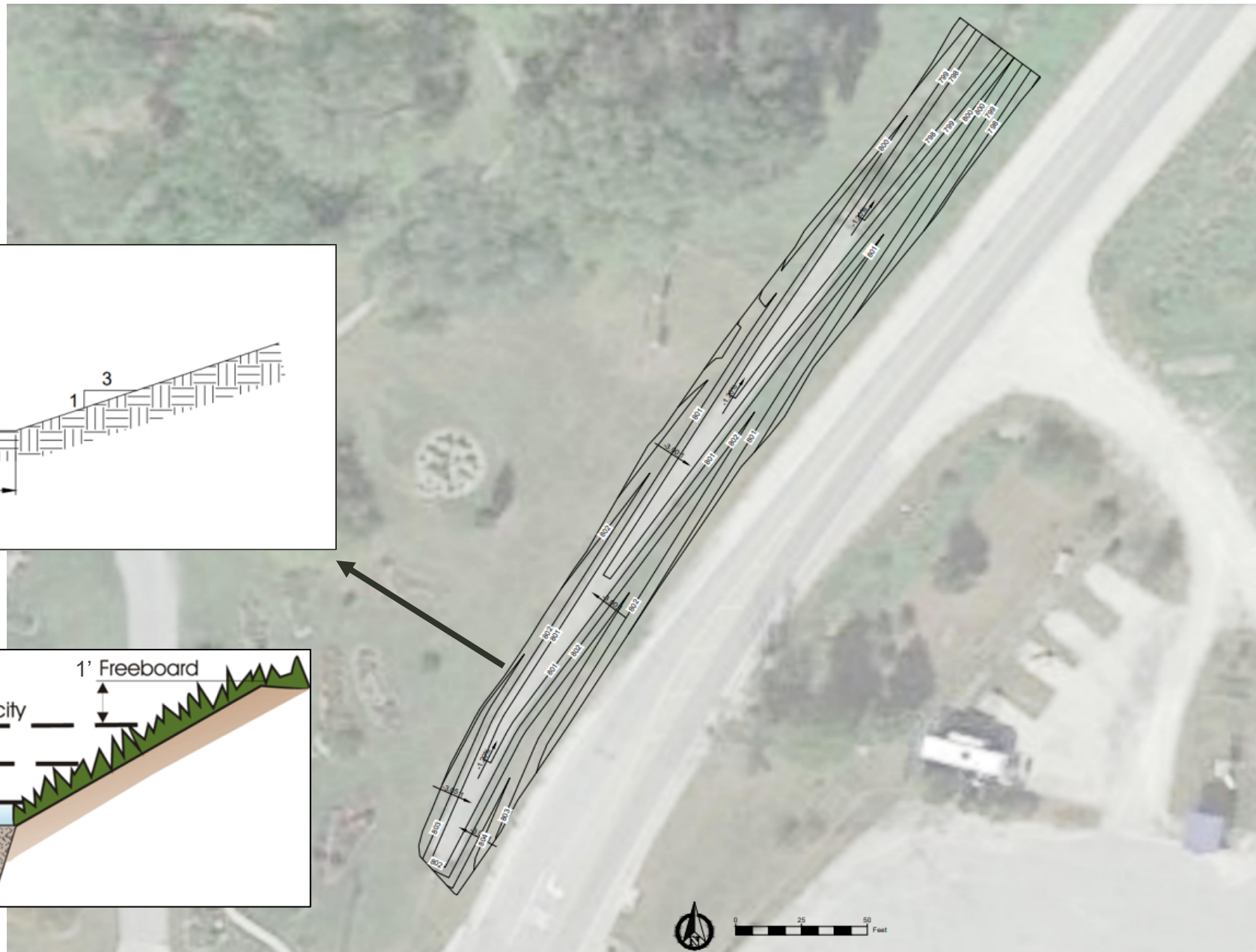


Riverside Swale



Swale Outlet

Riverside Swale



12-Acre Site

Maquoketa River

N Main Street

Kitty Creek

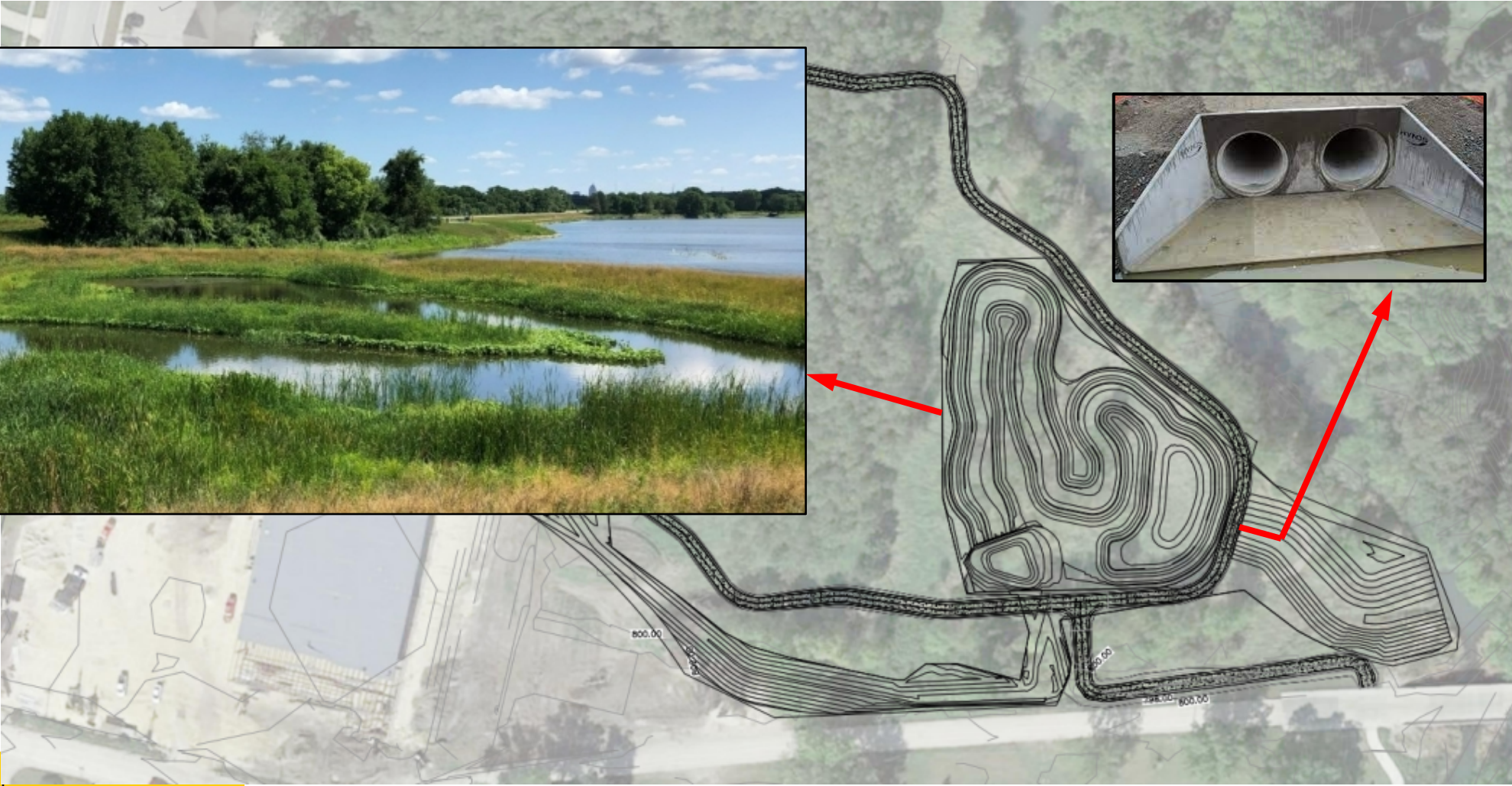
12-Acre Site



12-Acre Proposed Drainage Network



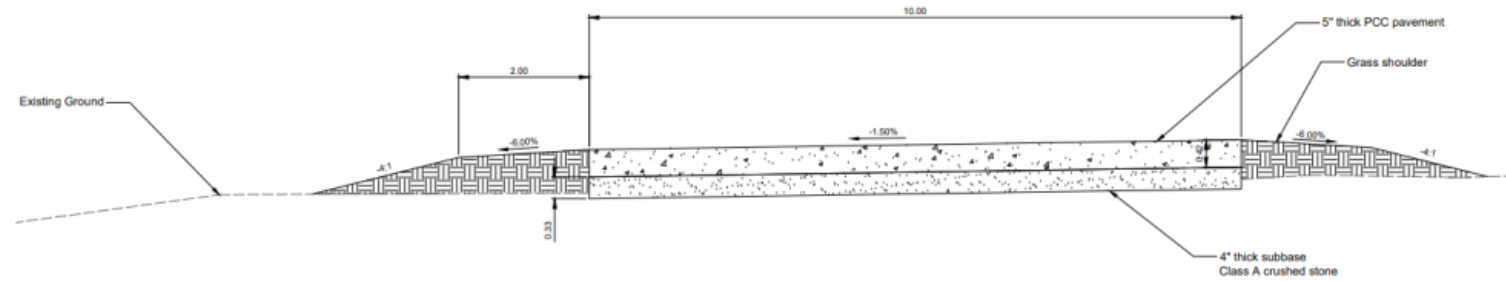
12-Acre Proposed Drainage Network



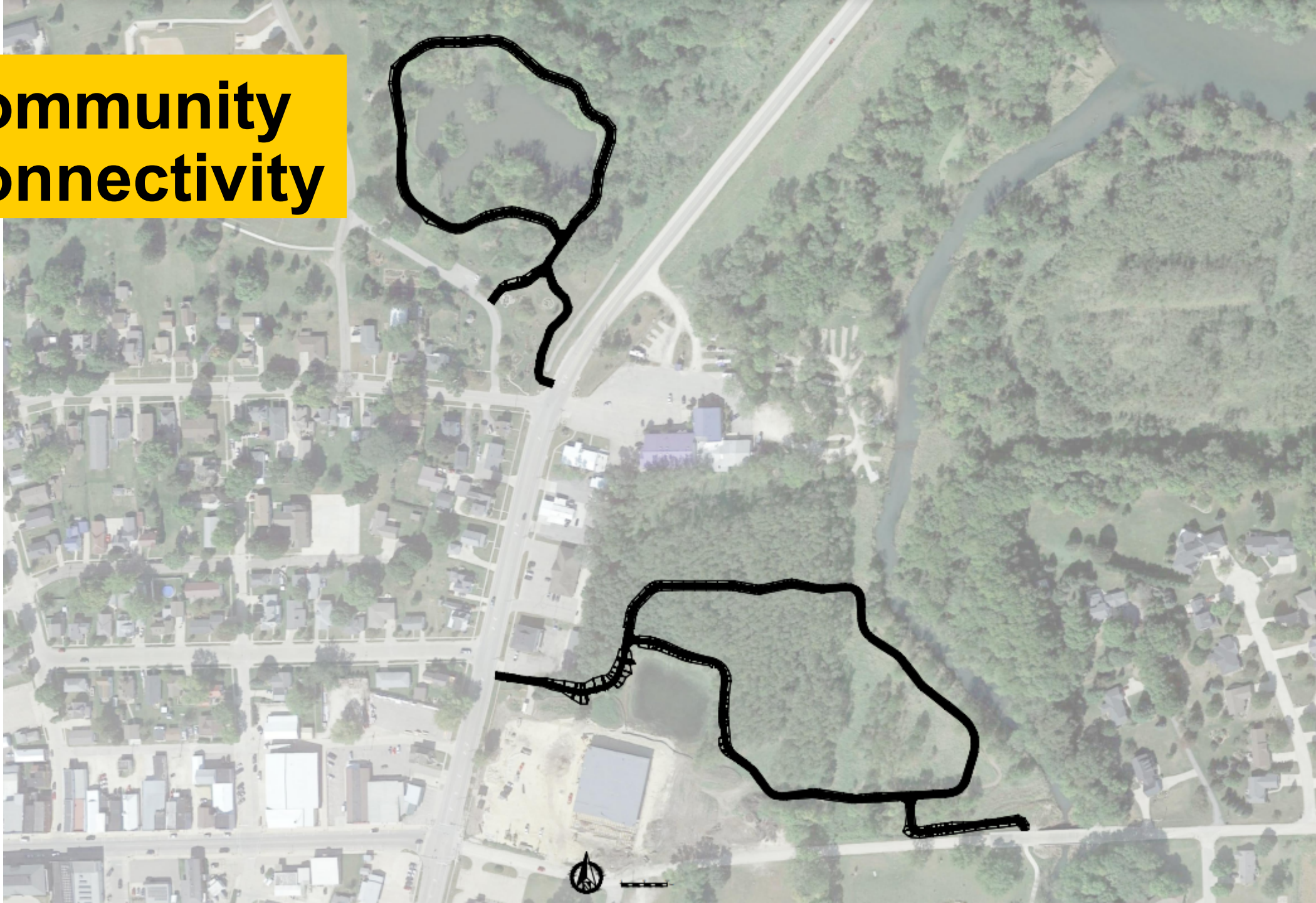
Trail design followed

Iowa DOT 12B-1

for share use paths.



Community Connectivity



Ecosystem Solutions



IOWA DEPARTMENT OF
NATURAL RESOURCES



IOWA

Civil and Environmental
Engineering

Maintenance Guidelines




Riverside Cost Estimate

Item Description	Quantity	Unit	Unit Price	Total
RECREATIONAL TRAIL, PORTLAND CEMENT CONCRETE, 5 IN	2292.0	SY	\$ 36.57	\$83,818.44
GRANULAR SURFACING ON ROAD, CLASS A CRUSHED STONE	20621.0	SF	\$ 0.43	\$8,908.27
CULVERT, CONCRETE ROADWAY PIPE, 24 IN. DIA.	22.0	LF	\$ 96.42	\$2,121.24
REMOVAL OF RECREATIONAL TRAIL	1166.7	SY	\$ 12.23	\$14,268.33
IA CP2, CP23, CP25 WET CRP MIX (30:10)	2.5	AC	\$ 110.00	\$275.00
REMOVAL OF EXISTING P.C OVERLAY	311.1	SY	\$ 20.07	\$6,244.00
TOPSOIL, SPREAD	725.0	CY	\$ 11.21	\$8,127.25
COMPACTING BACKFILL	944.9	CY	\$ 15.61	\$14,749.11
EXCAVATION, CLASS 13, WASTE	855.1	CY	\$ 24.65	\$21,077.39
Construction Sub-Total				\$159,589.03
Design Services Subtotal				\$8,580.00
Contingencies (10%)				\$16,816.90
Total Cost				\$184,985.93

12-Acre Cost Estimate

Item Description	Quantity	Unit	Unit Price	Total
RECREATIONAL TRAIL, PORTLAND CEMENT CONCRETE, 5 IN	3122.0	SY	\$ 36.57	\$114,171.54
GRANULAR SURFACING ON ROAD, CLASS A CRUSHED STONE	28097.0	SF	\$ 0.43	\$12,137.90
EXCAVATION, CLASS 10, ROADWAY AND BORROW	8258.0	CY	\$ 4.60	\$37,986.80
CULVERT, CONCRETE ROADWAY PIPE, 42 IN. DIA.	128.0	LF	\$ 161.83	\$20,714.24
IA CP2, CP23, CP25 WET CRP MIX (30:10)	4.0	AC	\$ 110.00	\$440.00
EXCAVATION, CLASS 13, WASTE	500.0	CY	\$ 24.65	\$12,325.00
TOPSOIL, SPREAD	1600.0	CY	\$ 11.21	\$17,936.00
Construction Sub-Total				\$215,711.48
Design Services Subtotal				\$20,020.00
Contingencies (10%)				\$23,573.15
Total Cost				\$259,304.63

Therefore, total cost of project is approximately **\$444,300.**

An aerial photograph of a residential area. A yellow rectangular box is overlaid on the right side of the image, containing the text "Overview and Questions". Two hand-drawn white outlines are present: one in the upper left quadrant and one in the lower center. A blue line is drawn across the image, starting from the top left, crossing a road, and ending near the bottom center. The background shows houses, trees, a baseball field, and a large pond.

Overview and Questions